

SB, Empty and programmed VFDs Steel shot blasters, 2024-08

SYMPTOM/DESCRIPTION

To overcome the long lead time and programming knowledge constraints, part numbers for the Steel shot blasters VFD (Variable Frequency Drive) are created.

Now there will be programmed (Make To Order) and unprogrammed (always available in the warehouse).

AFFECTED UNITS

All Steel shot-blasters.

CORRECTIVE ACTION

To further support the Aftermarket and the product support for Shot blasting products, two different options to order the VFDs as a spare part are created.

Option 1 - Unprogrammed VFD

Basic information:

Always kept in stock in the warehouse. Shorter lead time due to these VFDs being carry-over parts for many products.

The part number for an unprogrammed VFD will be (mostly) distinguished by the last digit, ending with 01, e.g. 546961901.

Note: for Steelblasting VFD's there are exceptions to this logic.

Unprogrammed VFD (for Lenze inverters) requires an additional programming device, PN 546992701, Software system USB Module for Lenze inverter (i510 & i550).

Requires installing Lenze software on your computer – Easy Navigator EasyStarter V1.24.
(Free download)

Unprogrammed VFD (for Schneider inverters) requires an additional programming device PN 546960301, Software system USB Module for Schneider inverters ATV.

No installation software is required, the USB module contains an SD card.

The VFD program/software can be received from the techsupport.cp@husqvarna.se team by providing the following information:

Product model name:

Serial number:

In case the product consists of two VFDs, please mention which VFD requires programming. Possibly provide a picture.

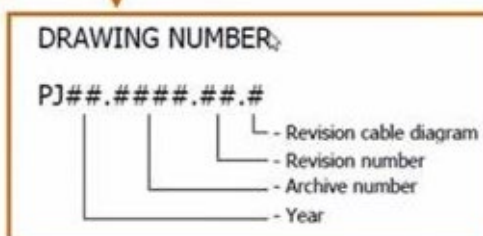
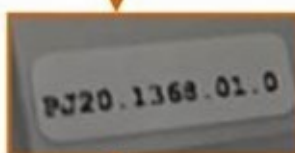
PJ number: (PJ number is located on a small sticker inside the electrical cabinet).

TEST STICKER INSIDE ELECTROBOX



The test sticker inside the box displays information;

- Serial number of the E-box
- The initials of the test engineer
- De test date
- Drawing number (PJ-number)



Option 2 - Programmed VFDs

Won't be kept in stock due to the big varieties of the software for the VFDs.

Will be programmed upon order which leads to a **longer lead time**.

The correct Part numbers for the programmed VFDs are mentioned in the tables in *Appendix A*.

PROCEDURE

Refer to Appendix A and follow the link for [How to upload software program Lenze VFD.mp4](#)

Refer to Appendix A and follow the link for [Uploading software to Schneider Altivar 12 VFD.mp4](#)

WARRANTY INFORMATION

Normal warranty policy applies.

For option 1, the recommended software device is needed:

Lenze **i510 & i550** software uploading device.

The Lenze VFD (8200) is an old model that does not have a software upload device.
Programming is only possible by entering parameters manually (request the correct parameter list from technical support).

Hva ID: **546992701**
Lenze ID: **13516238**
USB Module (*application loader*)
(SOFTWARE SYSTEM USB Module for
Lenze inverter (i510 & i550))



USB type: 2.0 connection cable, (A-plug to micro-B plug)

The recommended software device is needed:

Schneider ATV software uploading device.

Hva ID: **546960301**
Schneider ID: **VW3A8121**
(SOFTWARE SYSTEM Multi loader
Power on & Power off Multi loader)



Revision History

Rev.	Date	Order id.	Description
A	2024-08	00074584	Created

Appendix A

EBE 350E



Market	PJ Number	EMPTY VFD	PROGRAMMED VFD	VFD Side	VFD Brand
(EU) 400V 50/60Hz	PJ23.1464.00.0	534432101	534432104	LH	Lenze i510
(EU) 400V 50/60Hz	PJ23.1464.00.0	534432101	534432105	RH	Lenze i510
(US) 480V 60Hz	PJ11.1078.09	533486701	533754901	LH	Lenze 8200
(US) 480V 60Hz	PJ11.1078.09	533486701	533755201	RH	Lenze 8200
(US) 480V 60Hz	PJ23.1462.00.1	534432101	534432104	LH	Lenze i510
(US) 480V 60Hz	PJ23.1462.00.1	534432101	534432105	RH	Lenze i510

EBE 350EX



Market	PJ Number	EMPTY VFD	PROGRAMMED VFD	VFD side	VFD Brand
(US) 380-460V 50/60Hz	PJ18.1295.00	533486701	533754901	LH	Lenze 8200
(US) 380-460V 50/60Hz	PJ18.1295.00	533486701	533755201	RH	Lenze 8200
(US) 380-460V 50/60Hz	PJ19.1323.06	534432101	534432104	LH	Lenze i510
(US) 380-460V 50/60Hz	PJ19.1323.06	534432101	534432105	RH	Lenze i510

EBE 500S



Blaster VFD

Market	PJ Number	EMPTY VFD	PROGRAMME D VFD	VFD side	VFD Brand
440V 50Hz	PJ13.1130.05	*547689301 Replaced by 547017568	*547689302 Replaced by 547689501	Single VFD	Schneider Altivar 71 Replaced by ATV 340
400-440V 60Hz	PJ18.1269.05.0	547017568	547689501	Single VFD	Schneider Altivar 340

* Obsolete after stock depleted.

Retrofit needed for the Blaster VFD, contact techsupport.cp@husqvarna.se for further information.

EBE 500E



Market	PJ Number	EMPTY VFD	PROGRAMMED VFD	VFD Side	VFD Brand
35HP	PJ10.1058.18	533486701	533754901	LH	Lenze 8200
35HP	PJ10.1058.18	533486701	533755201	RH	Lenze 8200
35HP 60Hz	PJ23.1497.00	534432101	534432106	LH	Lenze i510
35HP 60Hz	PJ23.1497.00	534432101	534432107	RH	Lenze i510
400V 50Hz	PJ11.1091.09	533486701	533754901	LH	Lenze 8200
400V 50Hz	PJ11.1091.09	533486701	533755201	RH	Lenze 8200
400V 50Hz	PJ11.1091.09	*547689401 Replaced by 547017568	*547689402 Replaced by 547689502	Blaster	Schneider ATV 71 Replaced by ATV 340
400V 50Hz	PJ23.1467.01	534432101	534432108	LH	Lenze i510
400V 50Hz	PJ23.1467.01	534432101	534432109	RH	Lenze i510
400V 50Hz	PJ23.1467.01	547017568	547689502	Blaster	Schneider ATV 340

* Obsolete after stock depleted.

Retro fit needed for the Blaster VFD, contact techsupport.cp@husqvarna.se for further information.

2-48DS



Market	PJ Number	EMPTY VFD	PROGRAMMED VFD	VFD Brand
400V 50Hz	PJ11.1082.11	*534389801 Replaced by 536544201	*534389802 Replaced by 536544202	Lenze 8200 Replaced by i510
400V 50-60Hz	PJ23.1470.01	536544201	536544202	Lenze i510

*** Obsolete after stock depleted.**

(Retrofit needed for the Blaster VFD, contact techsupport.cp@husqvarna.se for further information).

900 VMB



Market	PJ Number	EMPTY VFD	PROGRAMMED VFD	VFD Side	VFD Brand
400V - 480V 60Hz	PJ18.1271.00	533566901	533566902	LH & RH	Lenze 8200
400V - 480V 60Hz	PJ23.1474.01	547017842	547689601	LH & RH	Lenze i550