

SB, Soft Starter Dip switch settings, BMC 335, 2025-03

SYMPTOM/DESCRIPTION

In case the instructions for use have not been followed, the Soft Starter/drum motor may restart automatically after the machine has been used in overload for a longer period of time (*forced shut-off due to overload*).

After the cooldown period of the Soft Starter/drum motor, it restarts automatically.

AFFECTED UNITS

All variants of BMC 335 / BMC 335 Elite.

CORRECTIVE ACTION

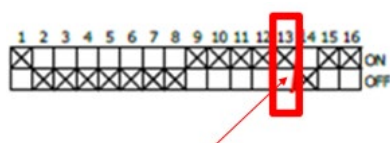
If you notice that the Dip switch no.13 is up (on "1" / "ON"), this means that the Soft Starter (and therefore the drum motor) automatically will restart if the machine is not put in a "safe off mode", by using the OPC or Emergency switch or using the main "ON/OFF" switch after an overload.

Therefore Dip switch no.13 must be manually set to "0" / "OFF".

By setting Dip switch no.13 to position "OFF", the machine must be restarted manually after the cooling down (approx.1-5 min.) of the drum motor.

Which component in the E-box is the Soft Starter? Refer to appendix A.

How do you know that the Dip switch no.13 is set correctly? Refer to appendix B.



PROCEDURE

How to change the setting of Dip switch no.13 to ("ON" / "OFF"), **refer to appendix C.**

PARTS INFORMATION

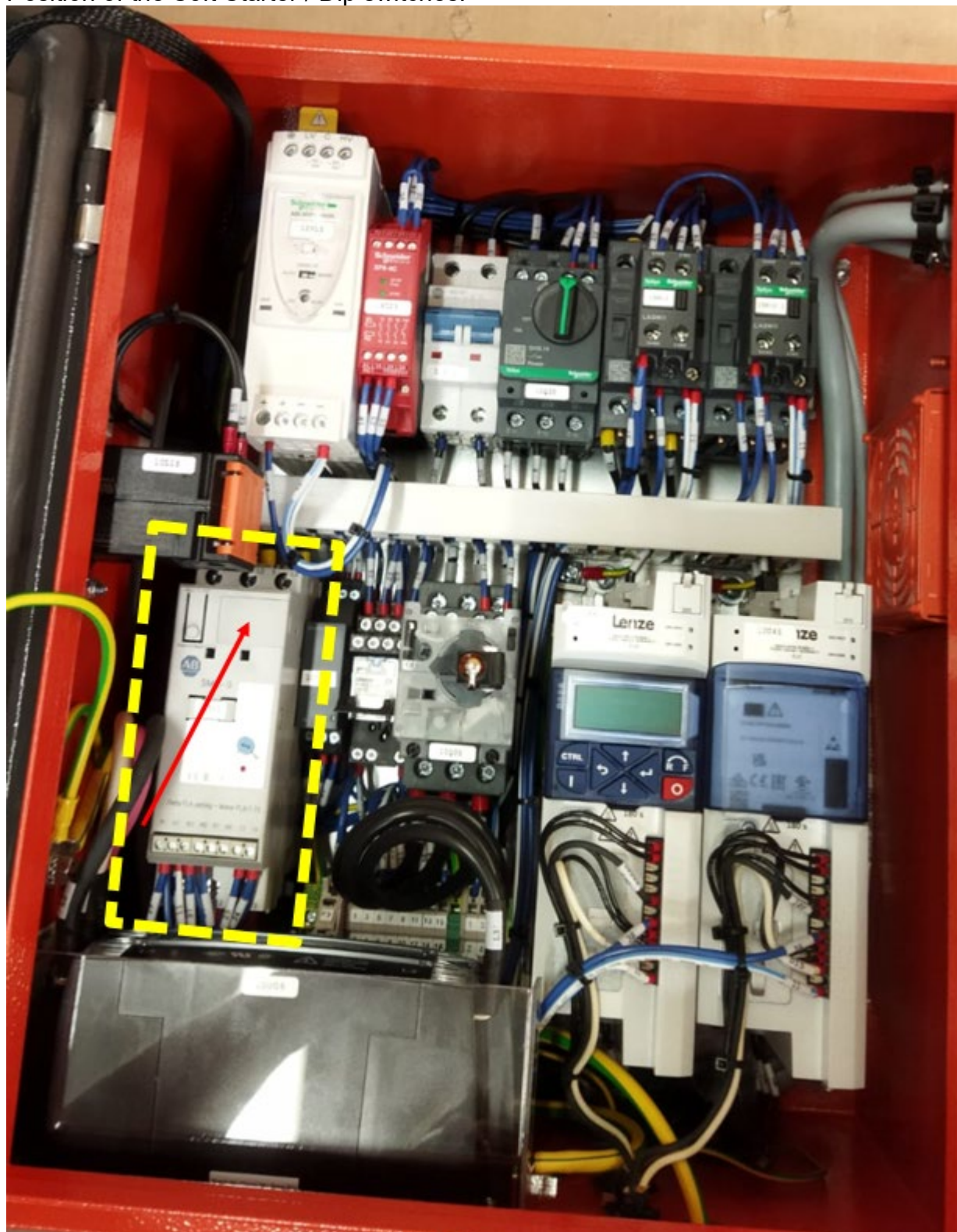
1. Update products in local stock? – **Yes.**
2. Recall products from customers and update? – **No.**
3. Update sold products during next service? – **Yes, check only if the Dip switch settings are set correctly, change if incorrect.**

WARRANTY INFORMATION

Normal warranty policy applies.

Appendix A

Position of the Soft Starter / Dip switches.



Appendix B, Incorrect Dip switch setting of no.13



Correct Dip switch setting of no.13



Appendix C,
Change Dip switch no.13 from "ON" to "OFF".

Step 1:

Turn off the machine and pull out the power plug from the power supply.

Step 2:

Open the E-box lid.

Step 3:

Find the position of the Soft Starter.



Step 4:

Open the lid of the Dip switches carefully with your nail.



Step 5:

Identify Dip switch no.13, as you can see below the Dip switch no.13 is active ("1" / "ON"), so **incorrect** setting.



Step 6:

Use a small flat screwdriver to change the position of the Dip switch no.13 to inactive ("0" / "OFF"), see below:



Step 7:

Close the Dip switch lid and the E-box lid.

Step 8:

The machine is ready, the Soft Starter setting is now set to manually restart the drum motor after an overload fault.

Revision History

Rev.	Date	Order id.	Description
A	2025-03	00145096	Created