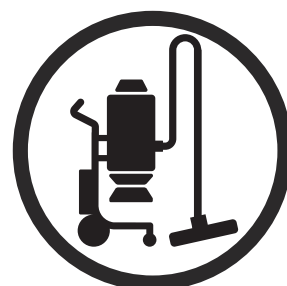


Workshop manual

DE 130 H



English

Contents

1 Introduction

1.1 Document description.....	3
1.2 Target group.....	3
1.3 Revisions.....	3
1.4 Safety.....	3

2 Safety

2.1 Safety definitions.....	4
2.2 General safety instructions.....	4
2.3 Special safety instructions.....	4
2.4 Symbols on the product.....	4

3 Prepare and do servicing on the product

3.1 Maintenance schedule.....	6
3.2 To clean the product.....	6

4 Servicing data

4.1 Prefilter cover.....	7
4.2 HEPA filter cover, control panel and power cord lid.....	8
4.3 Motor housing.....	9
4.4 Chassis.....	10
4.5 Prefilter container.....	11
4.6 Handlebar.....	12

5 Function overview

5.1 Type plate and product serial number.....	13
5.2 Type plate.....	13

6 Firmware

6.1 To do an update of the main circuit board.....	14
--	----

7 Repair and servicing

7.1 Product overview.....	15
7.2 To clean and examine the product parts.....	16
7.3 Prefilter.....	16
7.4 HEPA filter.....	19
7.5 Power cord.....	19
7.6 Circuit board.....	20
7.7 Chassis.....	21
7.8 Container.....	23
7.9 Motor.....	25

8 Troubleshooting

8.1 To connect the product to Husqvarna Service Hub (HSH).....	28
8.2 To do troubleshooting of the Husqvarna Service Hub (HSH).....	28
8.3 Troubleshooting schedule.....	29
8.4 Warnings on the control panel.....	29
8.5 Error codes.....	31

9 Diagrams

9.1 Wiring diagram, EU.....	32
9.2 Wiring diagram, US.....	33

10 Technical data

10.1 Technical data.....	35
10.2 Technical data.....	36

1 Introduction

1.1 Document description

This manual gives a full description of how to do maintenance and repair on the product. It also gives safety instructions that the personnel must obey.

1.2 Target group

This manual is for personnel with a general knowledge of how to do repair and do servicing. All personnel that do repair or do servicing on the product must read and understand the manual.

1.3 Revisions

Changes to the product can cause changes to the maintenance work and spare parts. Separate information is sent out for each change.

Read the manual together with all received information about changes to maintenance and spare parts for the product.

1.4 Safety



WARNING: All personnel that repair or do servicing on the product must read and understand the safety instructions in this workshop manual.

2 Safety

2.1 Safety definitions

Warnings, cautions and notes are used to point out specially important parts of the manual.



WARNING: Used if there is a risk of injury or death for the operator or bystanders if the instructions in the manual are not obeyed.



CAUTION: Used if there is a risk of damage to the product, other materials or the adjacent area if the instructions in the manual are not obeyed.

Note: Used to give more information that is necessary in a given situation.

2.2 General safety instructions

- You must obey the safety instructions.
- You must prevent situations that can cause damage or injury.
- You must read the workshop manual before you do work on the product.
- You must read the operator's manual if you operate the product.
- Do not use a damaged product.
- Do not do work on the product if you have health problems that can cause dangerous situations.
- Do not use the product if you are tired, ill, or under the influence of alcohol, drugs or medicine.
- Do not touch the product if your hands are wet.
- Make sure that only approved persons can come near the product.
- Replace all damaged or missing warning symbol decals.

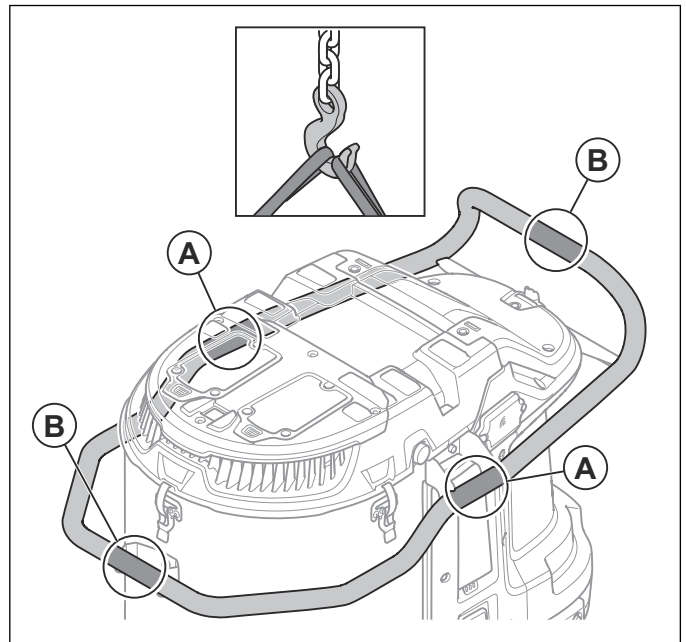
2.3 Special safety instructions



WARNING: Read the warning instructions that follow before you use the product.

- Refer to local regulations and clean the product before you do servicing.
- Find out the type of dust the product has been used for. If the product has been used to asbestos, make sure to clean it according to applicable directive.
- Obey all applicable laws and regulations. If it is necessary, speak to a third party quality decontamination company to discard the waste products.
- Stop the motor and disconnect the power cord before you do servicing unless the instructions in this workshop manual tell you differently.
- Let an approved electrician do all checks on the electric components.

- Do not connect a damaged product to a power source. If the product becomes damaged during operation, disconnect the product and speak to your Husqvarna service center.
- Use the correct tightening torque when you torque the screws. The threads in the plastic parts can easily be damaged.
- To lift the product safely, attach the lifting equipment with lifting straps in lifting points (A) or in lifting points (B). Do not use metal hooks, chains or other lifting equipment with rough edges that can cause damage to the lifting eye. Only soft lifting straps are permitted.



2.4 Symbols on the product



WARNING: This product can be dangerous and cause serious injury or death to the operator or others. Be careful and use the product correctly.



Read the manual carefully and make sure that you understand the instructions before you use the product.



Use hearing protection, eye protection and respiratory protection.



Do not use metal hooks, chains or other lifting equipment with rough edges that can cause damage to the lifting eye. Only use soft lifting straps.



The electrical grounding point on this product is identified by the ground symbol.



This product complies with applicable EC Directives.



This product conforms to applicable UK regulations.



This device is H-classified, certified by a third party according to IEC-60335-2-69, EN-60335-2-69 Annex AA.

This device contains harmful dust. Empty and maintenance operations, including the removal of the dust collection containers, may only be carried out by experts who wear appropriate protective equipment. Never operate the dust extractor without the complete filtration system.



The product is not domestic waste. Recycle it at an approved disposal location for electrical and electronic equipment.



If the product features wireless technology, the symbol is on the product.

Note: Other symbols/decals on the product refer to special certification requirements for some markets.

3 Prepare and do servicing on the product

3.1 Maintenance schedule

The maintenance intervals are calculated from daily use of the product. The intervals change if the product is not used daily.

Maintenance	Before each use	Daily	Weekly	When suction is low	Each 6 months or 600 h	Each 12 months or 2000 h
Do the filter purge procedure. If the suction continues to not be sufficient, clean the prefilter with water.	X			X		
Look for signs of wear or damage of the dust release rubber cone.	X					
Do a check of the power plug and the power cord.	X					
Look for signs of wear, damage or loose connections of the controls before the unit is connected.	X					
Do a check of the hose and the hose connectors.	X					
Look for signs of wear or damage of the plastic parts.	X					
Do a check of the lifting eyes.	X					
Make sure that the Longopac is correct and that it is correctly attached.		X				
Do a check of the filter purge function.		X				
Do a check of the wheels. Look for damage and bad connections.			X			
Do a check of the filter seals			X			
Replace the cleaned prefilter if the suction continues to be not sufficient.				X	X	
Replace the HEPA filter.				X		X
Replace the dust release rubber cone.						X
Replace filter cleaning rubber parts.						X

3.2 To clean the product

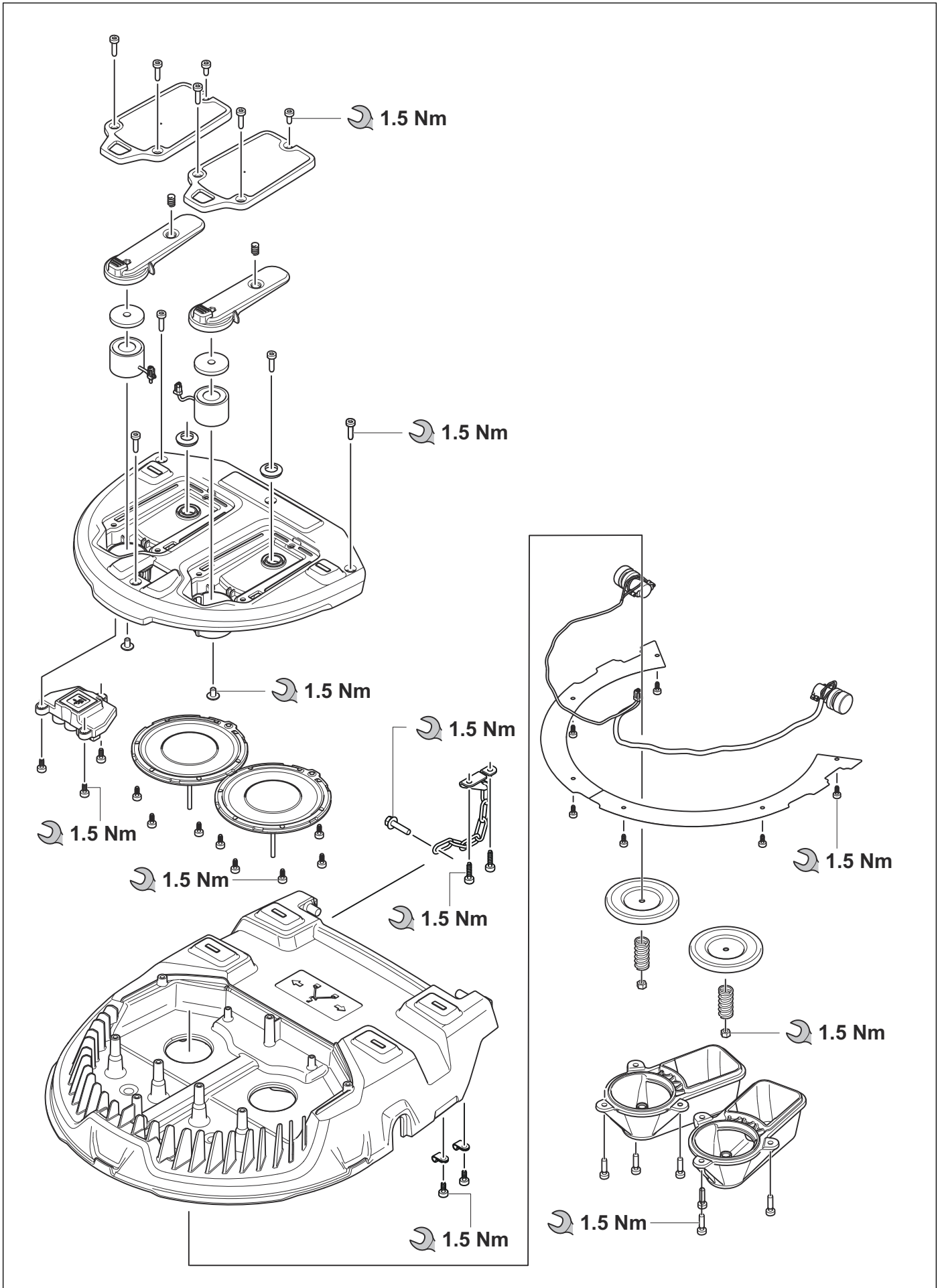


WARNING: Clean the product daily to prevent circulation of dangerous dust.

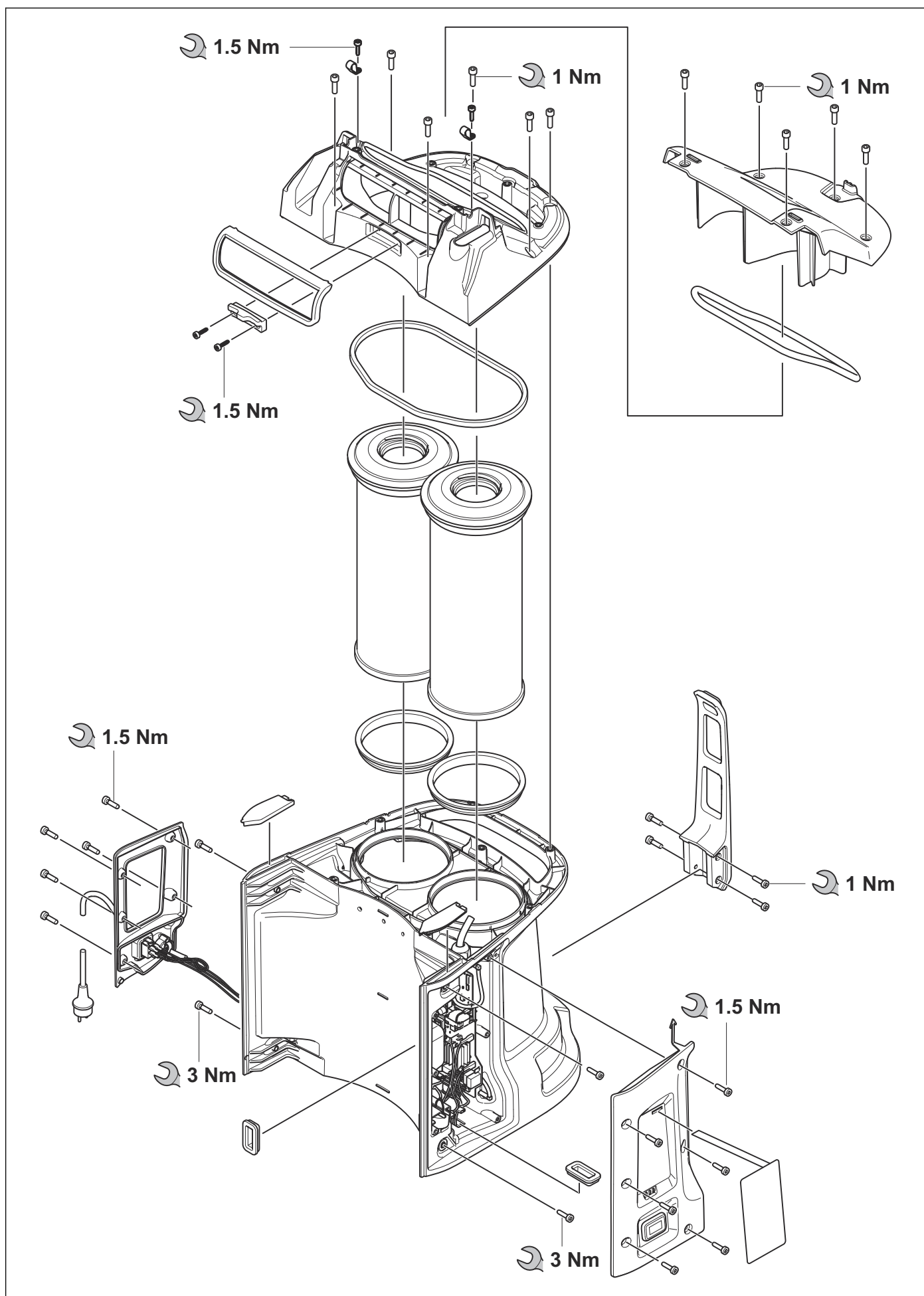
- Clean the product in an applicable area.
- Use approved protective gloves when you clean the product.
- Clean the external surface with a moist cloth.
- Do not use water on electrical components.
- Do not use a high-pressure washer or compressed air to clean the product.

4 Servicing data

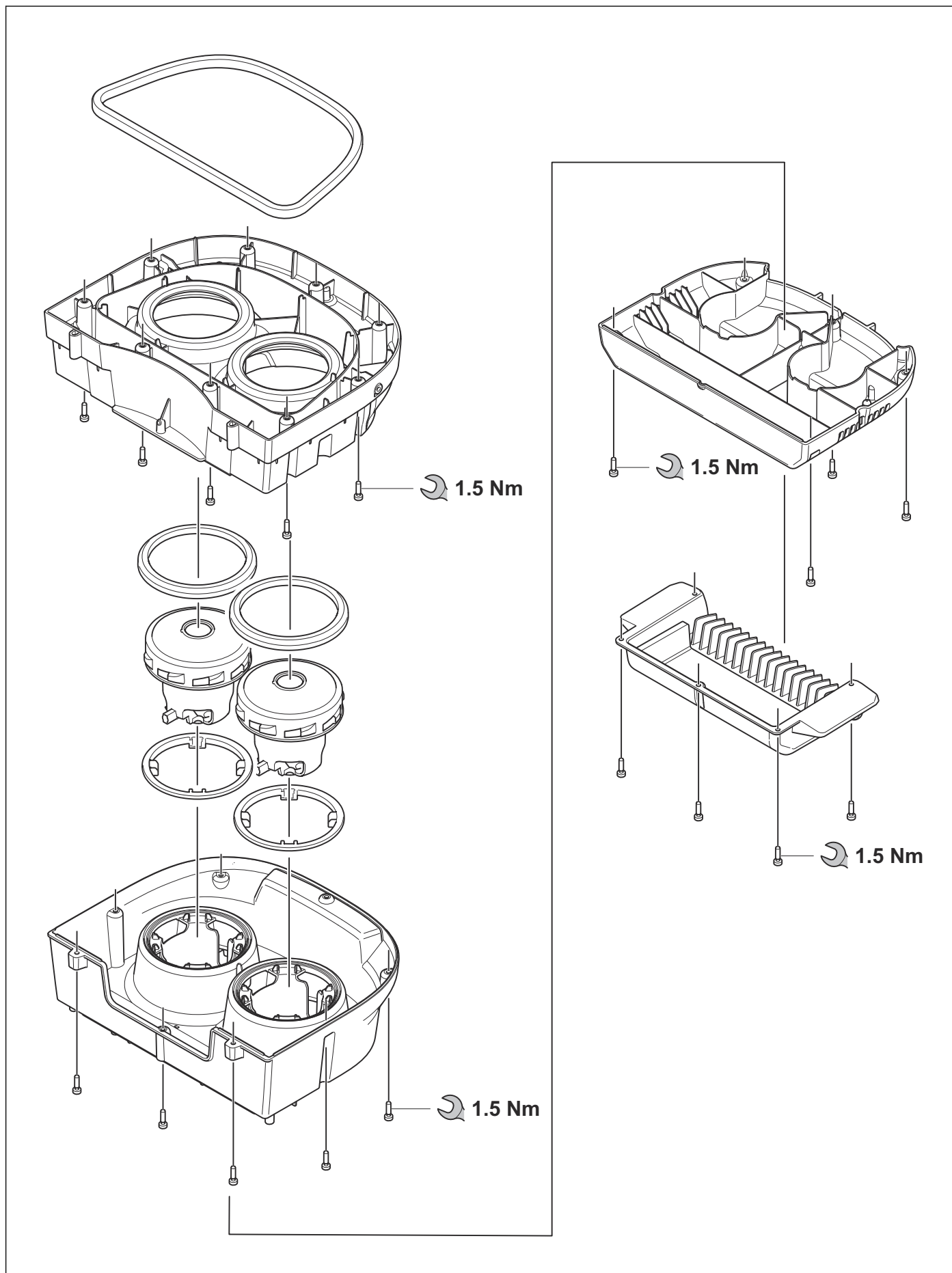
4.1 Prefilter cover



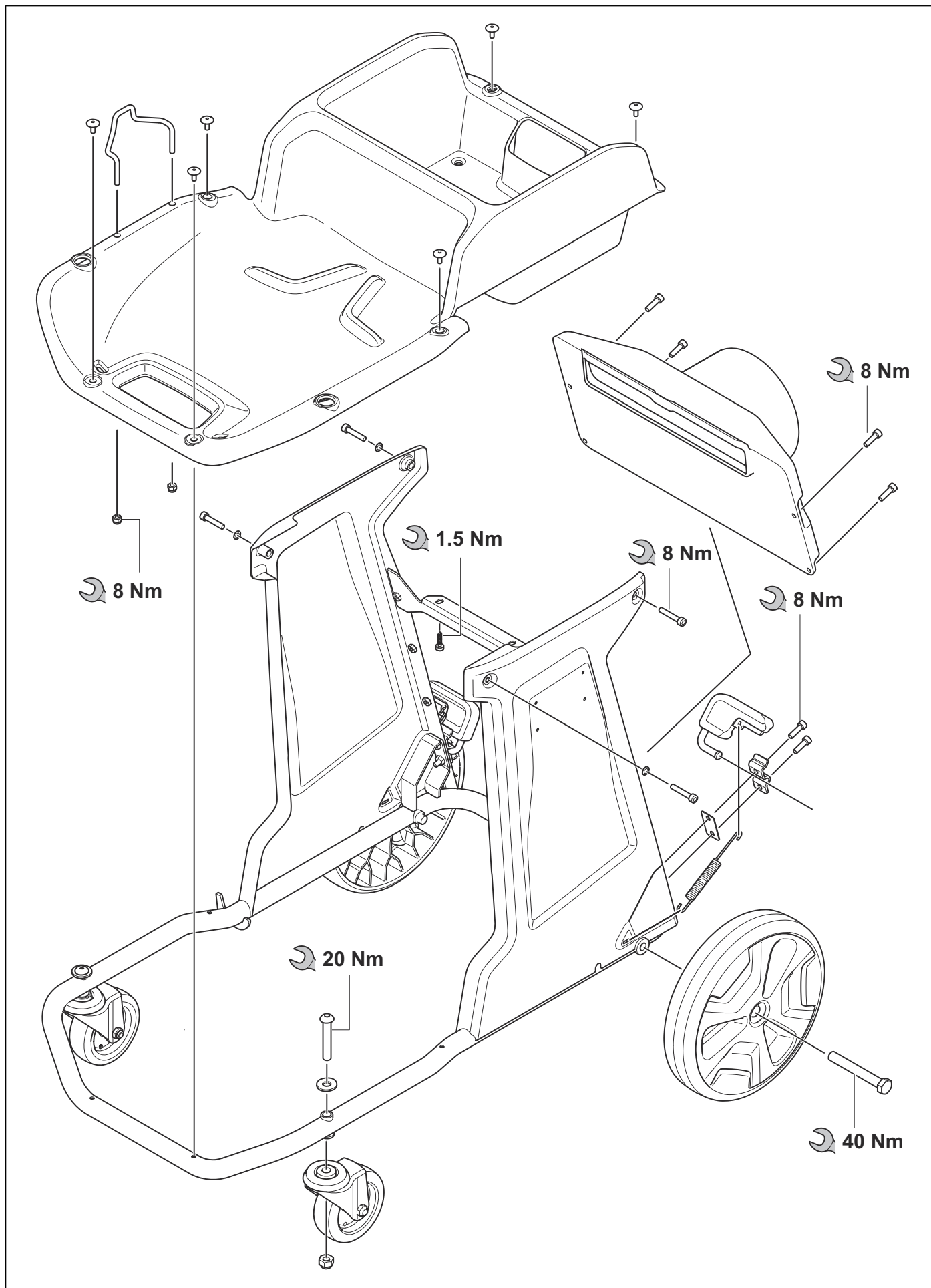
4.2 HEPA filter cover, control panel and power cord lid



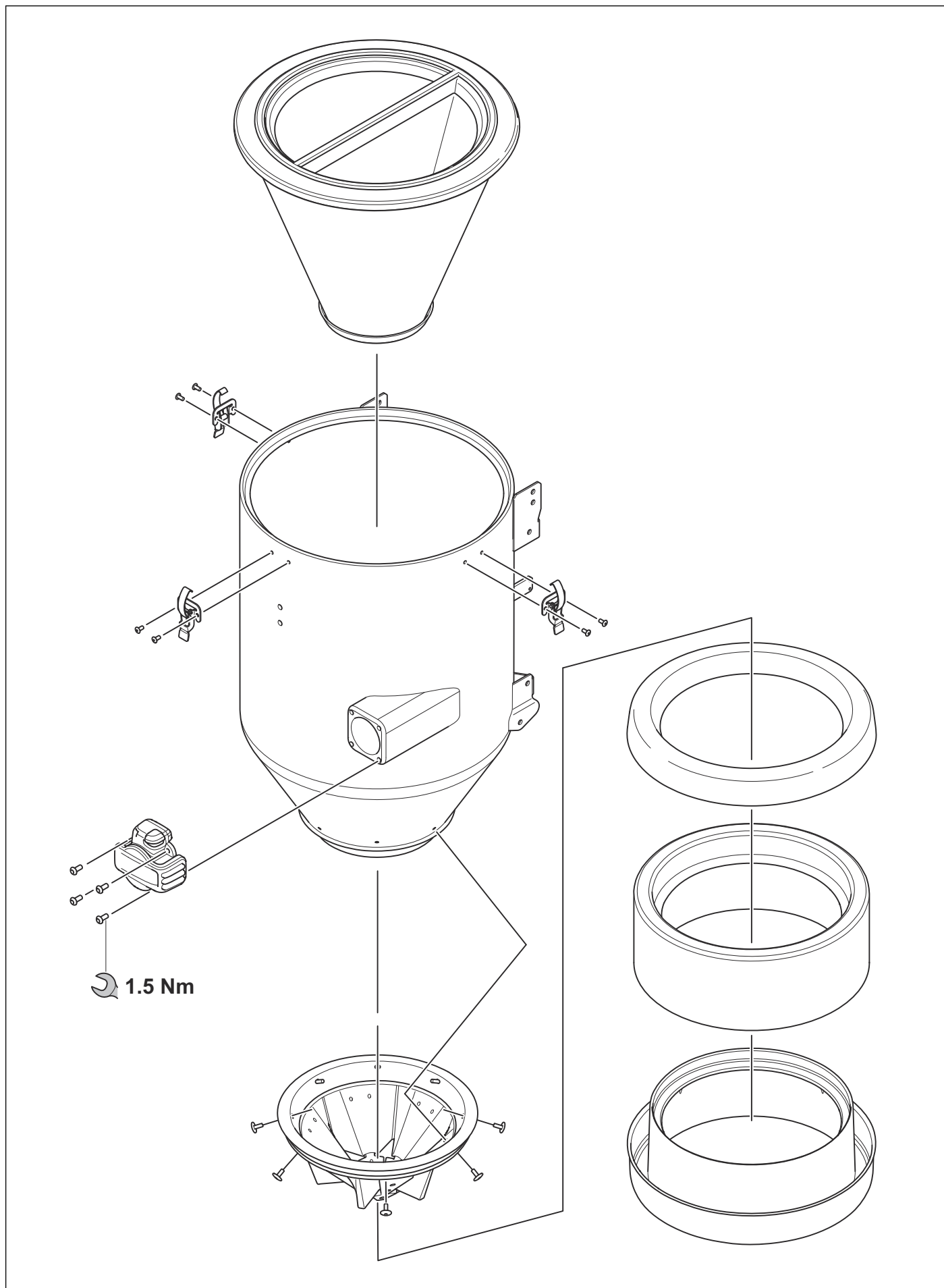
4.3 Motor housing



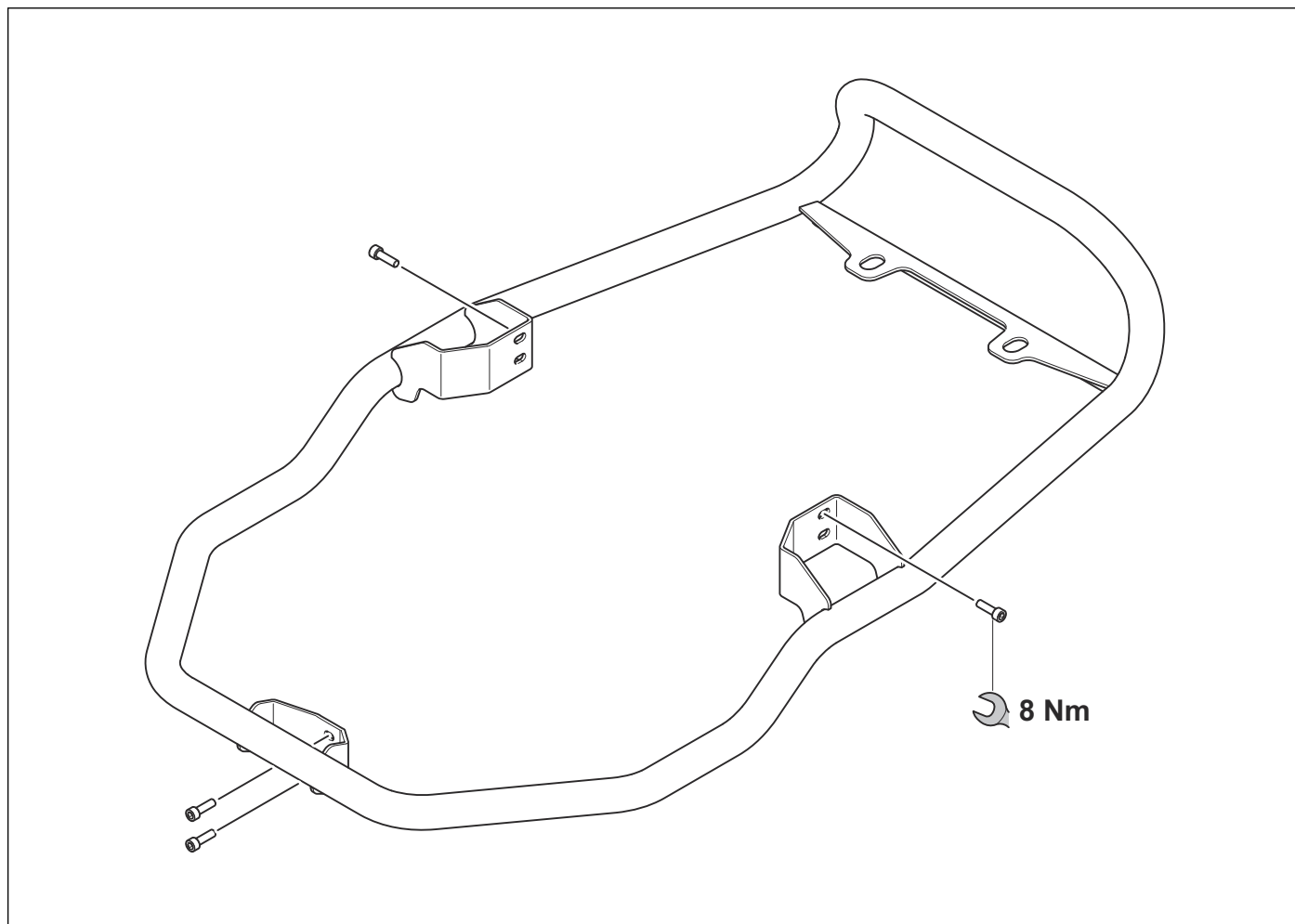
4.4 Chassis



4.5 Prefilter container



4.6 Handlebar

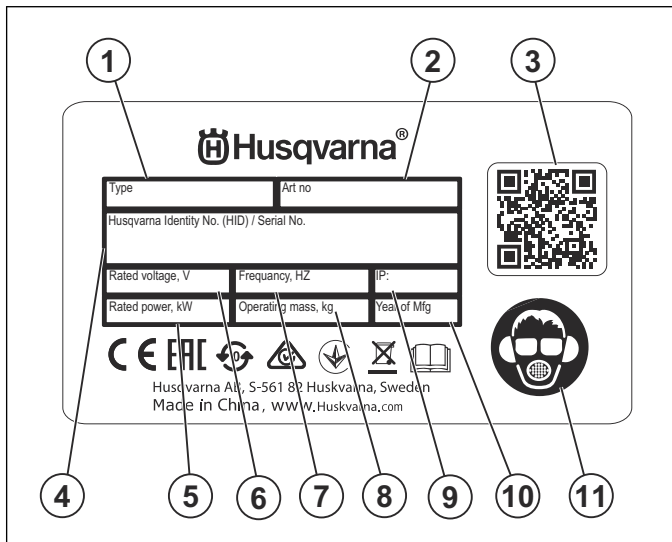


5 Function overview

5.1 Type plate and product serial number

The product serial number is on the type plate. Supply the model name and the article number when you send an order for spare parts.

5.2 Type plate



1. Model
2. Article number
3. Scannable code
4. Serial number
5. Rated power
6. Rated voltage
7. Frequency
8. Weight
9. IP class
10. Production year
11. Personal protective equipment

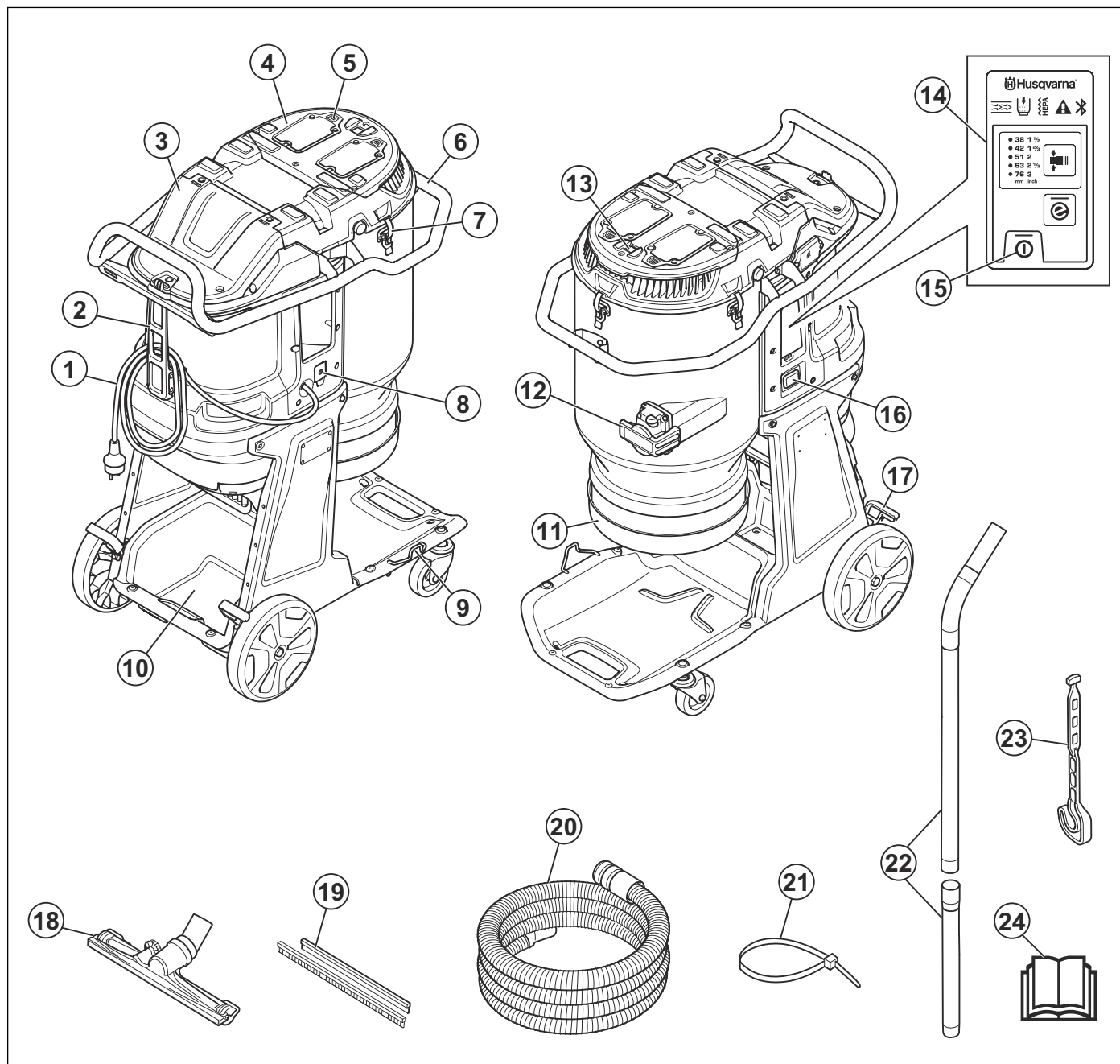
6 Firmware

6.1 To do an update of the main circuit board

1. Stop the power.
2. Refer to *To connect the product to Husqvarna Service Hub (HSH) on page 28.*

7 Repair and servicing

7.1 Product overview



1. Power cord
2. Strap for storage of the power cord and the dust extraction hose
3. HEPA filter cover
4. Prefilter cover
5. Filter purge button
6. Transport handle
7. Clamp for prefilter cover
8. Main switch
9. Floor nozzle holder
10. Storage compartment
11. Longopac holder
12. Connection for dust extraction hose
13. Auto pulse button
14. Control panel

15. ON/OFF button
16. Hour meter
17. Wheel brake
18. Floor nozzle
19. Rubber strips
20. Dust extraction hose
21. Cable tie
22. Handle pipe
23. Storage strap for handle pipe
24. Operator's manual

7.2 To clean and examine the product parts

- Clean and examine all parts fully. You find more instructions in the chapter for each part if special tools or procedures are necessary.
- Replace damaged parts.
- Always use original spare parts.

7.3 Prefilter

7.3.1 To clean the prefilter with water



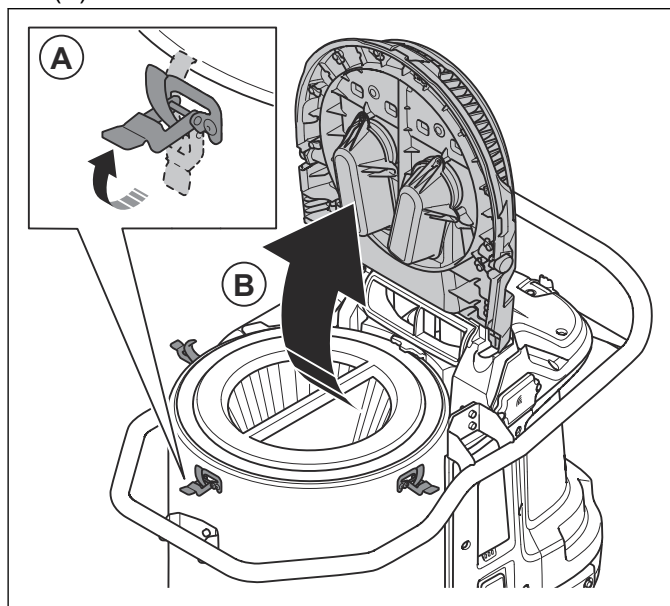
CAUTION: Do not use a high-pressure washer or compressed air to clean the prefilter. Do not hit the prefilter with force to clean it.



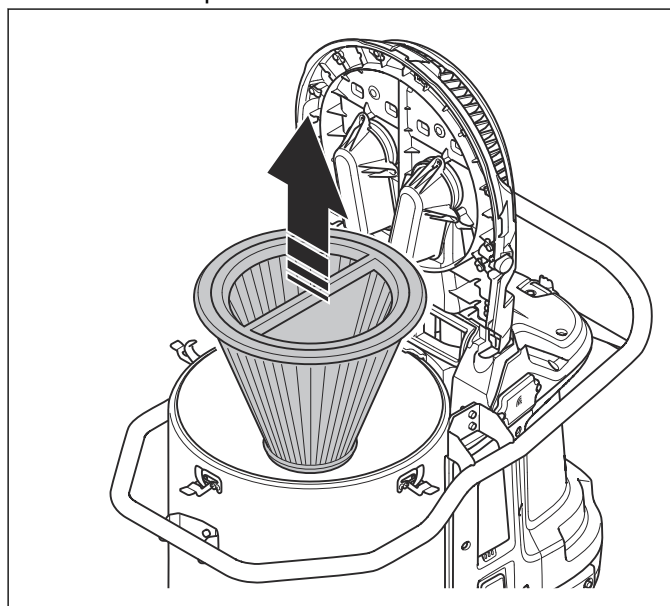
CAUTION: Do not let it dry in full sunlight. The seals will dry out.

Note: To clean the with water will gradually decrease the efficiency of the filter.

1. Loosen the clamps (A) and open the prefilter cover (B).



2. Remove the prefilter.



3. Clean the prefilter with running water from the inner surface of the prefilter.



CAUTION: The water pressure must not be higher than 4 bars.



CAUTION: Do not hit or drag items across the filter surface. This will do damage to the filter.

4. Let the prefilter dry fully.



CAUTION: The prefilter must be 100% dry before you install it into the housing.

5. Install the prefilter, close the prefilter cover and tighten the clamps.

If the prefilter cannot be fully cleaned or if it is damaged, it must be replaced. Refer to *To replace the prefilter on page 17*.

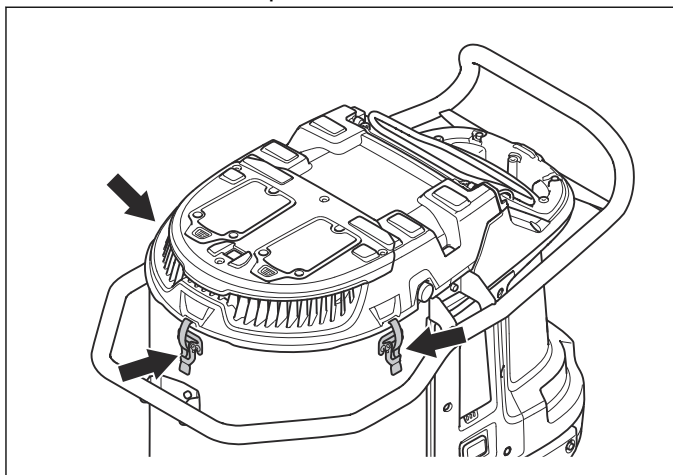
7.3.2 To replace the prefilter

1. Remove the prefilter. Refer to *To clean the prefilter with water on page 16*.
2. Put the prefilter carefully in a plastic bag.
3. Discard the plastic bag correctly. Refer to local regulations.
4. Install the new prefilter.

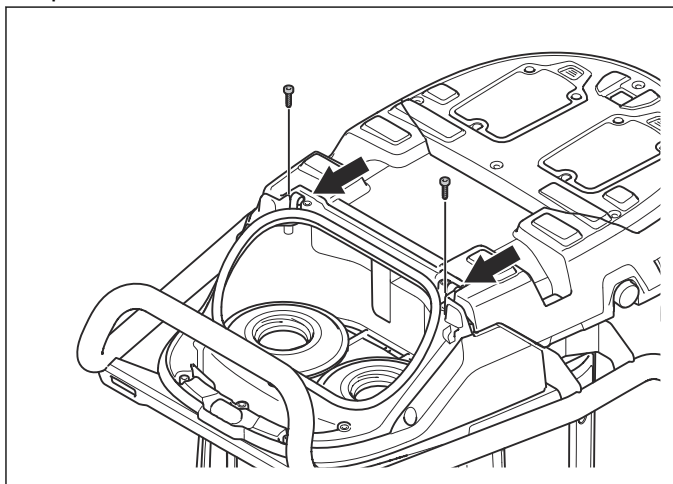
If the suction is not sufficient when a new prefilter is installed, it is necessary to replace the HEPA filter. Refer to *To replace the HEPA filters on page 19*.

7.3.3 To remove and install the prefilter cover

1. Remove the HEPA filter cover. Refer to *To replace the HEPA filters on page 19*.
2. Loosen the 3 clamps.



3. Remove the 2 screws and the 2 hinges that hold the prefilter cover.

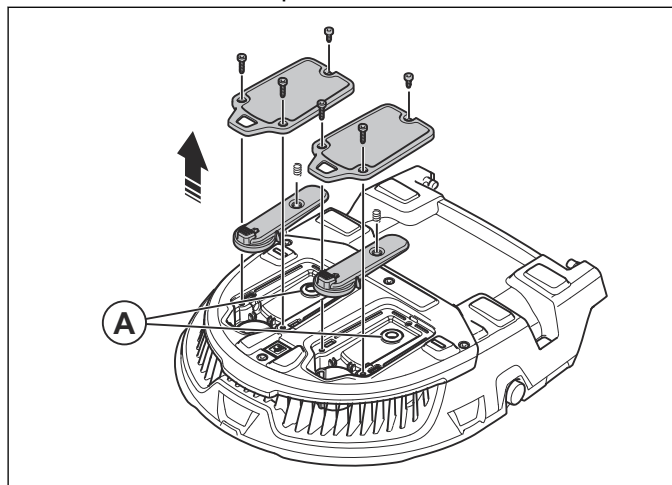


4. Remove the prefilter cover.
5. Disconnect the cable.

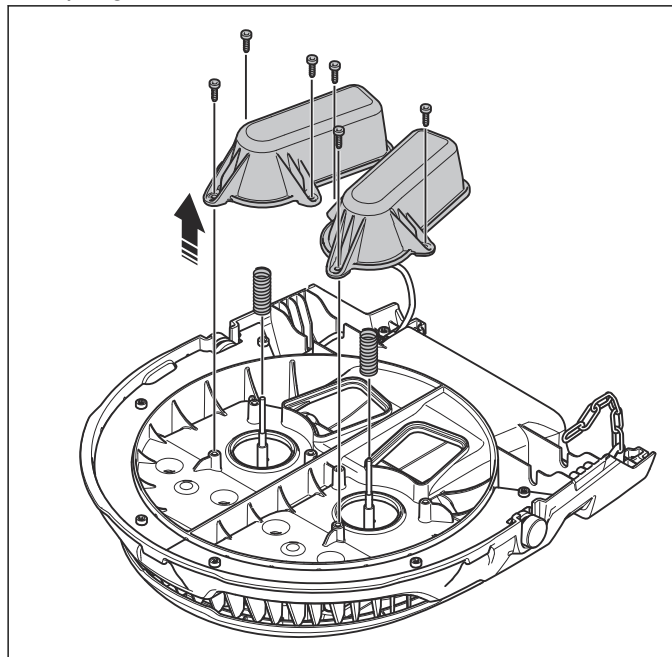
6. Install the prefilter cover in the opposite sequence.

7.3.4 To disassemble and assemble the prefilter cover

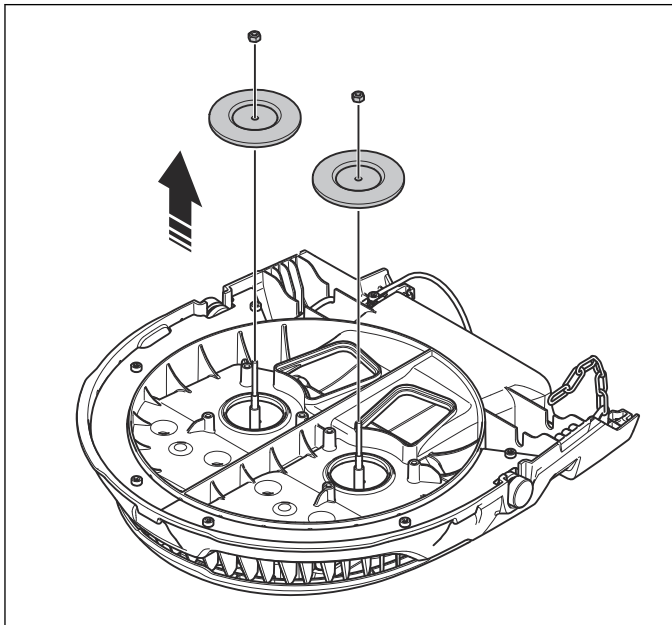
1. Remove the prefilter cover. Refer to *To remove and install the prefilter cover on page 17*.
2. Remove the 6 screws, the 2 lids, the 2 springs, and the 2 levers for the pressure release valves.



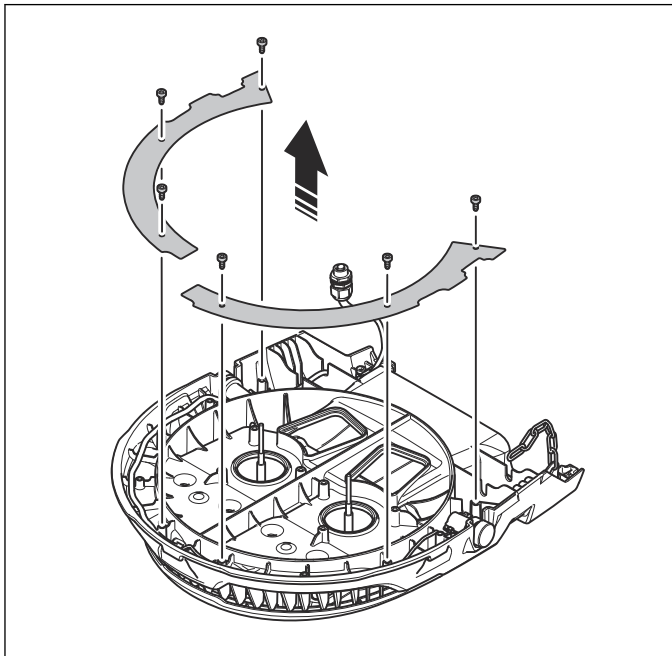
3. Make sure that the 2 seals (A) are not damaged. If it is necessary, replace the seals.
4. Remove the 6 screws, the 2 covers, and the 2 springs.



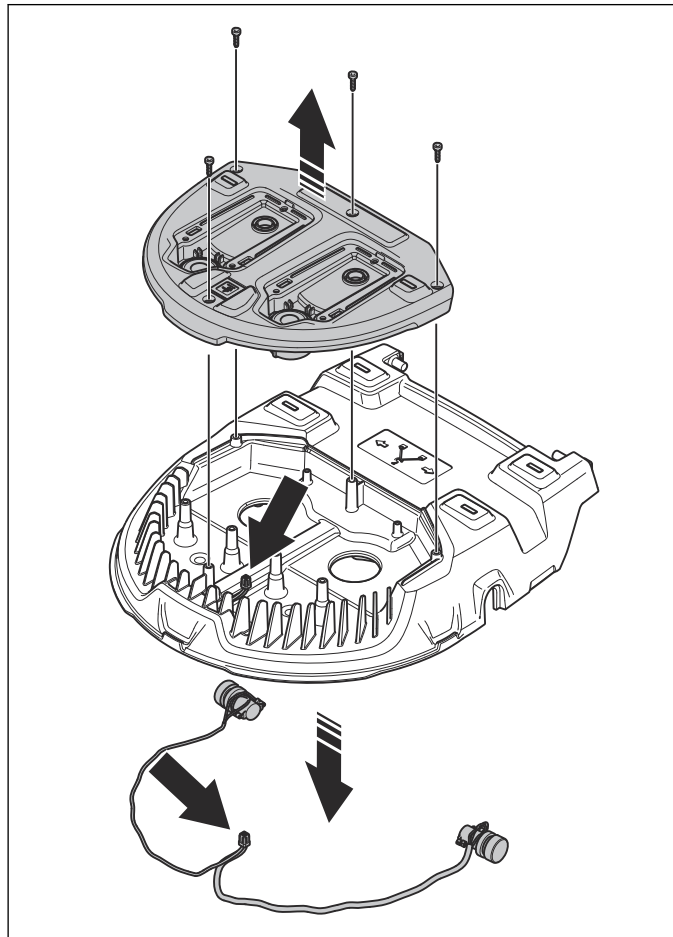
5. Remove the 2 nuts and the pressure release valves.



6. Remove the 6 screws and the 2 plates.



7. Remove the 4 screws on the filter cleaning cover.



8. Carefully lift the filter cleaning cover and disconnect the cable.

9. Remove the filter cleaning cover, the cable, and the 2 lamps.

10. Examine the seal for damage or wear.

11. Assemble the prefilter cover in the opposite sequence.

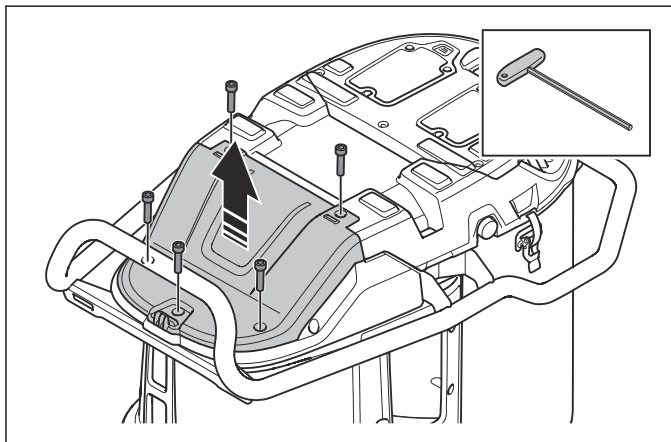
7.4 HEPA filter

7.4.1 To replace the HEPA filters

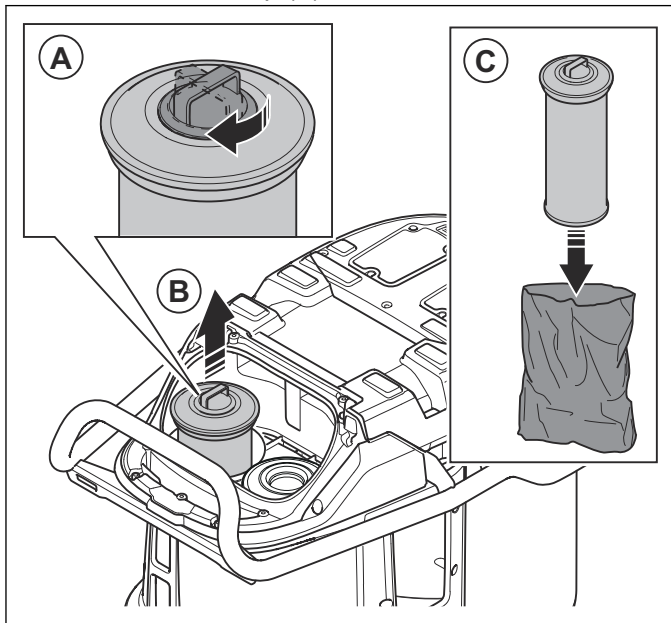


WARNING: Use approved eye protection and respiratory protection when you do servicing on the HEPA filters.

1. Remove the 5 screws and the HEPA filter cover.

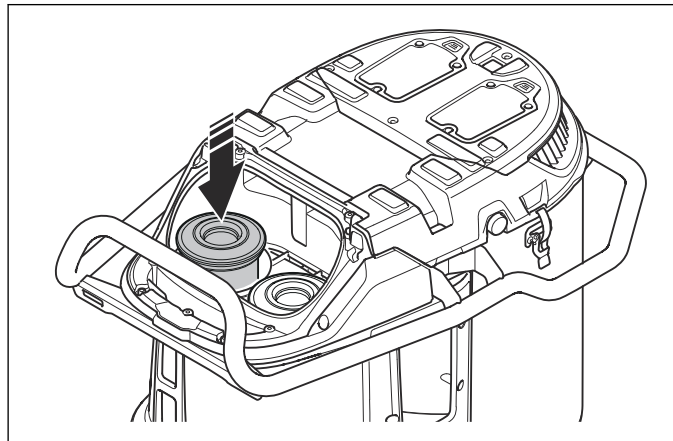


2. Attach the dust cap (A).



3. Carefully lift the HEPA filters (B) and put them in the plastic bags (C) that came with the new HEPA filters.

4. Install the new HEPA filters.



5. Examine the gasket on the HEPA filter cover for wear and damage. If it is necessary, replace the gasket.
6. Install the HEPA filter cover and the 5 screws.

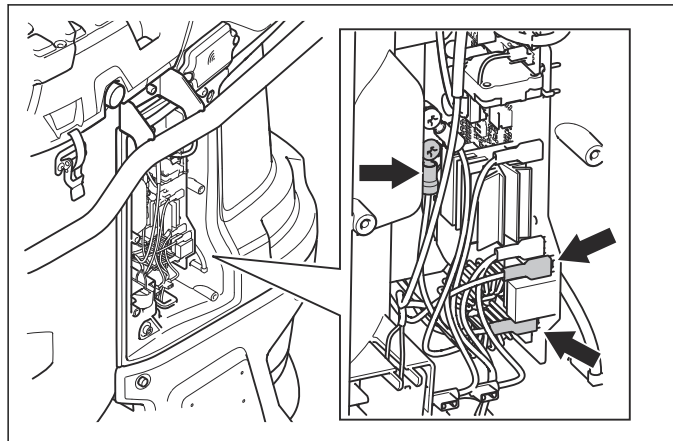
7.5 Power cord

7.5.1 To remove and install the power cord

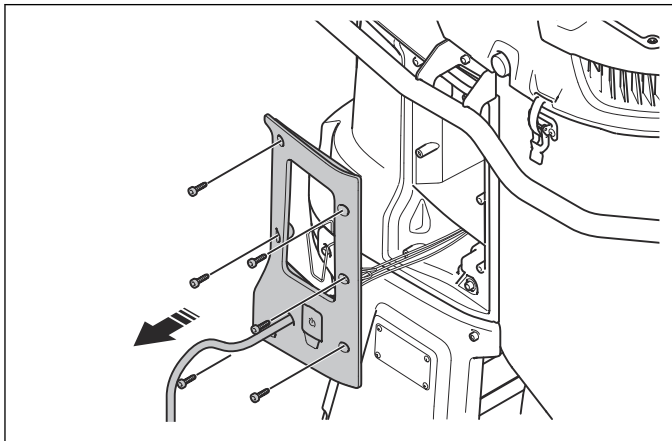


WARNING: Disconnect the power plug before you remove the power cord.

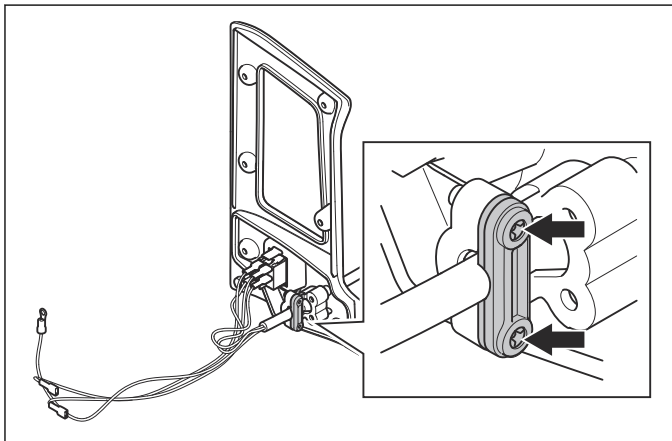
1. Remove the control panel. Refer to *To remove and install the control panel on page 20*.
2. Disconnect the power cord connectors from the circuit board. Refer to *Diagrams on page 32* for wiring diagram.



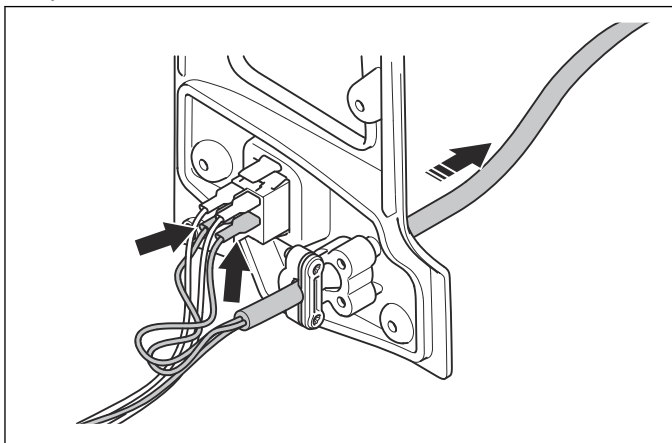
3. Remove the screws and the lid for the power cord.



4. Loosen the 2 screws on the strain relief.



5. Disconnect the 2 power cord cables from the connectors on the main switch and pull out the power cord.



6. Install the power cord in the opposite sequence. Do an electrical safety test when you have installed the power cord. Obey local regulations.

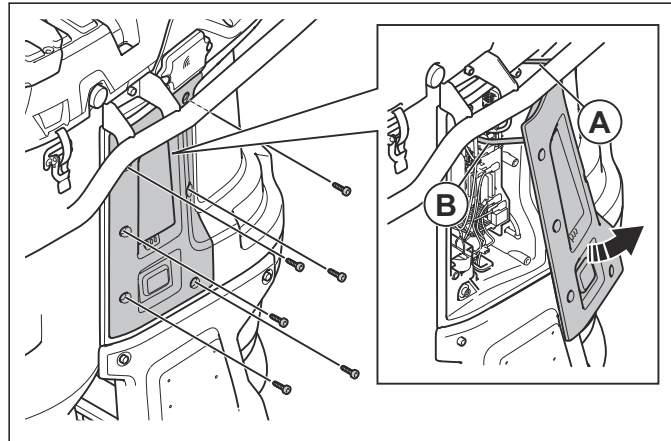
7.6 Circuit board

7.6.1 To remove and install the control panel



WARNING: Disconnect the power plug before you remove the power cord.

1. Remove the 6 screws and carefully pull out the control panel. The control panel is attached to the product with a plastic hook (A).



CAUTION: Be careful when you pull the control panel. The ribbon cable (B) and plastic hook can easily become damaged.

2. Make a note of how the cables are connected to the control panel.
3. Disconnect the ribbon cable from the connector on the control panel.
4. Disconnect the cables from the hour meter.
5. Install the control panel in the opposite sequence.

7.6.2 To remove the circuit board



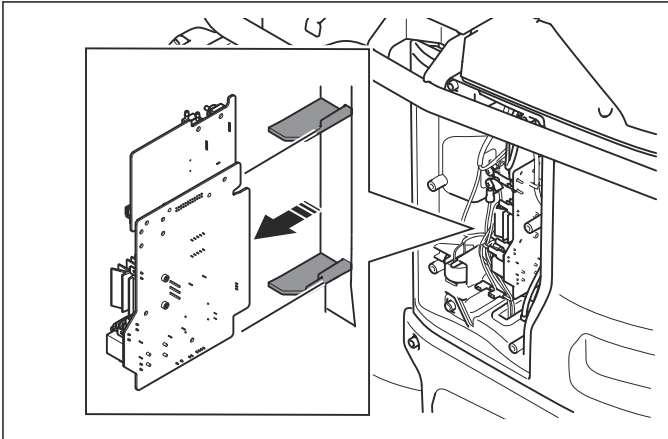
CAUTION: Always use ESD wristbands. Make sure that workbenches and storage areas for used components have ESD protection.



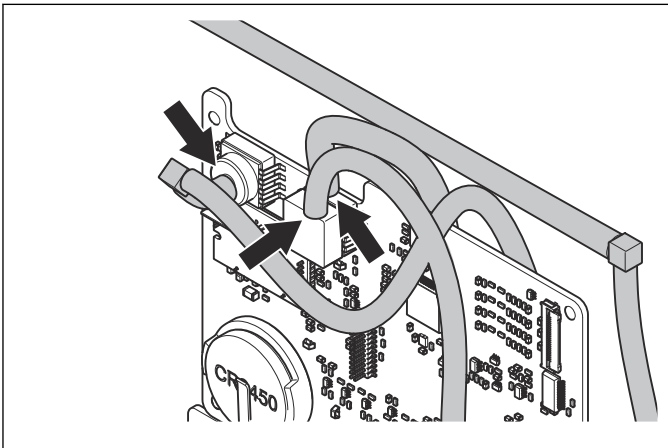
CAUTION: Do not pull the air hoses. The circuit board and the air connectors are easily

damaged. The air hoses must be cut and removed carefully.

1. Remove the control panel. Refer to *To remove and install the control panel on page 20*.
2. Carefully pull out the circuit board.



3. Disconnect the connectors from the circuit board. Refer to *Diagrams on page 32*.
4. Carefully cut the air hoses and remove them from the circuit board.



7.6.3 To install the circuit board

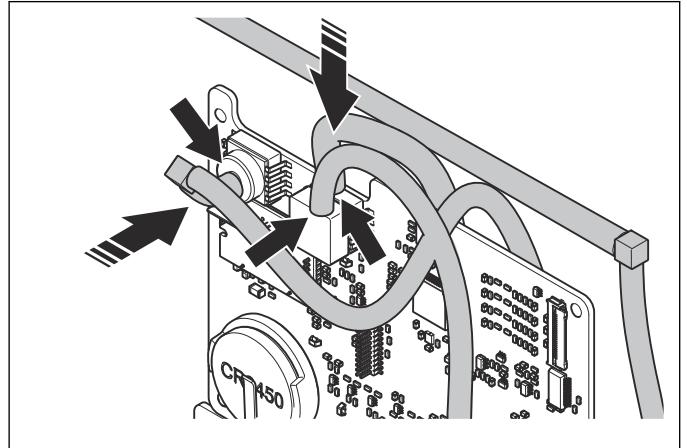


CAUTION: Always use ESD wristbands. Make sure that workbenches and storage areas for used components have ESD protection.

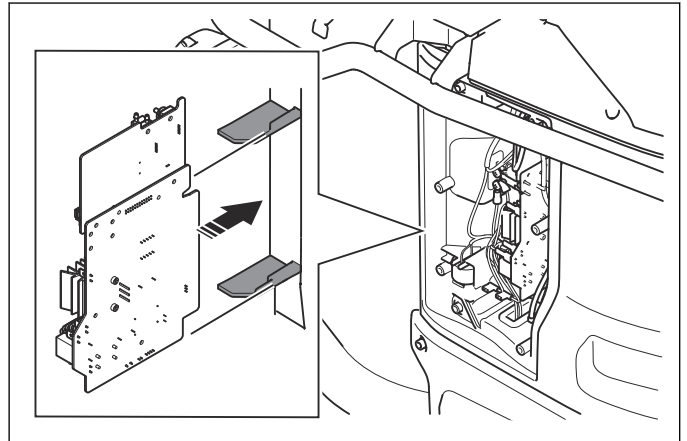


CAUTION: The circuit board and the air connections are easily damaged. The air hoses must be installed carefully.

1. Connect the electrical connectors to the circuit board. Refer to *Diagrams on page 32*.
2. Carefully install the air hoses to the circuit board.



3. Install the circuit board.



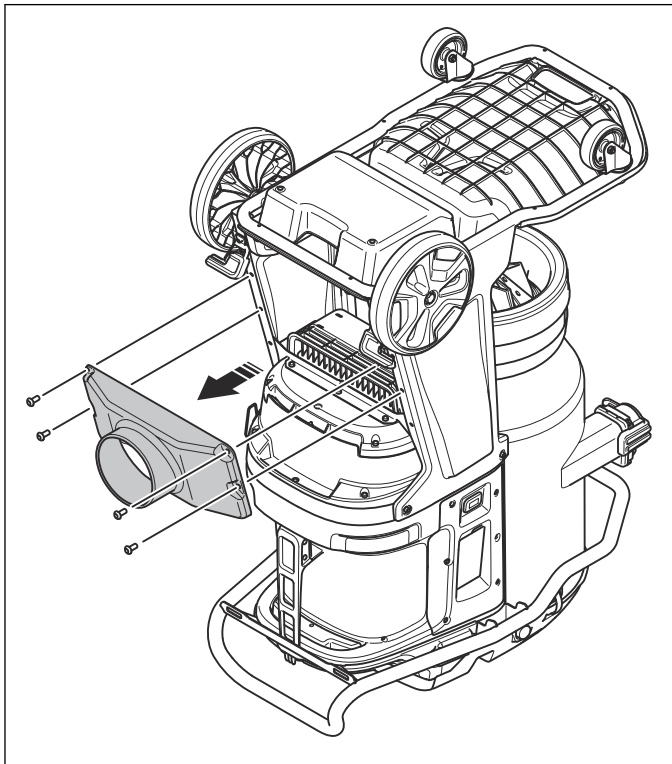
4. Do an update of the firmware in the product. Refer to *Firmware on page 14*.
5. Install the control panel lid.

7.7 Chassis

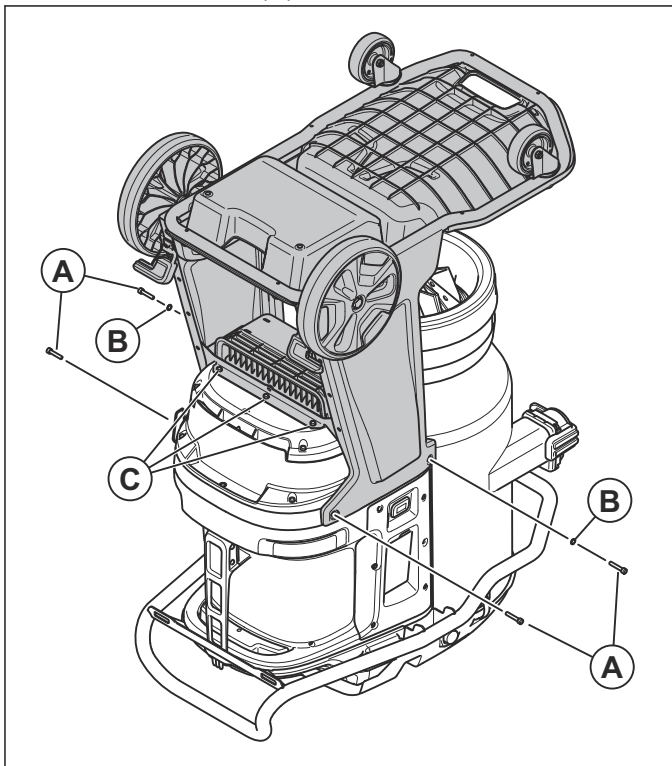
7.7.1 To remove and install the chassis

1. Remove the Longopac.
2. Put the product with the top side down.

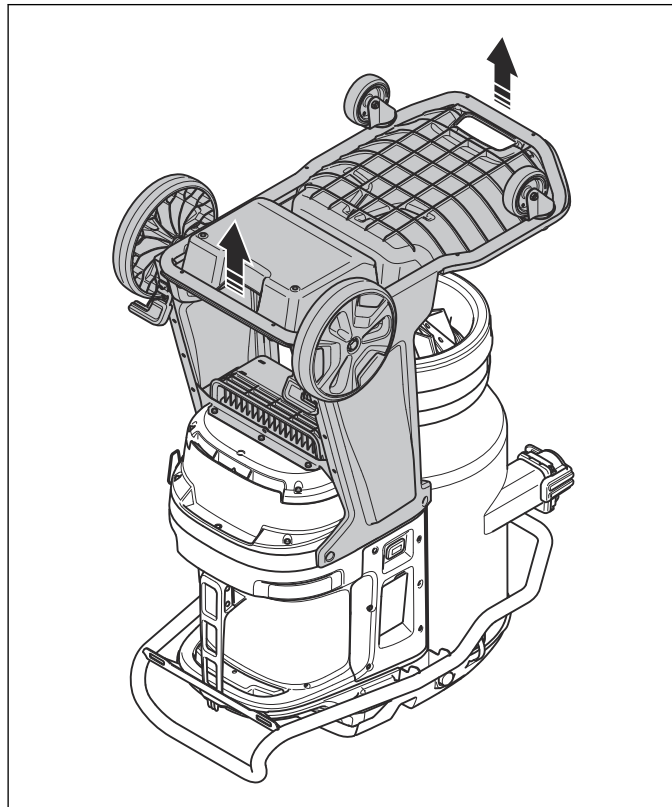
3. Remove the 4 screws and the air duct.



4. Remove the 4 screws (A), the 2 lock washers (B), and the 3 screws (C).



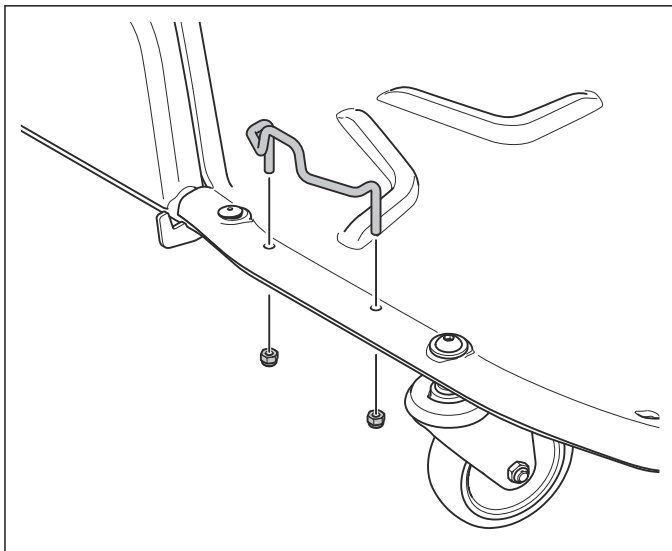
5. Remove the chassis.



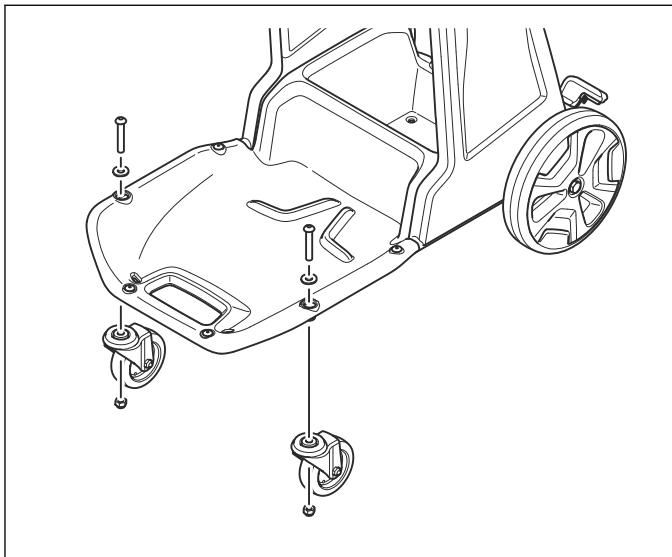
6. Install the chassis in the opposite sequence.

7.7.2 To remove and install the plate

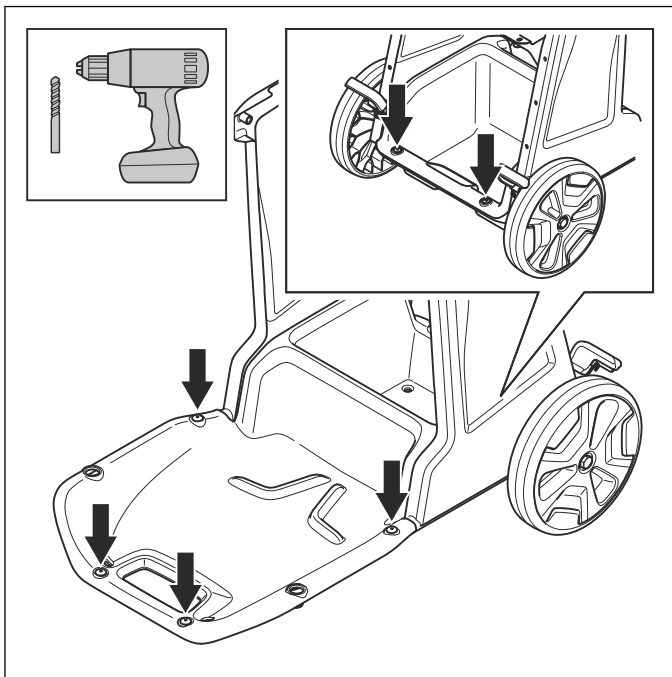
1. Remove the 2 nuts and the holder.



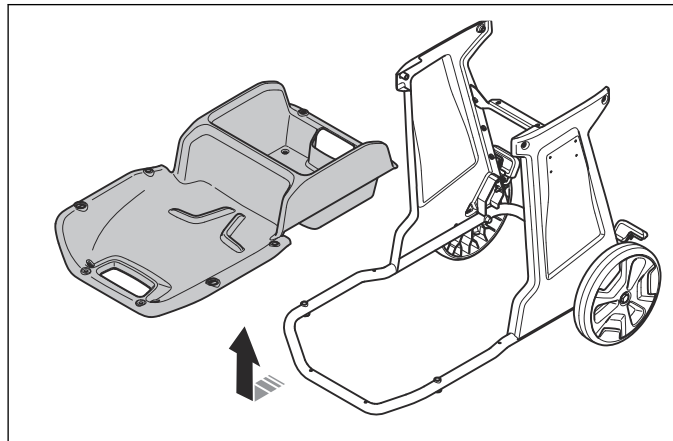
2. Remove the wheels.



3. Remove the rivets. Use a 4.5 mm drill bit.



4. Remove the plate.

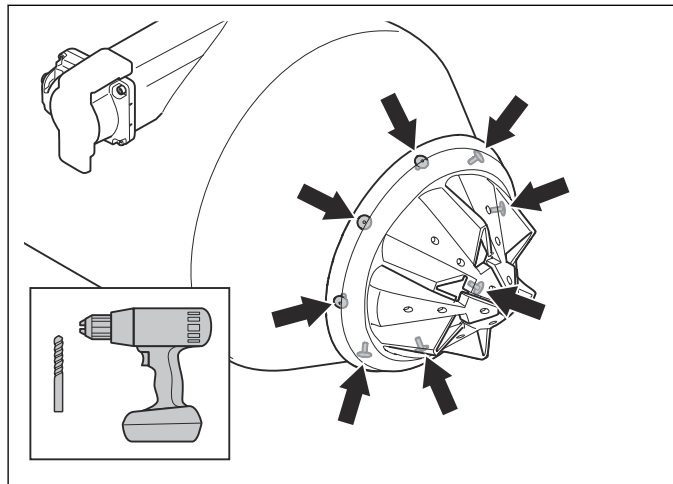


5. Install the plate in the opposite sequence.

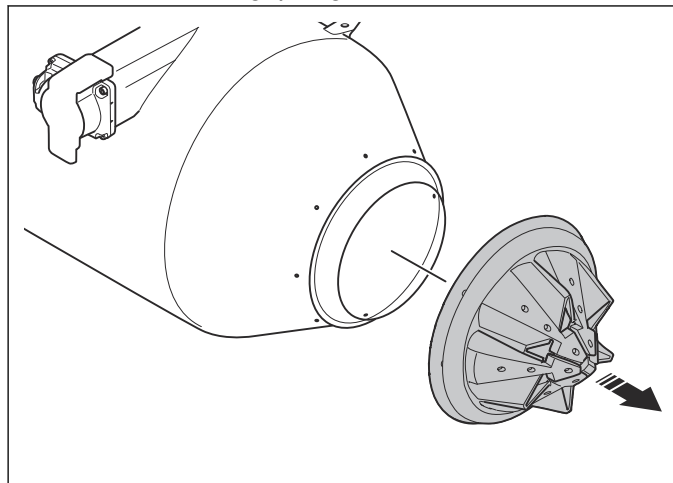
7.8 Container

7.8.1 To remove and install the Longopac gasket

1. Remove the Longopac if it is installed.
2. Remove the rivets. Use a 4.5 mm drill bit.



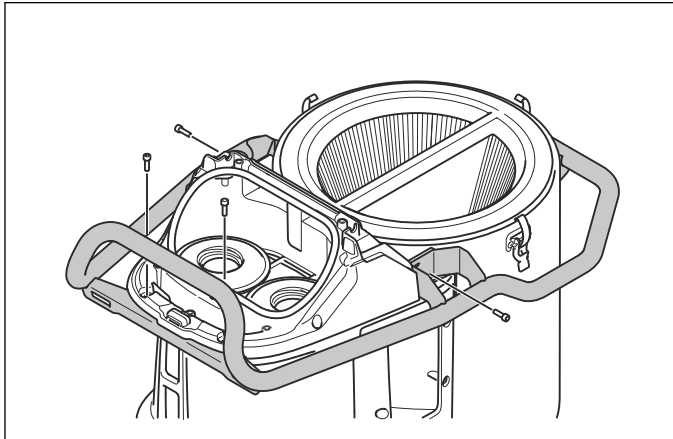
3. Remove the Longopac gasket.



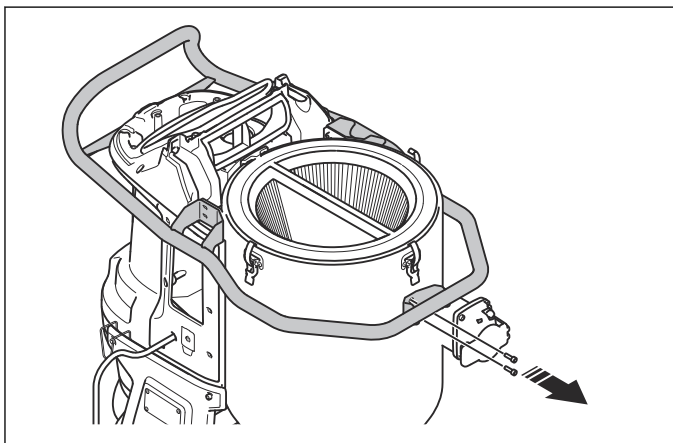
4. Install the Longopac gasket in the opposite sequence.

7.8.2 To remove and install the transport handle

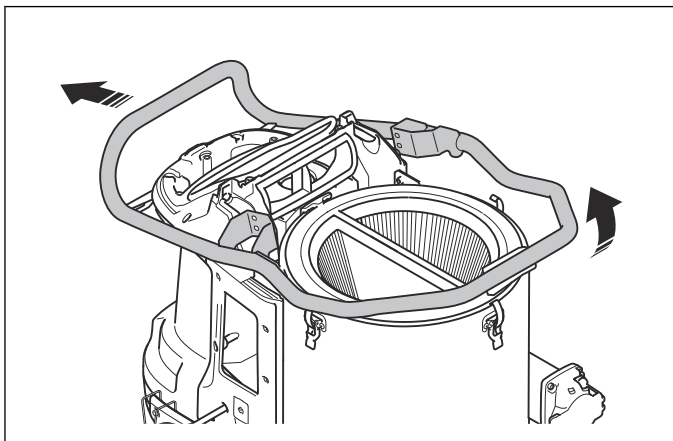
1. Remove the prefilter cover. Refer to *To remove and install the prefilter cover on page 17*.
2. Remove the HEPA filter cover. Refer to *To replace the HEPA filters on page 19*.
3. Remove the control panel. Refer to *To remove and install the control panel on page 20*.
4. Remove the 4 screws.



5. Remove the 2 screws.



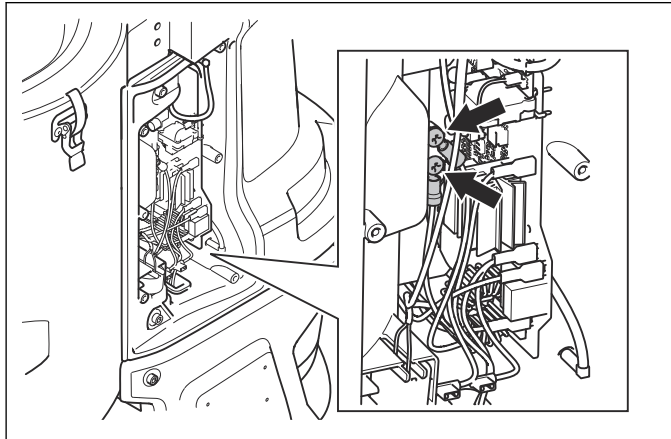
6. Carefully lift the front of the transport handle and then move it rearward to remove it.



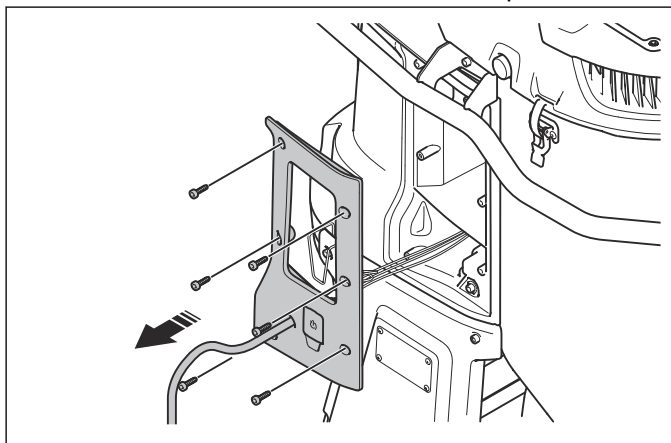
7. Install the transport handle in the opposite sequence.

7.8.3 To remove and install the prefilter container

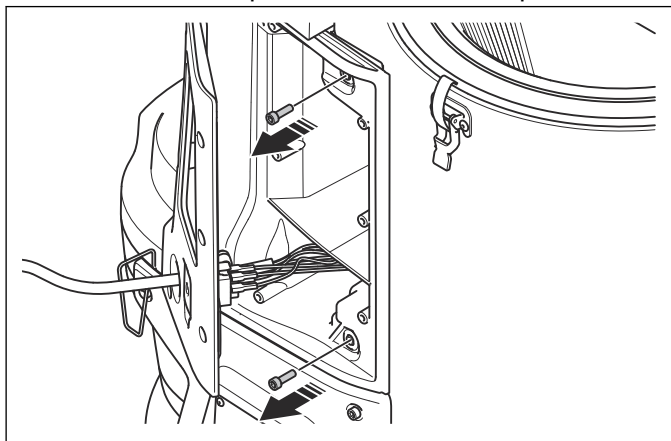
1. Remove the control panel. Refer to *To remove and install the control panel on page 20*.
2. Remove the prefilter cover. Refer to *To remove and install the prefilter cover on page 17*.
3. Remove the transport handle. Refer to *To remove and install the transport handle on page 24*.
4. Disconnect the ground wires.



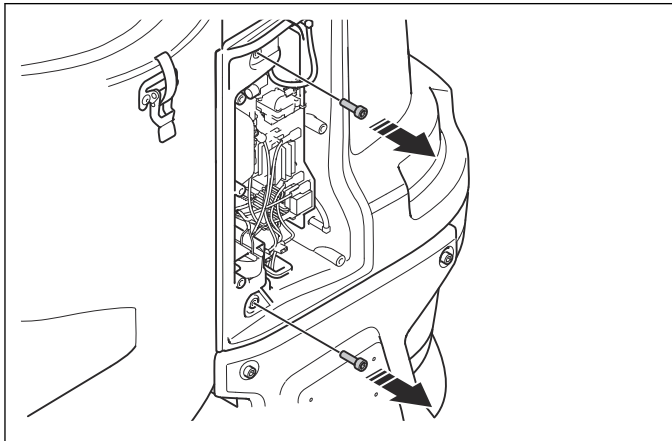
5. Remove the screws and the lid for the power cord.



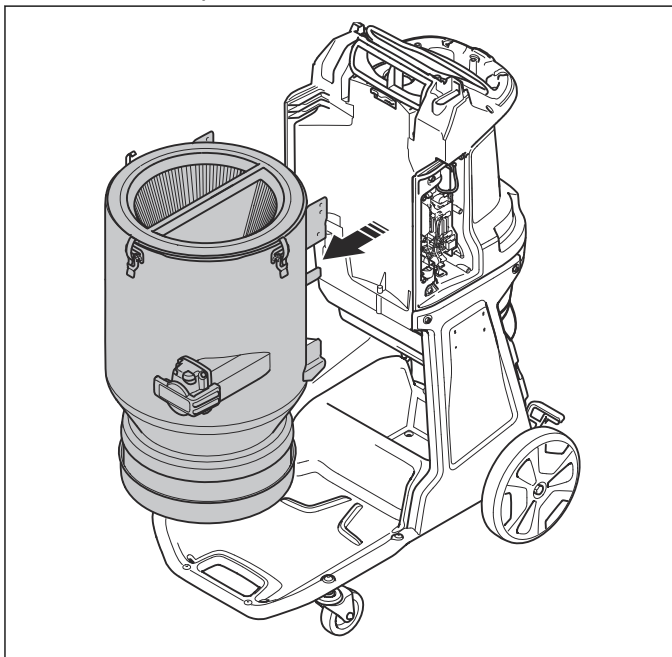
6. Remove the 2 screws that hold the prefilter container on the power cord side of the product.



7. Remove the 2 screws that hold the prefilter container on the control panel side of the product.



8. Remove the prefilter container.

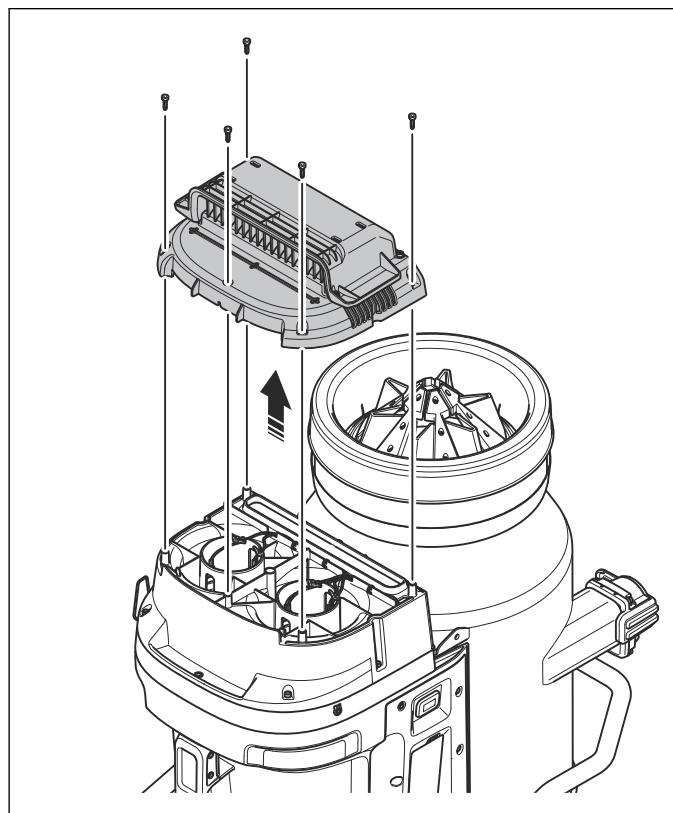


9. Install the prefilter container in the opposite sequence.

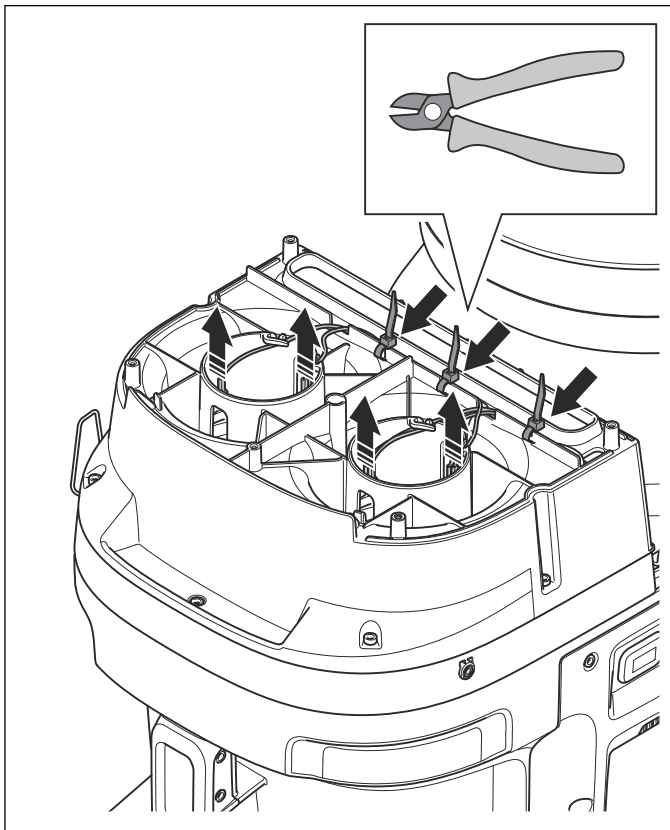
7.9 Motor

7.9.1 To disassemble and assemble the motor housing

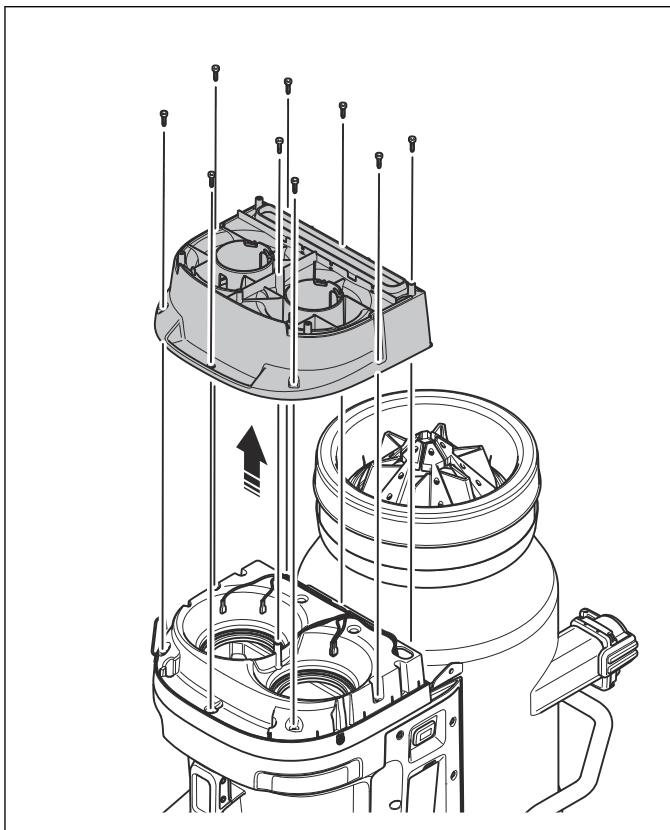
1. Remove the chassis. Refer to *To remove and install the chassis on page 21.*
2. Remove the 5 screws and the cover.



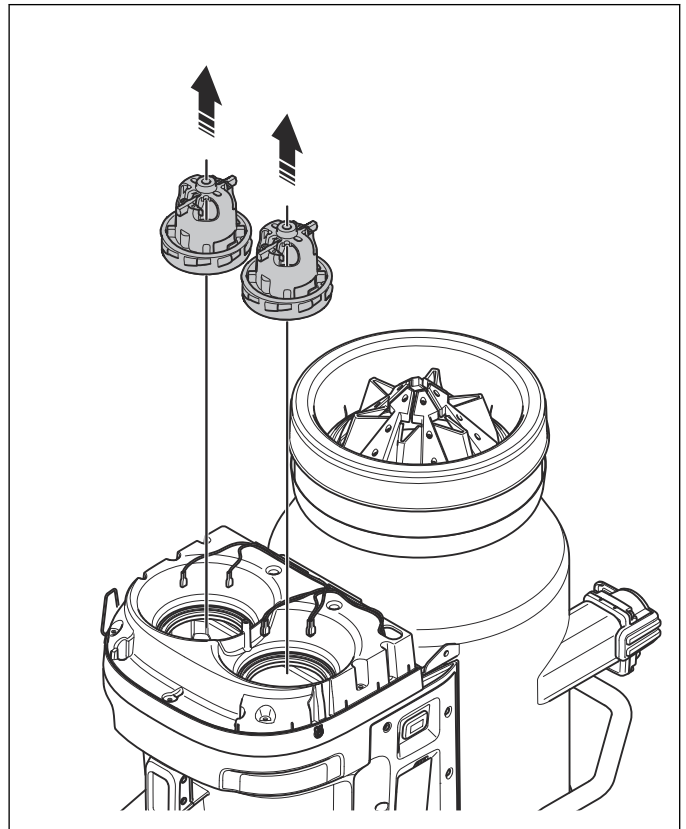
3. Cut the cable ties and disconnect the cables from the motors.



4. Remove the 9 screws and the motor cover.



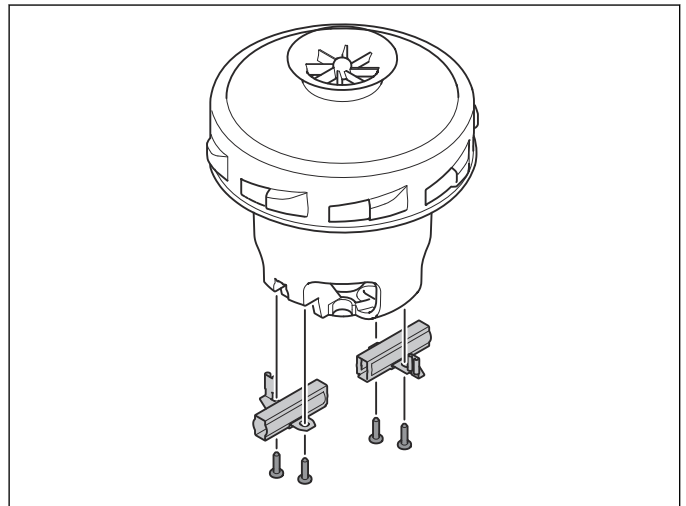
5. Remove the 2 motors.



6. Examine the motors for wear and damage. Replace the motors if it is necessary.
7. Assemble the motor housing in the opposite sequence. Attach the cables with new cable ties.

7.9.2 To replace the brushes on the motor

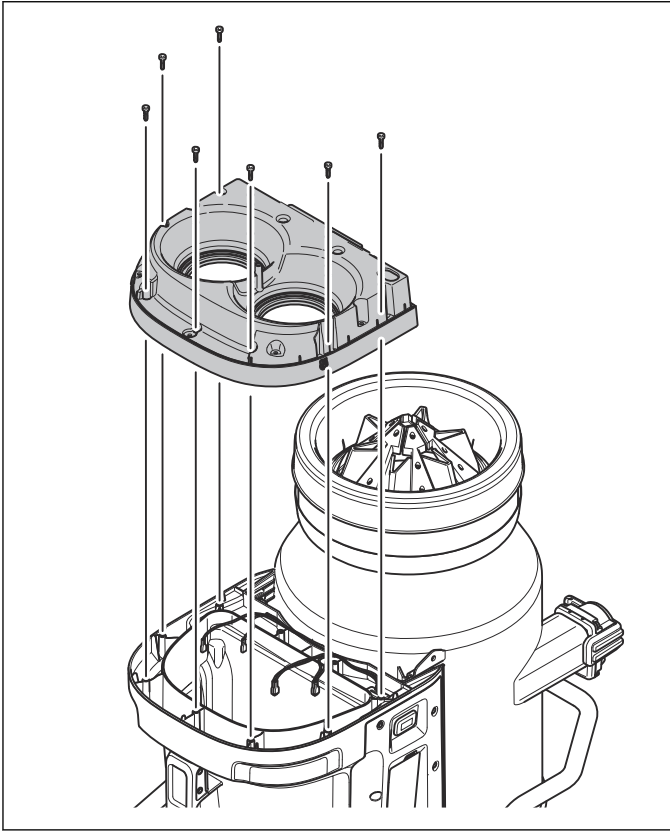
1. Remove the motor. Refer to *To disassemble and assemble the motor housing on page 25*.
2. Remove the screws and the brush holders.



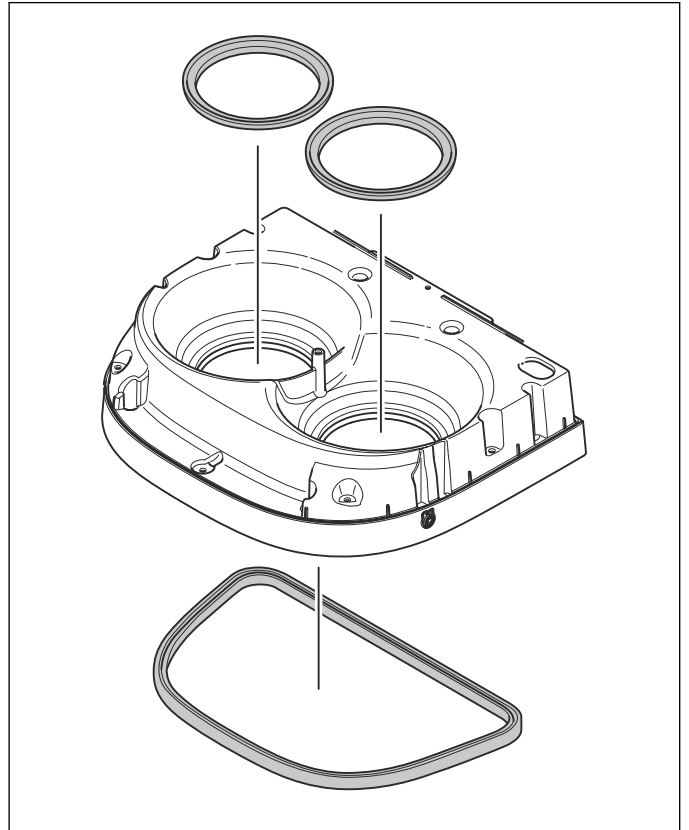
3. Install the new brush holders in the opposite sequence.
4. Assemble the motor housing in the opposite sequence. Refer to *To disassemble and assemble the motor housing on page 25*.

7.9.3 To replace the gaskets in the motor housing

1. Remove the chassis. Refer to *To remove and install the chassis on page 21*.
2. Disassemble the motor housing. Refer to *To disassemble and assemble the motor housing on page 25*.
3. Remove the 9 screws and the motor holder.



4. Remove the gaskets from the motor holder.



5. Examine the gaskets for wear and damage. Replace the gaskets if it is necessary.
6. Install the motor holder and the 9 screws.
7. Assemble the motor housing. Refer to *To disassemble and assemble the motor housing on page 25*.
8. Install the chassis. Refer to *To remove and install the chassis on page 21*.

8 Troubleshooting

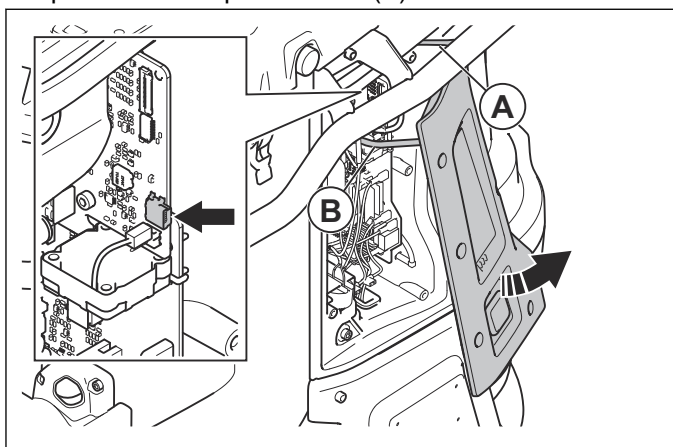
8.1 To connect the product to Husqvarna Service Hub (HSH)



CAUTION: The power cord must be disconnected from the power source when you do this procedure.

Note: It can be necessary to install firmware to a new spare part. Make sure that you know the Husqvarna Identification Number (HID) of the new spare parts before you connect the product to Husqvarna Service Hub (HSH). The Husqvarna Identification Number (HID) is found on the spare part.

1. Remove the 6 screws and carefully pull out the control panel. The control panel is attached to the product with a plastic hook (A).



CAUTION: Be careful when you pull the control panel. The ribbon cable (B) and plastic hook can easily become damaged.

2. Start Husqvarna Service Hub (HSH).

3. Connect the product to Husqvarna Service Hub (HSH) with a USB to USB mini B cable.
 - a) Connect the USB cable to a computer that has Husqvarna Service Hub (HSH).
 - b) Connect the USB cable to the product servicing connector on the circuit board.
 - c) Obey the instructions in Husqvarna Service Hub (HSH).



CAUTION: Do not disconnect the USB cable before the update is completed.

8.2 To do troubleshooting of the Husqvarna Service Hub (HSH)

If there is no signal to Husqvarna Service Hub (HSH) when it is connected to the product, do the procedure that follows.

1. Make sure that the connectors on the cables and on the product are clean and not damaged. Replace all damaged parts.
2. Make sure that the cables are connected to the computer. Replace damaged cables.
3. Restart the computer.
4. Install the software again.





8.3 Troubleshooting schedule

Problem	Cause	Solution
The motor stops immediately after start or does not start.	There is no power.	Connect the product to a power supply.
	The power cord is damaged.	Replace the power cord. Refer to <i>To remove and install the power cord on page 19</i> .
	There is a short circuit in the product.	Replace the damaged wires and components.
	The HEPA filters are damaged or not installed.	Replace or install the HEPA filters. Refer to <i>To replace the HEPA filters on page 19</i> .
	The voltage in the power supply is too high.	Make sure that correct power supply is used.
	The ambient temperature is too high.	Make sure that the ambient temperature is in the specified range when you use the product.
	The fan is broken or disconnected.	Replace or connect the fan.
The motor is on but there is no suction.	The dust extraction hose is not installed correctly.	Make sure that the dust extraction hose is installed correctly.
	The dust extraction hose is blocked.	Clean the dust extraction hose.
	There is no Longopac bag.	Install a Longopac bag.
	The Longopac is not closed with a cable tie.	Close the Longopac with a cable tie.
The suction is not sufficient.	The voltage in the power supply is too high.	Make sure that correct power supply is used.
	There is a hole in the dust extraction hose.	Replace the dust extraction hose.
	The prefilter is clogged.	Clean the prefilter. Replace the prefilter if it is necessary. Refer to <i>To remove and install the prefilter cover on page 17</i> .
	The HEPA filters are clogged.	Replace the HEPA filters. Refer to <i>To replace the HEPA filters on page 19</i> .
	The top cover is not closed.	Close the top cover fully.
	The seals are worn or damaged.	Replace the seals.
Dust releases into the air from the motor.	The filters are incorrectly installed or damaged.	Install the filters correctly. Replace damaged filters.
Unusual noise comes from the product.	N/A	Examine where the unusual noise comes from. Disassemble necessary parts and repair, or replace, parts if it is necessary.

8.4 Warnings on the control panel



CAUTION: Do not operate the product if the red light comes on.

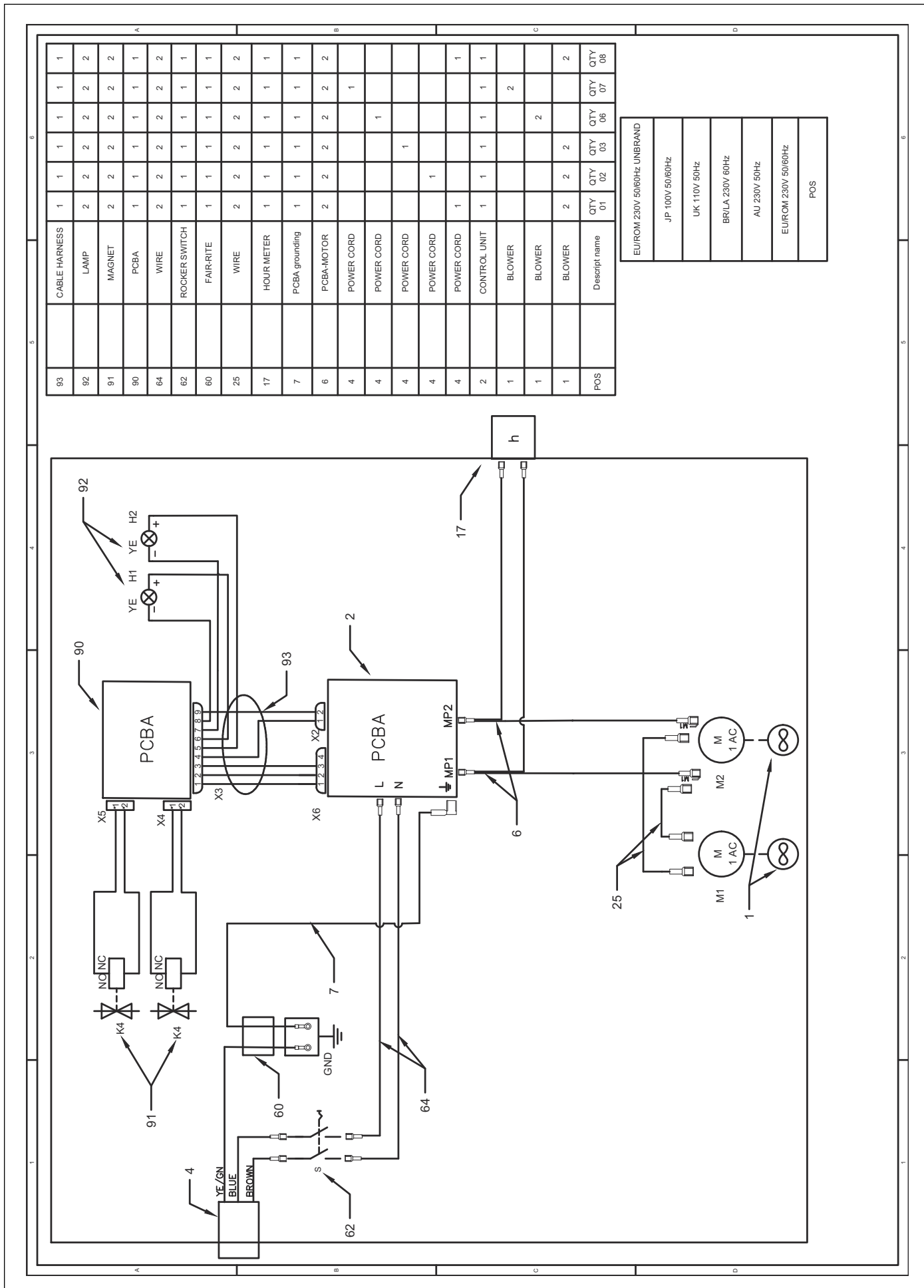
Symbol	Signal	Cause	Solution
	Buzzer signal and the red light comes on.	The prefilter is clogged.	Do a filter purge procedure.
		The incorrect hose is attached or selected in the control panel.	Attach the correct hose or select the correct hose dimension on control panel.
		The hose is damaged or compressed.	Replace the hose.
		The hose is clogged.	Clean the hose and remove the blockage.
	The red light flashes.	The primary vacuum tube is disconnected.	Do a check of the connection of the primary vacuum tube.
	The red light comes on.	The HEPA filters are missing, full or damaged.	Do a check of the HEPA filters, replace the HEPA filters if it is necessary. Refer to <i>To replace the HEPA filters on page 19.</i>
		A motor is damaged.	Replace the damaged motor. Refer to <i>To disassemble and assemble the motor housing on page 25.</i>
	The red light comes on.	The control unit is damaged.	Replace the control unit.
		The ambient temperature is too high.	Make sure that the ambient temperature is in specified range when you use the product.
		Warning.	Look at the operation record of your Husqvarna Fleet Services™ app or speak to an approved service agent.
	The yellow light comes on.	The HEPA filters are almost full.	Replace the HEPA filters if it is necessary. Refer to <i>To replace the HEPA filters on page 19.</i>
	The red light comes on.	The HEPA filters are full.	Replace the HEPA filters. Refer to <i>To replace the HEPA filters on page 19.</i>

8.5 Error codes

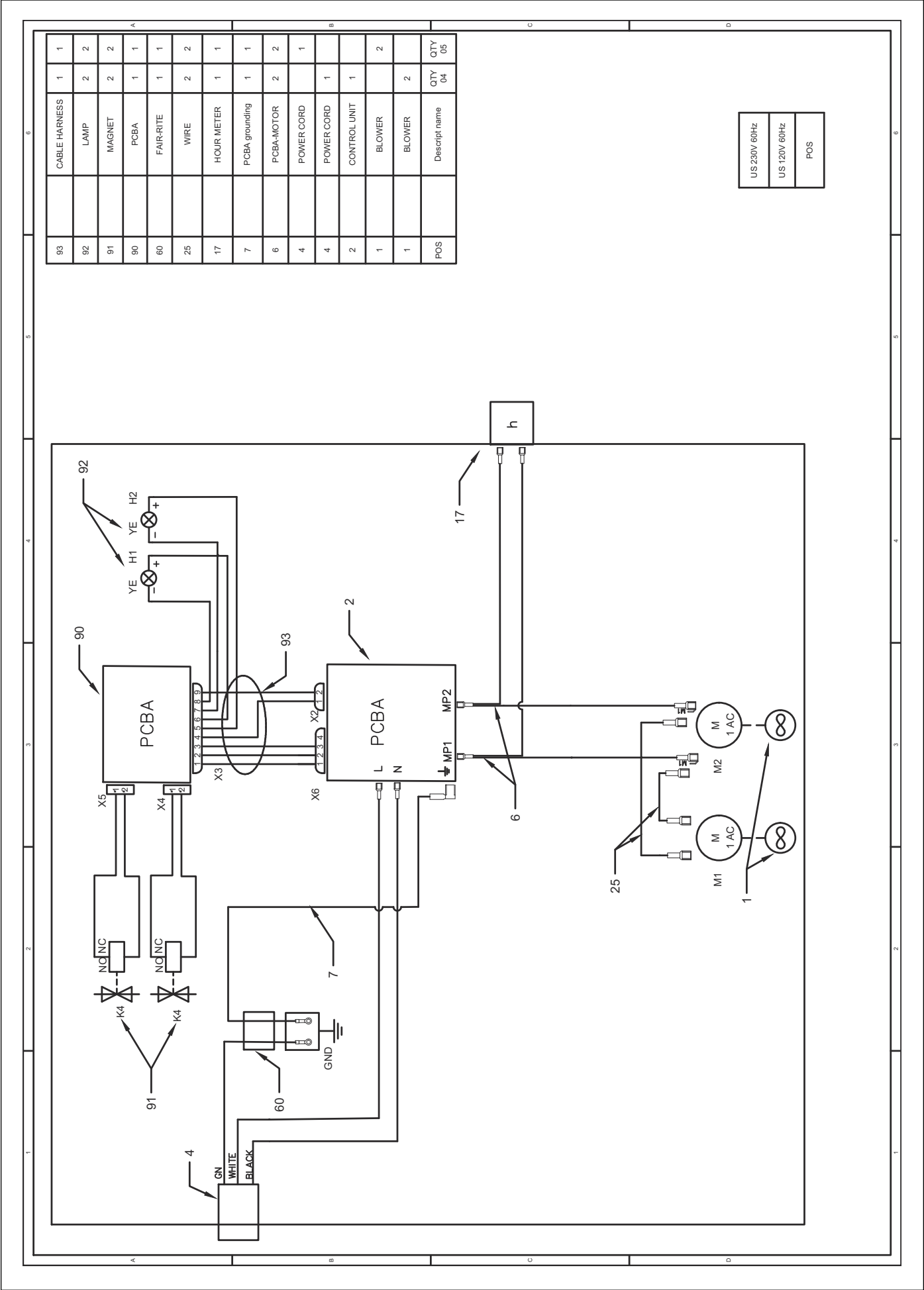
Error code	Error	Description	Probable cause(s)	Action(s)
2	HEPA filter missing.	Product shuts down/does not start. + Warning light on HMI. + HEPA symbol on HMI.	HEPA filter is missing or damaged.	Assemble or replace the HEPA filter.
3	Low supply voltage.	Low performance (low air flow/vacuum).	Too low voltage in grid/power supply.	Make sure correct grid/power supply is used.
4	High supply voltage.	Product shuts down/does not start. + Warning diode light on HMI.	Too high voltage in grid/power supply.	Make sure correct grid/power supply is used.
			Wrong battery used.	Use correct battery.
5	Main Pressure Sensor Error.	Prefilter light flashes red.	Sensor tube is disconnected or blocked.	Do a check of the sensor tube. Clean the sensor tube if it is necessary.
			Control unit is damaged.	Replace the control unit.
6	PCBA temperature too high.	Product shuts down/ does not start. + Warning diode light on HMI.	Too high ambient temperature.	Do not use the product outside specified temperature range.
7	Fan malfunction.	Product shuts down/ does not start. + Warning diode light on HMI.	Fan is damaged or disconnected.	Replace the fan.
			Control unit is damaged.	Replace the control unit.
9	One wire communication not detected.	Product shuts down/ does not start. + Warning diode light on HMI.	Cable disconnected or damaged.	Do a check of the wiring.

9 Diagrams

9.1 Wiring diagram, EU



9.2 Wiring diagram, US



10 Technical data

10.1 Technical data

Data	DE 130 H [UK]	DE 130 H [EU/ROW]	DE 130 H [AU]	DE 130 H [BR]	DE 130 H [JP]
Rated Voltage, V	110	220–240			100
Phase	1				
Frequency, Hz	50–60				
Maximum power, W	2400	3000			1500
Maximum current, A	20	13			15
Maximum airflow turbine, m³/h / cfm	470/277	490/288			380/224
Maximum airflow extractor, m³/h / cfm	410/241	415/244			320/188
Maximum vacuum turbine, mbar/psi	245/3.6	275/4.0			170/2.5
Dust extraction hose length, m	10				
Dust extraction hose diameter mm	63				
Pre-filter area, m²	2.4				
Filter efficiency HEPA	HEPA 13				
Total HEPA area, m²	2.4				
Dust collection system, type	Longopac				
Filter cleaning mechanism	Auto pulse				
Weight, kg	47				
Sound power level L _{WA} measured, dB(A) ¹	94.8				
Sound pressure level L _{PA} at the operators ear, dB(A) ²	78.5				
Vibration level a _h , m/s ²³	≤2.5				
Protection class	IP55				
Mains connection (type)	2P+G 4H 32A	Schuko CEE 7/7	AS/NZS 3112	NBR 14136	JIS 8303 YP 12P

¹ Noise emissions in the environment measured as sound power (LWA) in conformity with IEC/EN 60335-2-69. Uncertainty Kwa 2dB.

² Noise pressure level according to IEC/EN 60335-2-69. Uncertainty KPA 2dB.

³ Vibration level according to IEC/EN 60335-2-69. Reported data for vibration level has a typical statistical dispersion (standard deviation) of 1 m/s².

10.2 Technical data

Data	DE 130 H 120V	DE 130 H 230V
Rated Voltage, V	120	220–240
Phase	1	
Frequency, Hz	50–60	
Maximum power, W	2400	3000
Maximum current, A	20	13
Maximum airflow turbine, m ³ /h / cfm	470/277	490/288
Maximum airflow extractor, m ³ /h / cfm	380/224	415/244
Maximum vacuum turbine, mbar/psi	245/3.6	275/4.0
Dust extraction hose length, ft.	32.8	
Dust extraction hose diameter, in.	2.5	
Pre-filter area, sq.ft.	25.8	
Filter efficiency HEPA	HEPA 13	
Total HEPA area, sq.ft.	25.4	
Dust collection system, type	Longopac	
Filter cleaning mechanism	Auto pulse	
Weight, lbs	103.4	
Sound power level L _{WA} measured, dB(A) ⁴	94.8	
Sound pressure level L _{PA} at the operators ear, dB(A) ⁵	78.5	
Vibration level a _n , m/s ²⁶	≤2.5	
Protection class	IP55	
Mains connection (type)	NEMA L6-20	

⁴ Noise emissions in the environment measured as sound power (LWA) in conformity with IEC/EN 60335-2-69. Uncertainty Kwa 2dB.

⁵ Noise pressure level according to IEC/EN 60335-2-69. Uncertainty KPA 2dB.

⁶ Vibration level according to IEC/EN 60335-2-69. Reported data for vibration level has a typical statistical dispersion (standard deviation) of 1 m/s².



www.husqvarna.com

1143800-26

Rev. B

2024-07-05