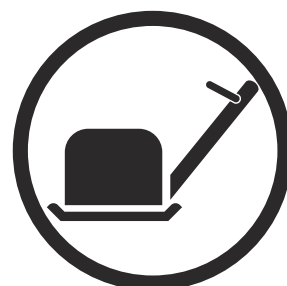


Workshop manual

LFe 60



English

Contents

1 Introduction

1.1 Document description.....	3
1.2 Target group.....	3
1.3 Revisions.....	3
1.4 Safety.....	3
1.5 Servicing tools.....	3

2 Safety

2.1 Safety definitions.....	4
2.2 General safety instructions.....	4
2.3 Special safety instructions.....	4
2.4 Symbols on the product.....	4

3 Servicing data

3.1 Tightening torques.....	5
-----------------------------	---

4 Servicing tools

5 Product overview for repair and servicing

5.1 Product overview	11
----------------------------	----

6 Repair instructions

6.1 To clean and examine the product parts.....	12
6.2 To remove and install the water tank.....	12
6.3 To remove and install the V-belt cover.....	12
6.4 To remove and install the V-belt.....	13
6.5 To remove the V-belt housing.....	13
6.6 To install the V-belt housing.....	14
6.7 To remove and install the horizontal vibration damping units.....	15
6.8 To remove and install the power unit.....	16
6.9 To disassemble the HMI.....	17
6.10 To remove and install the cable harness.....	18
6.11 To disassemble the eccentric element.....	19
6.12 To assemble the eccentric element.....	21
6.13 To remove and install the mount rubbers.....	23

7 Technical data

1 Introduction

1.1 Document description

This manual gives a full description of how to do maintenance and repair on the product. It also gives safety instructions that the personnel must obey.

1.2 Target group

This manual is for personnel with a general knowledge of how to do repair and do servicing. All personnel that do repair or do servicing on the product must read and understand the manual.

1.3 Revisions

Changes to the product can cause changes to the maintenance work and spare parts. Separate information is sent out for each change.

Read the manual together with all received information about changes to maintenance and spare parts for the product.

1.4 Safety



WARNING: All personnel that repair or do servicing on the product must read and understand the safety instructions in this workshop manual.

1.5 Servicing tools

The manual gives information about necessary servicing tools. Always use original tools from Husqvarna.

2 Safety

2.1 Safety definitions

Warnings, cautions and notes are used to point out specially important parts of the manual.



WARNING: Used if there is a risk of injury or death for the operator or bystanders if the instructions in the manual are not obeyed.



CAUTION: Used if there is a risk of damage to the product, other materials or the adjacent area if the instructions in the manual are not obeyed.

Note: Used to give more information that is necessary in a given situation.

2.2 General safety instructions



WARNING: Read the warning instructions that follow before you use the product.



WARNING: Apply a new warning label if a warning symbol on the product is damaged or missing.

The service center that repairs the product must have safety devices that obey local regulations. Warnings and cautions are used to point out specially important parts of the workshop manual.

2.3 Special safety instructions

- When you use compressed air, do not point the airflow in the direction of your body. Air can go into the blood circulation and kill you.
- Use eye protection when you do work on springs that have tension.
- Do not use accessories that are not approved by the manufacturer. Do not do changes that are not approved by the manufacturer. This can cause injury or death to the operator or other persons.
- Always use original spare parts and accessories.
- Use approved hearing protection. Noise from the product can result in permanent hearing loss.

2.4 Symbols on the product



WARNING: This product can be dangerous and cause serious injury or death to the operator or others. Be careful and use the product correctly.



Read the manual carefully and make sure that you understand the instructions before you use the product.



Use heavy-duty slip-resistant boots.



Wear approved hearing protection.



To lift the product, attach lifting equipment to the lift point on the product.



Hot surface. Keep all parts of your body away.



If the product features wireless technology. The symbol will be marked on the product name label.



The product is not domestic waste. Recycle it at an approved disposal location for electrical and electronic equipment.



This product is in compliance with applicable EC directives.

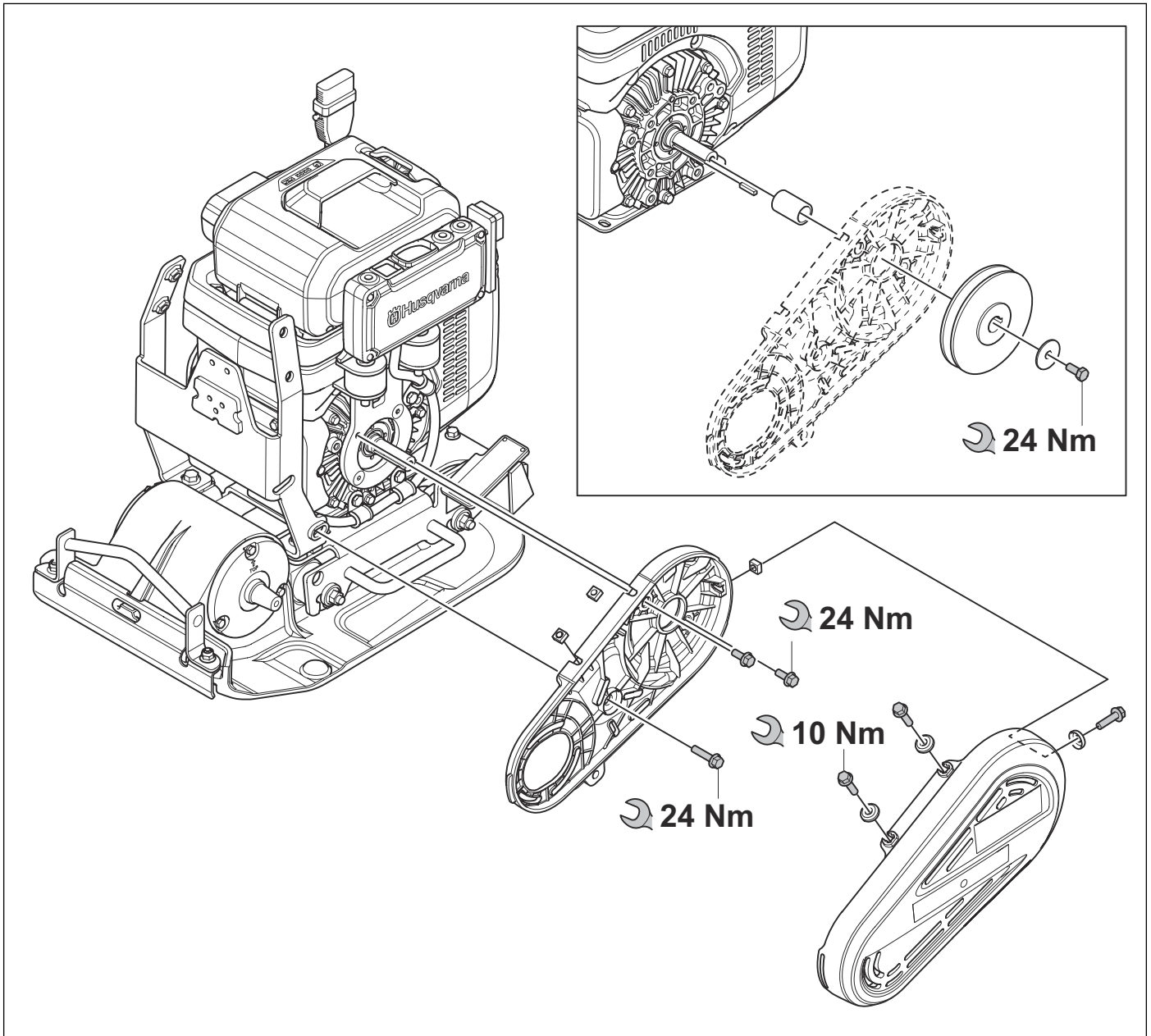


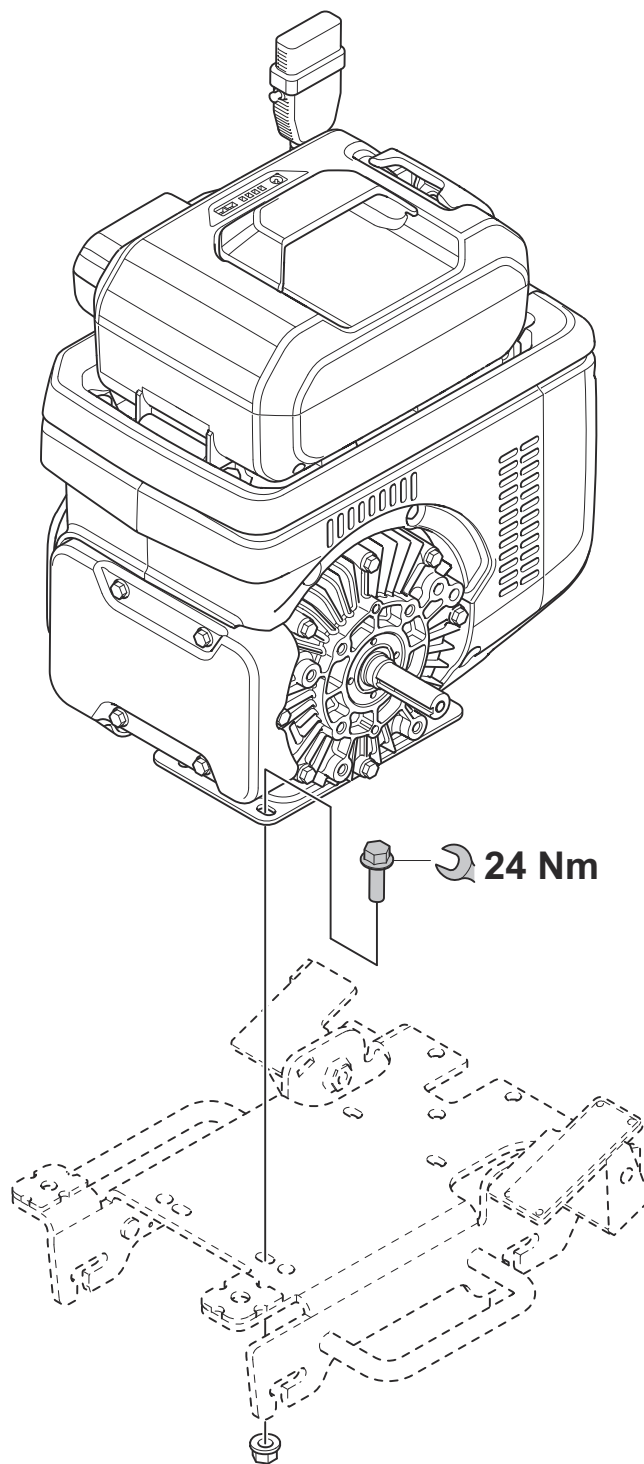
This product conforms to the applicable UK regulations.

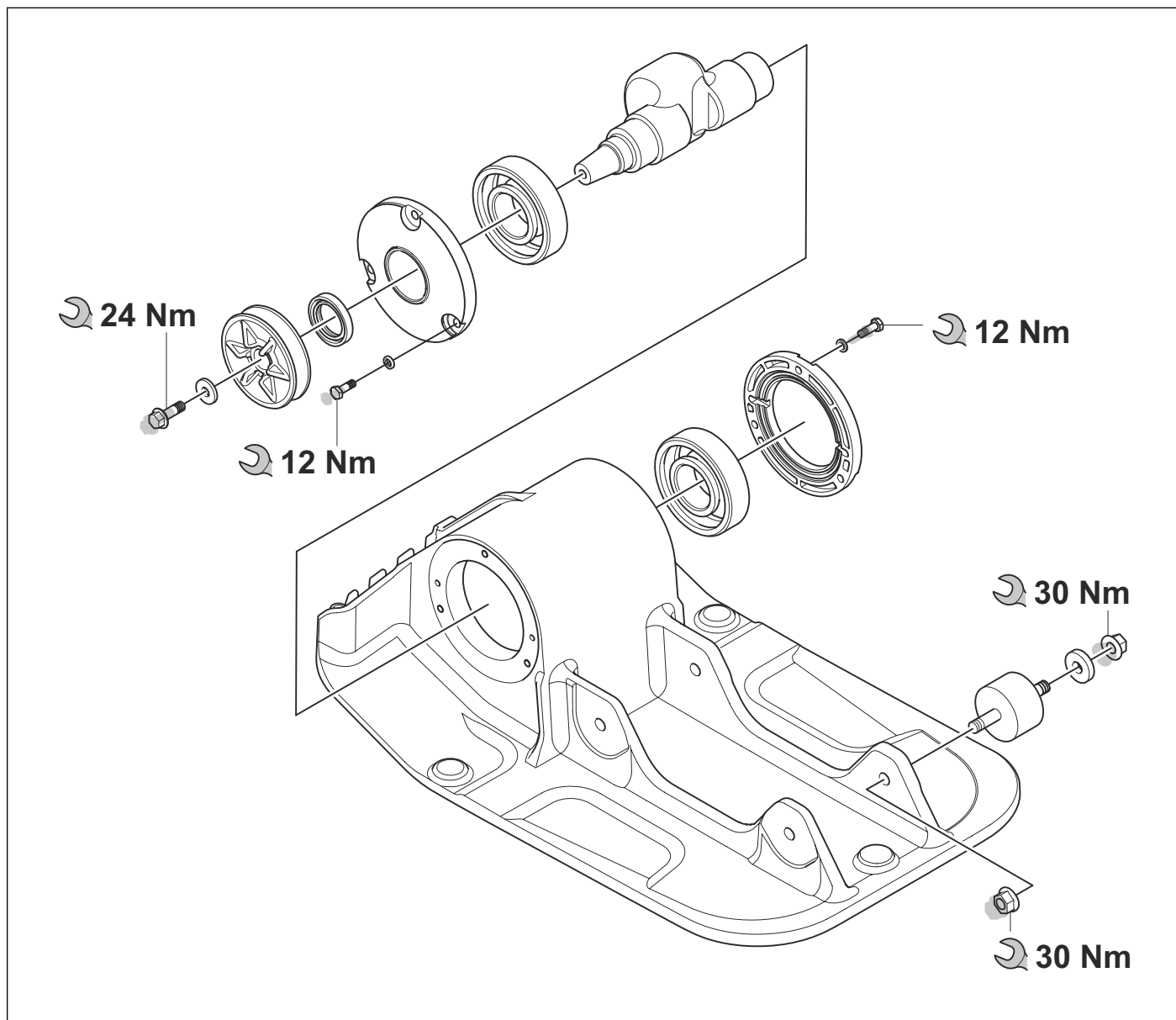
Note: Other symbols/decals on the product refer to special certification requirements for some markets.

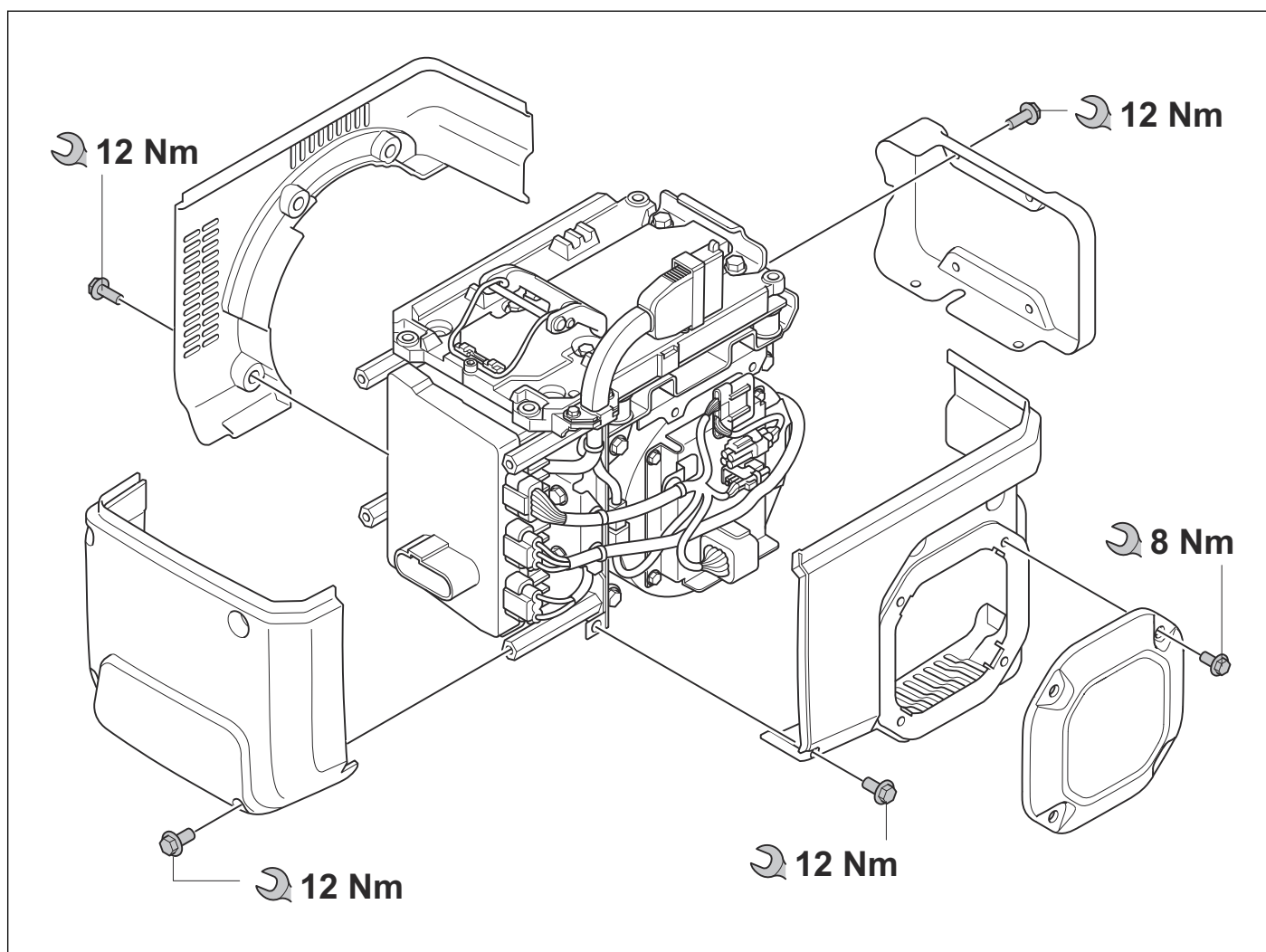
3 Servicing data

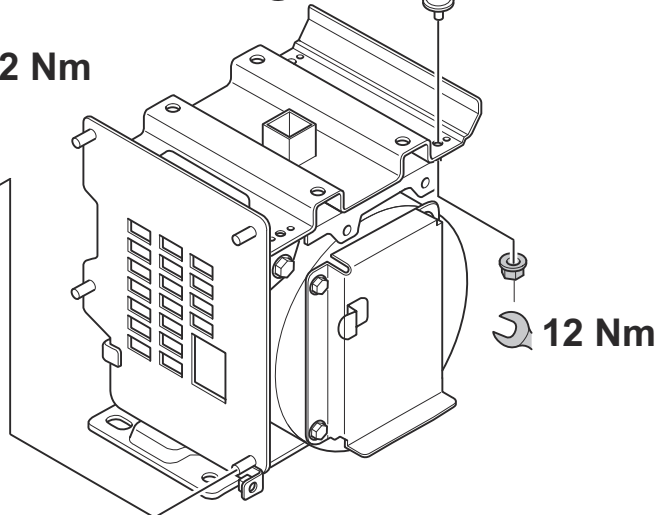
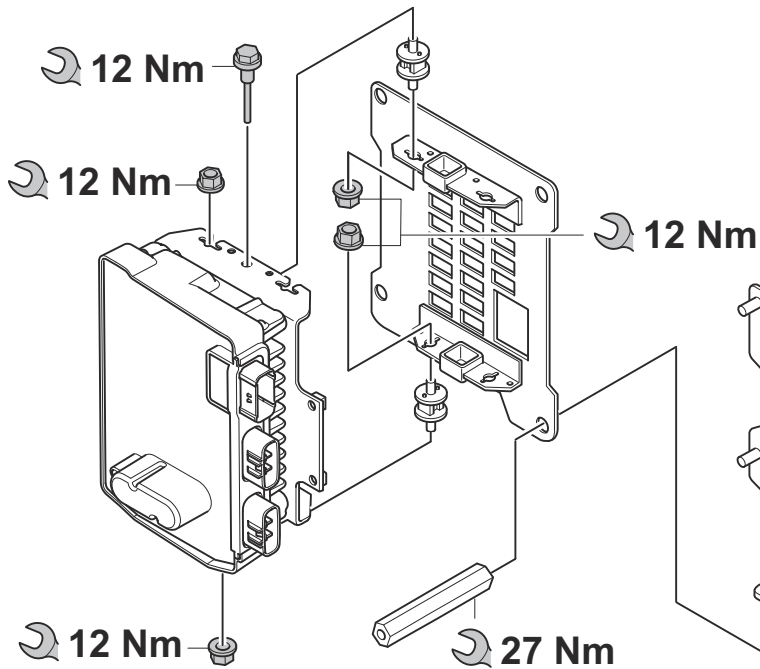
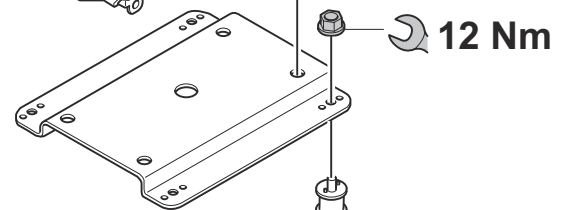
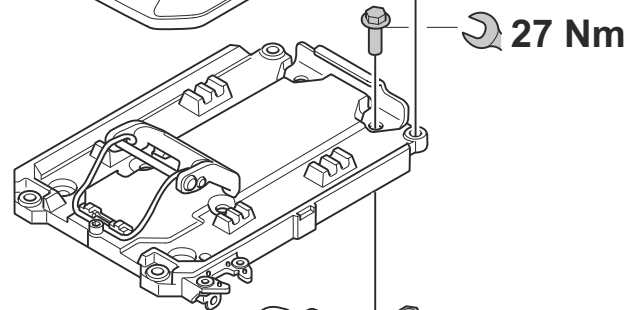
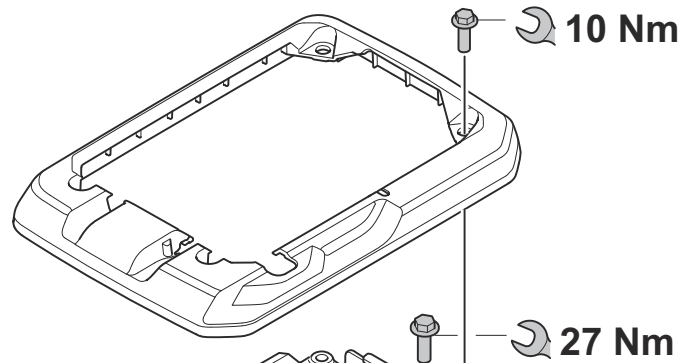
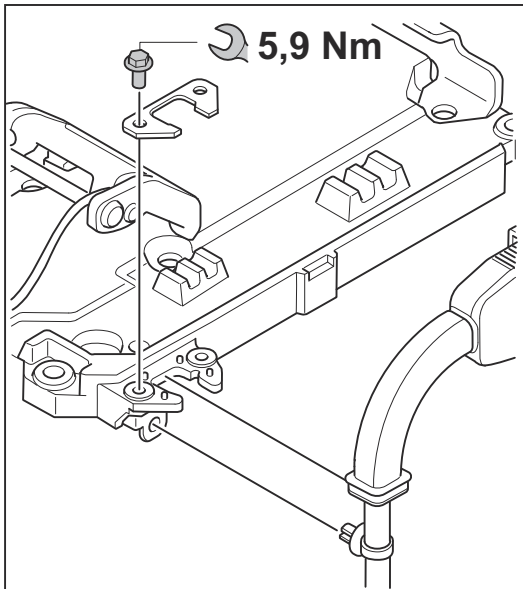
3.1 Tightening torques



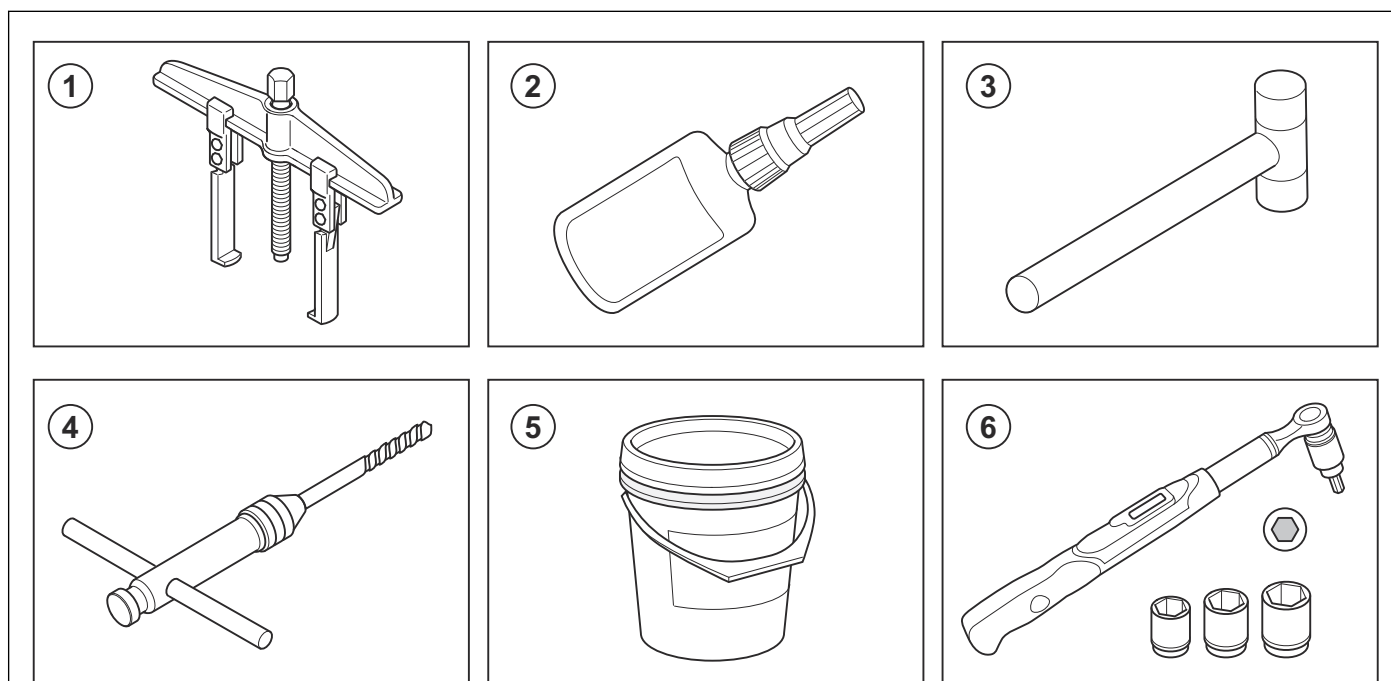








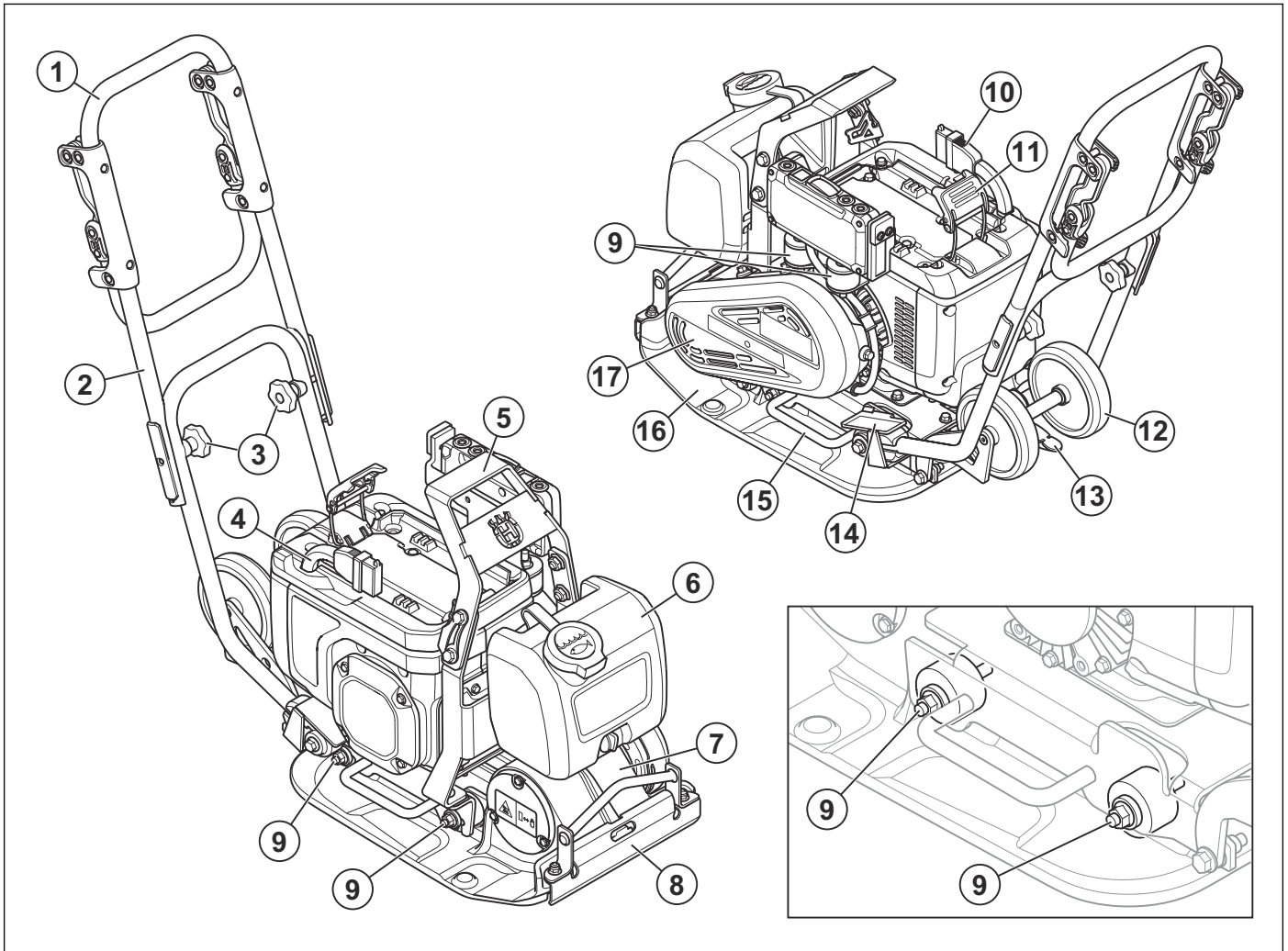
4 Servicing tools



Item	Description	Use
1	Bearing removal tool	To remove the inner bearing races.
2	Loctite 243 and Loctite 5188	To attach the screws and nuts.
3	Rubber mallet	General
4	Thread tap	To clean threaded holes.
5	Anti fretting grease	To lubricate the bearing covers of the eccentric element.
6	Wrench	General

5 Product overview for repair and servicing

5.1 Product overview



1. Handle
2. Upper handle
3. Handle knobs
4. Battery cable
5. Lift point
6. Water tank
7. Eccentric element
8. Water supply
9. Vibration damping units
10. Battery cable
11. Battery fastener lever
12. Transportation wheel
13. Transportation wheel lever
14. Typer plate
15. Lifting handle
16. Bottom plate
17. V-belt cover

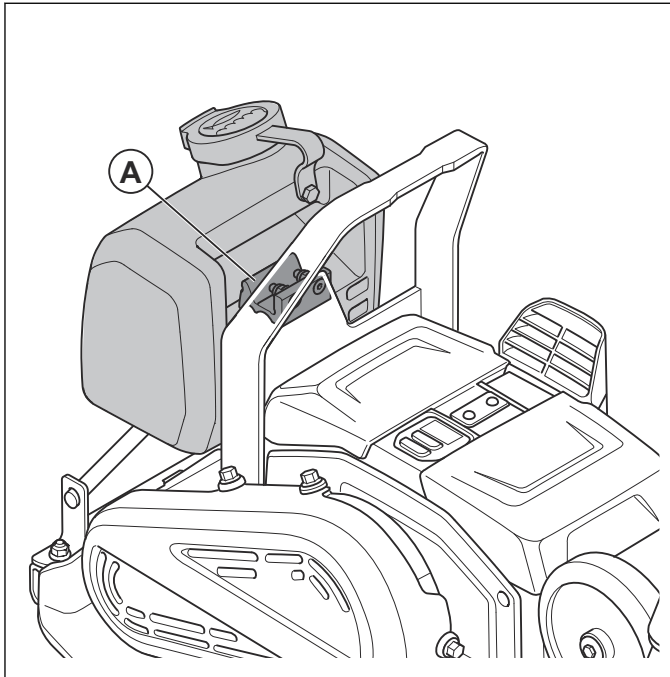
6 Repair instructions

6.1 To clean and examine the product parts

- Clean and examine all parts fully. You find more instructions in the chapter for each part if special tools or procedures are necessary.
- Replace damaged parts.
- Always use original spare parts.

6.2 To remove and install the water tank

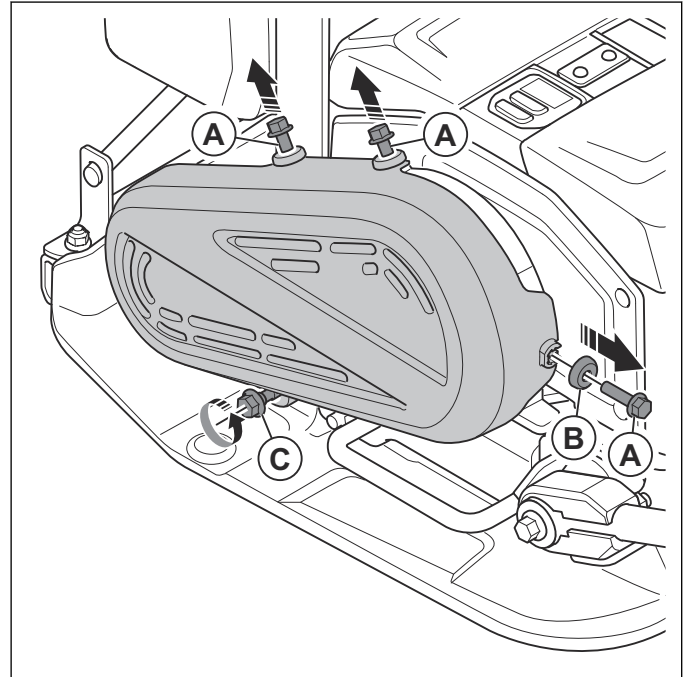
1. Empty the water tank.
2. Lift the front part of the rubber lock (A) and lift the water tank from the product.



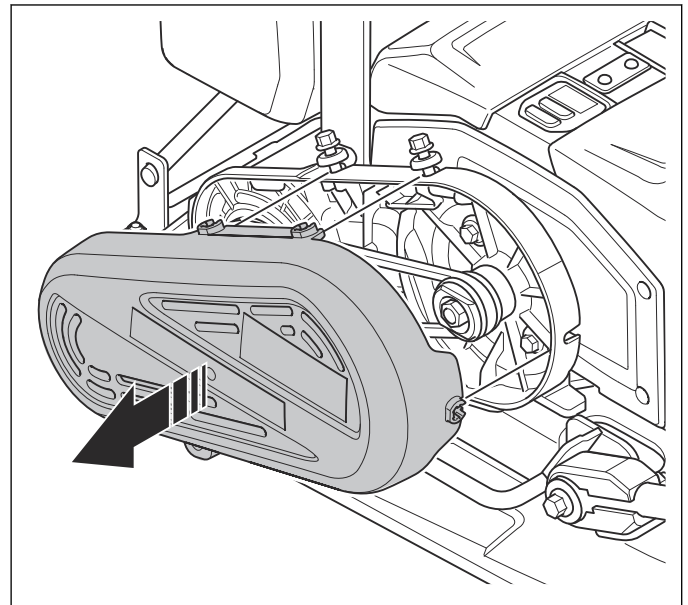
3. Install in the opposite sequence.

6.3 To remove and install the V-belt cover

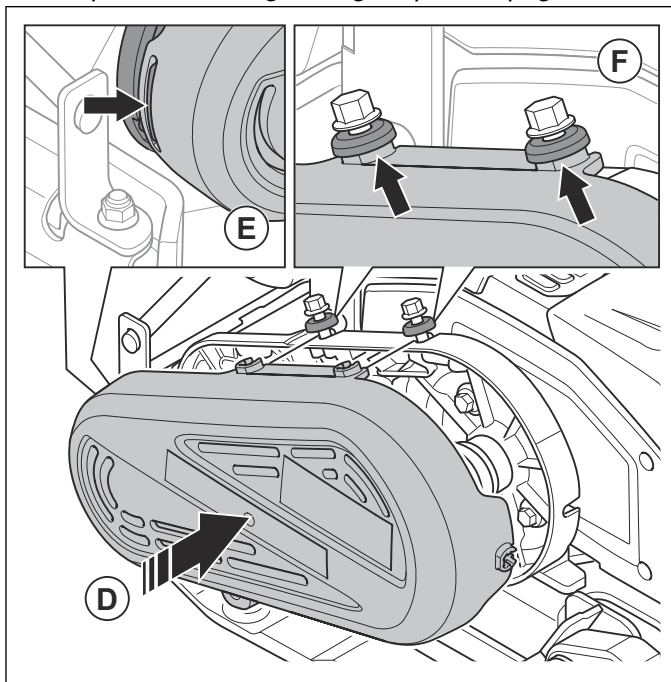
1. Remove the 3 bolts (A) and the washer (B).



2. Loosen the bolt (C).
3. Remove the V-belt cover.



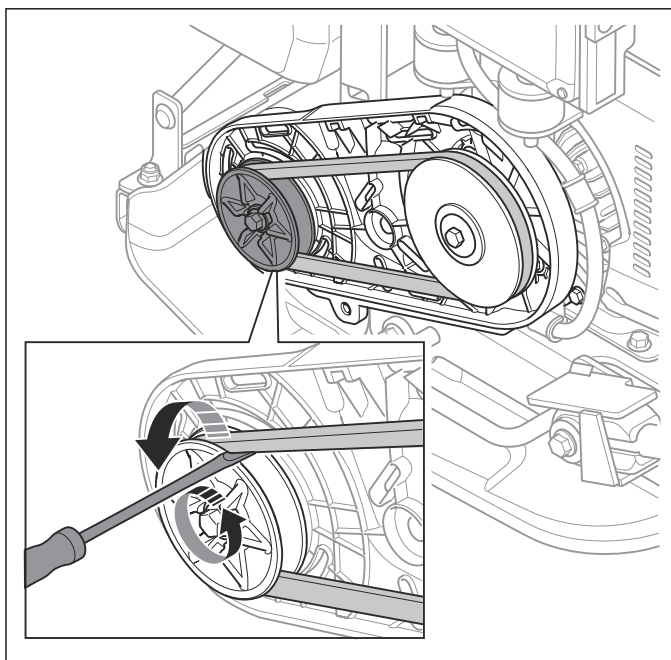
4. Install the V-belt cover (D) in the opposite sequence. Make sure that the V-belt cover is correctly aligned (E) before you tighten the bolts (F) to the correct torque. Refer to *Tightening torques on page 5*.



CAUTION: Do not tighten the screws too much. It can cause damage to the plastic.

6.4 To remove and install the V-belt

1. Remove the V-belt cover. Refer to *To remove and install the V-belt cover on page 12*.
2. Bend with a flat screwdriver to remove the V-belt.

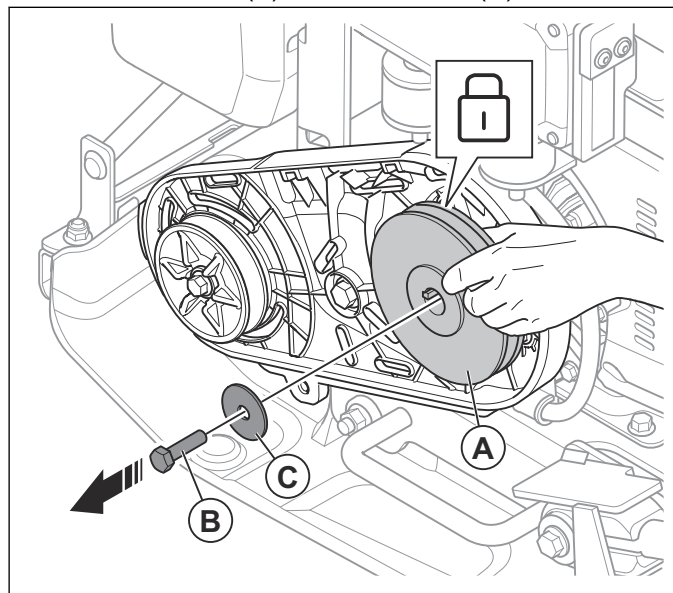


CAUTION: Put the screwdriver on the eccentric shaft pulley. If you put the screwdriver on the drive pulley, you can cause damage to the electric motor.

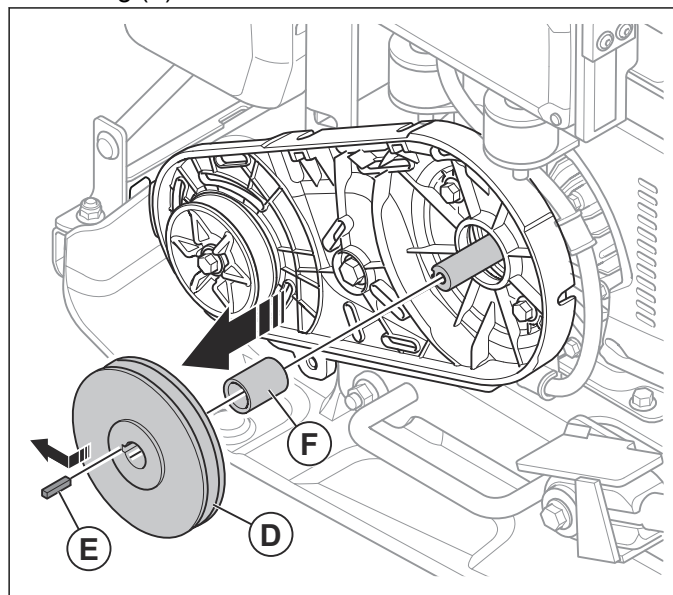
3. Install the V-belt in the opposite sequence.

6.5 To remove the V-belt housing

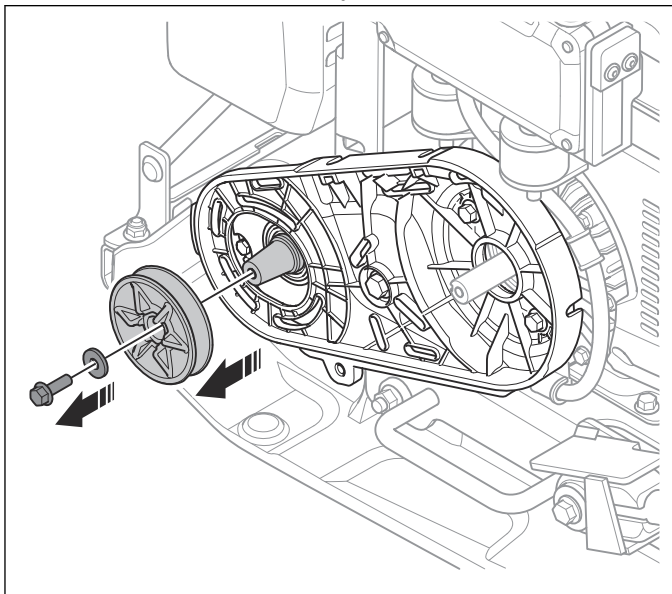
1. Remove the V-belt cover. Refer to *To remove and install the V-belt cover on page 12*.
2. Remove the V-belt. Refer to *To remove and install the V-belt on page 13*.
3. Hold the drive pulley (A) with your hand while you remove the bolt (B) and the washer (C).



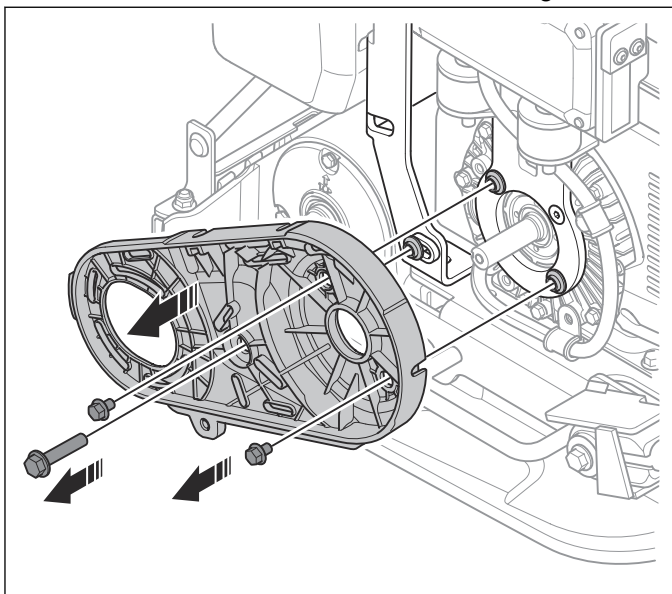
4. Remove the drive pulley (D), the key (E) and the bushing (F).



5. Remove the bolt, the washer and the eccentric shaft pulley. Use a puller if the eccentric shaft pulley cannot be removed easily.

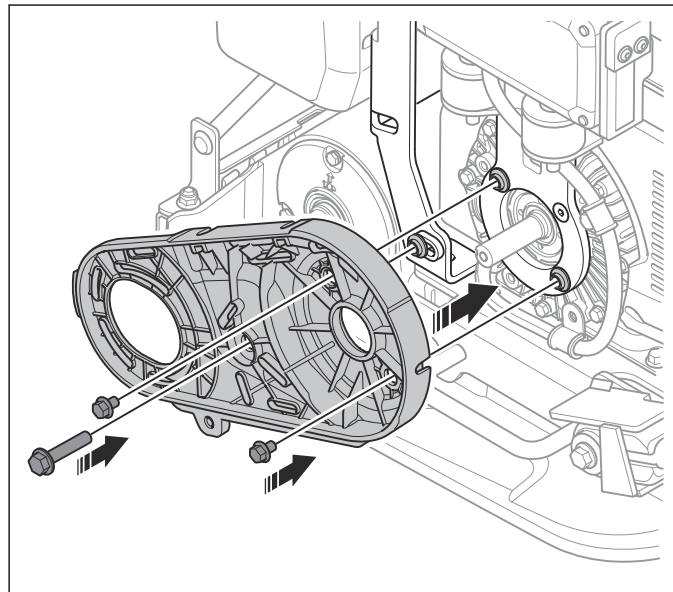


6. Remove the 3 bolts and the V-belt housing.

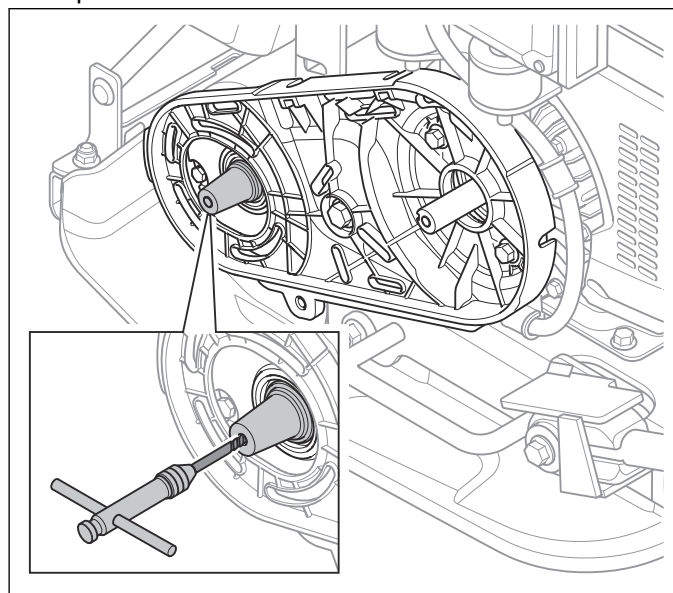


6.6 To install the V-belt housing

1. Install the V-belt housing and the 3 bolts. Tighten the bolts to the correct torque, refer to *Tightening torques on page 5*.

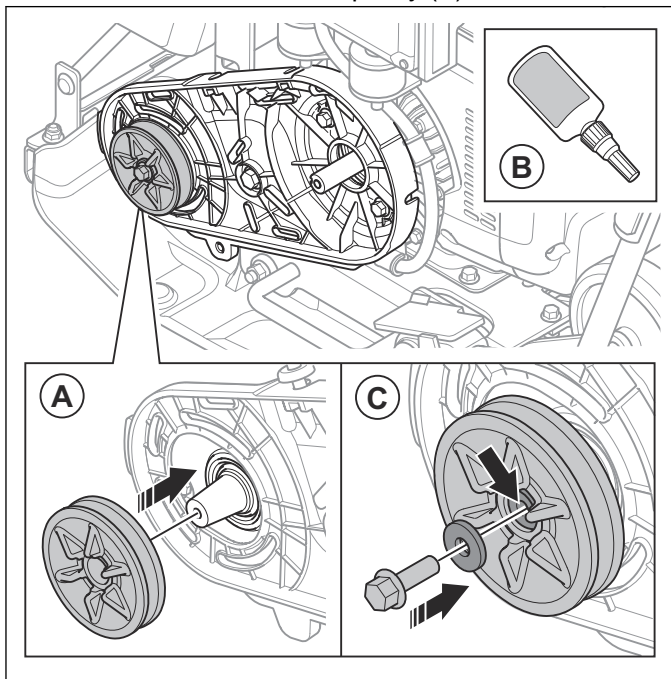


2. Clean the threads in the eccentric shaft with a thread tap.

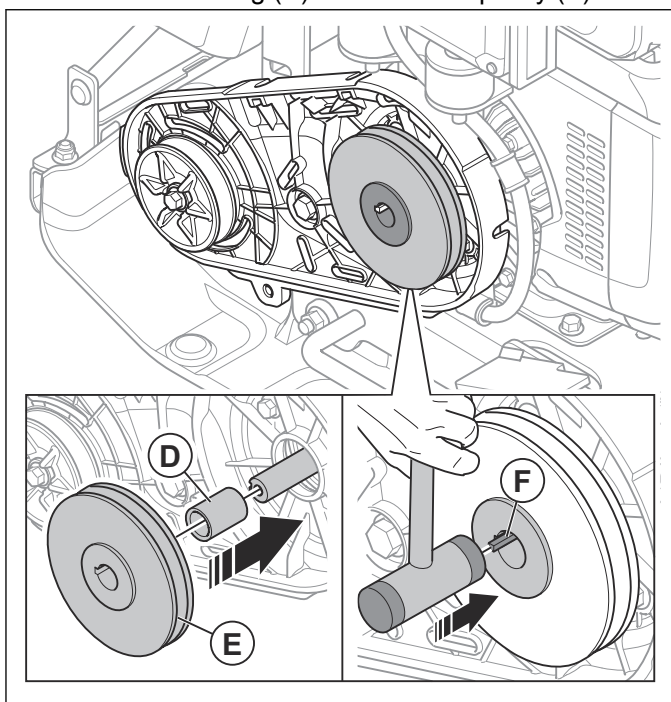


CAUTION: Be careful when you use the thread tap. The thread tap can cause damage to the threads if you do not use it correctly.

3. Install the eccentric shaft pulley (A).

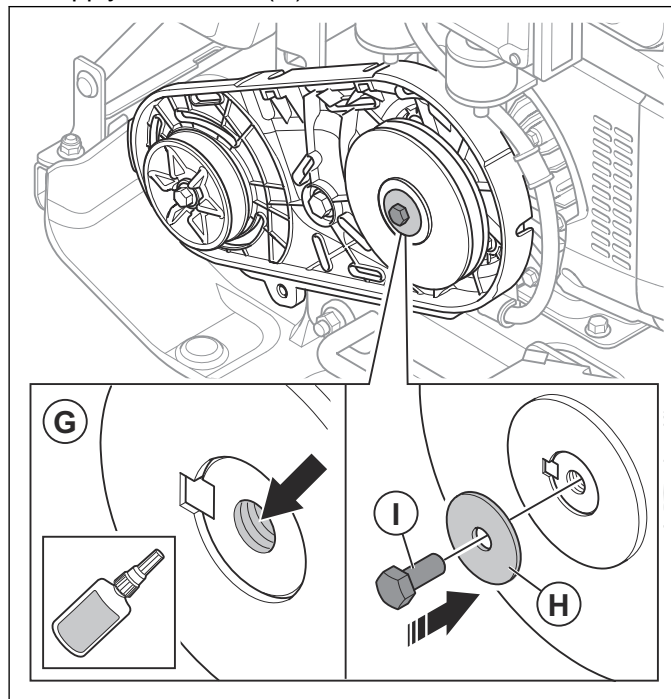


4. Apply Loctite 243 (B) to the hole with threads.
5. Install the washer and the bolt (C). Tighten the bolt to the correct torque, refer to *Tightening torques on page 5*.
6. Install the bushing (D) and the drive pulley (E).



7. Install the key (F) with a rubber mallet.

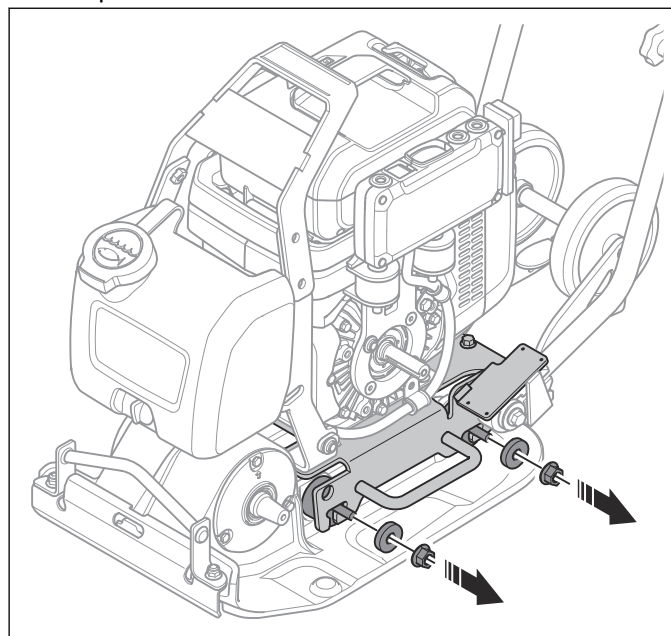
8. Apply Loctite 243 (G) to the threads.



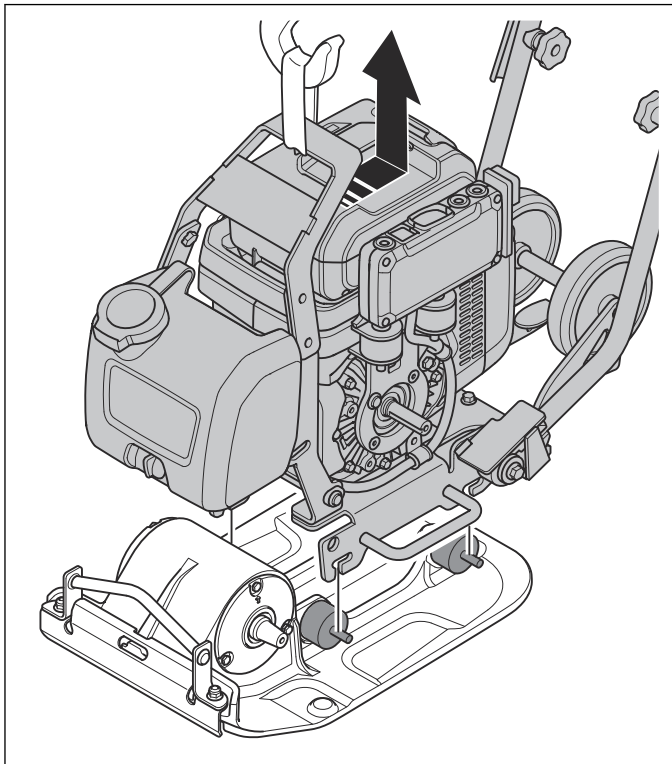
9. Install the washer (H) and the bolt (I). Hold the drive pulley with your hand and tighten the nut to the correct torque, refer to *Tightening torques on page 5*.

6.7 To remove and install the horizontal vibration damping units

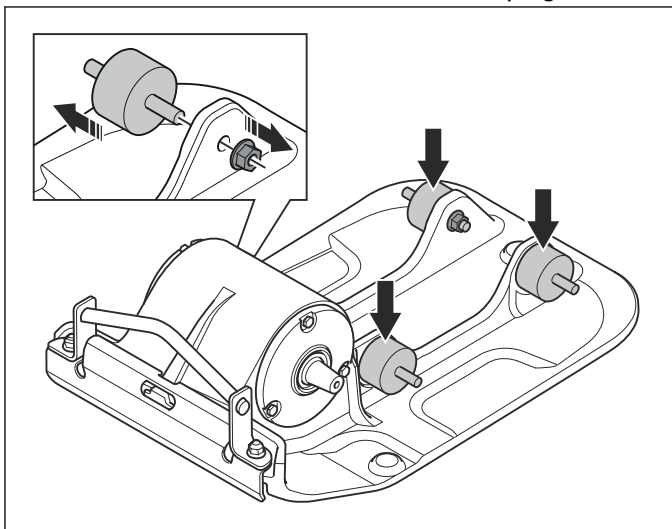
1. Remove the V-belt cover. Refer to *To remove and install the V-belt cover on page 12*.
2. Remove the V-belt. Refer to *To remove and install the V-belt on page 13*.
3. Remove the V-belt housing. Refer to *To remove the V-belt housing on page 13*.
4. Remove the 2 nuts and 2 washers on each side of the product.



5. Attach the lifting equipment to the lifting points on the product.
6. Lift the engine plate from the bottom plate.



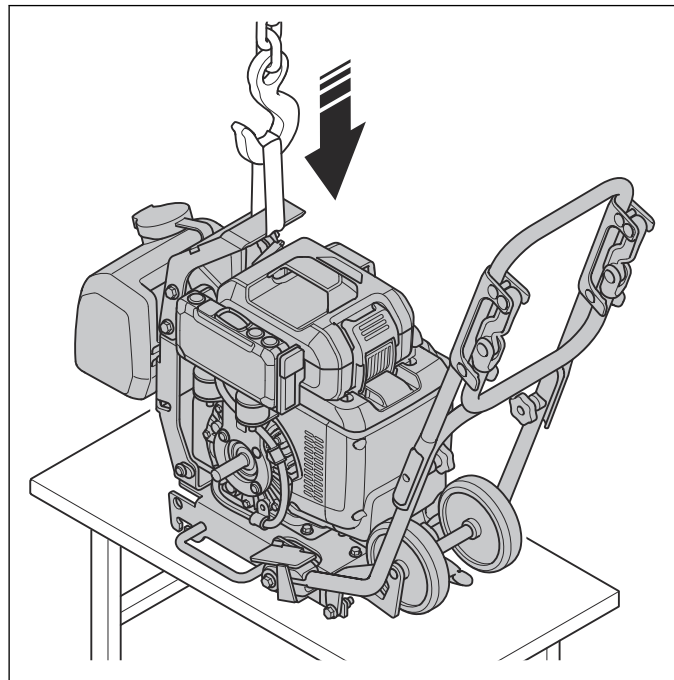
7. Remove the 4 horizontal vibration damping units.



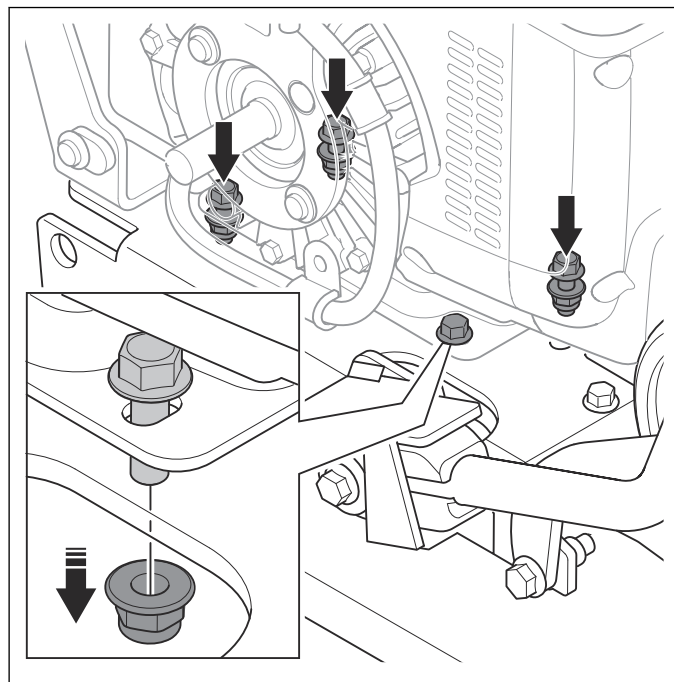
8. Install in the opposite sequence. Apply Loctite 243 to the threads and install the nuts. Tighten the nuts to the correct torque, refer to *Tightening torques* on page 5.

4. Remove the motor plate from the ground plate. Refer to *To remove and install the horizontal vibration damping units* on page 15.

5. Put the product on a work bench.



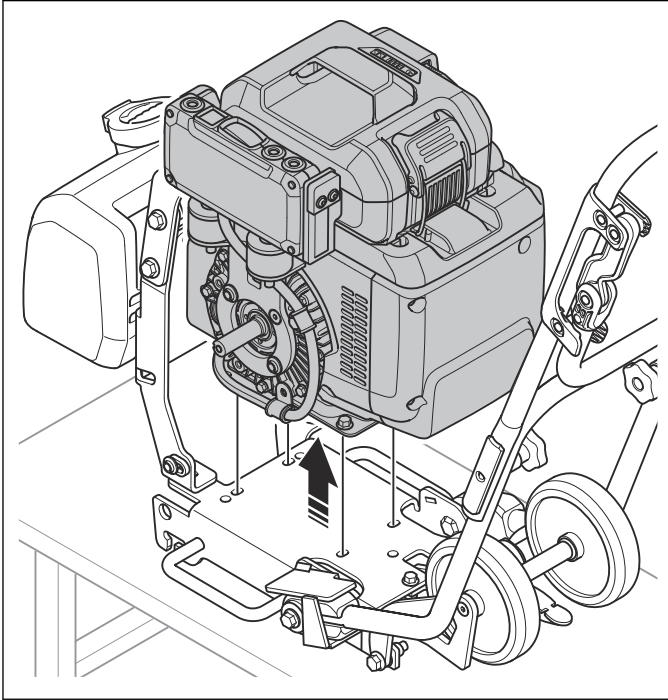
6. Remove the 4 bolts and the 4 lock nuts.



6.8 To remove and install the power unit

1. Remove the V-belt cover. Refer to *To remove and install the V-belt cover* on page 12.
2. Remove the V-belt. Refer to *To remove and install the V-belt* on page 13.
3. Remove the V-belt housing. Refer to *To remove the V-belt housing* on page 13.

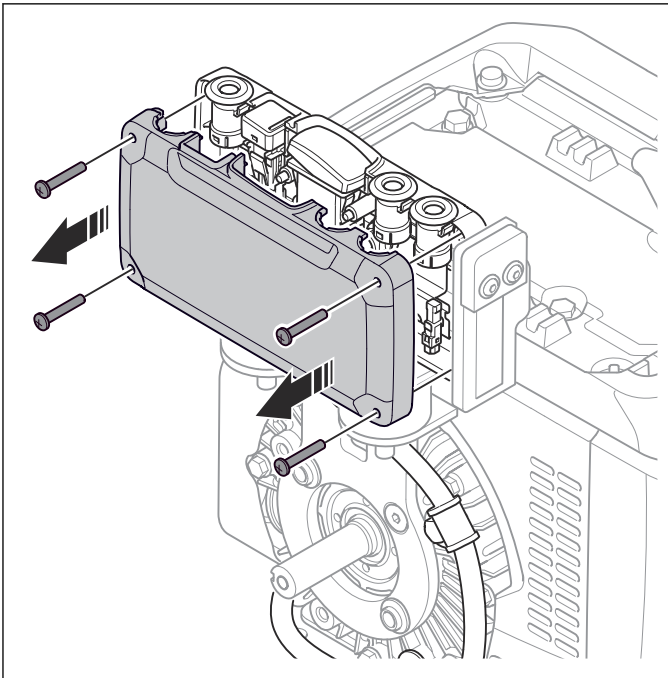
7. Remove the power unit from the motor plate.



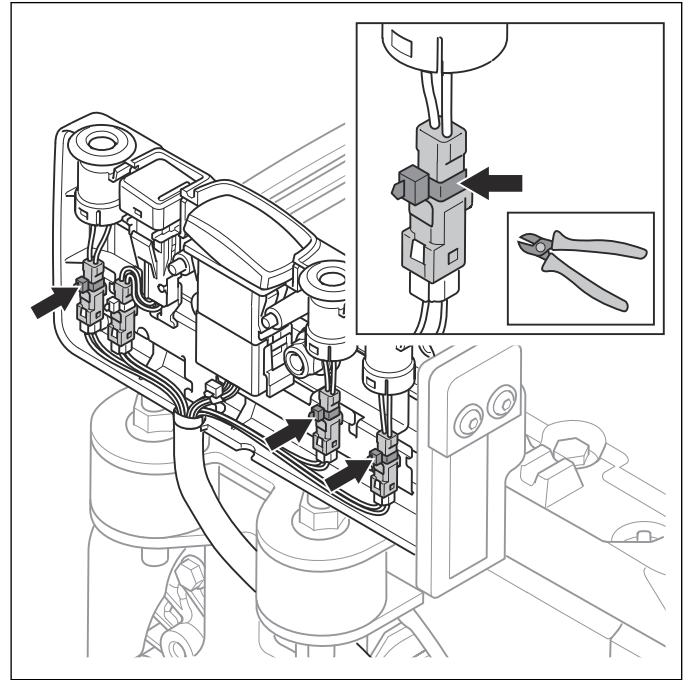
8. Install the power unit in the opposite sequence. Tighten the bolts to the correct torque, refer to *Tightening torques on page 5*.

6.9 To disassemble the HMI

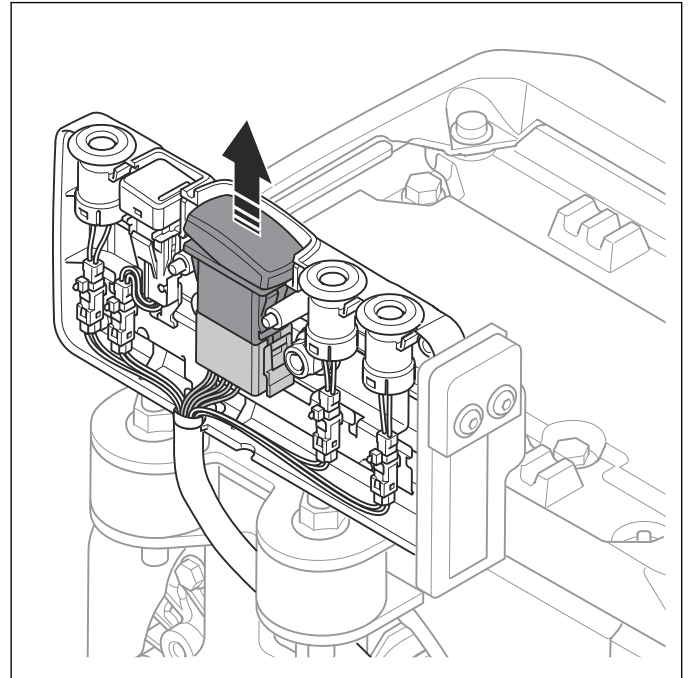
1. Remove the power unit. Refer to *To remove and install the power unit on page 16*.
2. Remove the battery.
3. Remove the 4 screws and the HMI cover.



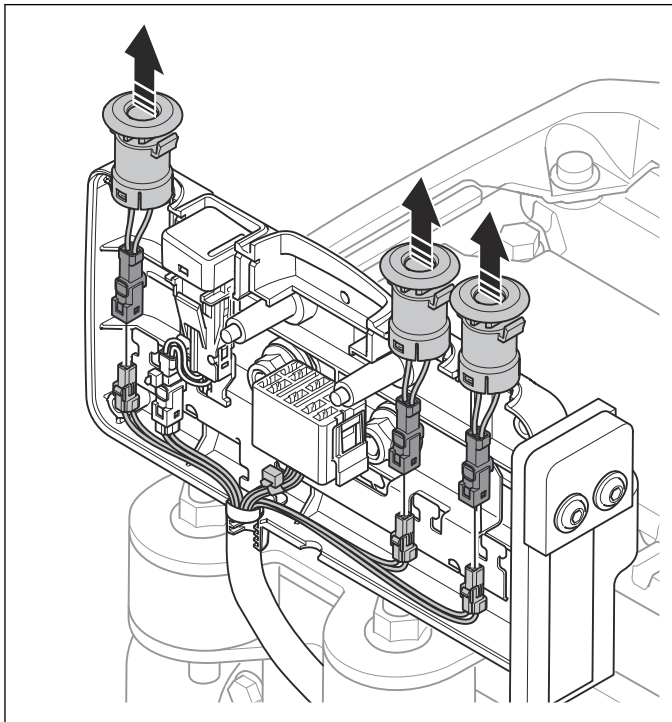
4. Cut the 3 cable ties.



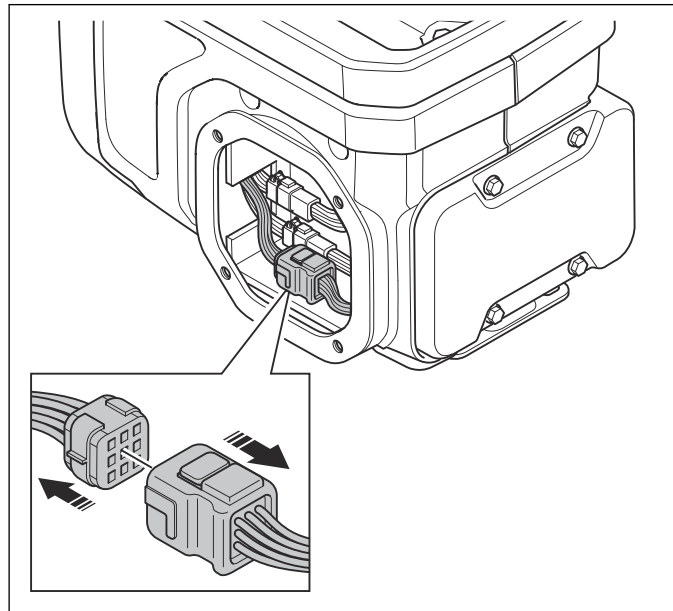
5. Remove the START/STOP button.



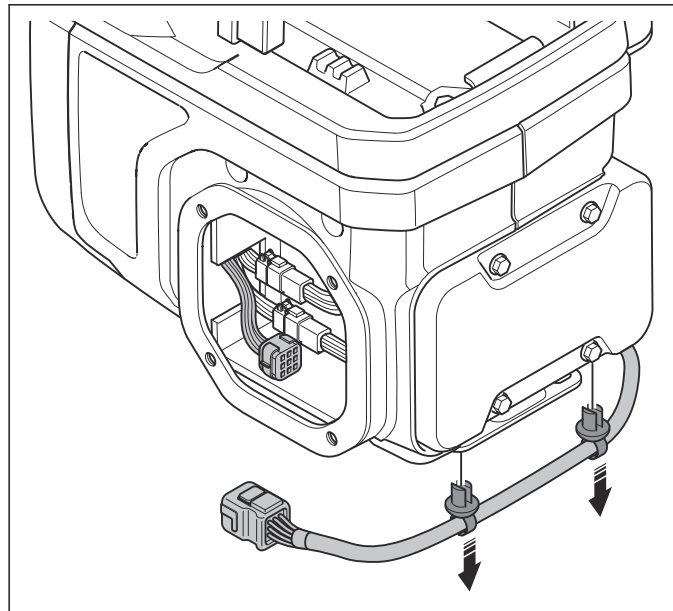
6. Disconnect the 3 connectors and remove the lights.



4. Disconnect the connector.

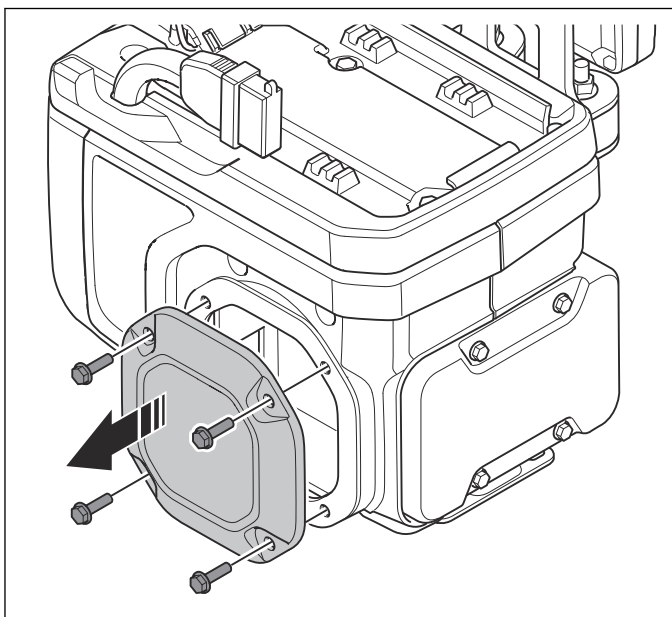


5. Remove the 2 cable holders.

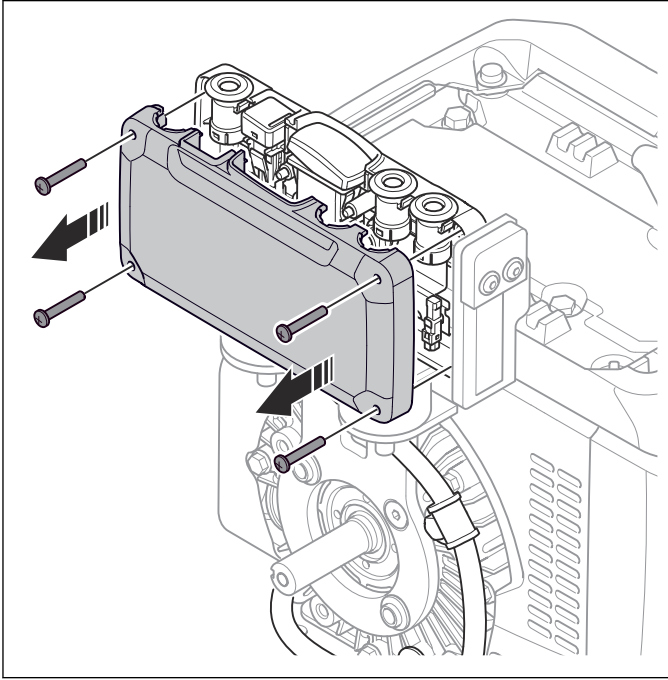


6.10 To remove and install the cable harness

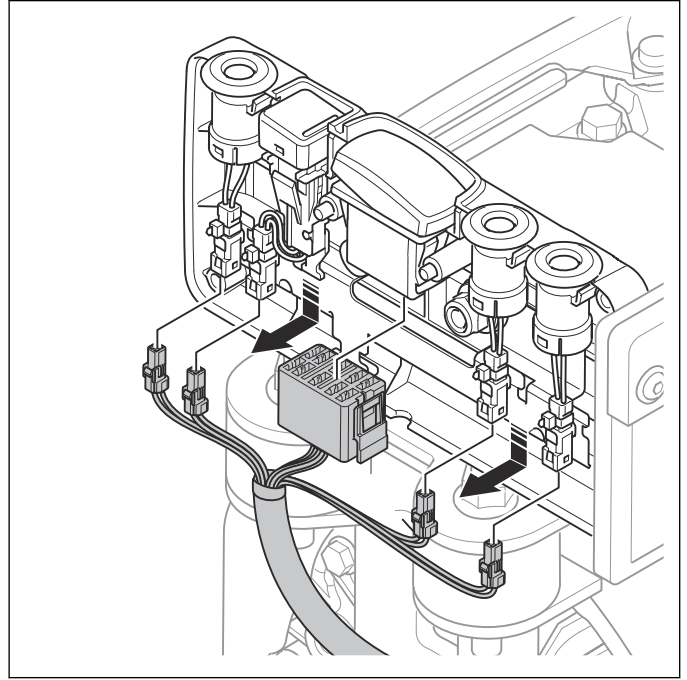
1. Remove the power unit. Refer to *To remove and install the power unit on page 16.*
2. Remove the battery.
3. Remove the 4 screws and the X cover.



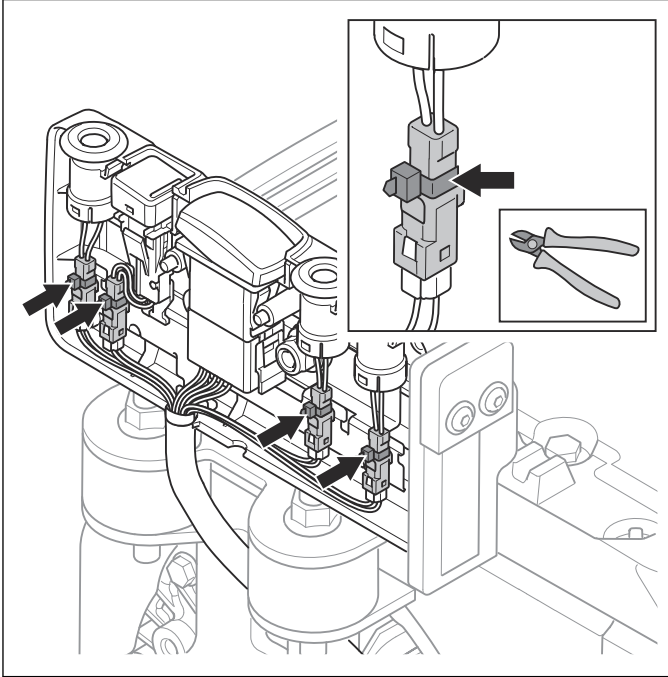
6. Remove the 4 screws and the HMI cover.



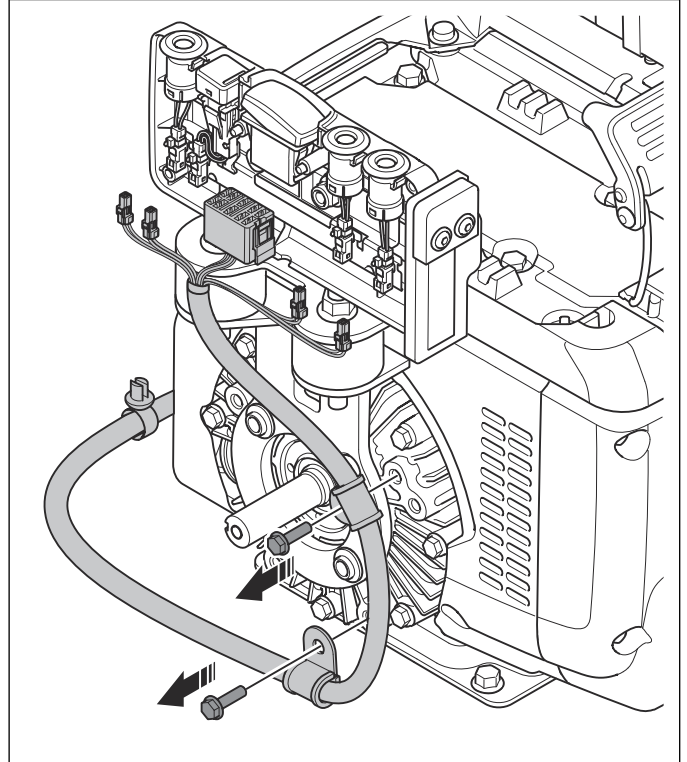
8. Disconnect the 5 connectors.



7. Cut the 4 cable ties.



9. Remove the 2 screws and the cable harness.



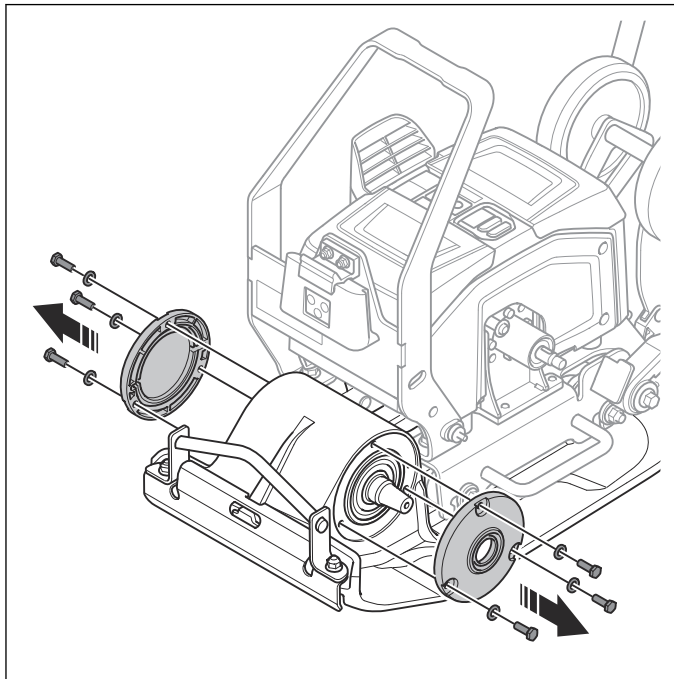
10. Install the cable harness in the opposite sequence.

6.11 To disassemble the eccentric element

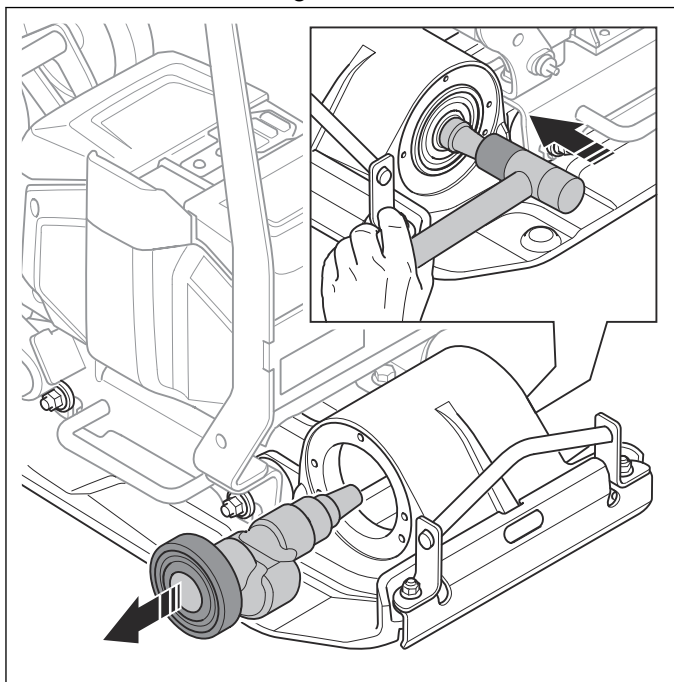
1. Remove the water tank. Refer to *To remove and install the water tank on page 12*.
2. Remove the V-belt cover. Refer to *To remove and install the V-belt cover on page 12*.
3. Remove the V-belt. Refer to *To remove and install the V-belt on page 13*.

4. Remove the V-belt housing. Refer to *To remove the V-belt housing on page 13*.

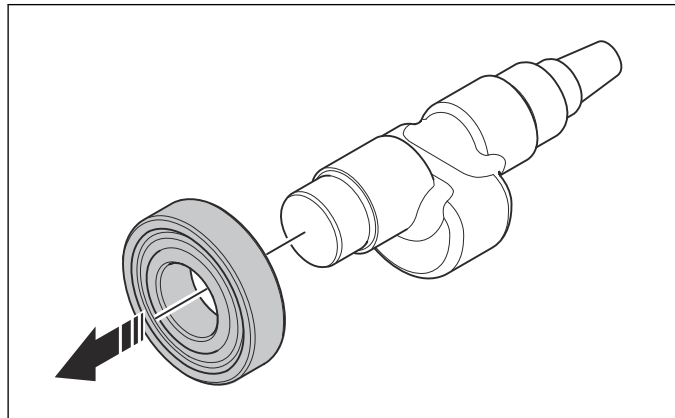
5. Remove the 6 bolts, the 6 washers and the 2 bearing covers.



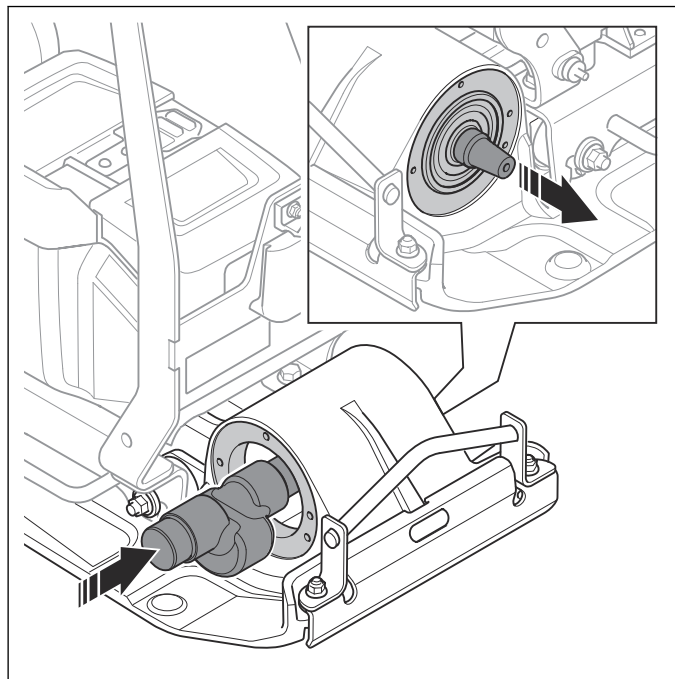
6. Hit the eccentric shaft with a rubber mallet to remove it and the first bearing from the eccentric element.



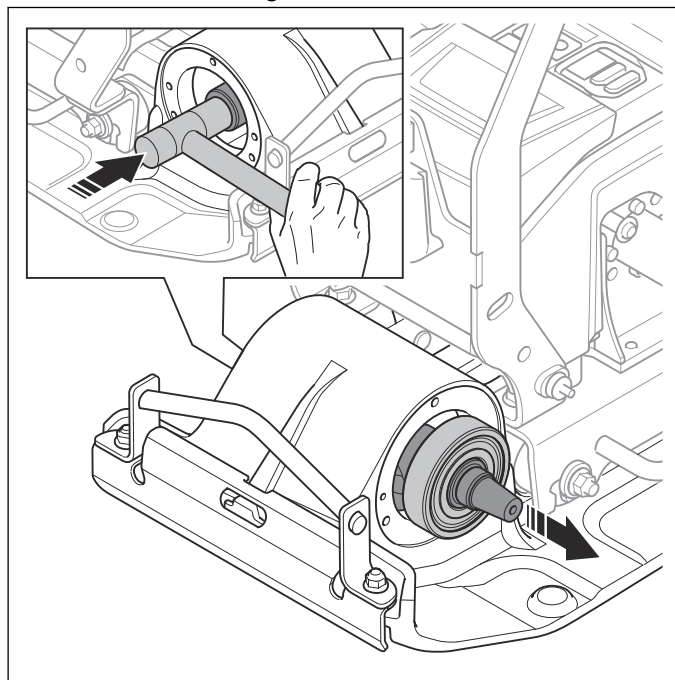
7. Remove the bearing from the eccentric shaft.



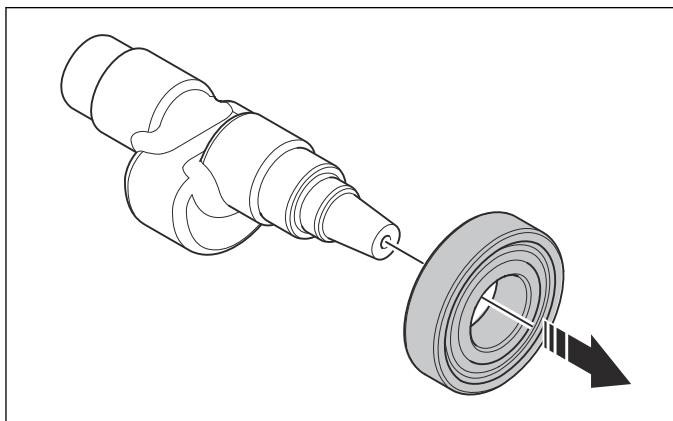
8. Put the eccentric shaft through the second bearing in the eccentric element.



9. Hit the eccentric shaft with a rubber mallet to remove the second bearing from the eccentric element.

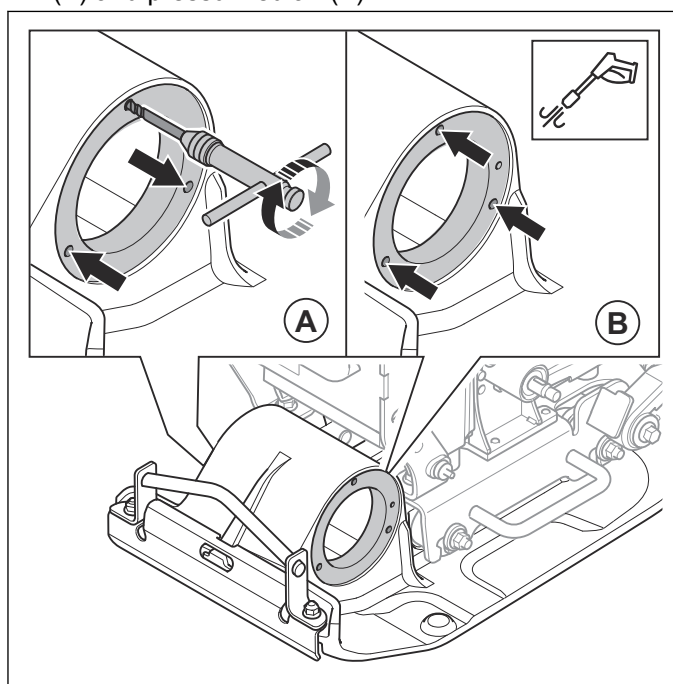


10. Remove the second bearing from the eccentric shaft.



6.12 To assemble the eccentric element

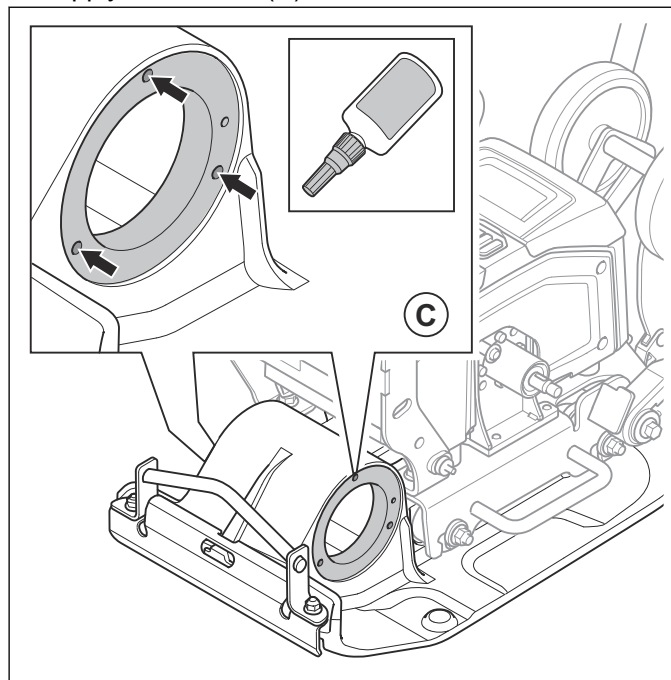
1. Clean the 6 holes that have threads with an M6 tap (A) and pressurized air (B).



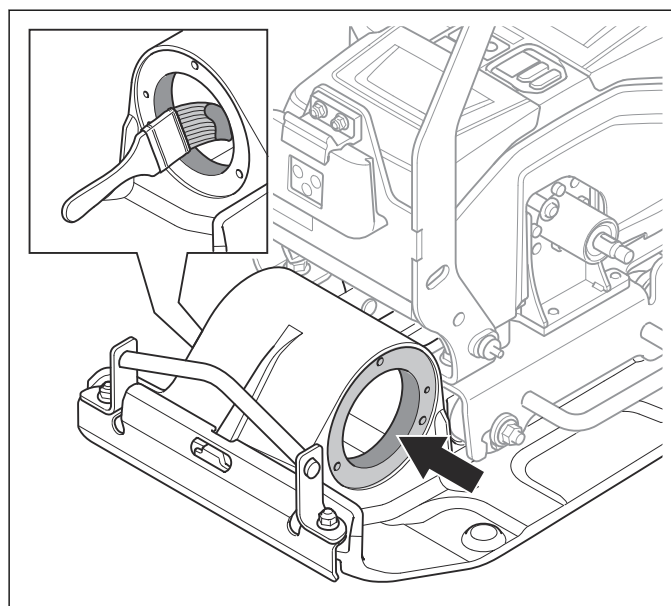
CAUTION: Be careful when you use the thread tap. The thread tap can cause

damage to the threads if you do not use it correctly.

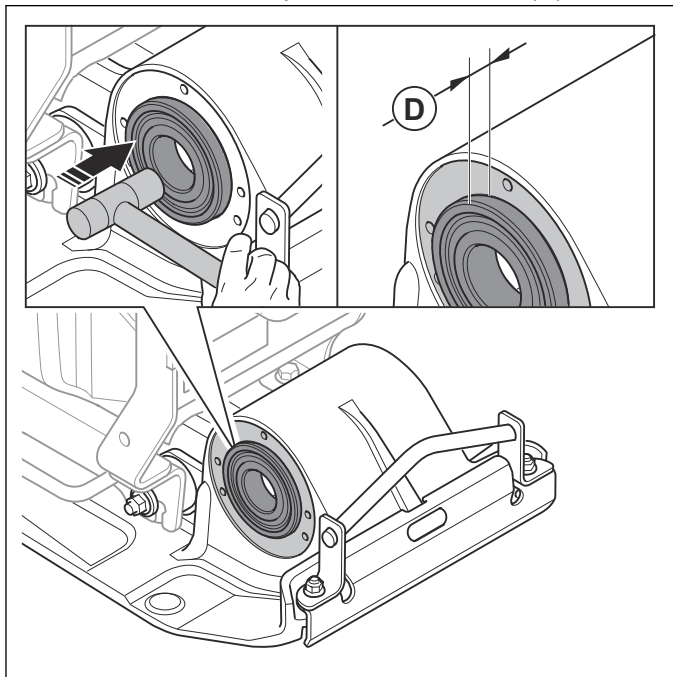
2. Apply Loctite 243 (C) to the threads in the 6 holes.



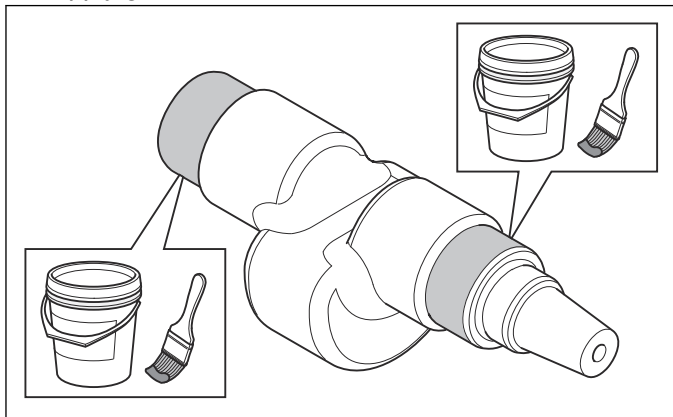
3. Apply anti-fretting grease to the edges of the eccentric element.



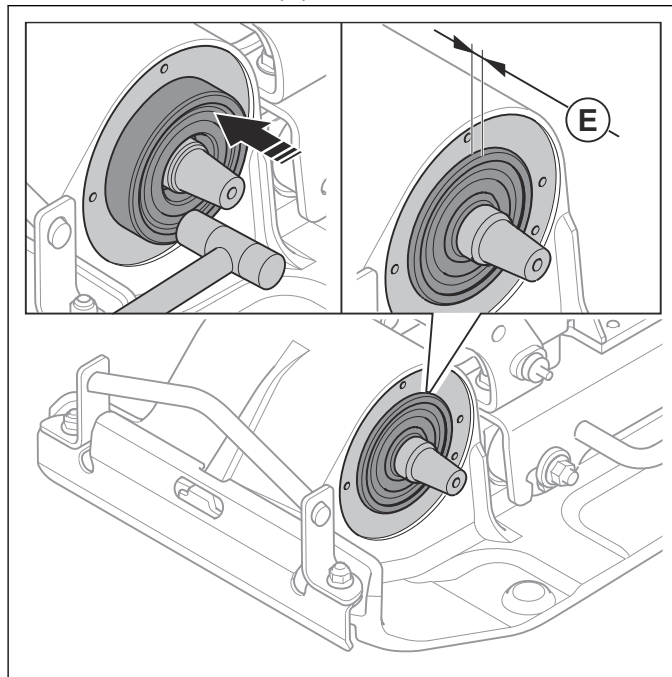
4. Install the first bearing in the eccentric element with a rubber mallet. Stop when the distance (D) is 5 mm.



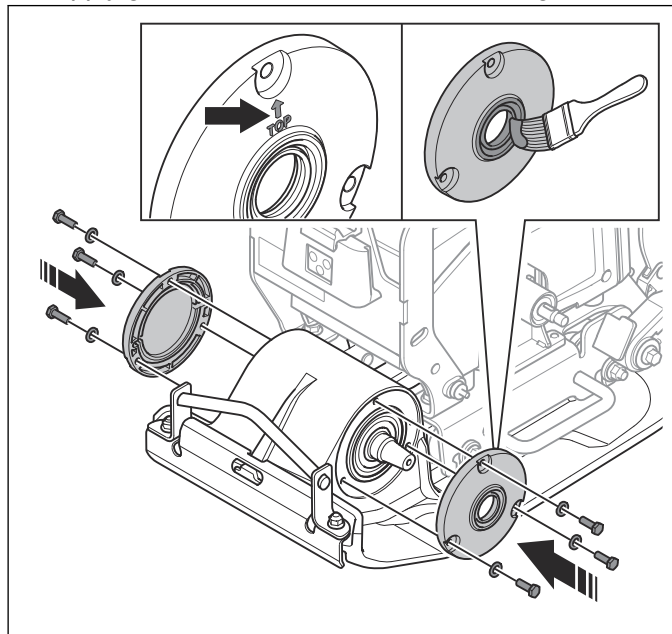
5. Apply grease to the ends of the eccentric shaft.



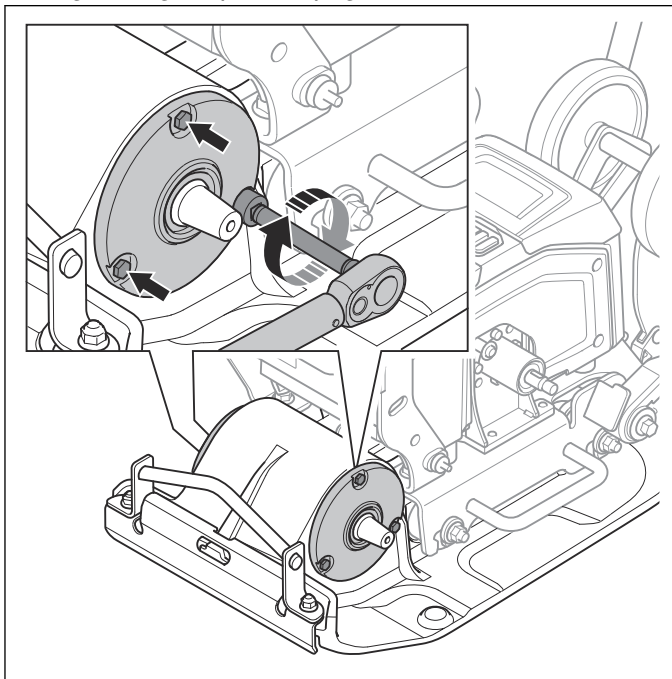
6. Install the eccentric shaft and the second bearing in the eccentric element with a rubber mallet. Stop when the distance (E) is 5 mm.



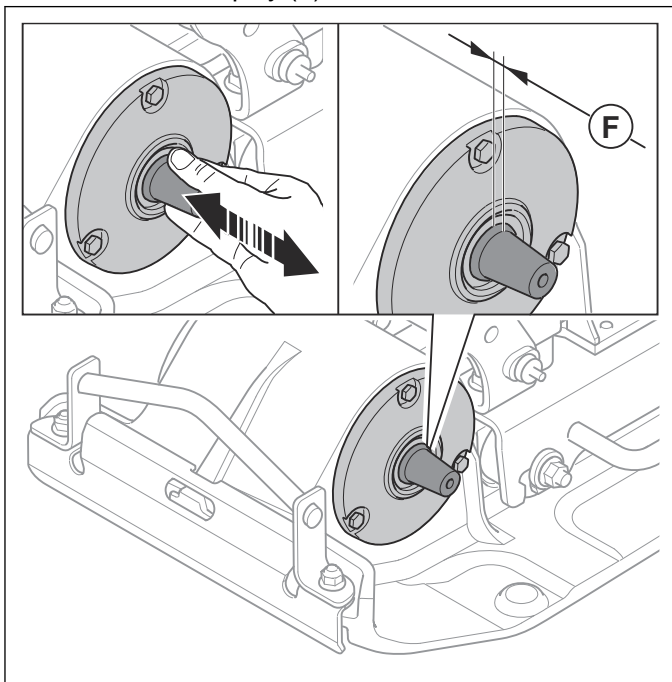
7. Apply grease to the seal in the left bearing cover.



8. Install the 2 bearing covers, the 6 washers and the 6 bolts. Tighten the bolts to the correct torque, refer to *Tightening torques on page 5*.



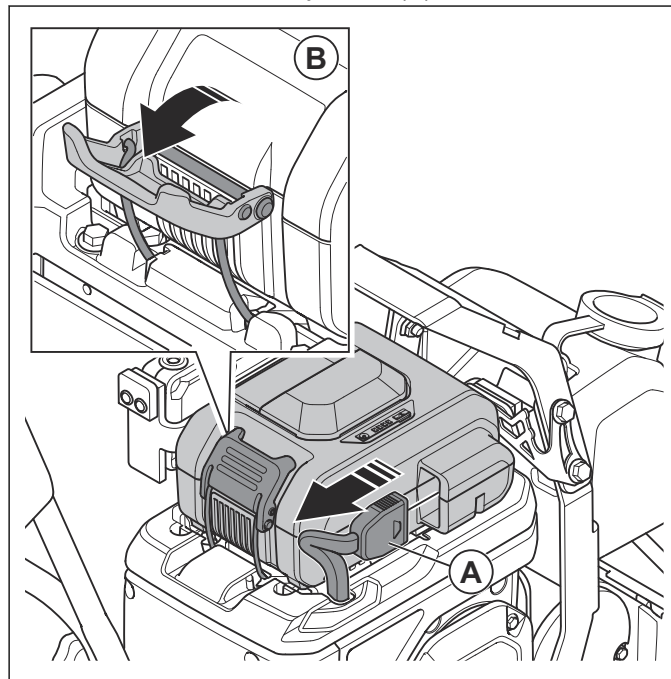
9. Do a check of the eccentric shaft. Make sure that it has 1–2 mm of play (F).



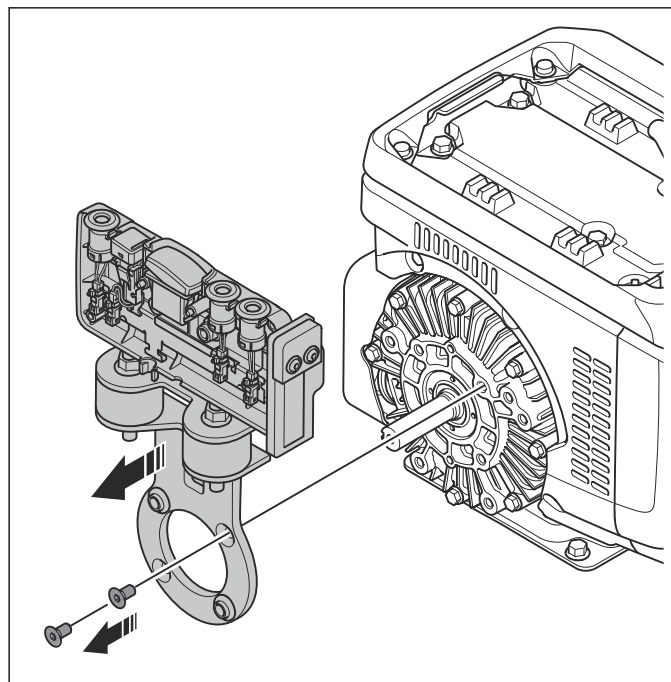
CAUTION: If the eccentric shaft does not have 1–2 mm of play, the bearings become damaged.

6.13 To remove and install the mount rubbers

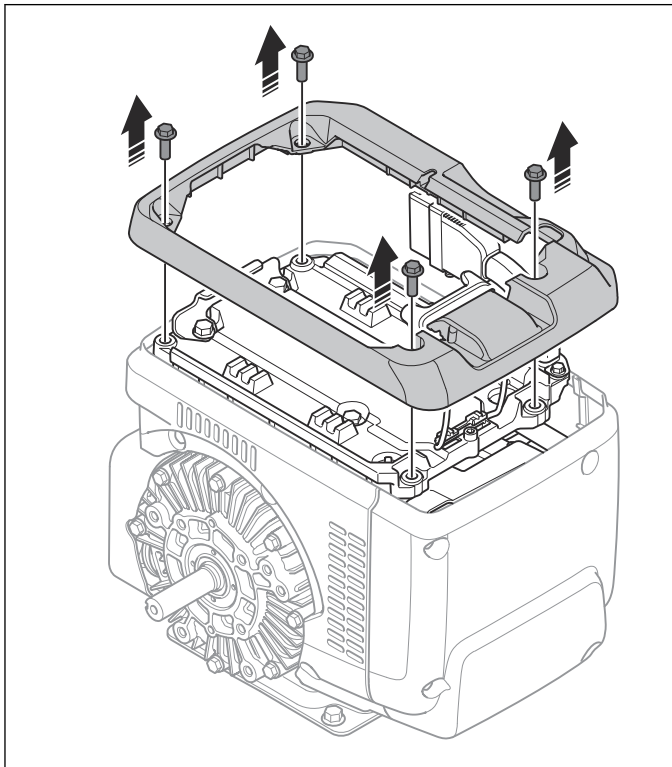
1. Disconnect the battery cable (A).



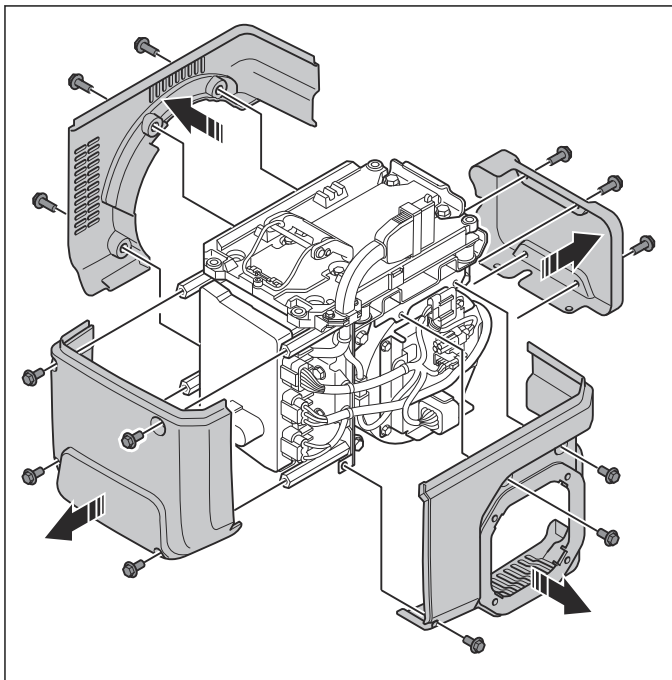
2. Pull the battery fastener lever (B) down to unlock the battery.
3. Remove the battery.
4. Remove the 2 screws and the HMI.



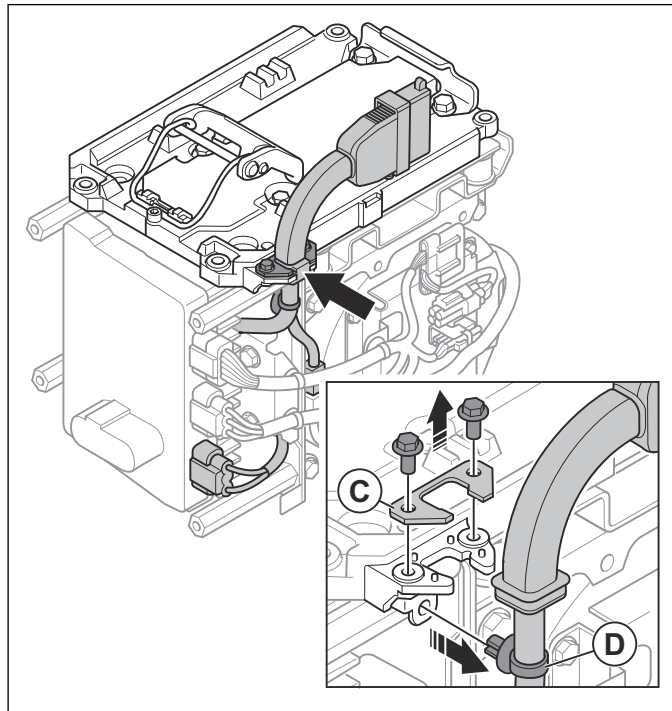
5. Remove the 4 bolts and the battery tray cover.



6. Remove the 14 screws and the 4 side covers.

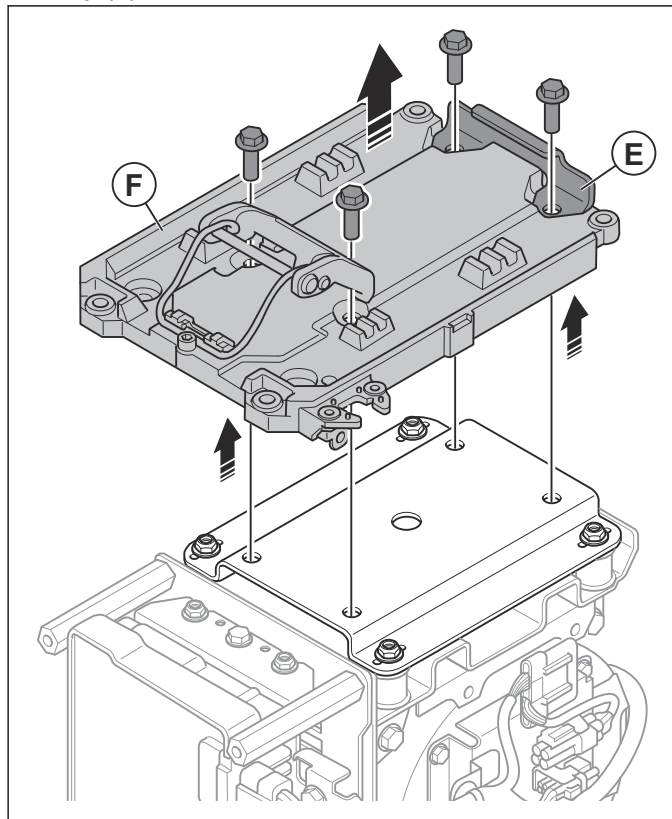


7. Remove the 2 bolts and the connector stay (C).

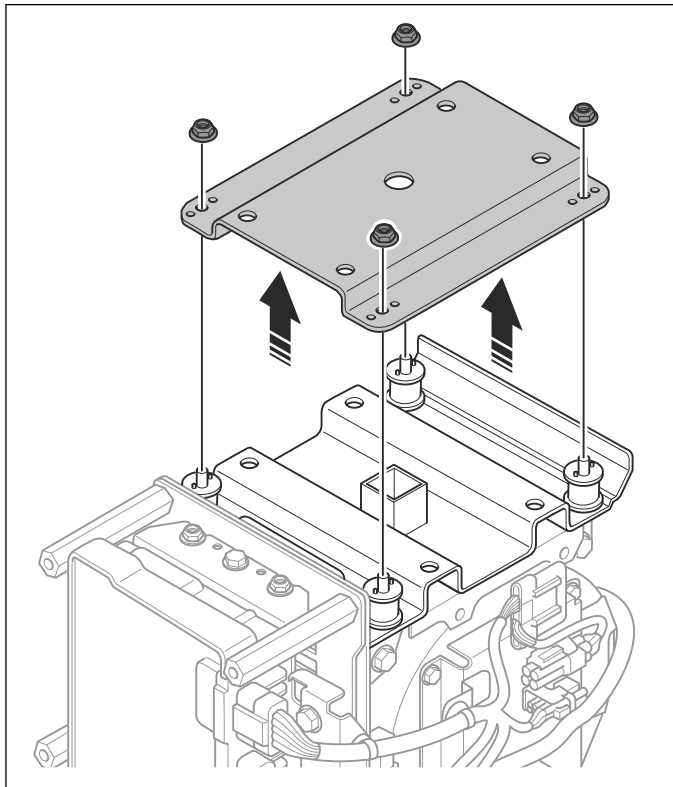


8. Remove the cable (D).

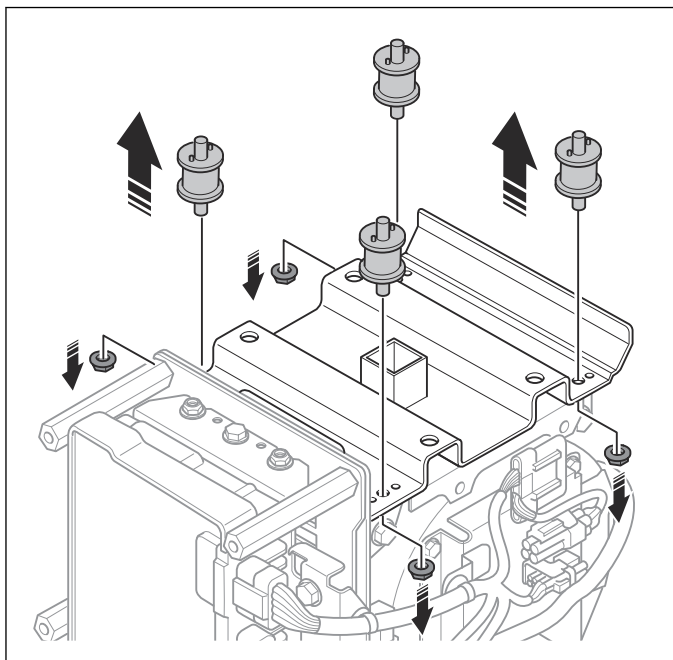
9. Remove the 4 bolts, the bracket (E) and the battery tray (F).



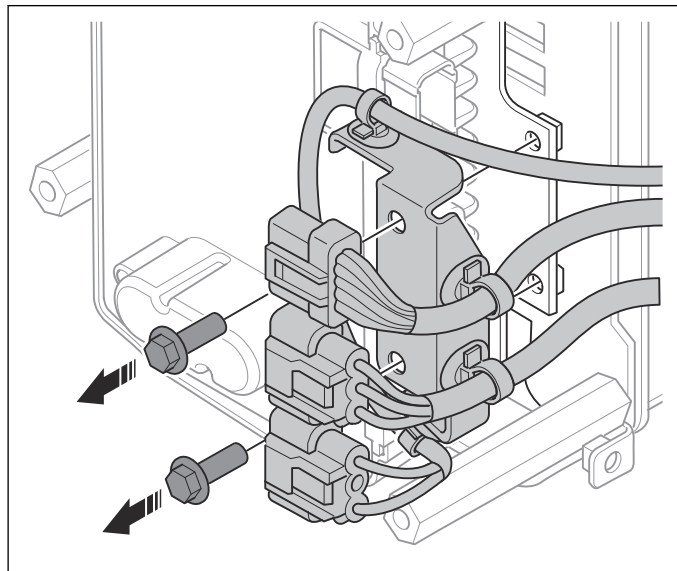
10. Remove the 4 nuts and the battery frame.



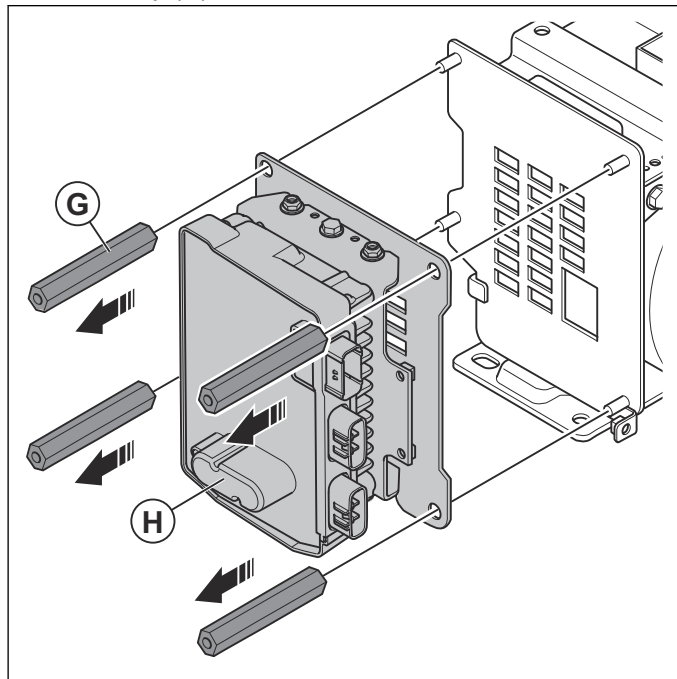
11. Remove the 4 nuts and the 4 rubber mounts.



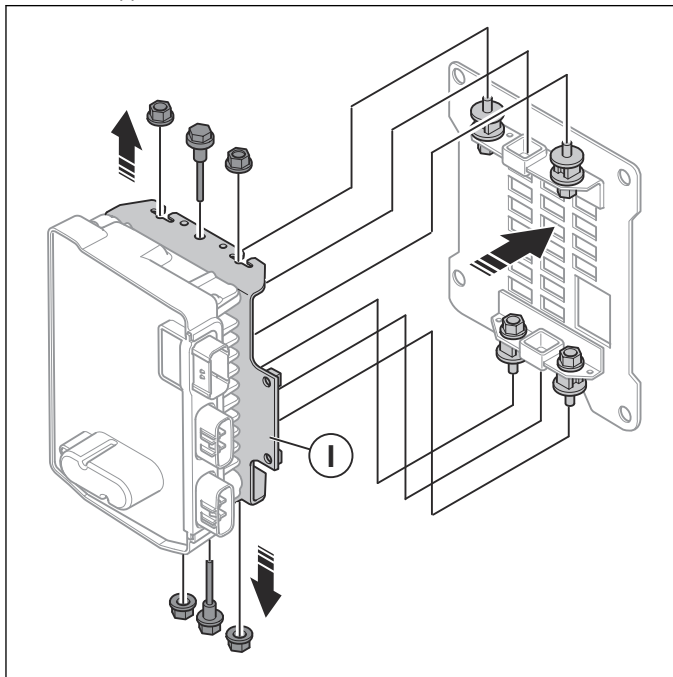
12. Remove the 2 bolts and disconnect the 3 connectors to the PDU.



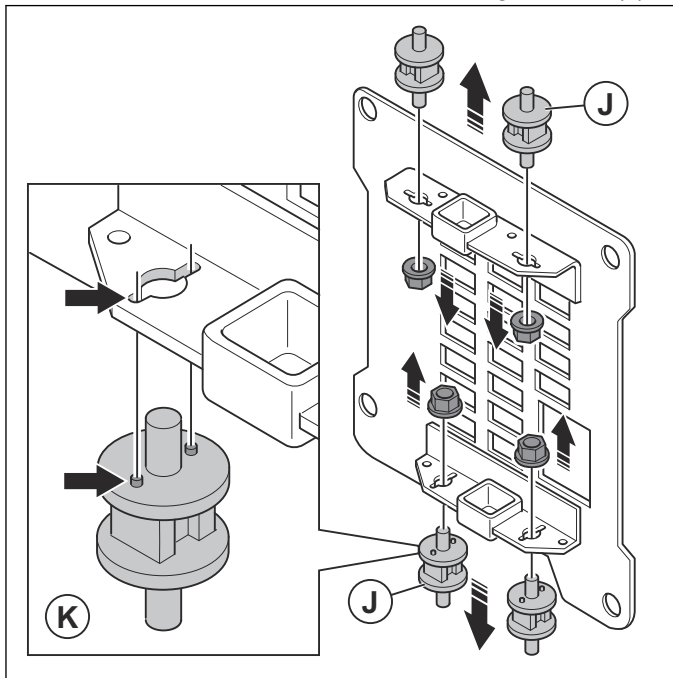
13. Remove the 4 special collars (G) and the PDU assembly (H).



14. Remove the 2 bolts, the 4 nuts and the cover of the PDU (I).



15. Remove the 4 nuts and the 4 mounting rubbers (J).



16. Install the rubber mounts in the opposite sequence.

Note: Make sure that the pins on the mount rubbers are correctly aligned with the slots in the cover of the PDU when you install the mount rubbers (K).

7 Technical data

Product	LFe 60, light forward compactor
Motor type	Honda, GXE2.0H
Weight with battery, kg/lb	88/194
Weight without battery, kg/lb	78/172
Vibration frequency, Hz/rpm	95/5700
Amplitude, mm/in.	2/0.08
Centrifugal force, kN/lbf	10.4/2338
Operation speed, m/min or ft./min	22 or 72
Max. tilt, degrees/%	20°
Water tank for asphalt, l/gal	5/1.32

Battery specification

Type	Rechargeable Li-ion battery, DP72104Z
Capacity, Ah	10
Voltage DC, V	72
Dimensions, mm/in.	233x268x150/9.2x10.6x5.9
Weight, kg/lb	6.4/14.1
Storage temperature with battery, °C/°F	-5–30°C / 23–86°F
Operating temperature, °C/°F	5–40°C / 41–104°F
Charging temperature, °C/°F	5–30°C / 41–86°F

Battery charger specification

Type	CV7285Z
Mains voltage AC, V	100-240
Frequency, Hz	50-60
Output voltage DC, V	82.8
Output current, A	8.5

Noise and vibration emissions

Sound power level, measured dB (A)	99
Sound power level, guaranteed L_{WA} dB (A) ¹	100
Sound pressure level at the operator's ear, L_P , dB (A) ²	85
Vibration level, a_{hv} , m/s ² , standard handle/low vibration handle ³	6.9/1.6

Weights for options

Transport wheel, kg/lbs	3.1/6.9
Low vibration handle, kg/lbs	1.1/2.4

¹ Noise emissions in the environment measured as sound power (L_{WA}) as per EN ISO 3744 in conformity with EC directive 2000/14/EC. The difference between guaranteed and measured sound power is that the guaranteed sound power also includes dispersion in the measurement result and the variations between different machines of the same model according to Directive 2000/14/EC.

² Sound pressure level L_P according to EN ISO 11201, EN 500-4. Uncertainty K_{PA} 3.0 dB (A).

³ Vibration value according to EN 500-4. Reported data for vibration level has a typical statistical dispersion (standard deviation) of 1.5 m/s².



www.husqvarna.com

9705169-01

2024-09-24