

---

## Contents

---

Introduction.....	2	Product overview.....	5
Safety.....	2	Repair instructions.....	6
Servicing data.....	3	Troubleshooting.....	7
Servicing tools.....	4	Technical data.....	8

---

## Introduction

---

### Document description

This manual gives a full description of how to do maintenance and repair on the product. It also gives safety instructions that the personnel must obey.

### Target group

This manual is for personnel with a general knowledge of how to do repair and do servicing. All personnel that do repair or do servicing on the product must read and understand the manual.

### Revisions

Changes to the product can cause changes to the maintenance work and spare parts. Separate information is sent out for each change.

Read the manual together with all received information about changes to maintenance and spare parts for the product.

### Safety



**WARNING:** All personnel that repair or do servicing on the product must read and understand the safety instructions in this workshop manual.

### Servicing tools

The manual gives information about necessary servicing tools. Always use original tools from Husqvarna.

---

## Safety

---

### Safety definitions

Warnings, cautions and notes are used to point out specially important parts of the manual.



**WARNING:** Used if there is a risk of injury or death for the operator or bystanders if the instructions in the manual are not obeyed.



**CAUTION:** Used if there is a risk of damage to the product, other materials or the adjacent area if the instructions in the manual are not obeyed.

**Note:** Used to give more information that is necessary in a given situation.

### General safety instructions



**WARNING:** Apply a new warning label if a warning symbol on the product is damaged or missing.

### Symbols on the product



Charging error LED.



Charging LED.



Fast charge button.



The product agrees with the applicable EC directives.



Recycle the product at an applicable disposal location for electrical and electronic equipment.



The product or package of the product is not domestic waste.



Do not submerge the battery in water.



Keep the battery away from sunlight, heat or open flame.

yyyywwxxxx

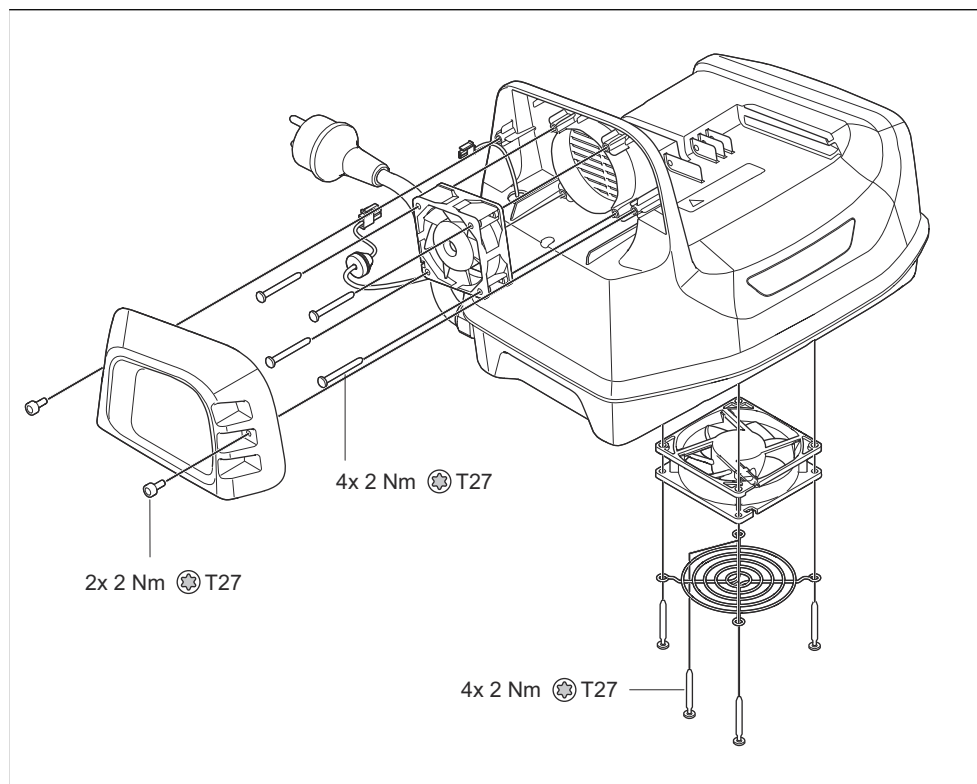
The rating plate shows serial number.

yyyy is the production year, ww is the production week.

**Note:** Other symbols/decals on the product refer to certification requirements for some commercial areas.

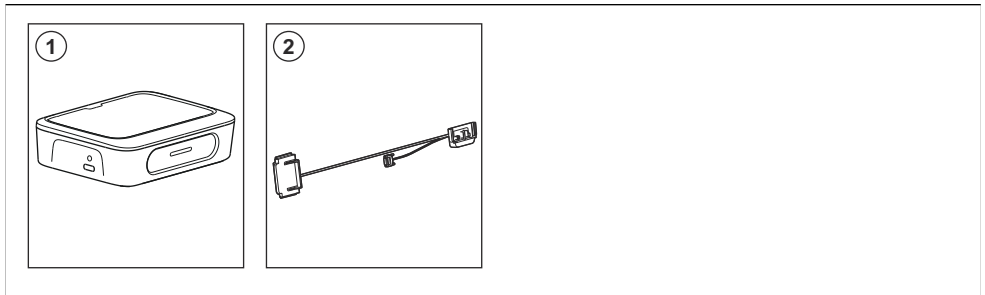
## Servicing data

### Servicing data



# Servicing tools

## Servicing tools



Item	Description	Use	Article number
1	Service interface box.	To do a check of the product.	598 07 28-02
2	Adapter cable for battery products.	To do a check of battery products with the diagnostic tool kit.	529 47 15-01

## Service interface box

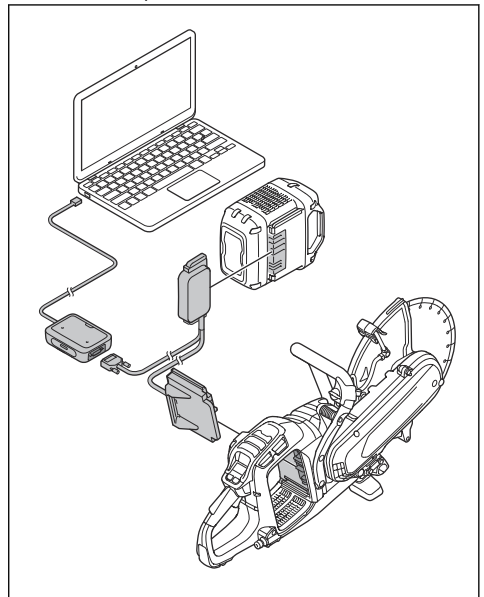
The service interface box (SIB) is used with a computer (not included) for Husqvarna products.

The service interface box transmits data from the product and battery to the computer, for example product ID. There is also a diagnostic tool list and a list of saved error codes. The service interface box is also used to update the software in battery products.

### To connect the service interface box

1. Start the service interface box and connect it to your computer.

2. Connect the product to the service interface box.



3. Connect the cable to the service interface box.
4. Start the product to do a software update.

---

**Note:** The service interface box can only be used to update software.

---

---

**Note:** Refer to the manual of the service interface box for instructions and obey the instructions.

---

---

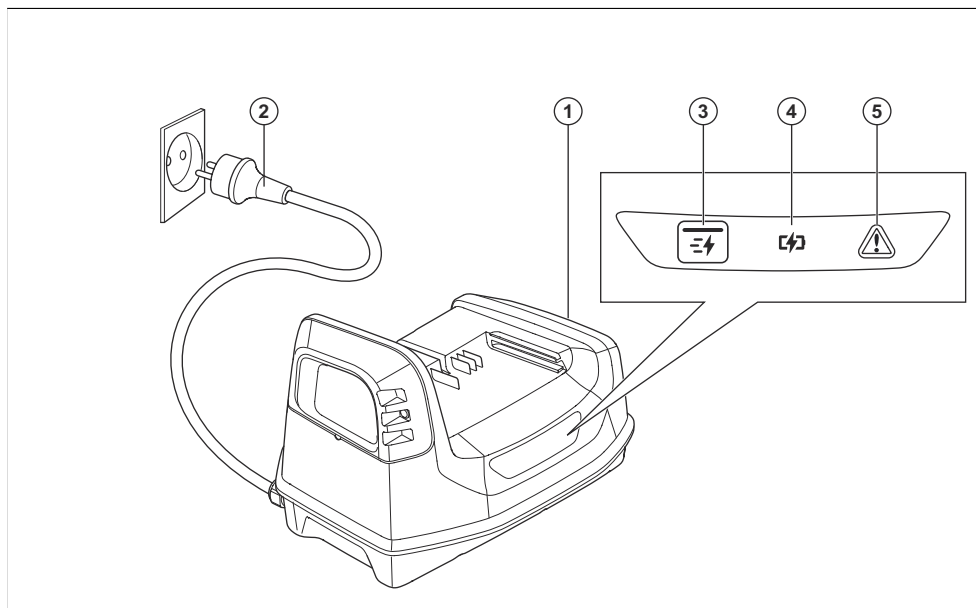
**Note:** The Husqvarna service hub can also be used to update software.

---

---

## Product overview

---



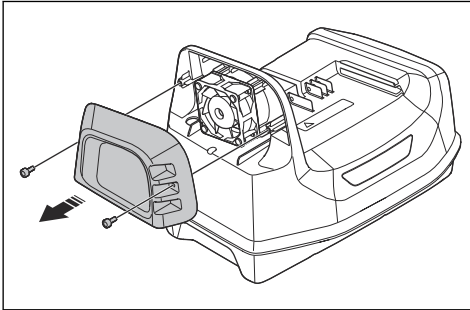
- 1. Battery charger
- 2. Power plug
- 3. Fast charge button

- 4. Charging LED
- 5. Error LED on charger

## Repair instructions

### To remove and install the fan cover

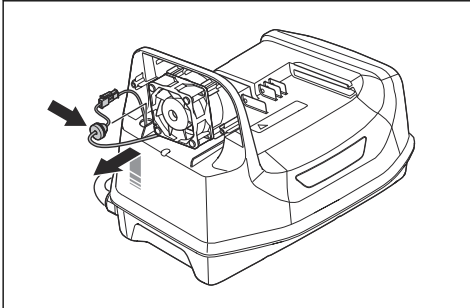
1. Remove the 2 screws.



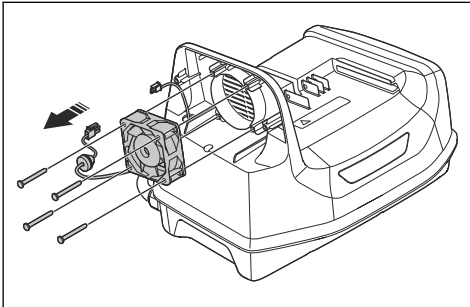
2. Remove the fan cover.
3. Install in the opposite sequence.

### To remove and install the battery cooling fan

1. Remove the fan cover. *To remove and install the fan cover on page 6.*
2. Pull out the grommet and the fan connector.



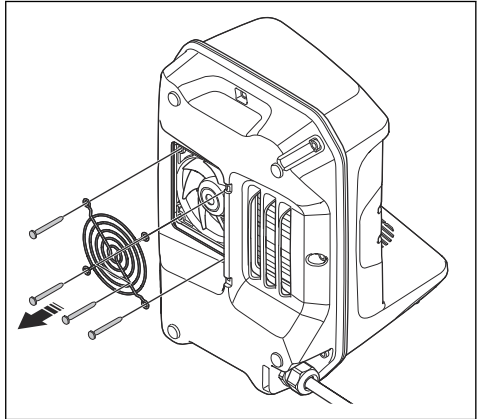
3. Disconnect the fan connector
4. Remove the 4 screws and the battery cooling fan.



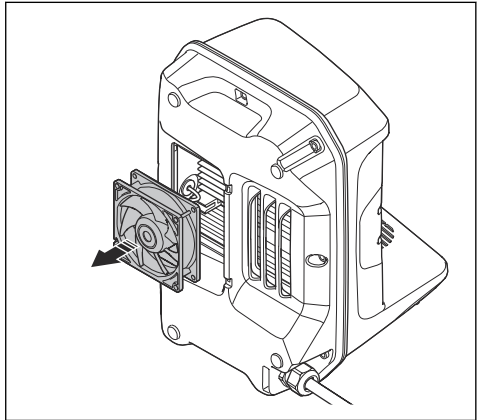
5. Install in the opposite sequence.

### To remove and install the charger cooling fan

1. Remove the 4 screws and the fan guard.

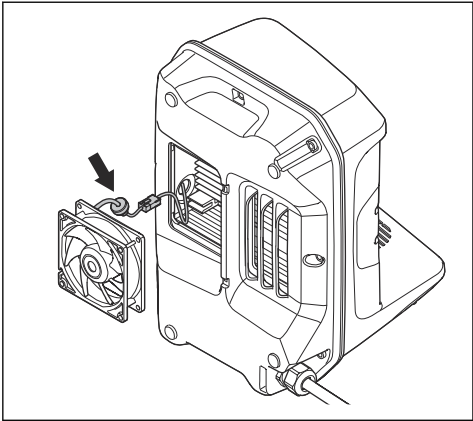


2. Remove the fan.



**CAUTION:** Do not pull the cable.

3. Pull out the grommet and the fan connector.



4. Disconnect the fan connector



**CAUTION:** Make sure that the connector does not fall into the charger.

5. Install in the opposite sequence.

## Troubleshooting

### Toubleshooting

Symptoms	Cause	Solution
The error LED on the product and the temperature symbol on the battery flash.	Temperature deviation, the battery is too cold or too hot to charge.	Use the product in ambient temperatures between 5°C (41°F) and 40°C (104°F). Let the battery become cool.
The error LED on the product flashes and the battery state of charge shows fully charged.	The battery is charged too much.	Remove the battery and wait 15 min. Do a check of the state of charge of the battery.
		Put the battery in the product and start the product for 5 minutes.
		Measure the battery voltage. Do a discharge of the battery with a load if the voltage is higher than 110.5 V.
The error LED flashes on the product and the battery state of charge is low.	The battery is discharged.	Remove the battery and wait 15 min. Do a check of the state of charge of the battery.
The error LED on the product is red.	The charger is too hot.	Do a check of the charger cooling fan. Replace the charger cooling fan if it is necessary.
		Use compressed air to clean the cooling channels.
	Possible permanent charger error.	Remove the battery and start the charger. Do not use the product if the error LED on the charger is red.
The error LED on the product flashes red and the error LED on the battery is red.	Defective battery.	Replace the battery.

Symptoms	Cause	Solution
The error LED on the product flashes. No error on the battery.	Temporary error.	Remove the battery from the product or tool and wait 60 seconds. Put the battery in the product and charge the battery.
		Clean the terminals on the product to make sure that the connection between the product and the battery is good.

---

## Technical data

---

### Technical data

Battery charger	100-C900X		100-C1800X	
Market	EU	US	EU	US
Input Voltage, V	100-240	100-120	100-240	100-120
Frequency, Hz	50-60	50-60	50-60	50-60
Power, W	900	900	1800	1800











[www.husqvarna.com](http://www.husqvarna.com)

Original instructions

1142674-26



2021-06-07