

Workshop manual

FS 600 E



English

Contents

1 Introduction

1.1 Document description.....	3
1.2 Target group.....	3
1.3 Revisions.....	3
1.4 Safety.....	3

2 Safety

2.1 Safety definitions.....	4
2.2 General safety instructions.....	4
2.3 Machine stop button.....	4
2.4 Symbols on the product.....	4

3 Electrical enclosure

3.1 Overview electrical enclosure (CE).....	6
3.2 Overview electrical enclosure (NA).....	7

4 Troubleshooting

4.1 The product does not start (CE).....	8
4.2 The product does not start (NA).....	9
4.3 Electrical system fault (CE).....	10
4.4 Electrical system fault (NA).....	12

5 Diagrams

5.1 Wiring diagram, electrical enclosure (CE).....	13
5.2 Wiring diagram, electrical enclosure (NA).....	14

1 Introduction

1.1 Document description

This manual gives information regarding, the electrical enclosure, troubleshooting and the electrical schematics.

1.2 Target group

This manual is for personnel with a general knowledge of how to do repair and do servicing. All personnel that do repair or do servicing on the product must read and understand the manual.

1.3 Revisions

Changes to the product can cause changes to the maintenance work and spare parts. Separate information is sent out for each change.

Read the manual together with all received information about changes to maintenance and spare parts for the product.

1.4 Safety



WARNING: All personnel that repair or do servicing on the product must read and understand the safety instructions in this workshop manual.

2 Safety

2.1 Safety definitions

Warnings, cautions and notes are used to point out specially important parts of the manual.



WARNING: Used if there is a risk of injury or death for the operator or bystanders if the instructions in the manual are not obeyed.



CAUTION: Used if there is a risk of damage to the product, other materials or the adjacent area if the instructions in the manual are not obeyed.

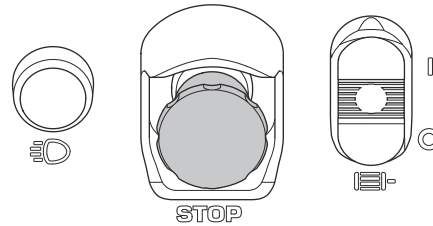
Note: Used to give more information that is necessary in a given situation.

2.2 General safety instructions

- Read and obey this workshop manual.
- Obey the local safety regulations when you repair or do servicing of the product.
- The safety equipment you use must obey local regulations.
- Use only the equipment that the manufacturer recommends.
- Use personal protective equipment.
- Use protective gloves and safety glasses. The safety glasses must obey the ANSI Z87.1 for US or EN166 for EU countries.
- Use earmuffs when the product is in operation.
- Always stop the product before you repair or do servicing of the product.
- Remove flammable materials from the work area. The product can cause sparks.
- Do not use the product if the power cord or cables are damaged.
- Disconnect the product from the mains socket.
- If possible, keep the power cord disconnected when you repair or do servicing of the product.
- Use cables adapted to outdoor operation.
- Do not touch the wires when the product is on. An electrical shock can cause injury.
- Do not point compressed air to your body. Compressed air can go into the blood stream.
- Always tighten the nuts and the bolts on the product correctly.
- Do not use the power cord to lift the product. Do not pull the power cord to disconnect the product.
- Do checks of the product for warning labels that are damaged. Replace the warning labels that are damaged.
- Always read the warning labels of product supplies.
- Obey the local waste regulations.

2.3 Machine stop button

The machine stop button (STOP) stops the motor. The machine stop button does not stop the lights.



Note: Do not use the machine stop button to stop the product unless there is an emergency.

2.4 Symbols on the product



WARNING: This product can be dangerous and cause serious injury or death to the operator or others. Be careful and use the product correctly.



Read the manual carefully and make sure that you understand the instructions before you use this product.



Use hearing protection, eye protection and respiratory protection.



All displacement of the machine outside the cutting area shall be carried out with the tool not in rotation.



Remove the blade before transportation, when you lift, put on or remove the product.



The arrow on the blade guard shows in which direction the cutting blade rotates.



Lift/lower control.



WARNING! The dust can cause health problems. Use an approved respiratory protection. Always make sure that there is good airflow.



Noise emission to the environment complies with applicable EC Directives.



Risk of cut injuries. Keep all body parts away from the cutting blade.



Engage/disengage the parking brake.



Fill tank, only water.



Always lift the product at the lifting eye.

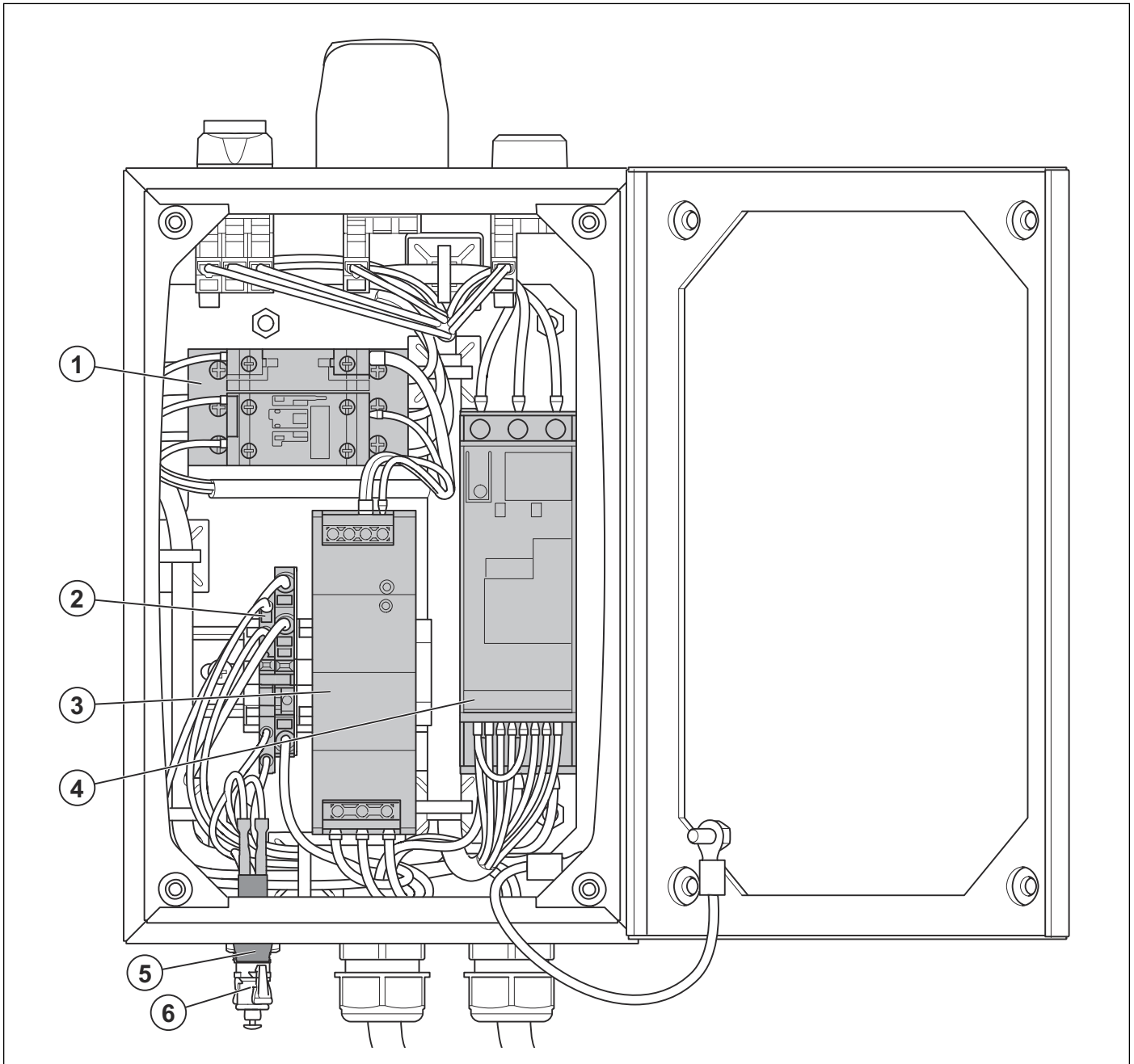


Risk of electrical shock: Inspection and/ or maintenance must be done with the motor stopped and the plug disconnected.

Note: Other symbols/decals on the product refer to certification requirements for some markets.

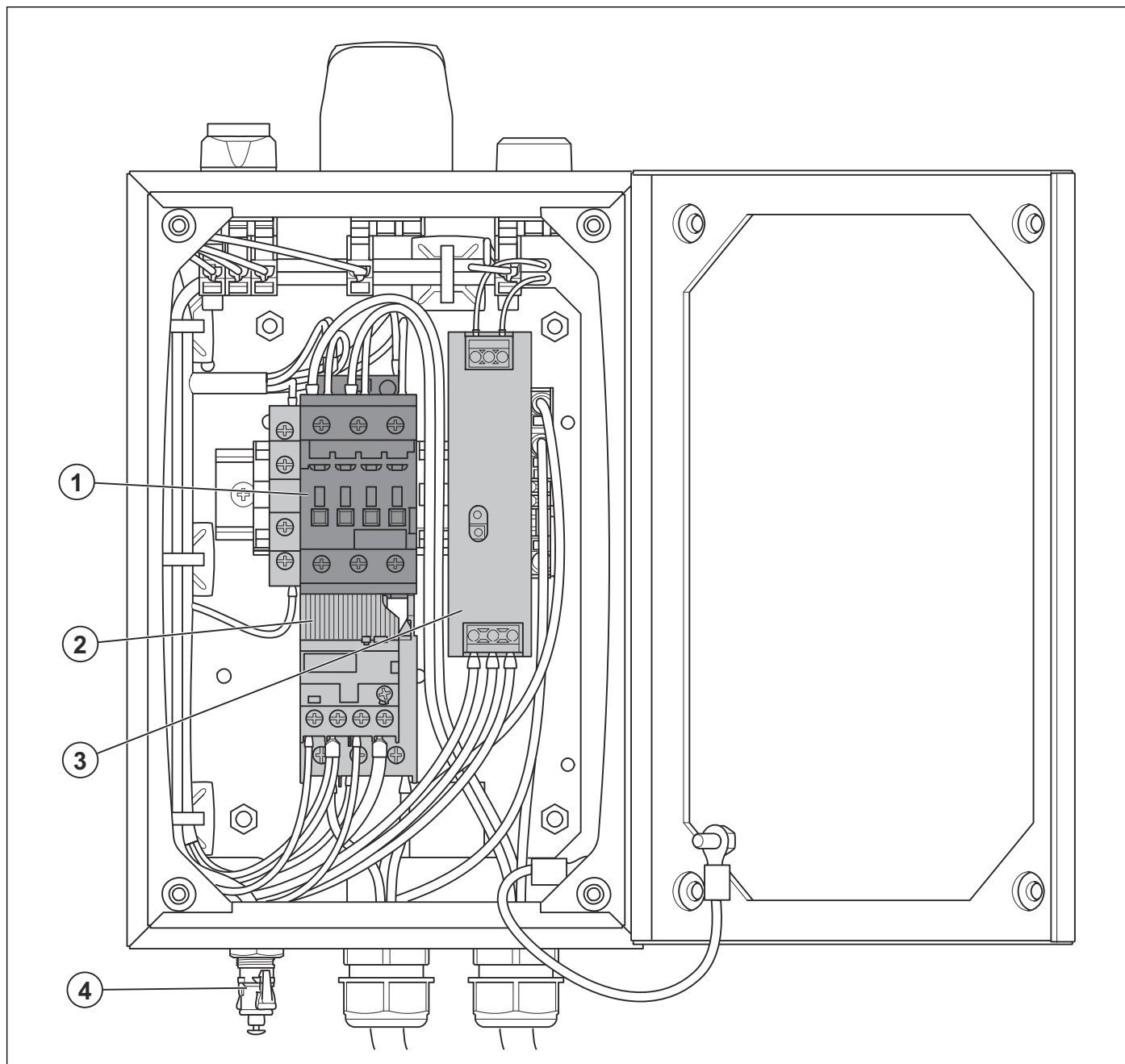
3 Electrical enclosure

3.1 Overview electrical enclosure (CE)



- | | |
|--------------------|-----------------|
| 1. Contactor | 5. Fuse |
| 2. Ground terminal | 6. Light outlet |
| 3. Power supply | |
| 4. Soft starter | |

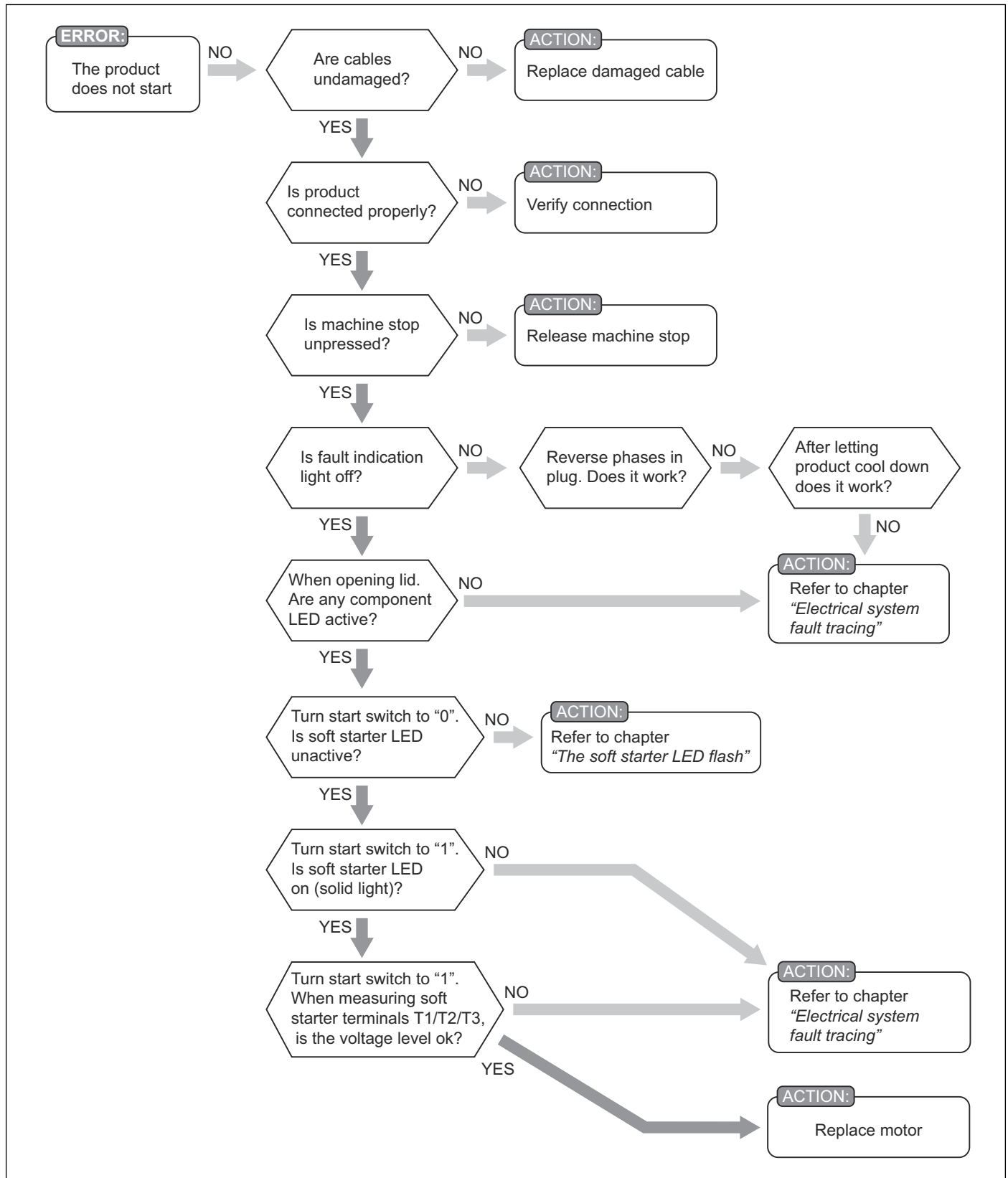
3.2 Overview electrical enclosure (NA)



1. Contactor
2. Overload relay
3. Power supply
4. Light outlet

4 Troubleshooting

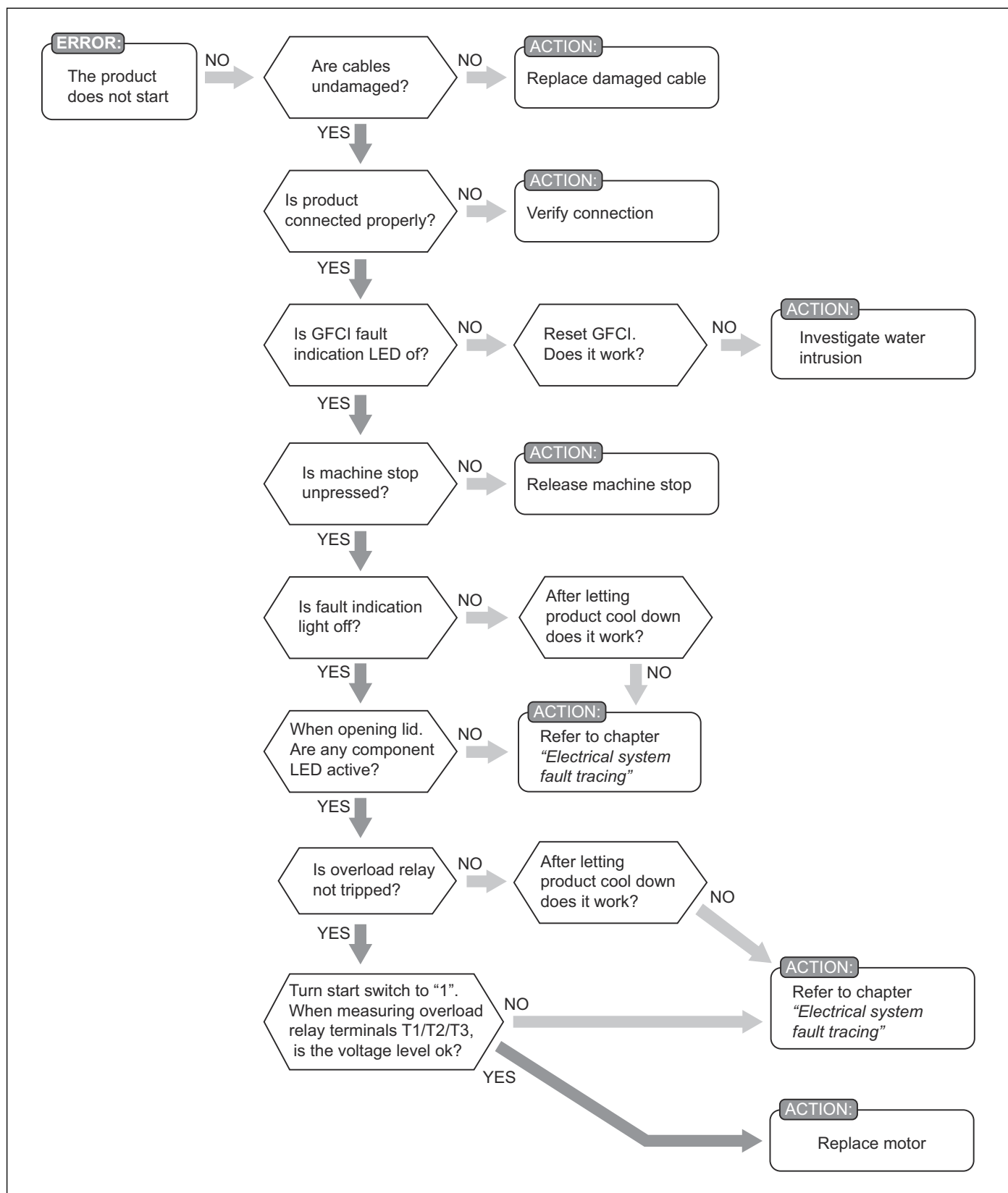
4.1 The product does not start (CE)



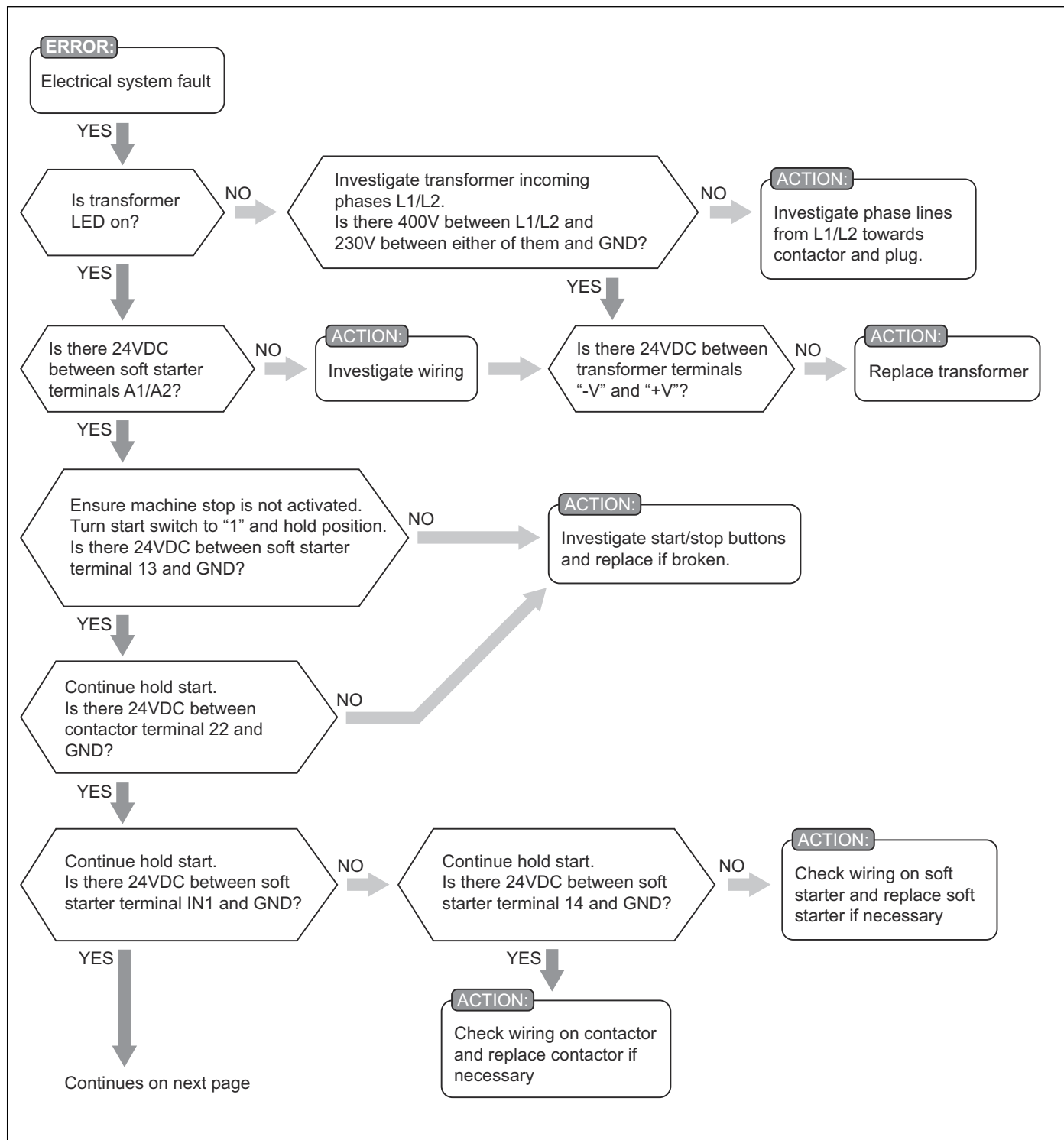
4.2 The product does not start (NA)

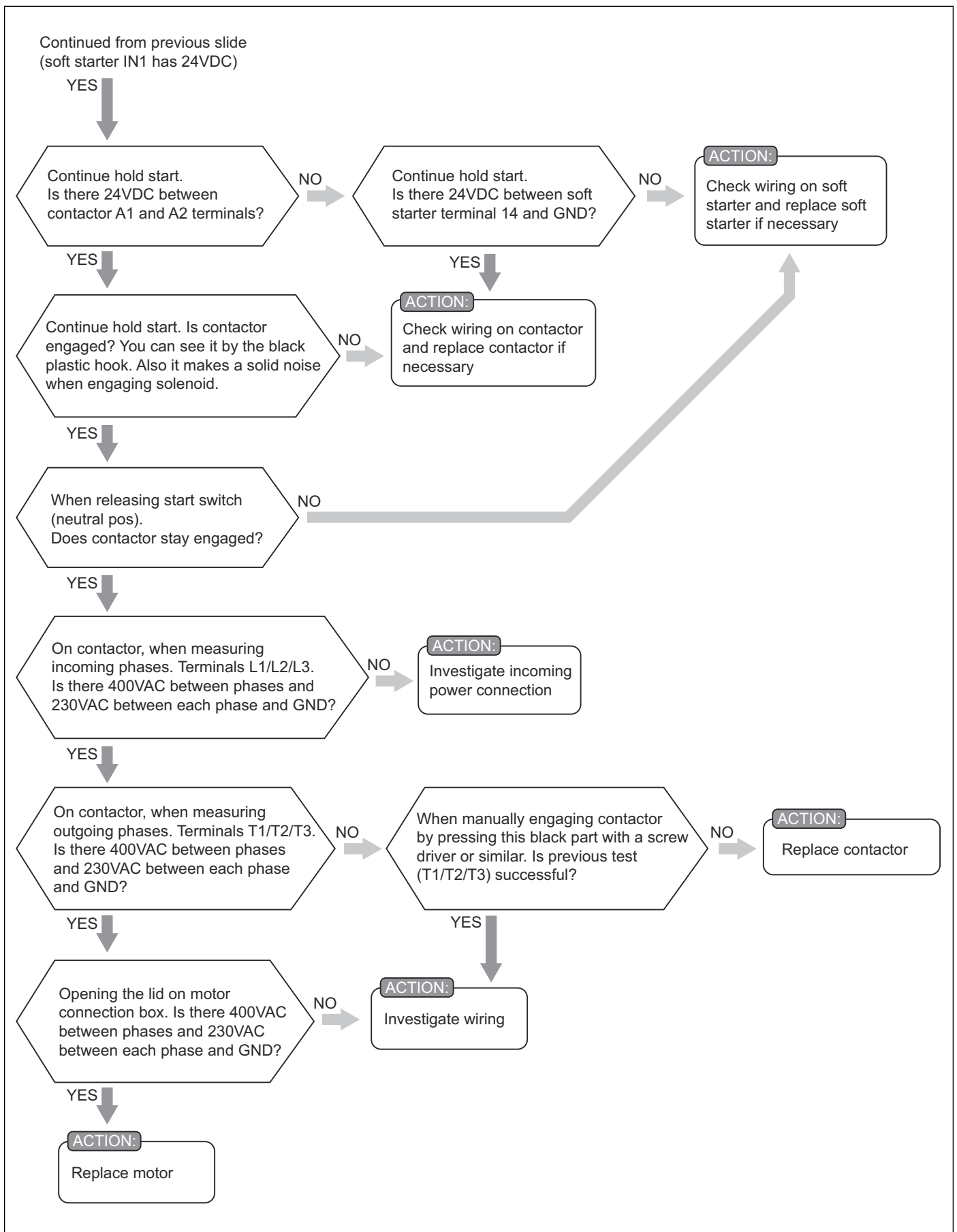


WARNING: Control voltage is 240VAC! Be careful not to touch terminals.

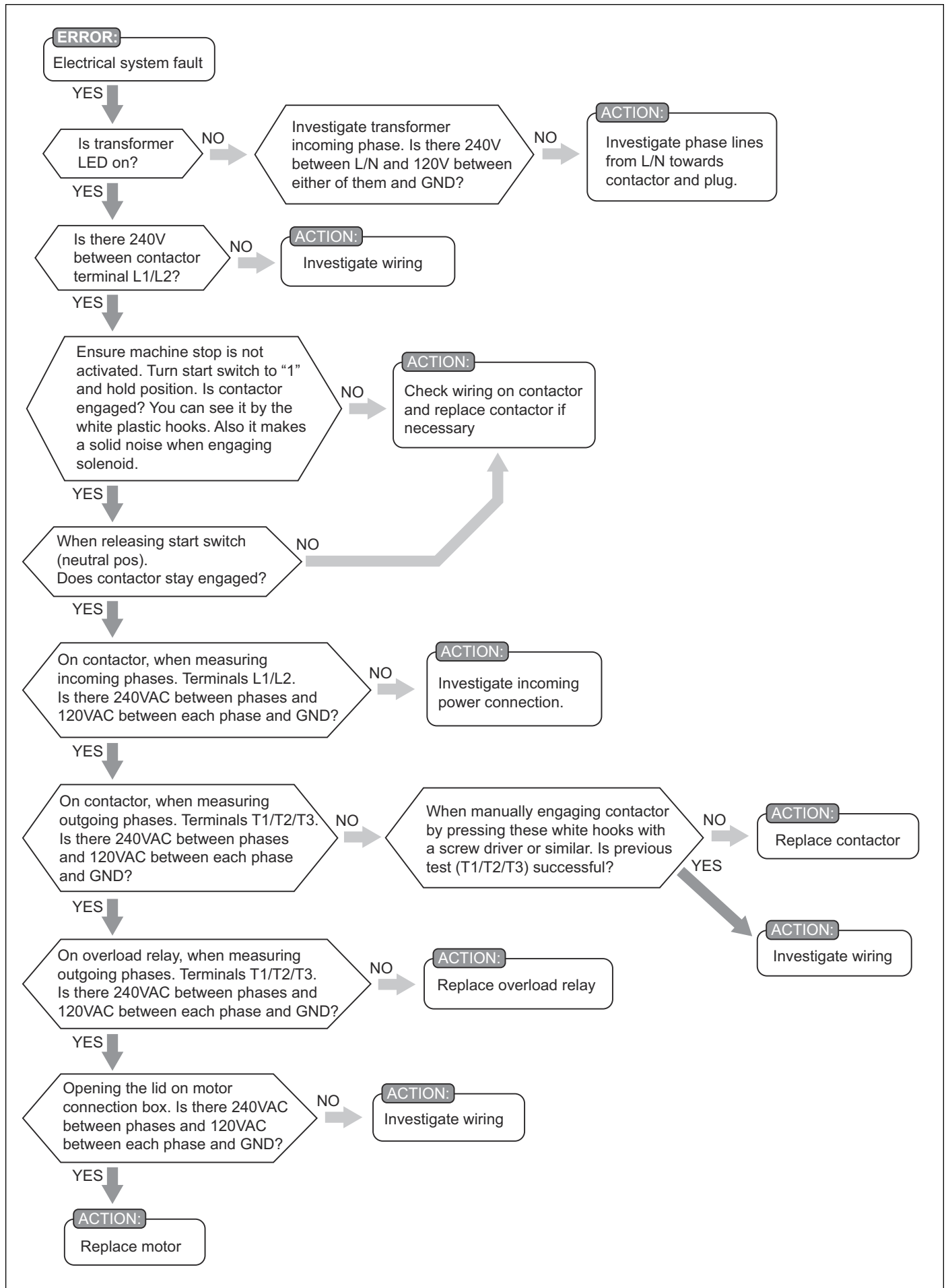


4.3 Electrical system fault (CE)



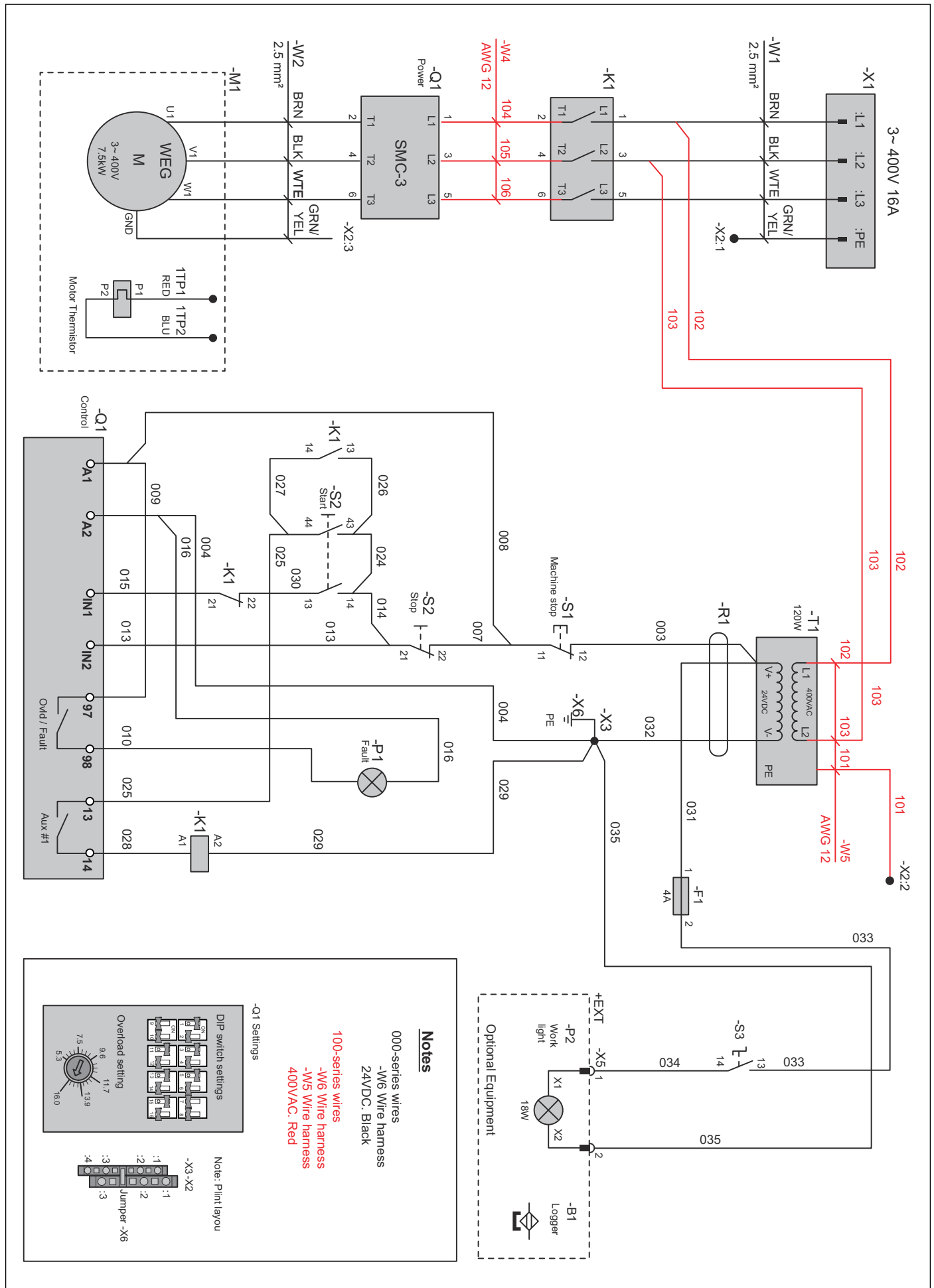


4.4 Electrical system fault (NA)

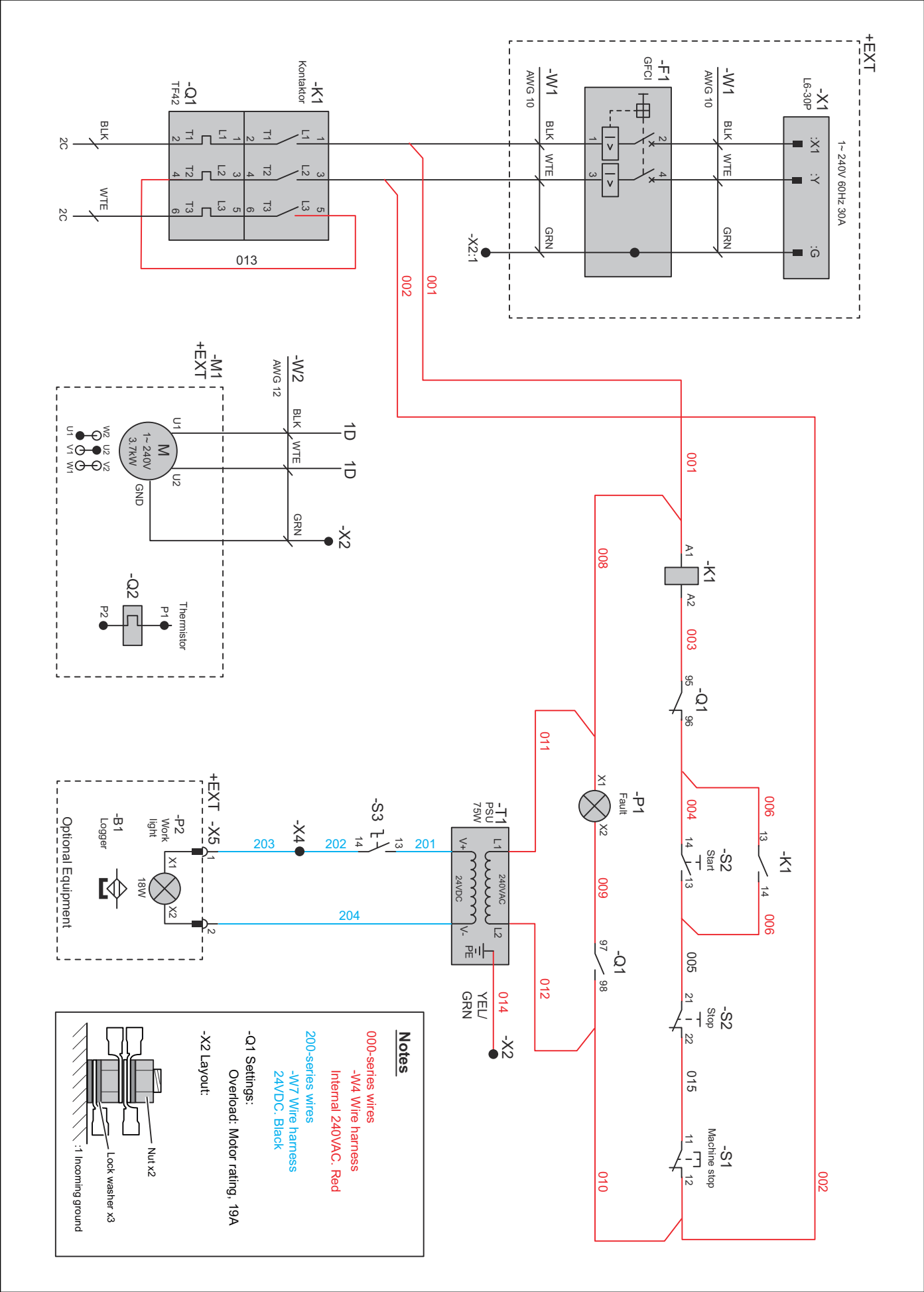


5 Diagrams

5.1 Wiring diagram, electrical enclosure (CE)



5.2 Wiring diagram, electrical enclosure (NA)





www.husqvarna.com

1143059-26

2022-03-22