

## SB, Hydraulic motor studs snap off, CRT 60, 2024-03

### SYMPTOM/DESCRIPTION

Due to a new type of studs with larger chamfers used by the supplier on the CRT 60 hydraulic motor, a gap between the motor flange and the stub shaft can occur (figure 1), causing the studs to snap off.



Fig. 1: New type of motor flange stud with increased chamfer.

### AFFECTED UNITS

All the machines SKU 970461801 from SN 1398940001 up to SN 1406956001.

### CORRECTIVE ACTION

A new revision of stub shaft 599062901 with chamfered holes is introduced.

## PROCEDURE

Check if there is a gap between the hydraulic motor flange and the stub shaft on both sides of the machine. Try to insert the thinnest feeler gauge from the set between the hydraulic motor flange and the stub shaft (figures 2 – 4).

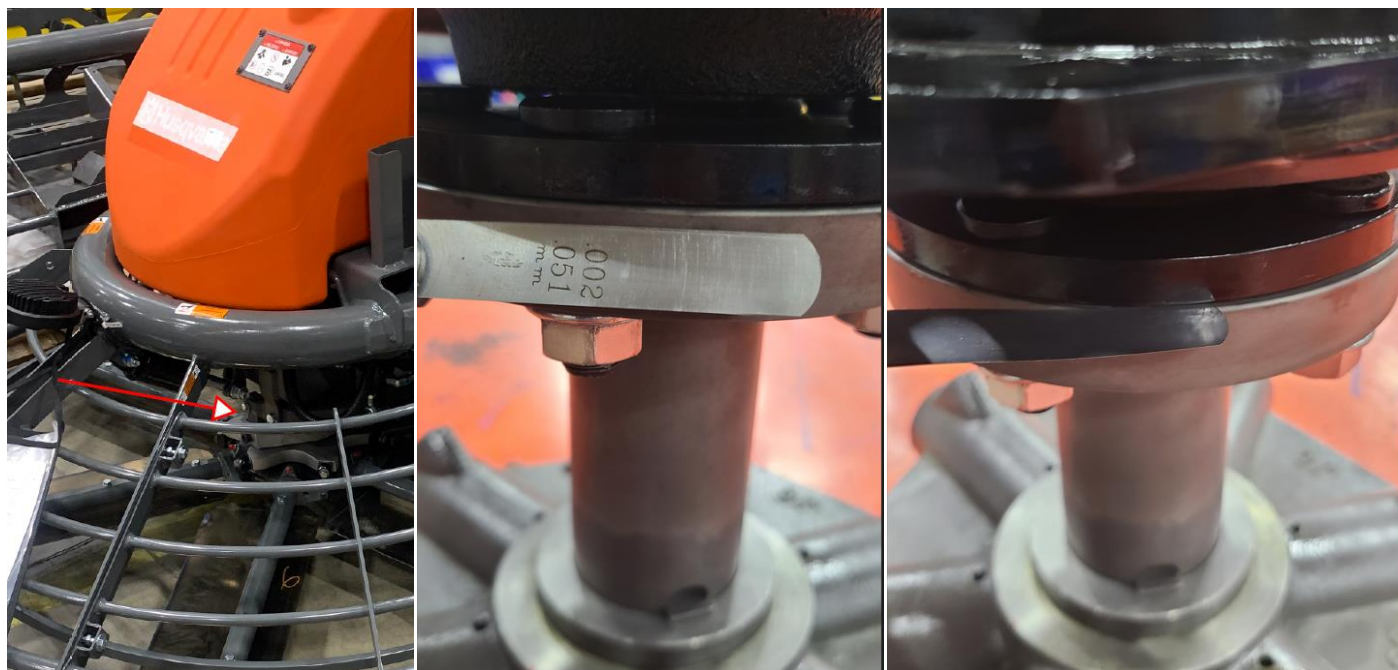


Fig. 2 - 4: Check if there is a gap between the hydraulic motor flange and the stub shaft.

Try at several points along the diameter of the flange.

The gauge should not enter between the parts.

If the gauge is possible to insert, then change or modify the shaft 599062901.

Modification should be done by using 60° countersink drill bit until each hole diameter is equal or slightly bigger than 19.85 mm, see figure 5.

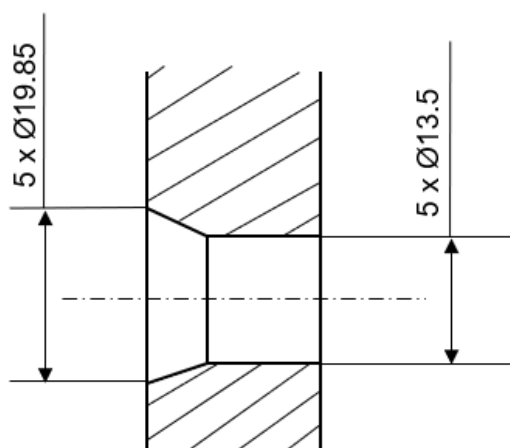


Fig. 5: Use a 60° countersink drill bit to make diameter equal or slightly bigger than 19.85 mm.

### PARTS INFORMATION

Order part no. 599062901 if needed.

Check the local stock, all parts of revision A (figure 6) should be scrapped or modified.

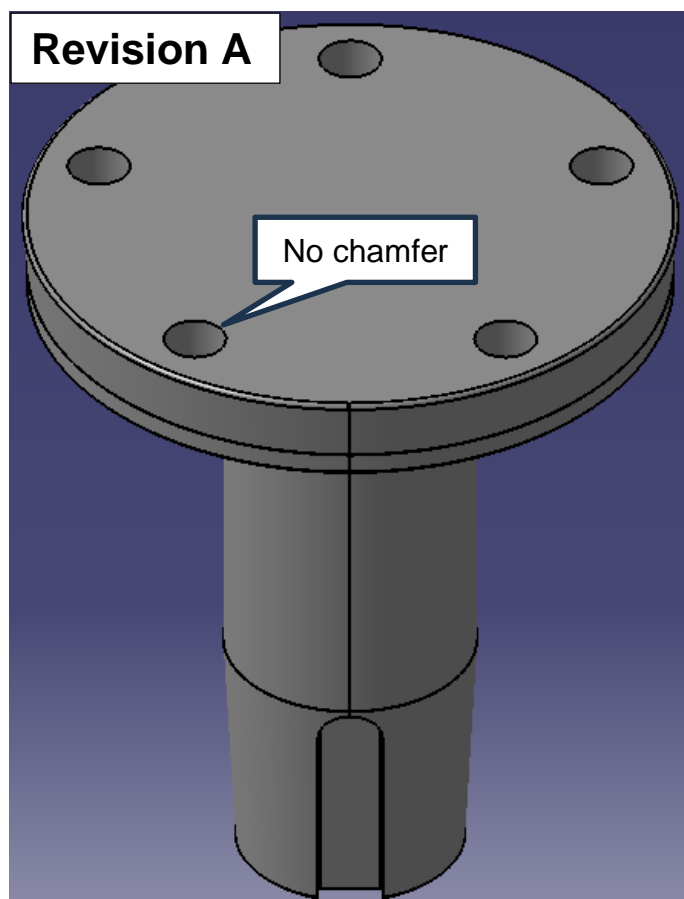


Fig. 6: Revision A, old revision with straight holes.

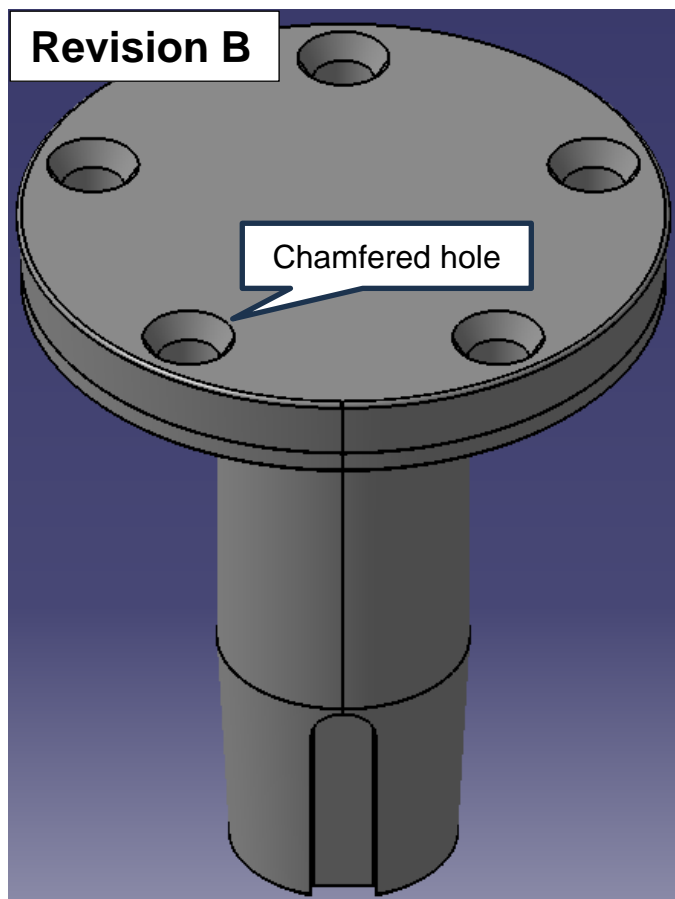


Fig. 7: Revision B, new revision with chamfered holes.

### WARRANTY INFORMATION

The normal warranty policy applies.

#### Revision History

Rev.	Date	Order id.	Description
A	2024-03	00040670	Created