

## SB, New motor variant, K 1 PACE, 2022-06

### SYMPTOM/DESCRIPTION

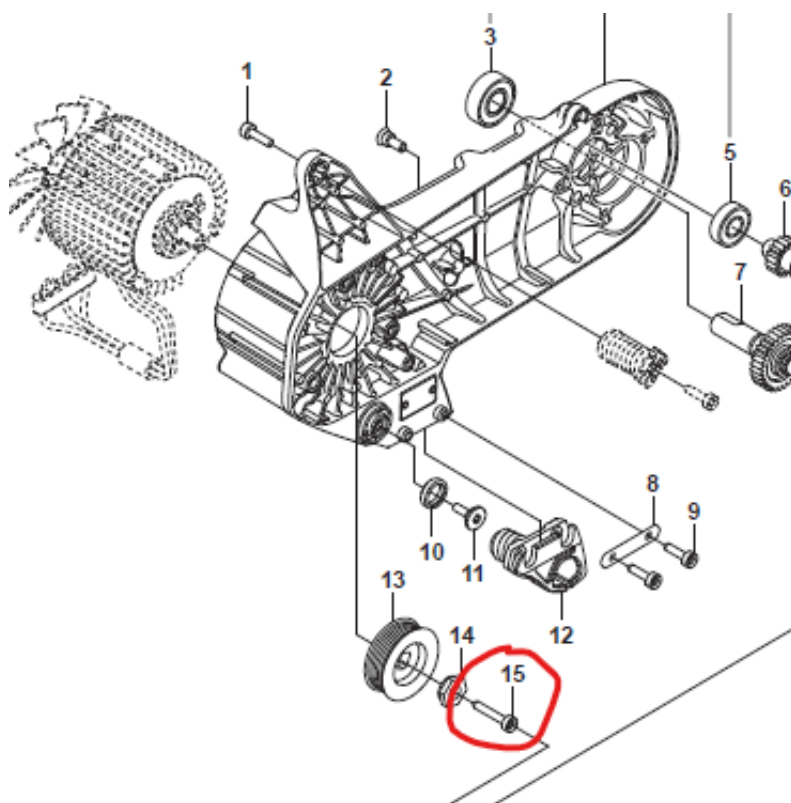
We have introduced a new motor with a M6 hole in the spindle, replacing the earlier version which had a M5 hole. When the motor is changed on a unit before the specified serial number in *Affected units*, new SCREW 544218420 is needed to hold the PULLEY. Old and new SCREWS are also used elsewhere so they should not be superseded or removed from any systems.

### AFFECTED UNITS

K 1 PACE. Implementation made from serial number 20221100001 and onwards.

### WARRANTY INFORMATION

The normal warranty policy applies.



### PARTS INFORMATION

PART NAME	OLD PART No	NEW PART No
MOTOR	595871401	595871402
SCREW	503215330	Used elsewhere
SCREW	Already exist	544218420

### Revision History

Rev.	Date	Order id.	Description
A	2022-06	00020635	Created