

## SB, Gearbox update, DM230, 2015-11

This SB replaces “*B1500031, Gearbox update, DM230*”

### SYMPTOM/DESCRIPTION

Due to gearbox updates on the DM230, a gearbox kit has been introduced to support the spare parts need for older DM230's until Serial Number **20152200001**. Parts for the gearbox as well as the Gear Housing/Gear Housing Cover and Cover castings have changed to give improved overall robustness and improved gearbox sealing:

- The thread on the clutch has changed to a finer pitch to enable better adjustment of the slip clutch torque.
- The plastic motor housing has changed to give better motor alignment and a more robust solution.
- The air conductor has changed to allow better heat tolerance.
- An updated Sealing between the Gear Housing and Gear Housing Cover will give a better overall seal.

1. Spindle shaft and key
2. Gear housing
3. Clutch assembly
4. O-ring
5. Gearbox cover
6. Motor housing cover
7. Air conductor
8. Hand guard assembly



Figure 1. New parts, DM230 ser.no. 20152200001 and forward.

## AFFECTED UNITS

All DM230 variants affected.

Serial Number	New parts implemented
20152200001	Spindle shaft and parallel key Gear housing Clutch assembly Motor Housing Cover Gear Housing Cover Air Conductor Hand Guard Assembly
20153300021	Slip Clutch

Table 1. Affected variants of DM230.

## PARTS INFORMATION

See table 2 below for more details about replacement of gearbox parts on DM230's with serial numbers *before* 2015 2200001.

The parts listed as "new part in kit" are included in the gearbox kit art no. 588 61 30-01.

New Part no.	New part in kit, qty	Old Part no.	Part name	Comment
588 61 30-01		N/A	Gearbox kit	Part numbers included listed in Column "New part in kit" with quantity included in kit.
588 61 31-01	X, 1	544 11 20-01	Gear housing including bushing	To replace old part, the whole kit art no. 588 61 30-01 is needed
		525 85 06-01	Gear Housing including bushing	To replace old part, the whole kit art no. 588 61 30-01 is needed
525 48 10-01	X, 1	525 48 10-01	Oil plug	Use up Old Part No. and Substitute
586 79 60-01	X, 1	544 12 50-01	Gear housing cover	To replace old part, the whole kit art no. 588 61 30-01 is needed
586 81 21-01	X, 1	576 76 82-01	Gearbox sealing	Old part valid until serial numbers until 20152200001
N/A		510 18 04-01	Gasket	Old part no. valid for serial numbers until 20152200001
586 79 62-01	X, 1	544 12 43-01	Cover	Old part valid until serial number 20152200001
586 91 18-01		503 26 30-01	Gearbox, water sealing	Old part no. valid for serial numbers until 20152200001
586 91 21-01	X, 1	740 43 11-00	O-Ring	Old part no. valid for serial numbers until 20152200001
586 91 18-01	X, 1	503 26 30-01	O-Ring	Old part no. valid for serial numbers until 20152200001
N/A		510 44 09-01	Gasket	Old Part no. valid for serial numbers until 20152200001
720 13 09-51	X, 2	N/A	Parallel pin	New part
725 53 37-55	X, 3	503 20 07-82	Screw IHSCM	Old part no. valid for serial numbers until 20152200001
586 06 81-01	X, 2	525 45 44-01	Radial sealing	Two new parts are needed to replace one old part. No. direct replacement in REX/Web Order.

New Part no.	New part in kit, qty	Old Part no.	Part name	Comment
586 91 91-01	X, 1	544 12 29-01	Air conductor	Old part number is valid for Serial Numbers until 20152200001
586 79 62-01	X, 1	544 12 43-01	Motor housing cover	To replace old part, the whole kit art no. 588 61 30-01 is needed.
505 44 13-02		505 44 13-01	Hand Guard Assembly	Use up Old Part No. and Substitute
N/A	X, 1	735 31 40-10	Circlip	Old Part No. used in Kit
N/A	X, 1	738 22 99-27	Bearing, Gearbox	Old Part No. used in Kit
N/A	X, 1	738 21 05-14	Bearing, Spindle Shaft	Old Part No. used in Kit
N/A	X, 1	503 26 30-29	O-ring, Cover(586 79 62-01)	Old Part No. used in Kit
N/A	X, 1	525 47 63-02	Screw, Handle	Old Part No. used in Kit
N/A	X, 1	501 00 83-01	Sealing	Old Part No. used in Kit
N/A	X, 1	501 00 84-01	Spring Washer	Old Part No. used in Kit
N/A	X, 1	735 31 28-10	Circlip	Old Part No. used in Kit
N/A	X, 1	525 40 14-01	Gear Lever Assy	Old Part No. used in Kit
N/A	X, 1	738 22 99-27	Ball Bearing	Old Part No. used in Kit
N/A	X, 1	575 98 49-01	Ball Bearing	Old Part No. used in Kit
	X, 2	503 20 74-40	Screw M5x40	New Part No. in Kit, Old Part No. number valid for serial numbers until 20152200001
587 36 69-02		587 36 69-01	Clutch Assembly	Use up old part and substitute
587 36 25-02		587 36 25-01	Clutch Wear Parts	Use up old part and substitute
504 57 11-03		504 57 11-02	Gear Wheel Assy	Use up old part and substitute
525 40 21-02		525 40 21-01	Spindle Shaft 1/2" kit	Use up old part number and substitute
525 40 22-02		525 40 22-01	Spindle Shaft 5/8" kit	Use up old part and substitute
544 38 16-02		544 38 16-01	Parallel key	Old Part No. valid for serial numbers until 20152200001

Table 2. Spare parts updates on DM230 and parts needed for updating machine until ser.no. 20152200001.

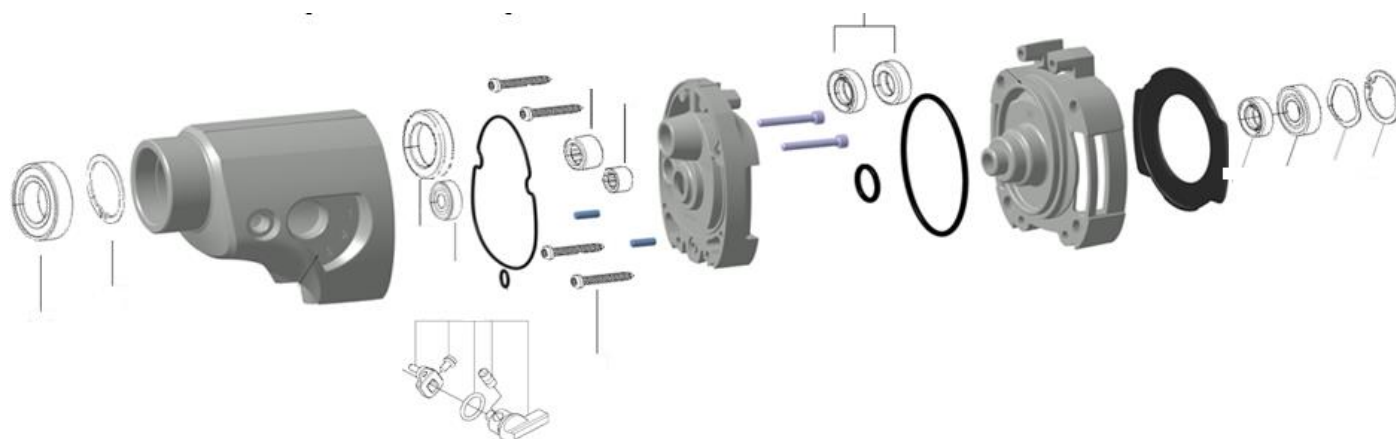


Figure 2. Parts included in Gearbox kit art. no. 588 61 30-01.

## WARRANTY INFORMATION

The normal warranty policy applies.