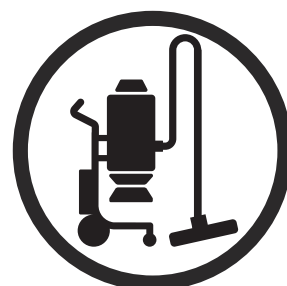


Workshop manual

W 250 P



English

Contents

1 Introduction

| | |
|-------------------------------|---|
| 1.1 Document description..... | 3 |
| 1.2 Target group..... | 3 |
| 1.3 Revisions..... | 3 |
| 1.4 Safety..... | 3 |

2 Safety

| | |
|--|---|
| 2.1 Safety definitions..... | 4 |
| 2.2 General safety instructions..... | 4 |
| 2.3 Grounded product instructions..... | 4 |
| 2.4 Symbols on the product..... | 4 |
| 2.5 Safety instructions for maintenance..... | 4 |

3 Prepare and do servicing on the product

| | |
|-------------------------------|---|
| 3.1 Maintenance schedule..... | 5 |
| 3.2 To clean the product..... | 5 |

4 Servicing data

| | |
|-------------------------|---|
| 4.1 Motor top..... | 6 |
| 4.2 Tank and frame..... | 7 |

5 Function overview

| | |
|---|---|
| 5.1 Type plate/Product serial number..... | 8 |
| 5.2 Type plate overview..... | 8 |

6 Troubleshooting

| | |
|-----------------------------------|---|
| 6.1 Troubleshooting schedule..... | 9 |
|-----------------------------------|---|

7 Product overview for repair and servicing

| | |
|---|----|
| 7.1 Product overview..... | 10 |
| 7.2 To clean and examine the product parts..... | 10 |

8 Repair instructions

| | |
|---------------------------|----|
| 8.1 Motor top..... | 11 |
| 8.2 Pump..... | 12 |
| 8.3 Float device..... | 15 |
| 8.4 Waste container..... | 16 |
| 8.5 Frame and wheels..... | 18 |

9 Transportation, storage and disposal

| | |
|--|----|
| 9.1 Transportation of the product..... | 19 |
| 9.2 Storage of the product..... | 19 |
| 9.3 Disposal..... | 19 |

10 Diagrams

| | |
|--|----|
| 10.1 Electrical schedule, EU version with filter 590427201..... | 20 |
| 10.2 Electrical schedule, EU version with filter 548068901..... | 21 |
| 10.3 Electrical schedule, US version..... | 22 |

11 Technical data

| | |
|--------------------------|----|
| 11.1 Technical data..... | 23 |
|--------------------------|----|

1 Introduction

1.1 Document description

This manual gives a full description of how to do maintenance and repair on the product. It also gives safety instructions that the personnel must obey.

1.2 Target group

This manual is for personnel with a general knowledge of how to do repair and do servicing. All personnel that do repair or do servicing on the product must read and understand the manual.

1.3 Revisions

Changes to the product can cause changes to the maintenance work and spare parts. Separate information is sent out for each change.

Read the manual together with all received information about changes to maintenance and spare parts for the product.

1.4 Safety



WARNING: All personnel that repair or do servicing on the product must read and understand the safety instructions in this workshop manual.

2 Safety

2.1 Safety definitions

Warnings, cautions and notes are used to point out specially important parts of the manual.



WARNING: Used if there is a risk of injury or death for the operator or bystanders if the instructions in the manual are not obeyed.



CAUTION: Used if there is a risk of damage to the product, other materials or the adjacent area if the instructions in the manual are not obeyed.

Note: Used to give more information that is necessary in a given situation.

2.2 General safety instructions



WARNING: Read the warning instructions that follow before you use the product.

The service center that repairs the product must have safety devices that obey local regulations. Warnings and cautions are used to point out specially important parts of the workshop manual.

2.3 Grounded product instructions



WARNING: Incorrect connection can result in electrical shock. Speak to an approved electrician if you are not sure if your mains outlet is correctly grounded.

Do not do modifications to the power plug from its factory specification. If the power plug or power cord is damaged or must be replaced, speak to your service agent. Obey local regulations and laws.

If you do not fully understand the instructions about the grounded product, speak to an approved electrician.

Use only grounded outdoor extension cables with grounding plugs and grounding outlet that accepts the product power plug.

The product has a grounded power cord and power plug. Always connect the product to a grounded mains outlet. This decreases the risk of electrical shock.

Do not use electrical adapters with the product.

2.4 Symbols on the product



Please read the operator's manual carefully and make sure you understand the instructions before using the product.



Always use an approved breathing mask.



Always use approved ear protection.



Always use approved eye protection.

2.5 Safety instructions for maintenance

- Make sure that the ON/OFF switch is in the OFF position.
- Disconnect the product from the power supply.
- Only use original spare parts.
- Use personal protective equipment.
- Do not use a high-pressure washer to clean the product. Water can go into the product and do damage to the electrical system. Use a moist cloth to clean the product.
- The servicing procedures cause contamination. Dispose all servicing equipment correctly in plastic bags after servicing. Refer to local regulations.

3 Prepare and do servicing on the product

3.1 Maintenance schedule

The maintenance intervals are calculated from daily use of the product. The intervals change if the product is not used daily.

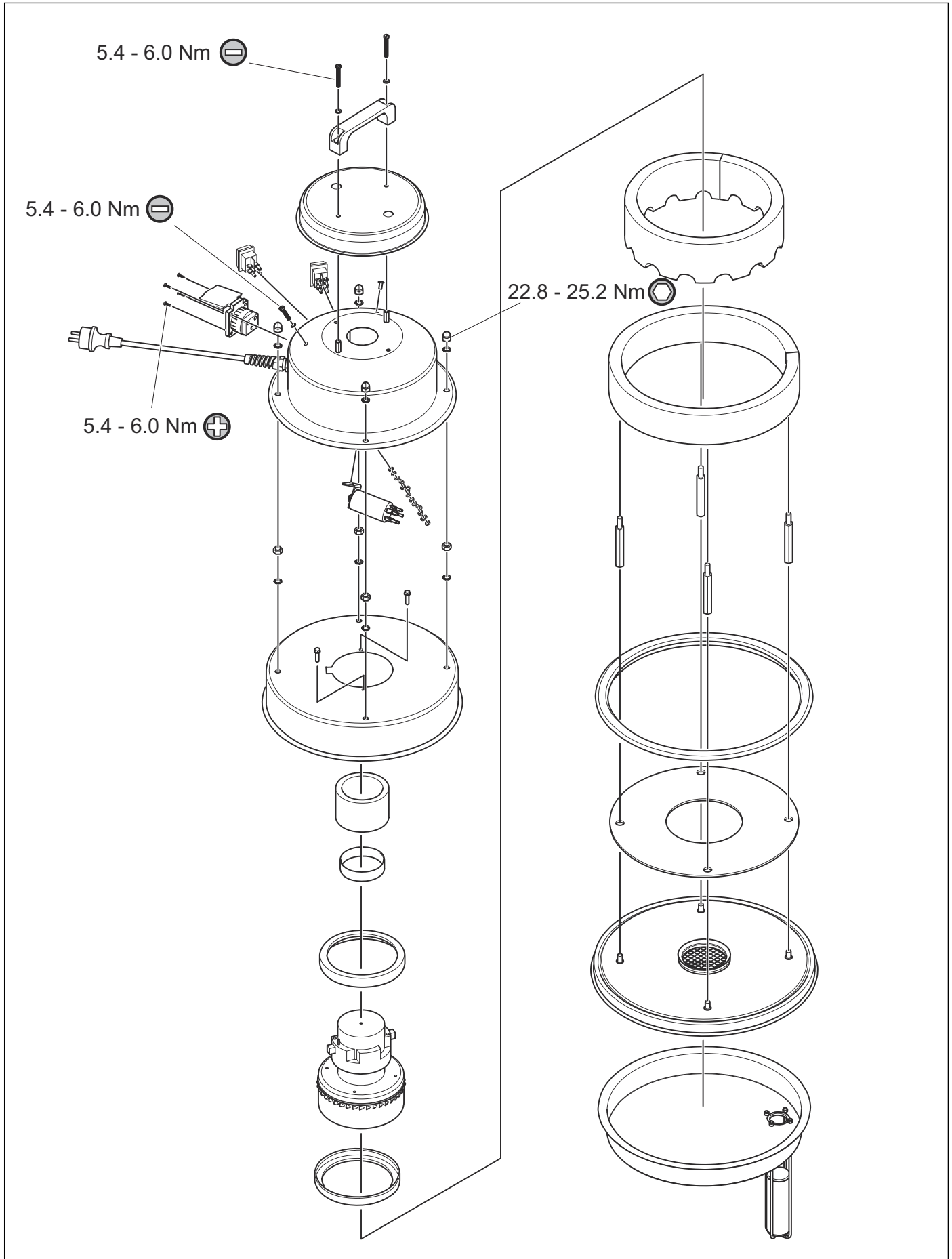
| Maintenance | Before each use | After each use | Daily | Weekly |
|---|-----------------|----------------|-------|--------|
| Do a check of the power cord on the product. | X | | | |
| Do a check of the mains socket. | X | | | |
| Do a check of the power plug on the product. | X | | | |
| If the product has a pump, do a check of the pump power cord. | X | | | |
| If the product has a pump, do a check of the pump power plug. | X | | | |
| If the product has a pump, do a check of the motor top socket. | X | | | |
| Look for signs of wear, damage or loose connections of the controls. | X | | | |
| Clean the container. | | X | | |
| If the product has a pump, flush water through the pump. | | | X | |
| Do a check of the wheels. Look for damage and make sure that the wheels are correctly attached. | | | | X |
| If the product has a pump, do a check of the check valve on the pump. | | | | X |
| Do a check of the hose. | | | | X |
| Do a check of the hose gasket and the hose seal. | | | X | |

3.2 To clean the product

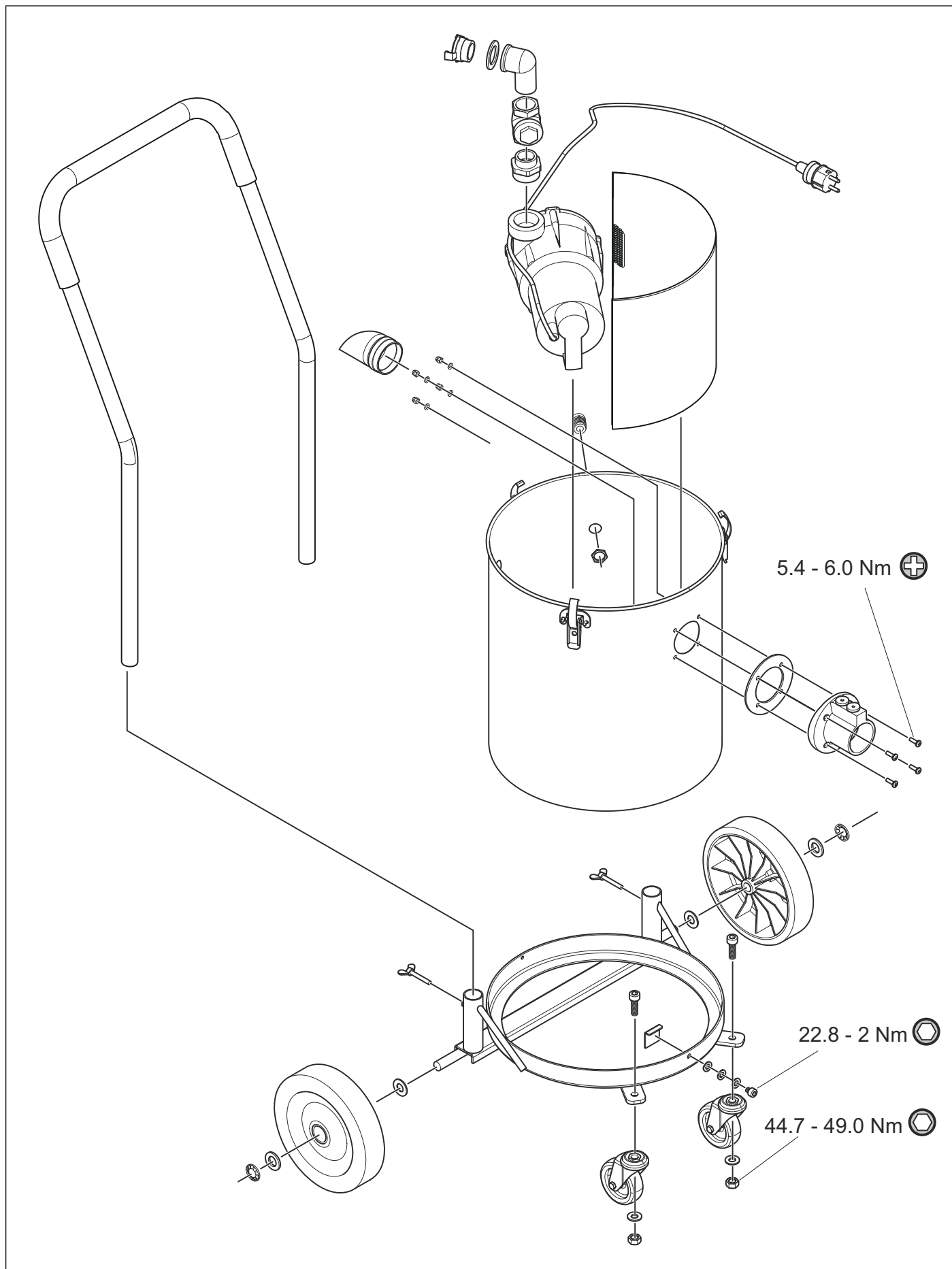
- Clean the external surface with a moist cloth.
- If the product has a pump, flush water through the pump.
- Clean the product in an applicable location.
- Do not use water on electrical components.
- Do not clean the product with high pressure air or water.

4 Servicing data

4.1 Motor top



4.2 Tank and frame

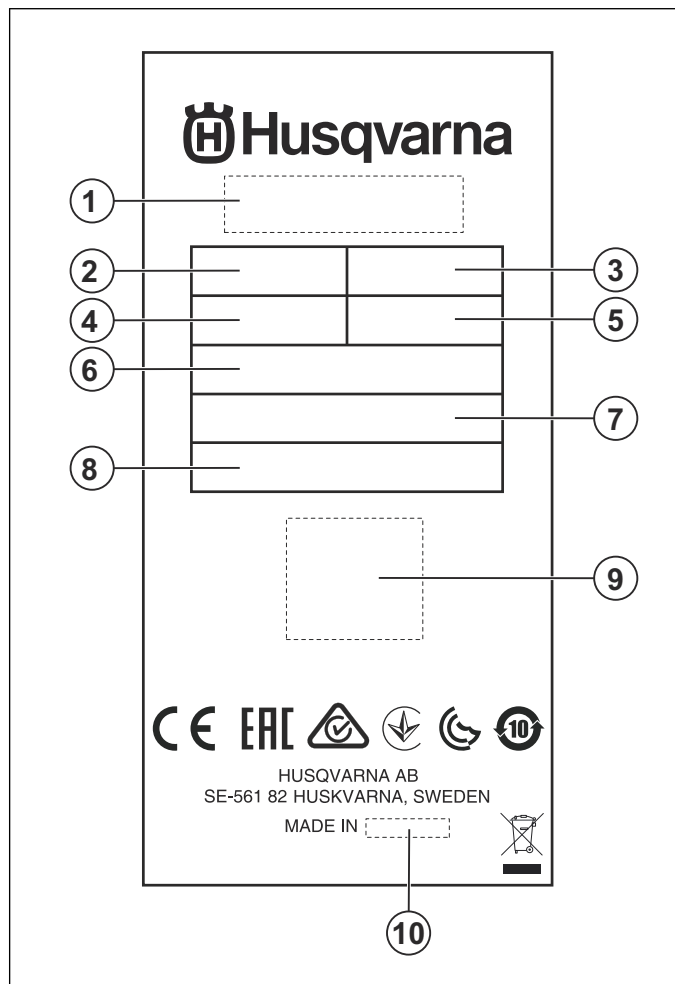


5 Function overview

5.1 Type plate/Product serial number

The product serial number is given on the type plate.
Supply the model name and the article number when
you send an order for spare parts.

5.2 Type plate overview



1. Model
2. Voltage
3. Power
4. Frequency
5. Weight
6. Airflow
7. Serial number
8. Part number
9. Scannable code
10. Country of production

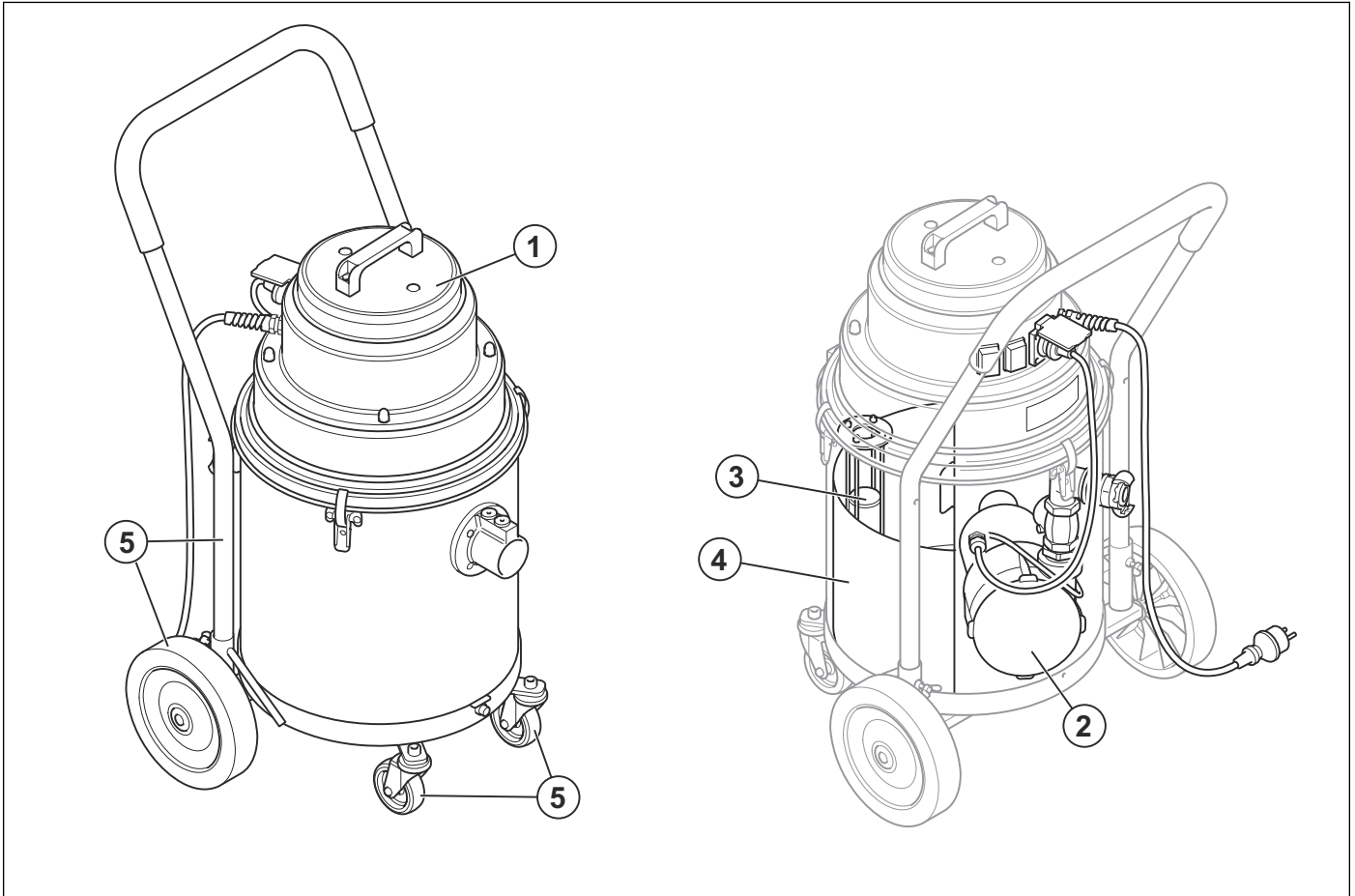
6 Troubleshooting

6.1 Troubleshooting schedule

| Problem | Cause | Solution |
|--|--|---|
| The motor does not start. | There is no power supply. | Connect the product to a power source. |
| | The power cord is defective. | Replace the power cord. |
| | The ON/OFF switch is defective. | Replace the ON/OFF switch. |
| The motor stops immediately after you start the product. | There is an incorrect fuse. | Connect to correct fuse. |
| | There is short circuit in a cable or the product. | Do servicing on the product. |
| The motor operates but there is no suction. | The hose is not connected. | Connect the hose. |
| | The hose is clogged or blocked. | Clean the hose. |
| | The float device causes a blockage of the airflow. | Do a check of the water level and damage on the float device. |
| The motor operates but the suction is unsatisfactory. | The hose is damaged. | Replace the hose. |
| | The top cover is loose. | Adjust the top cover. |
| | There is dirt on the lid at the bottom of the container. | Clean the lid at the bottom of the container. |
| | The gaskets are defective. | Replace the defective gaskets. |
| | The check valve is blocked or defective | Clean or replace the check valve. |
| The pump operation is unsatisfactory. | The pump is blocked. | Clean the pump and do a check of the valve hose. |
| Unusual noise. | N/A | Do servicing on the product. |

7 Product overview for repair and servicing

7.1 Product overview



1. Motor top
2. Pump
3. Float device
4. Waste container
5. Frame and wheels

7.2 To clean and examine the product parts

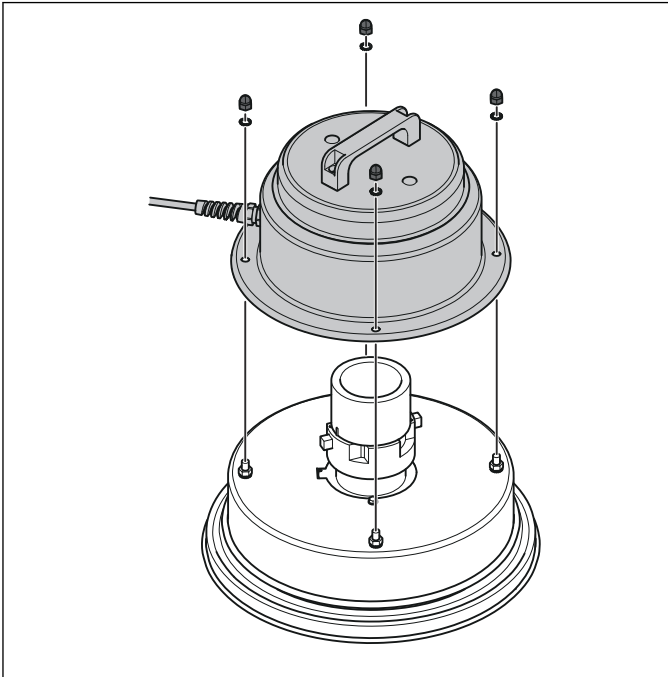
- Clean and examine all parts fully. You find more instructions in the chapter for each part if special tools or procedures are necessary.
- Replace damaged parts.
- Always use original spare parts.

8 Repair instructions

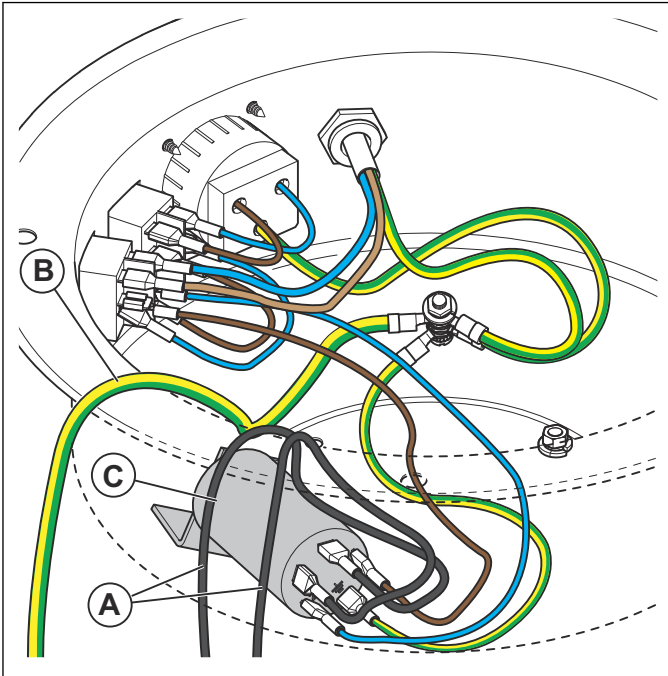
8.1 Motor top

8.1.1 To disassemble the motor

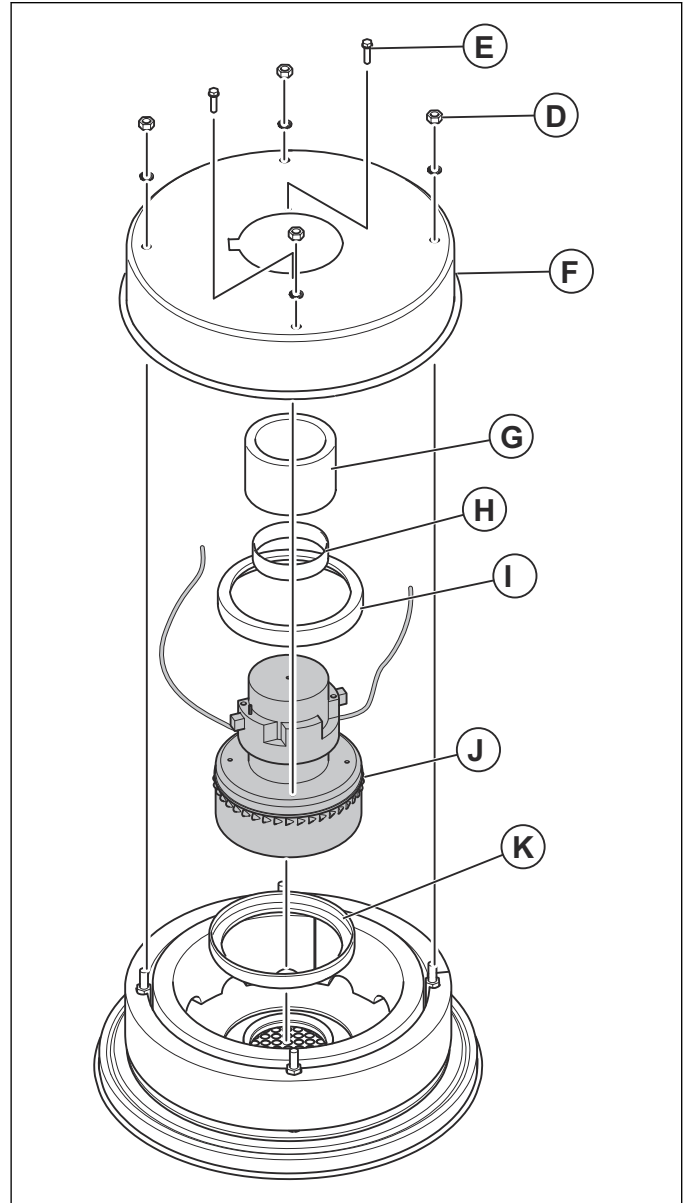
1. Remove the screws and washers. Lift the motor housing.



2. Remove the 2 motor cables (A) from the electrical filter (C). Remove the motor ground cable (B) from the motor housing.



3. Remove the nuts (D) and screws (E).



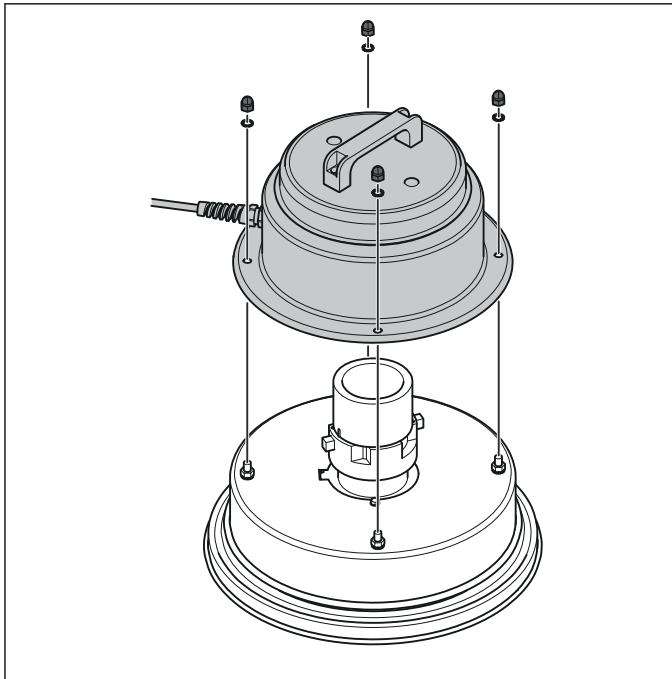
4. Remove the motor cover (F).
5. Remove the seals (G, H and I).
6. Remove the motor (J) and the seal (K).

8.1.2 To install the motor

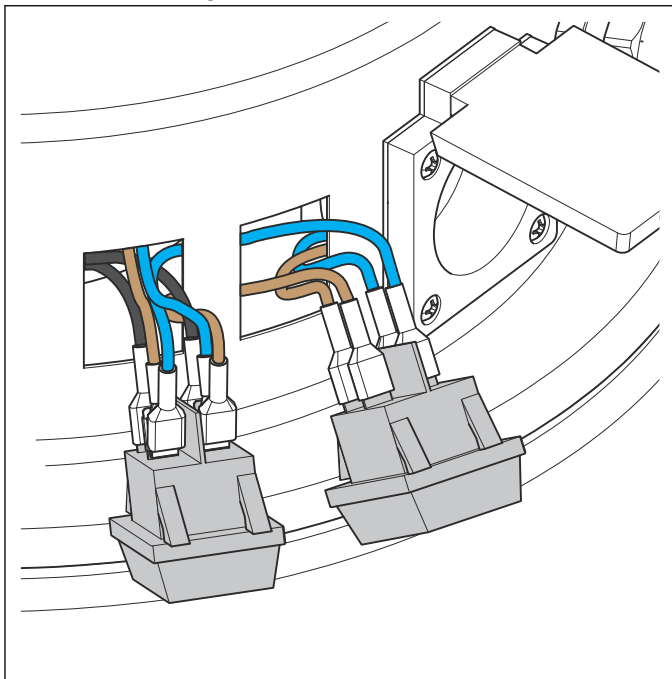
- Install the motor in the opposite sequence to *To disassemble the motor on page 11.*

8.1.3 To remove the ON/OFF switches

1. Remove the screws and washers from the motor housing.



2. Remove the motor housing.
3. Push the ON/OFF switches out of the sockets on the motor housing.



4. Make a note of the positions of the cables on the ON/OFF switches.
5. Disconnect the cables from the ON/OFF switches.
6. Remove the ON/OFF switches.

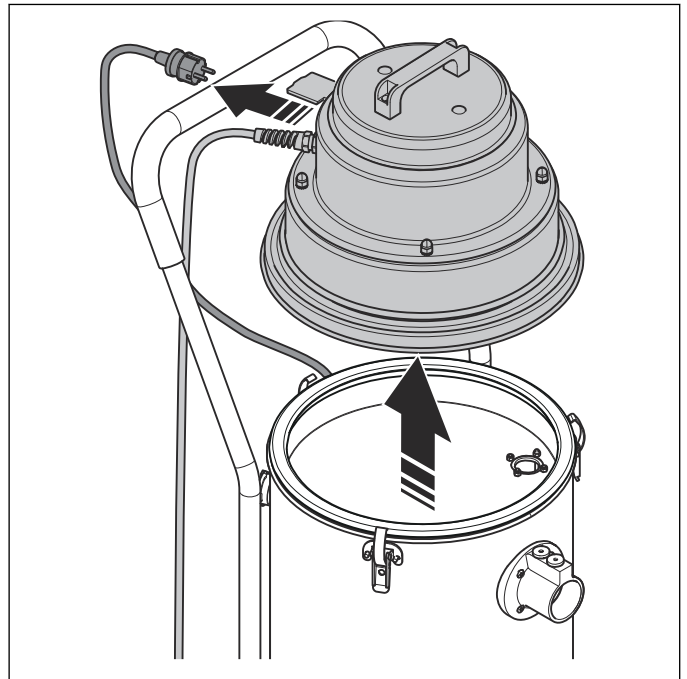
8.1.4 To install the ON/OFF switches

- Install the ON/OFF switches in the opposite sequence to *To remove the ON/OFF switches on page 12*.

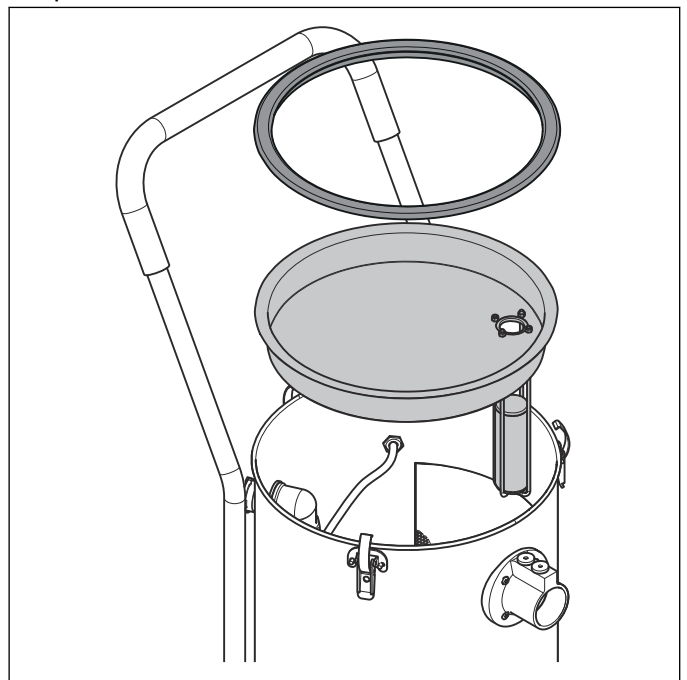
8.2 Pump

8.2.1 To remove the pump

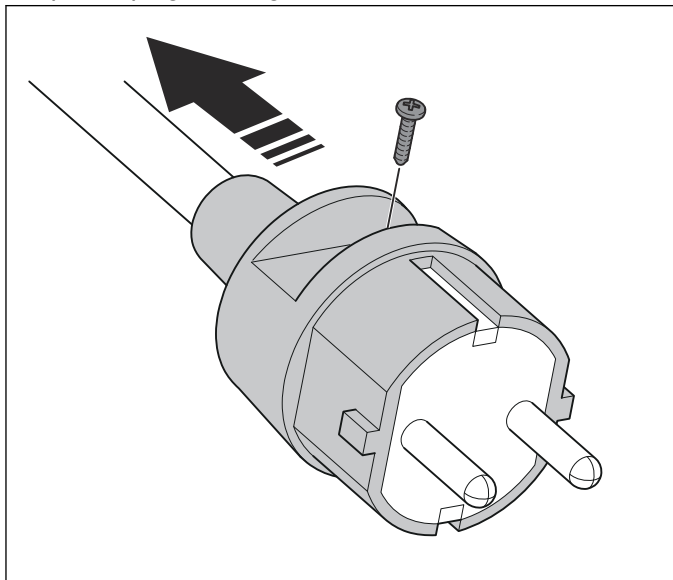
1. Disconnect the power cord from the motor housing.
2. Unlock the clamps. Remove the motor housing from the product.



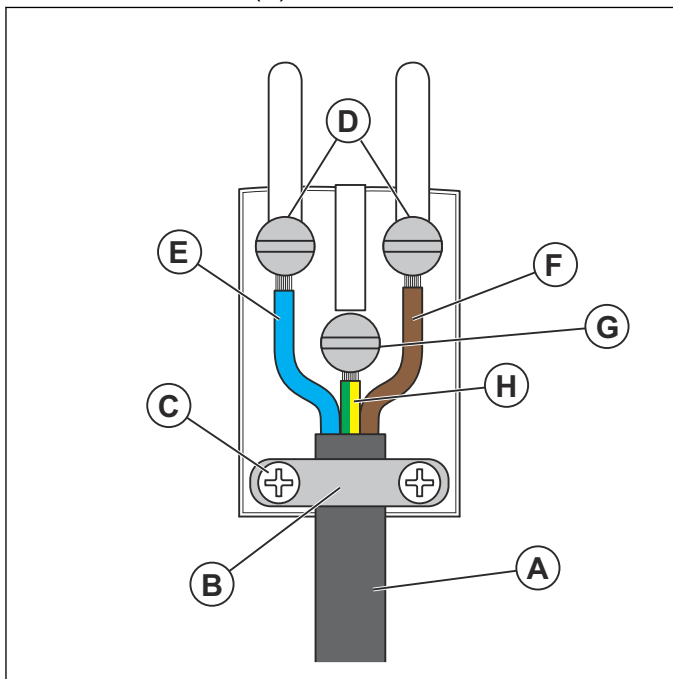
3. Remove the float plate and the seal from the product.



4. Remove the screw from the power plug. Pull the power plug housing rearward.

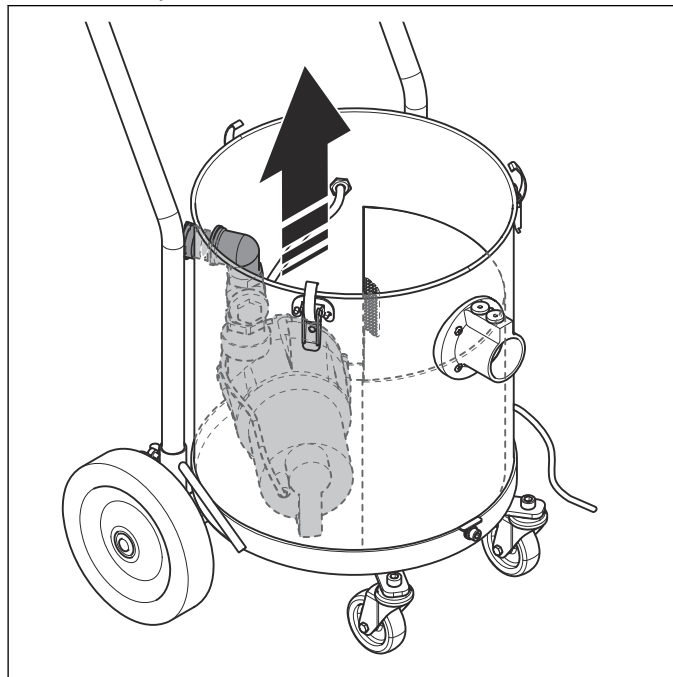


5. Loosen the screw (C) and turn the cable plate (B) to loosen the cable (A).

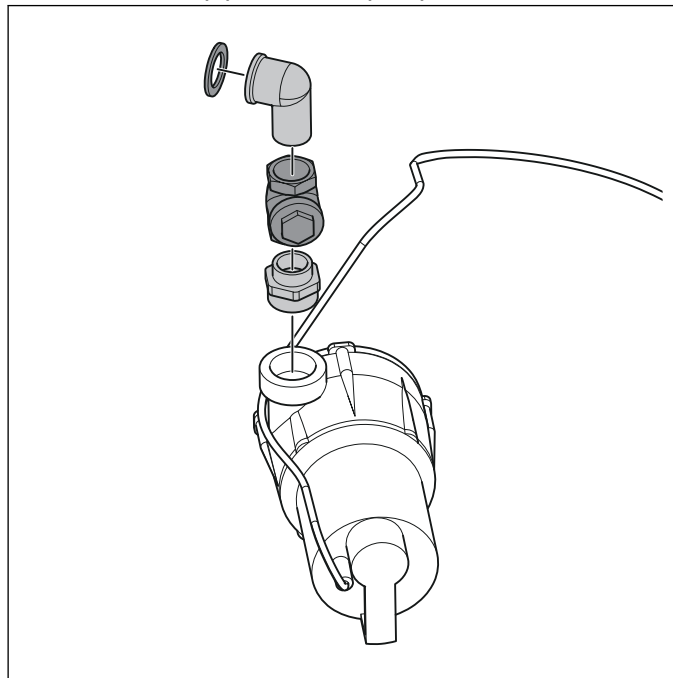


6. Loosen the screws (D and G) and disconnect the wires (E, F and H).
7. Remove the cable from the power plug housing and pull the cable through the hole in the tank.

8. Loosen the pipe from the outlet. Remove the pump from the product.

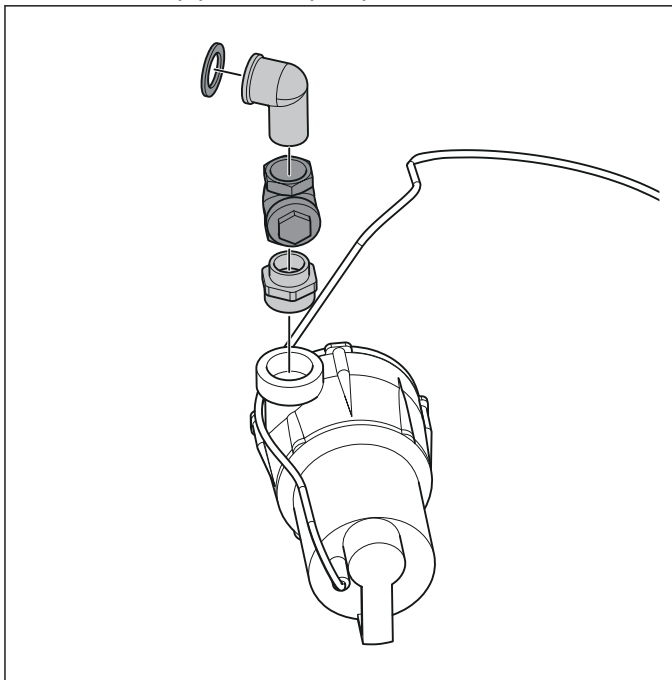


9. Remove the pipe from the pump.

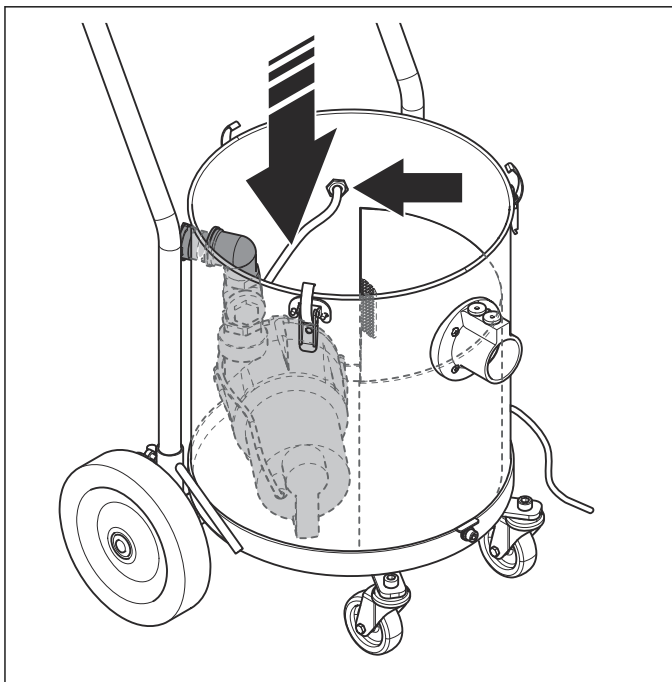


8.2.2 To install the pump

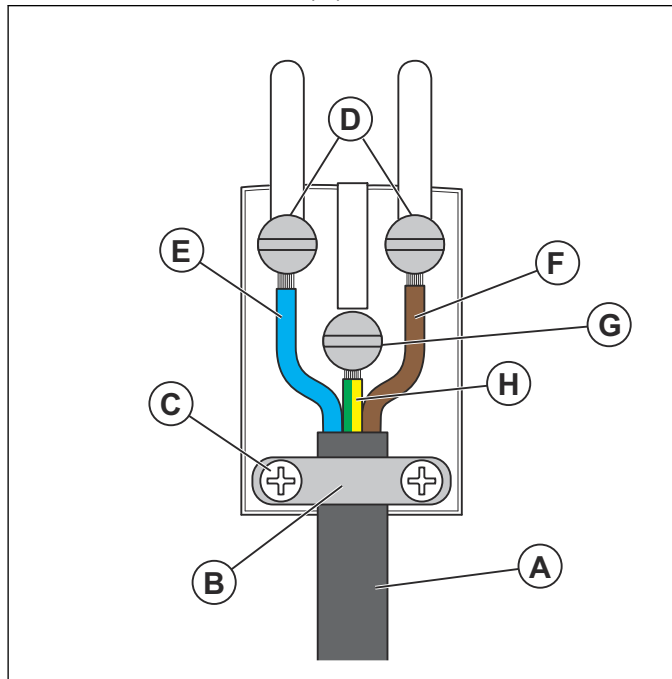
1. Attach the pipe to the pump.



2. Put the pump into the tank. Attach the pipe to the outlet. Pull the pump power cord through the hole in the tank.

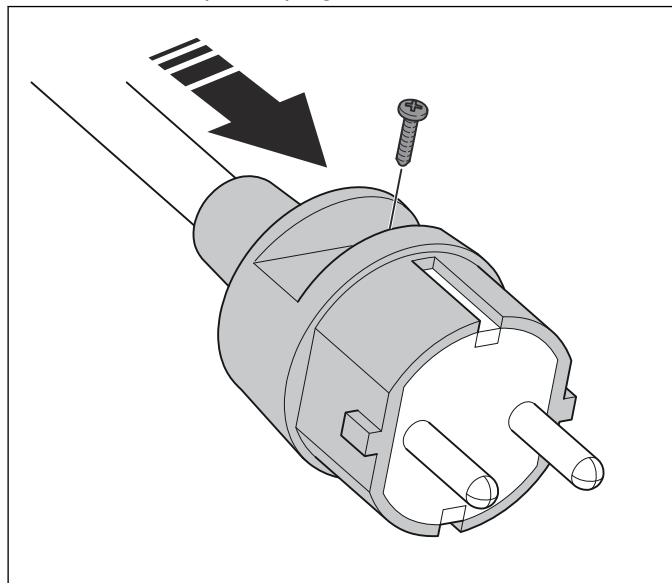


3. Connect the wires (E and F) to the power plug. Attach the screws (D). Connect the ground wire (H) and attach the screw (G).

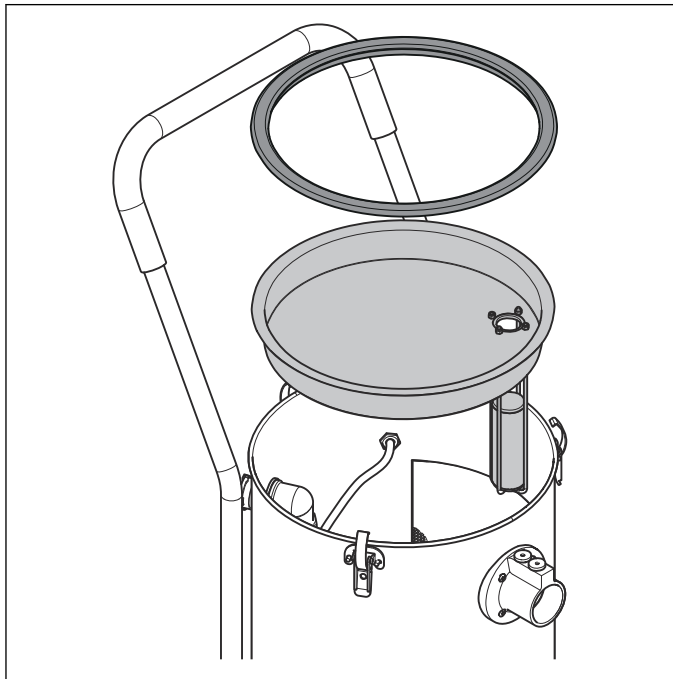


4. Attach the cable (A), turn the cable plate (B) and attach the screw (C).

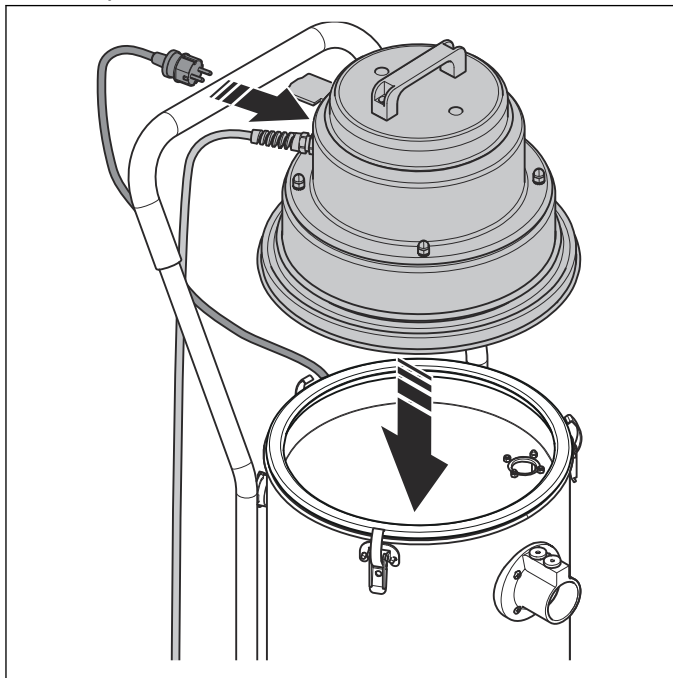
5. Push the power plug housing forward. Attach the screw to the power plug.



6. Attach the float plate and seal to the product.



7. Attach the motor top to the product. Lock the clamps.

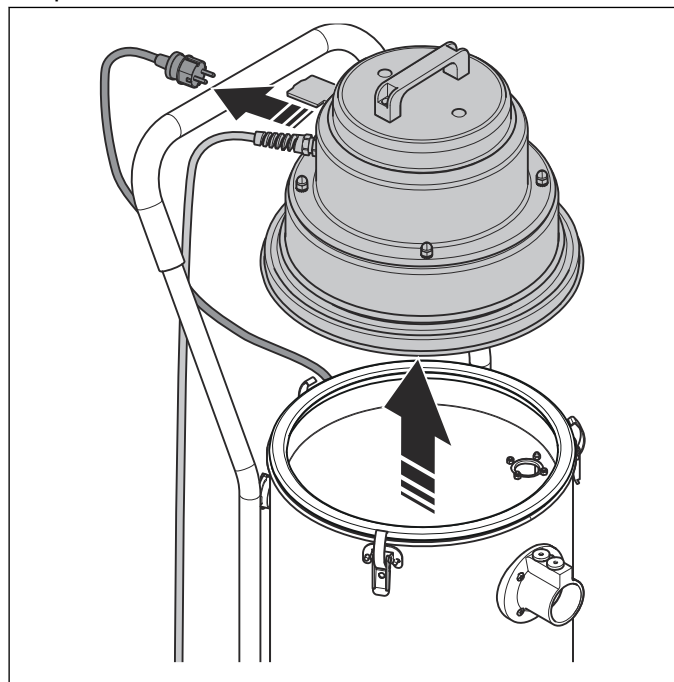


8. Connect the pump power cord to the motor housing.

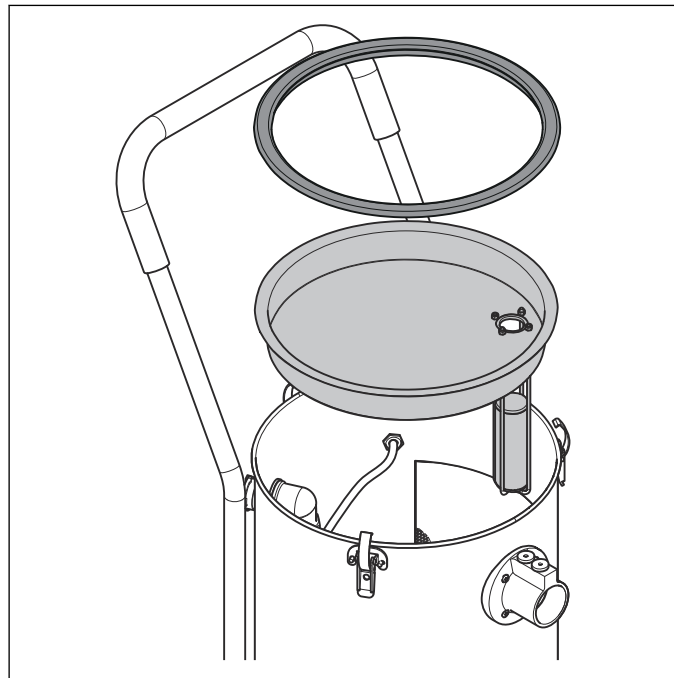
8.3 Float device

8.3.1 To disassemble the float device

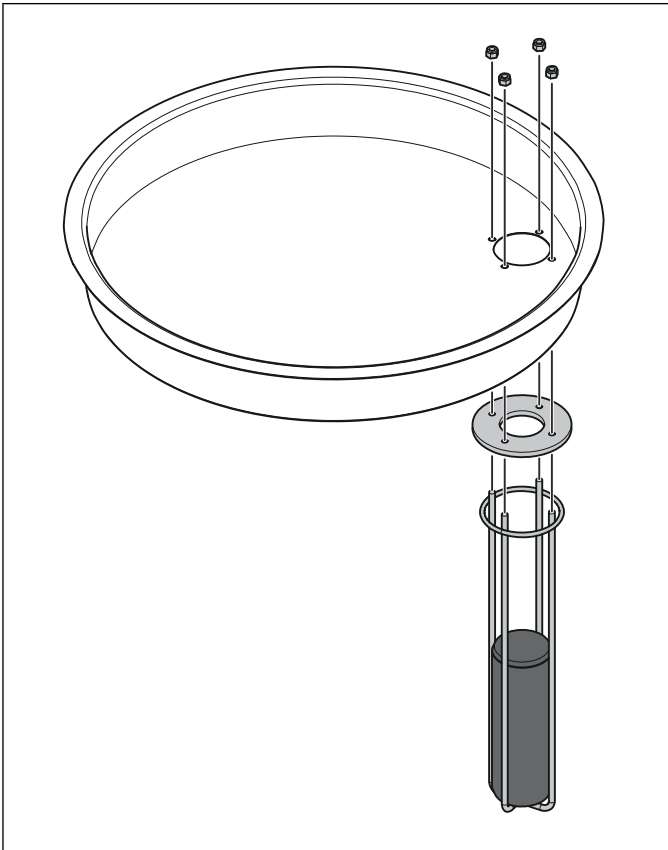
1. Disconnect the power cord from the motor top.
2. Unlock the clamps. Remove the motor top from the product.



3. Remove the float plate and the bearing from the product.



4. Remove the screws from the float device and remove the float device.



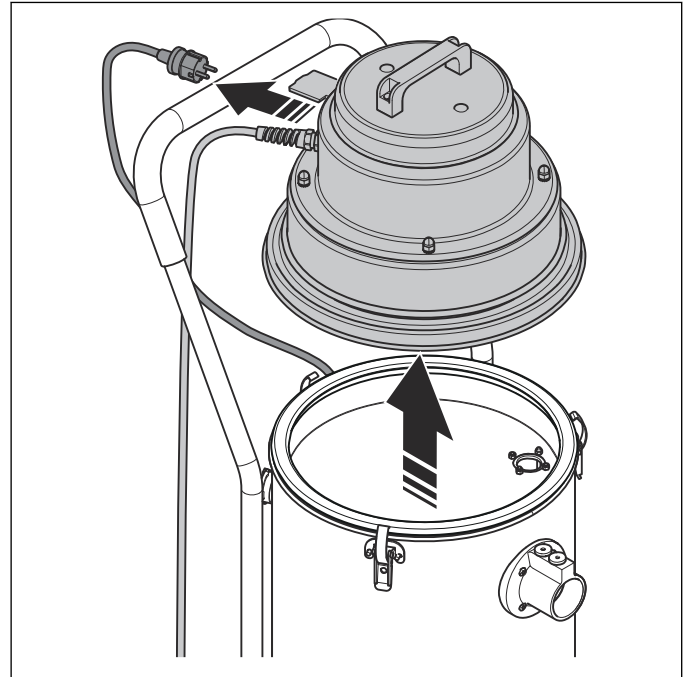
8.3.2 To assemble the float device

- Install the float device in the opposite sequence to *To disassemble the float device on page 15.*

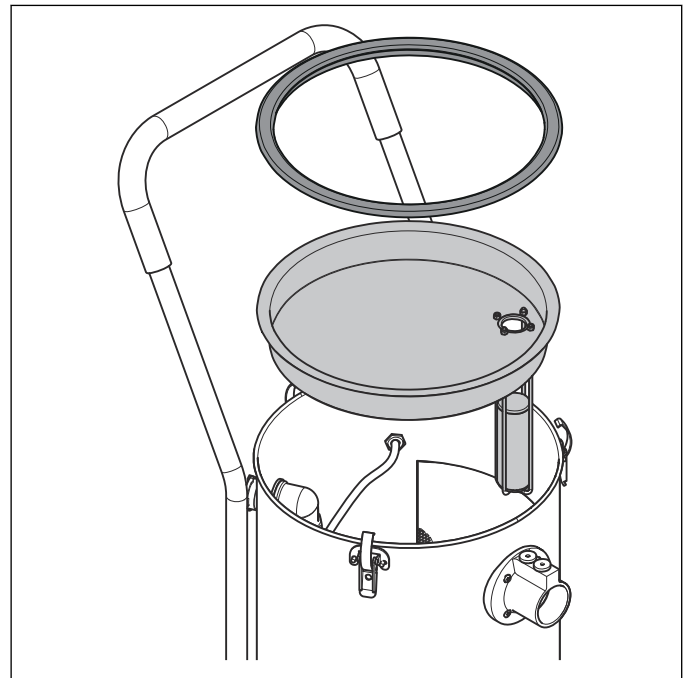
8.4 Waste container

8.4.1 To disassemble the waste container

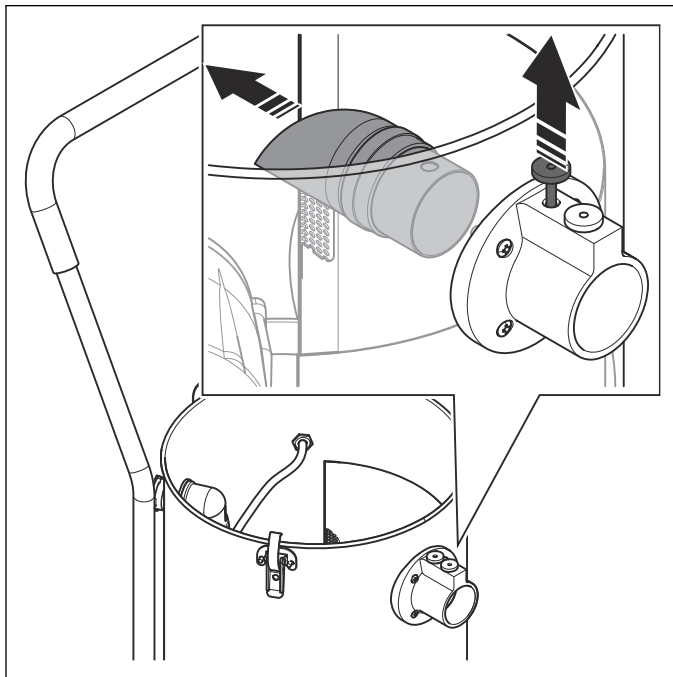
1. Disconnect the power cord from the motor housing.
2. Unlock the clamps. Remove the motor housing from the product.



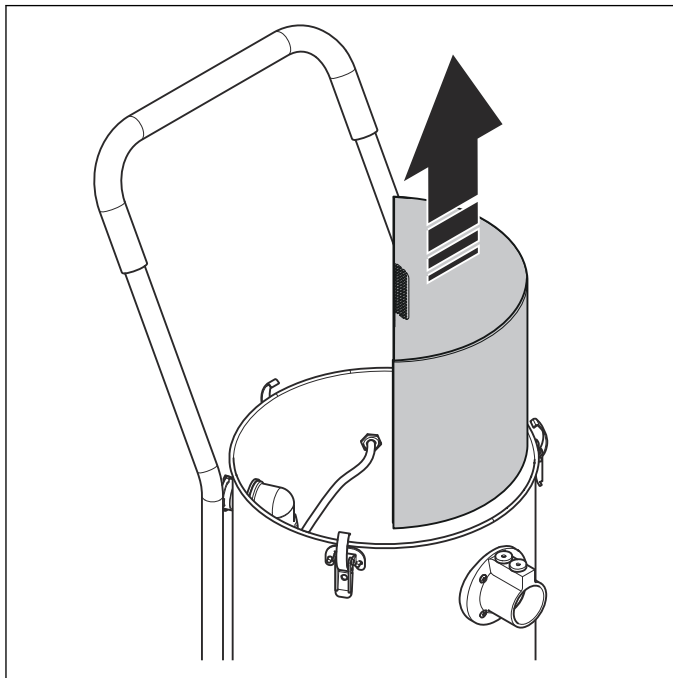
3. Remove the float plate and the bearing from the container.



4. Pull the lockpin and remove the inlet from the inlet valve.

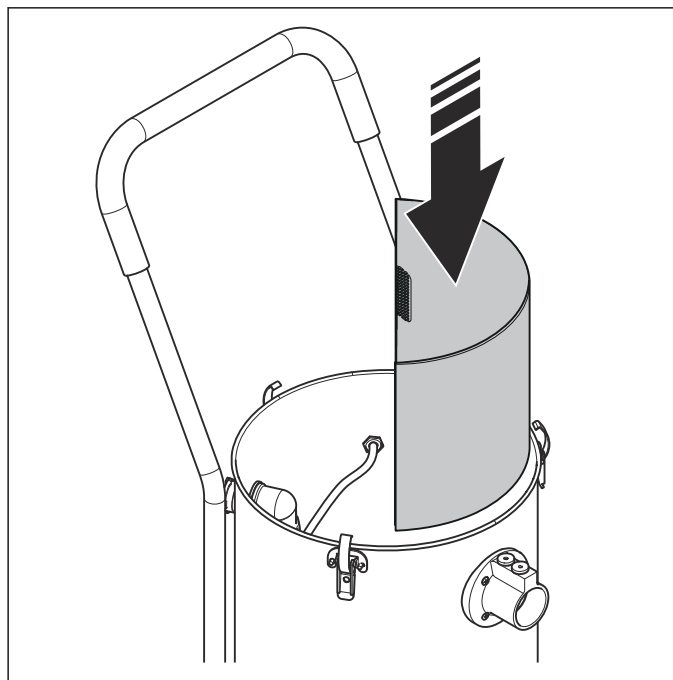


5. Remove the waste container from the container.

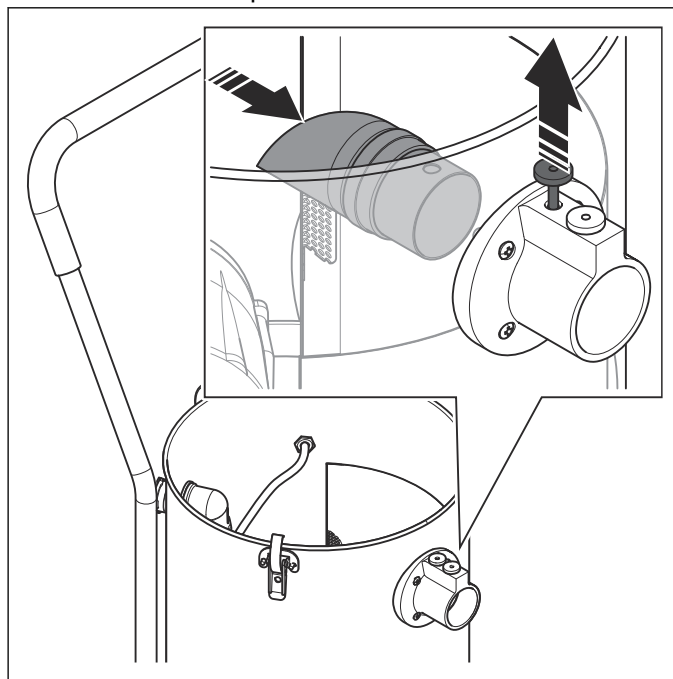


8.4.2 To install the waste container

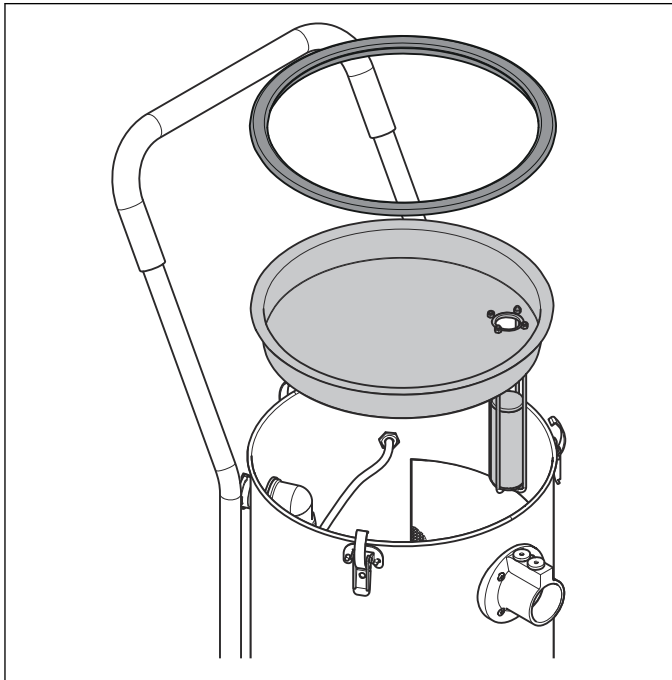
1. Put the waste container into the container.



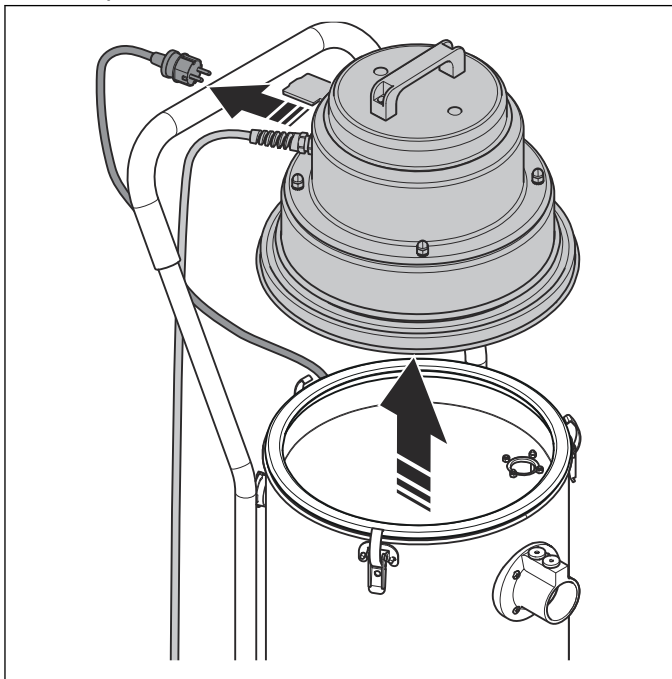
2. Pull the lockpin and attach the inlet to the inlet valve. Release the lockpin.



3. Attach the bearing and the float plate to the container.



4. Attach the motor housing to the product. Lock the clamps.

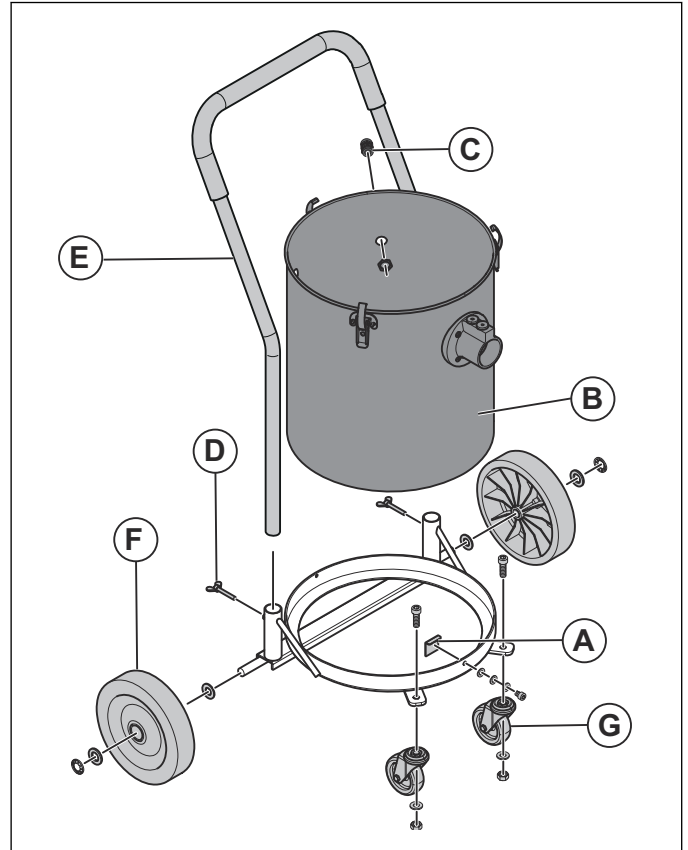


5. Connect the power cord to the motor housing.

8.5 Frame and wheels

8.5.1 To disassemble the frame and wheels

1. Loosen the wing knobs (D). Remove the handle (E).



2. Remove the cable inlet (C) from the container (B).
3. Loosen the screws and remove the plate (A).
4. Remove the container (B).
5. Loosen the screws and remove the rear wheels (F).
6. Loosen the screws and remove the front wheels (G).

8.5.2 To assemble the frame and wheels

- Assemble the frame and wheels in the opposite sequence to *To disassemble the frame and wheels* on page 18.

9 Transportation, storage and disposal

9.1 Transportation of the product

- Remove the dust from the container.
- Put the product in a closed vehicle during transportation.
- Do not put the product in frost or rain during transportation.
- Let the product stay in an upright position during transportation.
- To prevent damages and accidents, make sure that the product cannot move during transportation.

9.2 Storage of the product

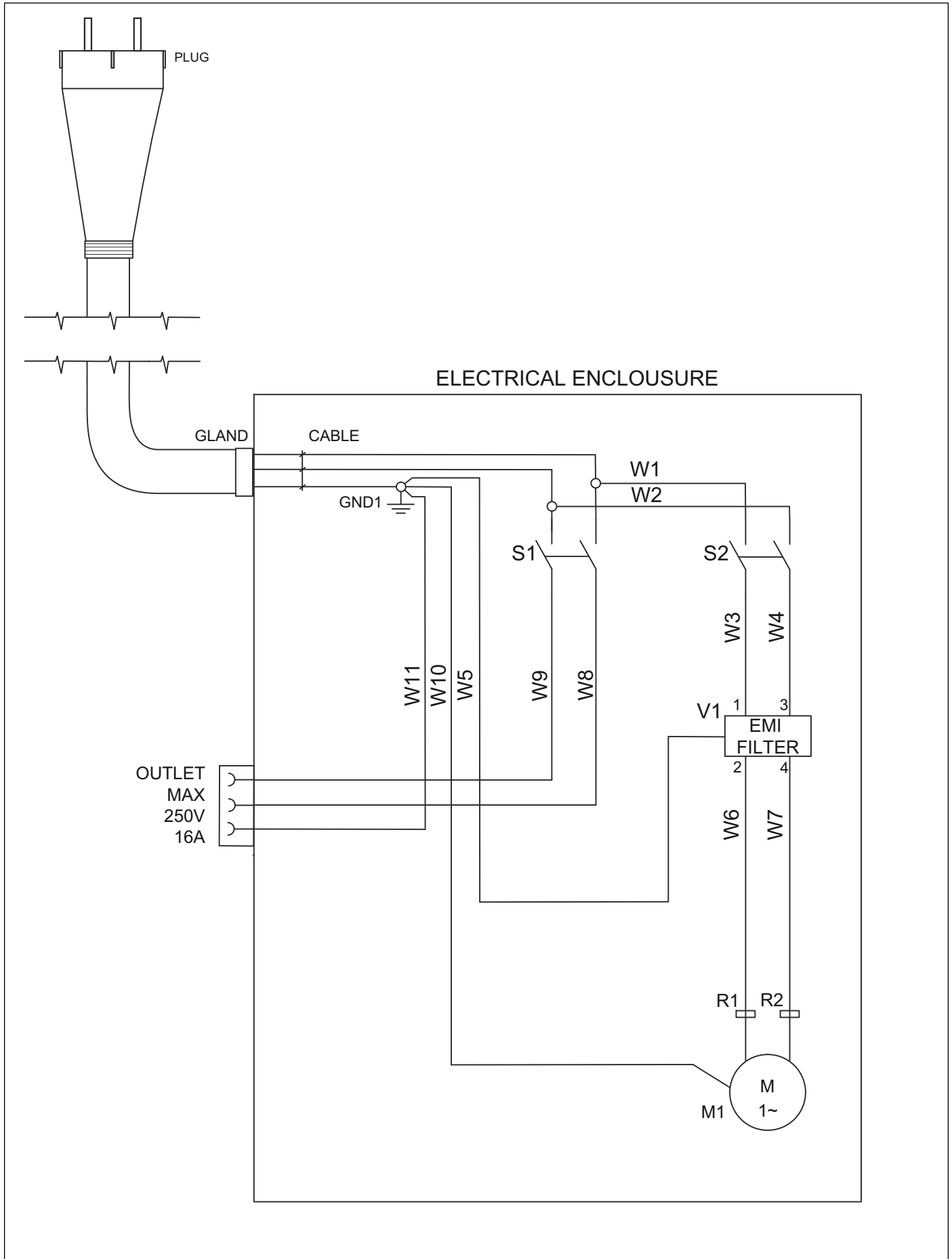
- Put the product in an indoor storage away from outdoor elements.
- Disconnect the product from the power source.
- Put the product in a dry and frost-free area.
- Put the product in a locked area. Do not let children or not approved persons near the product.

9.3 Disposal

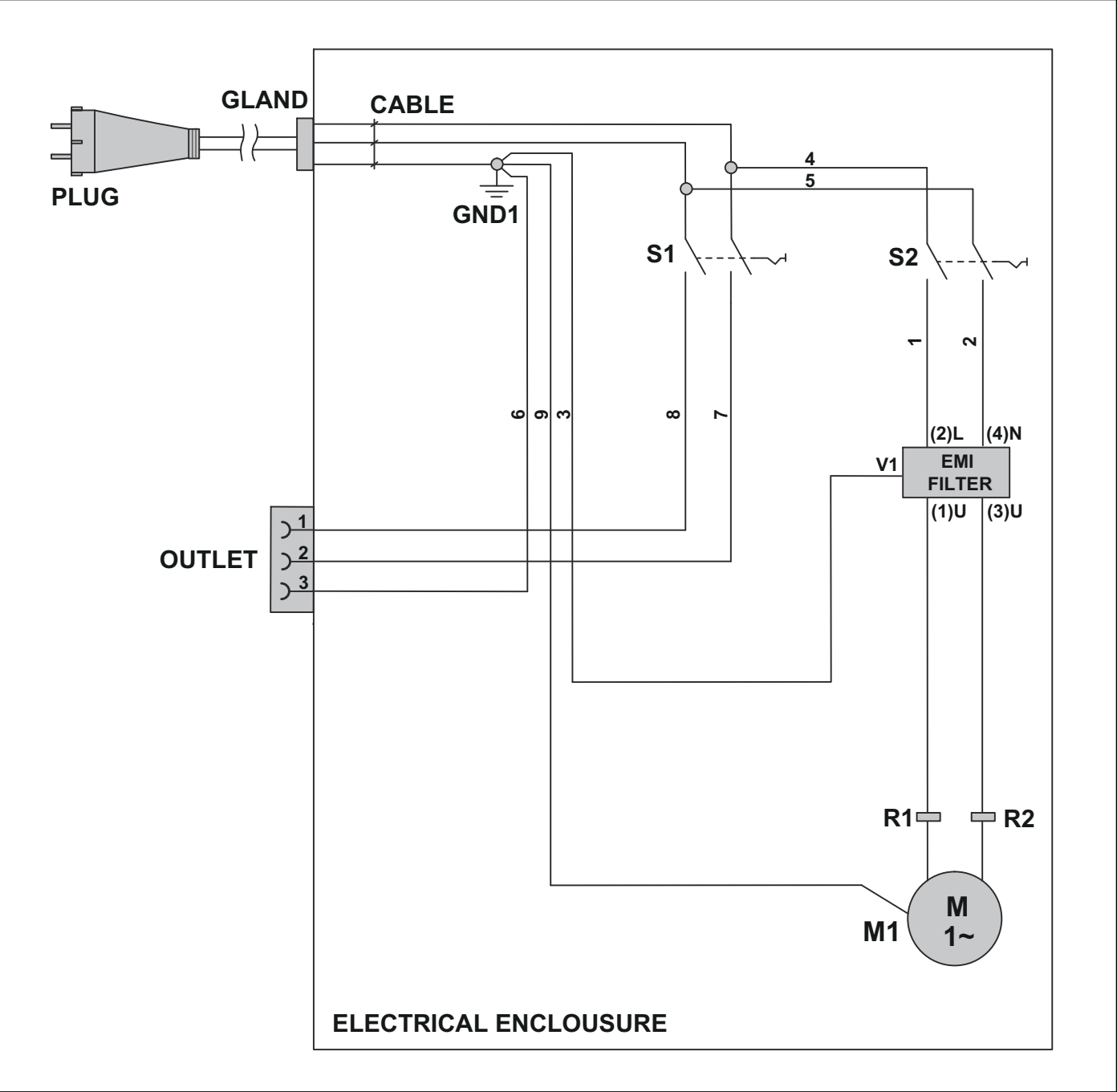
- Obey national regulations.
- Use the local recycling system.

10 Diagrams

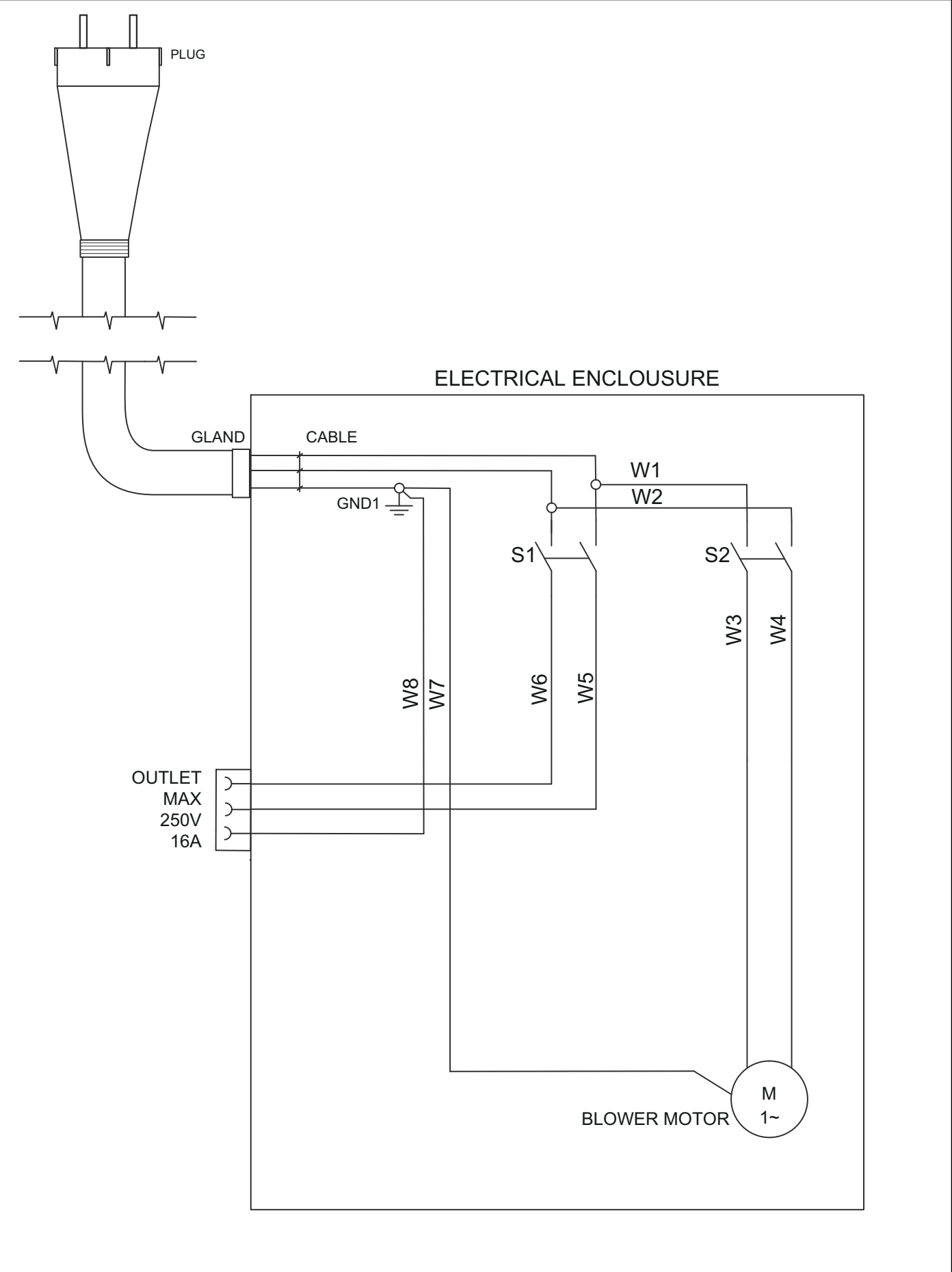
10.1 Electrical schedule, EU version with filter 590427201



10.2 Electrical schedule, EU version with filter 548068901



10.3 Electrical schedule, US version



11 Technical data

11.1 Technical data

| | |
|---|---|
| Voltage, 1 phase, V | 220-230 |
| Frequency, Hz | 50 |
| Motor power, kW (HP) | 1.55 (2.1) |
| Maximum current, A | 5 |
| Airflow, m ³ /h (CFM) | 160 (95) |
| Vacuum, kPa (psi) | 22 (88) |
| Water lift, m (in.) | 2.3 (90) |
| Main hose diameter, mm (in.) | 38 (1.5) |
| Main hose length, m (ft) | 3 (10) |
| Inlet diameter, mm (in.) | 38 (1.5) |
| Air filter, Yes/No | No |
| Air filter area m ² (ft ²) | N/A |
| Type of dust collection system | Disposable bag or Stainless steel container |
| Dust collection capacity, l (gal) | 29 (7.66) |
| Evacuation pump Yes/No | Yes |
| Maximum pump power, kW (HP) | 0.35 (0.47) |
| Maximum pump current, A | 1.6 |
| Pump waterlift, m (ft) | 6 (20) |
| Pump discharge, l/min (gal/min) | 150 (39) |
| Dimension, LxWxH, mm (in.) | 530x520x910 (20.9x20.5x35.8) |
| Weight, kg (lbs) | 27 (59) |
| Sound power level L _{WA} measured, dB(A) ¹ | 85 |
| Sound pressure level L _{PA} at the operators ear, dB(A) ² | 74 |
| Vibration level a _h , m/s ²³ | ≤2.5 |

¹ Noise emissions in the environment measured as sound power (LWA) in conformity with EN 60335-2-69. Uncertainty Kwa 2dB.

² Noise pressure level according to EN 60335-2-69. Uncertainty KPA 2dB.

³ Vibration level according to EN 60335-2-69. Reported data for vibration level has a typical statistical dispersion (standard deviation) of 1 m/s²

598893102

2024-06-17