

## SB, Blade shaft system screw, FS 3500 G, 2019-04

### SYMPTOM/DESCRIPTION

We have changed the blade shaft system screws and washers on FS 3500 G to a longer screw and bigger washer (figure 1).

This is to improve the stability against the frame.

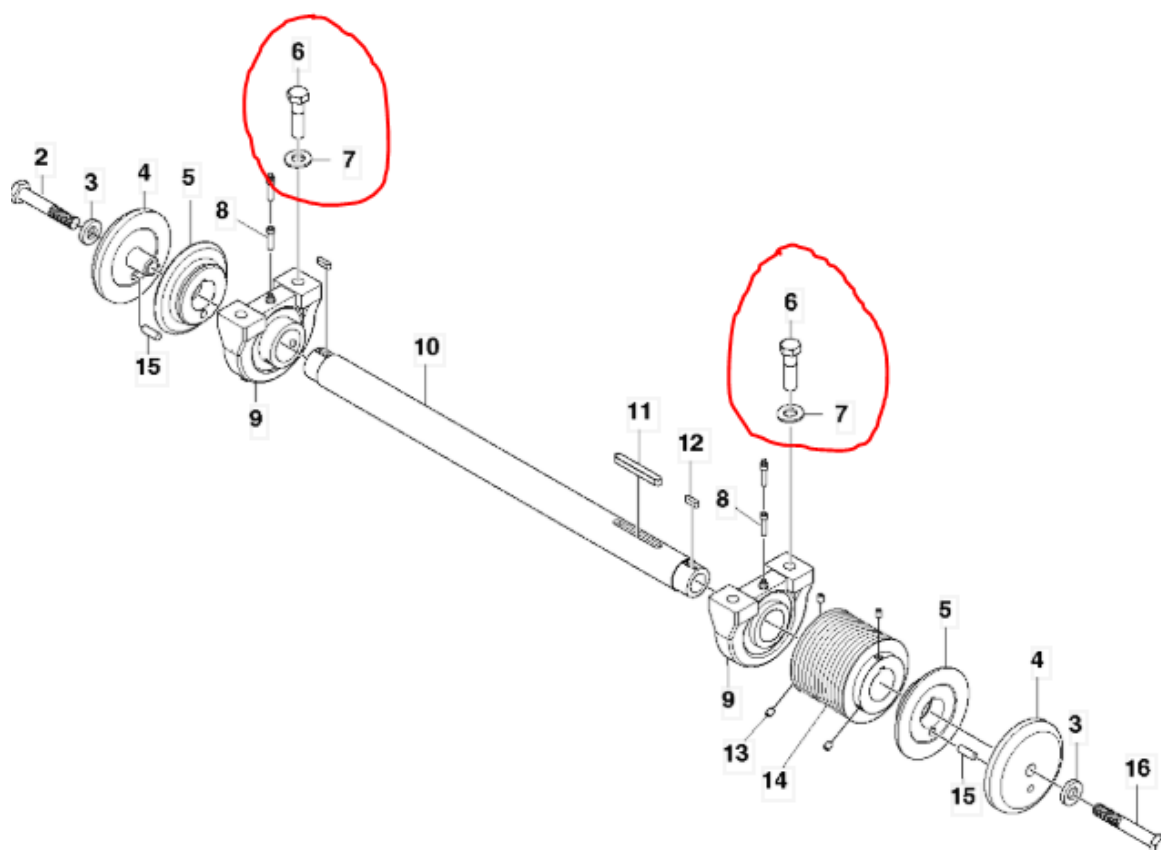


Figure 1

### AFFECTED UNITS

FS 3500 G.

### CORRECTIVE ACTION

When changing screws and washers on the FS 3500 G blade shaft system mounted on an older model the belt guard will not fit correctly.

## PROCEDURE

Remove belt guard and grind of the corner closest to the washer as shown in figure 2.



Figure 2

## PARTS INFORMATION

Old part number	Description	New part number	Description
590880401	SCREW	597677701	SCREW AND WASHER KIT
539976982	WASHER	597677701	SCREW AND WASHER KIT

## WARRANTY INFORMATION

The normal warranty policy applies.

### Revision History

Rev.	Date	Order id.	Description
A	2019-04	SB-4202	Created