

## SB, Flap update, S-Line, T4000 & C-3000, 2021-12

### SYMPTOM/DESCRIPTION

The new “Hatch” and “Plate” have three holes for attachment instead of two as previous version.

### AFFECTED UNITS

All C-Line, S-Line and T4000.

### Parts Information

Part name	Part no.	Quantity
<u>Assembly Kit</u> (includes below parts)	590398601	1
Hatch, Mounting	591851201	1
Plate, Mount	591850101	1
Fasteners	591774401	3

### CORRECTIVE ACTION

Assemble new updated Flap design as per instruction in *Procedure* below.

### WARRANTY INFORMATION

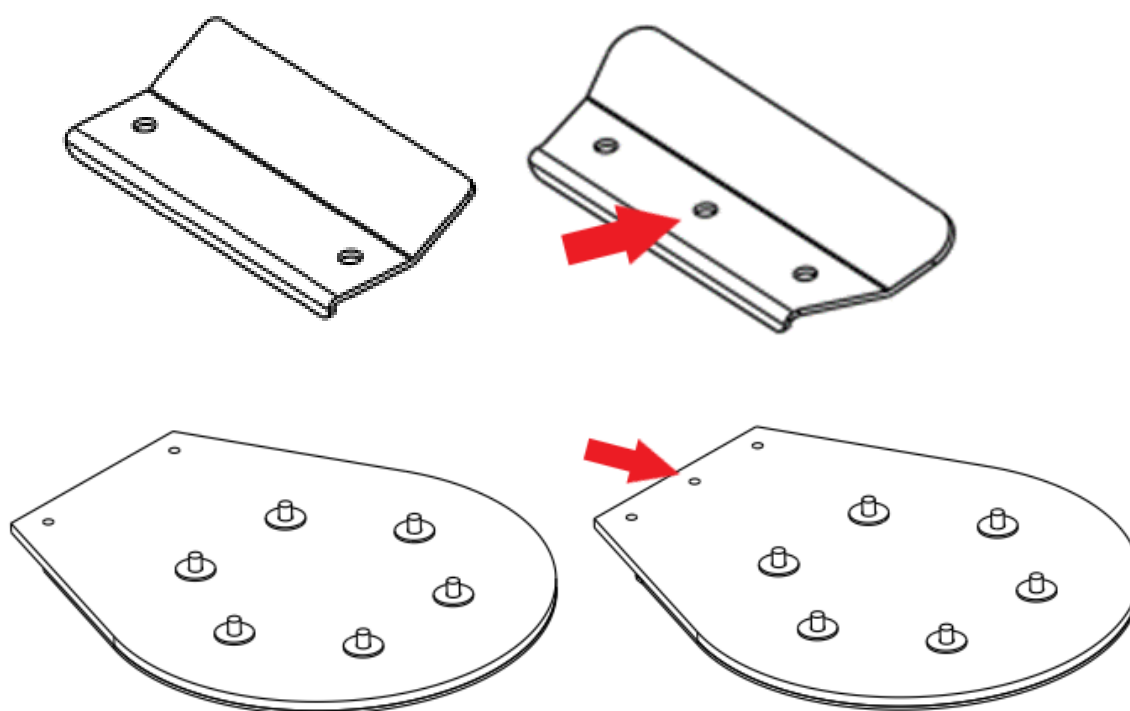
Normal warranty policy applies.

### Revision History

Rev.	Date	Order id.	Description
A	2021-12	00016030	Created

## PROCEDURE

1. Disassemble and remove necessary parts to access Flap on Dust Extractor, and also parts to be replaced.
2. No pre-drilling needed on rubber part of Flap assembly to accommodate third fastener. Using the new metal plate as a guide, fasten the two outer self-drilling screws in the same place as previous two holes where located.
3. Fasten the third (new) self-drilling fastener in the middle using metal plate as guide.



Be aware that the flap should not be bent downwards to open it more after attaching the Dust Extractor, as this will create additional stress leading to pre-mature wear of the Flap.