

## SB, Lose pinion nut, K4000, 2023-11

### SYMPTOM/DESCRIPTION

Field reports have shown that the nut on the pinion on K4000 (figure 1) can come lose. In order to improve this, we have added thread locking "Loxenal 55-03" to the nut in the production line from serial no. 20231106711 and onward.

The nut on spare parts now have dry Loctite on them.

### AFFECTED UNITS

K4000 – Solution implemented on serial no: 20231106711.

### CORRECTIVE ACTION

Use new nut with dry Loctite to prevent it from coming lose.

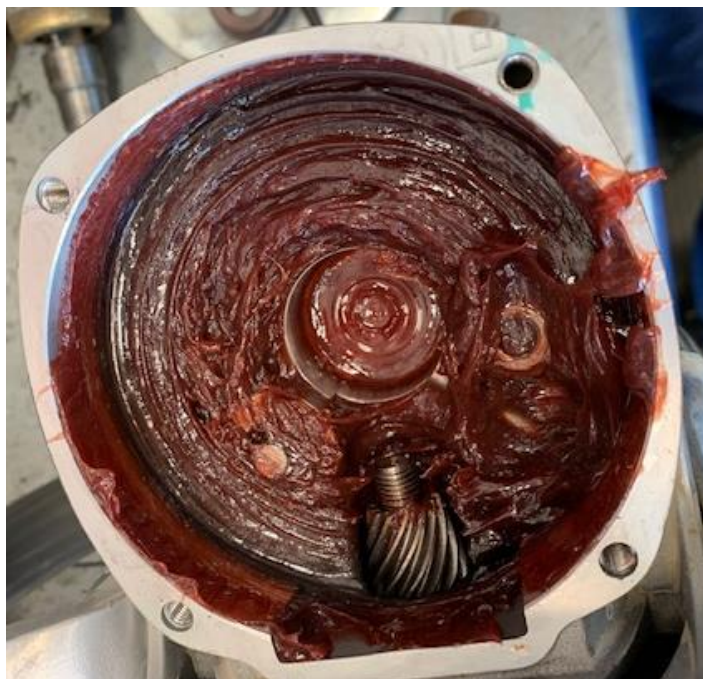


Figure 1:

### PART INFORMATION

Article Name	Old Part No	New Part No
Nut	523122402	523122403

### WARRANTY INFORMATION

The normal warranty policy applies.

### Revision History

Rev.	Date	Order id.	Description
A	2023-11	00026604	Created