

## SB, Parking brake, FS 513, FS 520, FS 524, 2018-09

### SYMPTOM/DESCRIPTION

A new parking brake has been introduced on the FS 500-series. The parking brake is implemented in production on all new saws.

### CORRECTIVE ACTION

To retro-fit the parking brake on older models, please follow the instructions in "Procedure".

### PROCEDURE

Parking brake kit 596874401 includes (figure 1):

1. Decal
2. Screw
3. Washer
4. Nut
5. Brake.

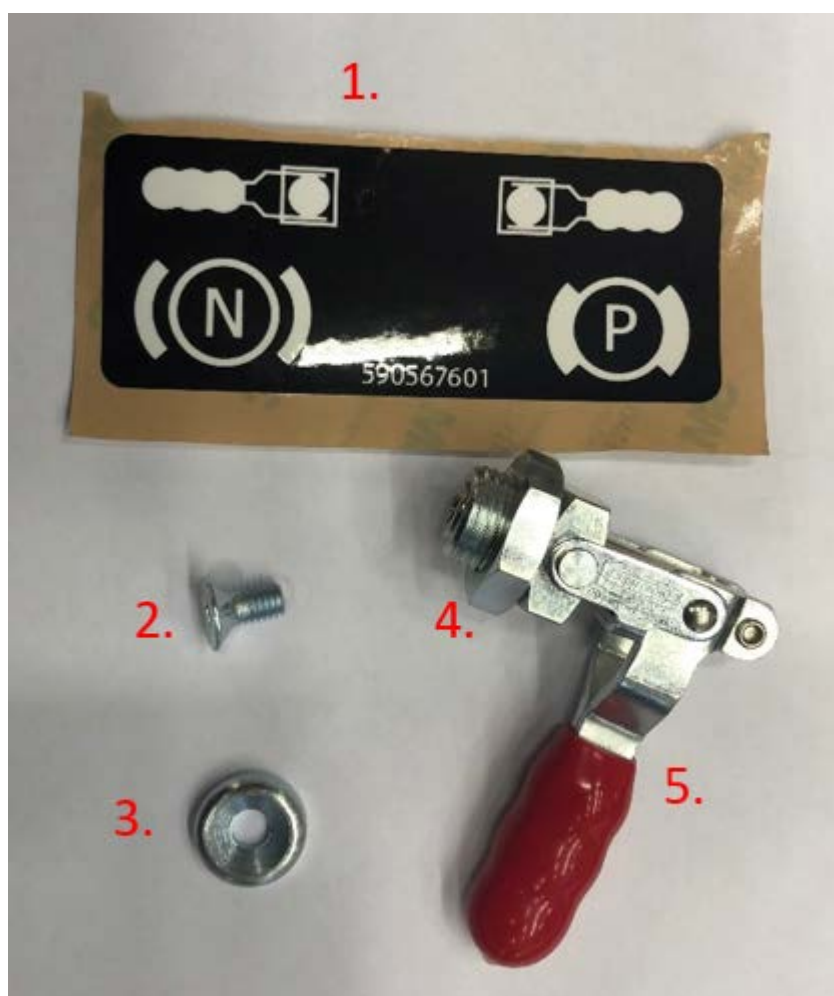


Figure 1

A. Mark up where to drill a hole for the parking brake over the left wheel.

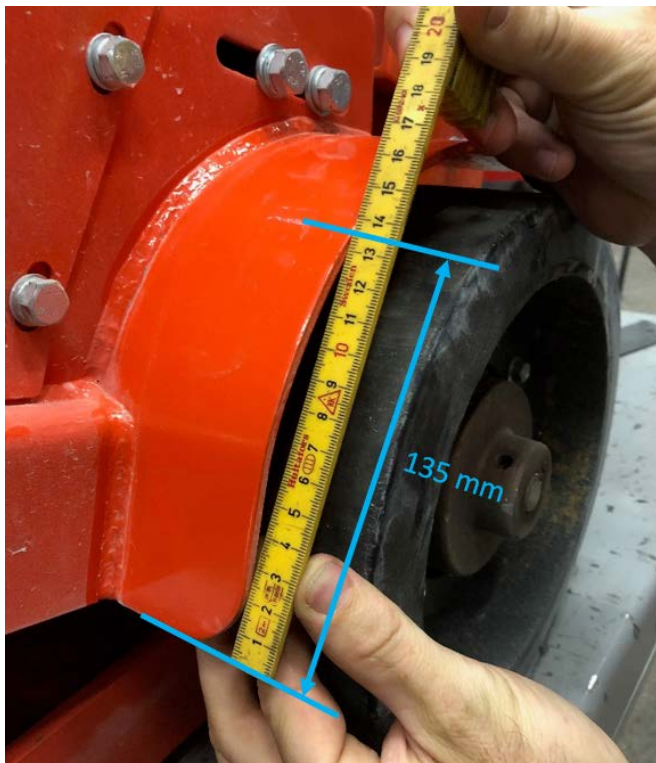


Figure 2



Figure 3

B. Drill a hole  $\varnothing$  16mm.



Figure 4



Figure 5

C. Place the sticker (item 1 in in figure 1) as shown in figure 6.



Figure 6



- D. Mount the rest of the kit-parts (pictured in figure 1) as shown in figure 7:
- a. the brake (5)
  - b. with nut, (4)
  - c. washer (3)
  - d. and screw (2).

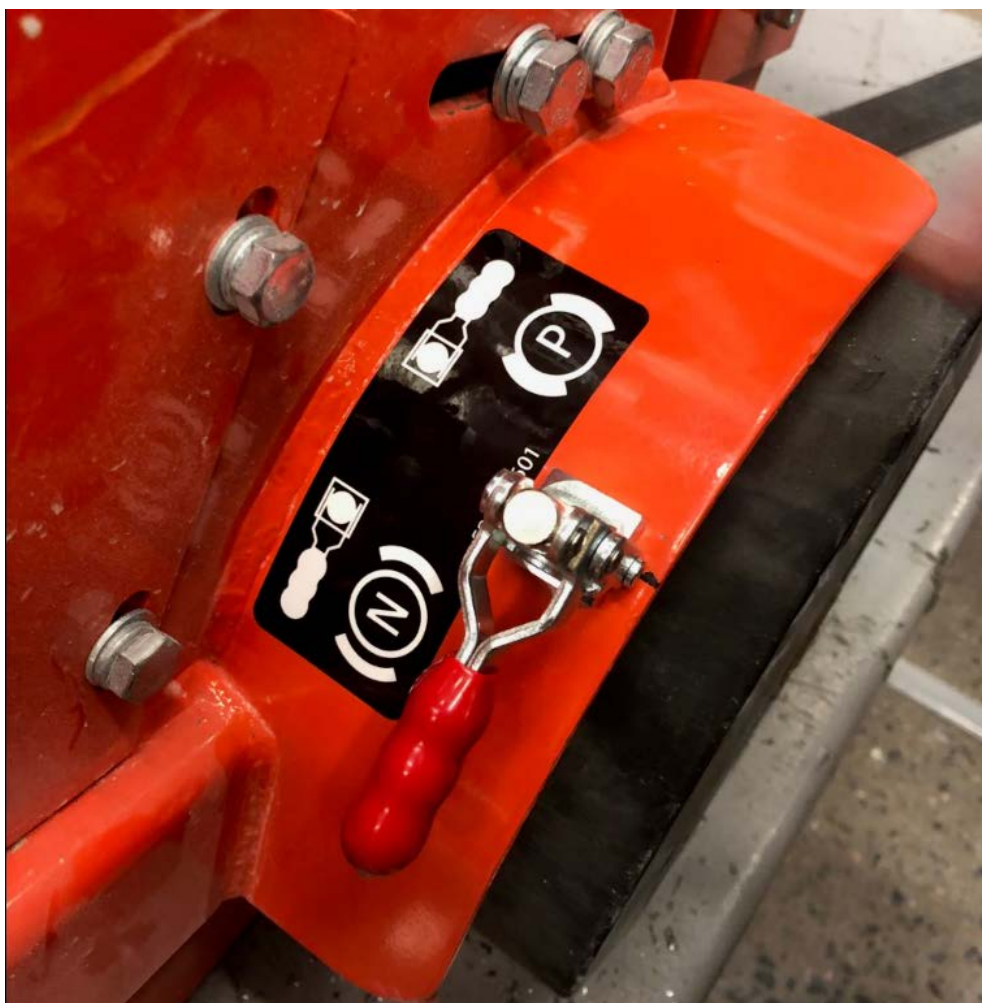


Figure 7

## PARTS INFORMATION

Description	Article number
Parking brake kit	596874401

## WARRANTY INFORMATION

The normal warranty policy applies.

### Revision History

Revision	Date	Order-ID	Description
A	2018-09	SB-3163	Created