

SB, Updated pointer, Soff-Cut 150, 2017-03

SYMPTOM/DESCRIPTION

The pointer for Soff-Cut 150 has been updated for better precision and reduced play.

AFFECTED UNITS

The updated pointer was implemented from serial number **2017 0200001**.

PROCEDURE

When assembling a new pointer, follow the assembly instruction in Appendix A.

PARTS INFORMATION

See Table 1 and Figure 1 for parts information related to pointer update.

Description	Pos. in figure 1	New part number	Old part number	Comment
Pointer kit	8	582 67 35-01	506 87 63-01	Includes updated parts
Gasket	10	589 77 25-01	(new part)	New part added.
Cap, front	1	582 65 38-01	505 58 87-01	Changed from aluminum to steel.
Guide bar	2	(not available as spare part)	505 57 30-01	Improved tolerances.

Table 1: Spare parts affected by the updated pointer.

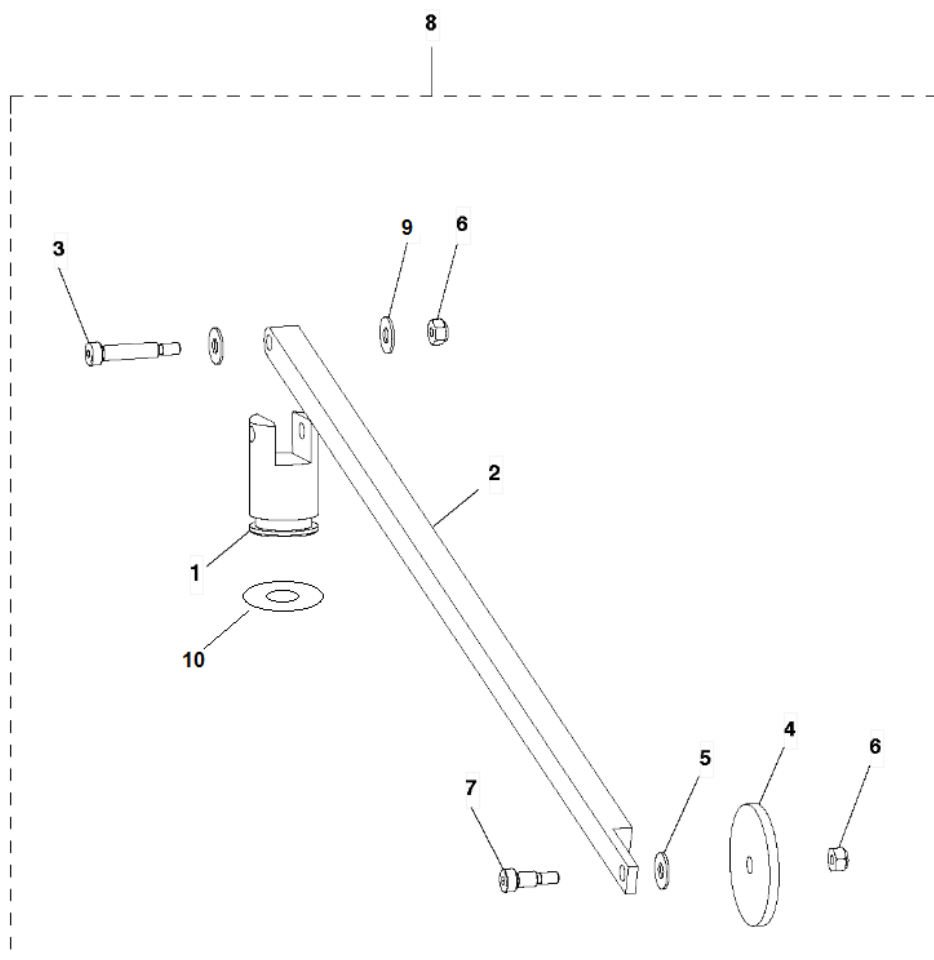


Figure 1: Pointer from Soff-Cut 150 spare parts list.

WARRANTY INFORMATION

The normal warranty policy applies.

Appendix A

Assembly instruction: Pointer gasket, Soff-Cut 150.

