

SB, New pointer, Soff-Cut 150, 2024-01

SYMPTOM/DESCRIPTION

As a result of a constant strive for optimal customer satisfaction and experience, a new Pointer design has been implemented. The implementation of the new pointer also affects the Blade block housing and IPL.



Fig. 1: Current design.



Fig. 2: New design.

AFFECTED UNITS

The table shows serial number break when the machines were updated with new Pointers.

Model	Article No	Article description	HID START	Remark
Soff-Cut 150	966844820	ENTRY SAW Soff-Cut 150 4.8hp 6" Honda	24009668448202120234910001	New pointer installed
Soff-Cut 150	966844821	EARLY ENTRY SAWS 4.8 hp Honda EU	24009668448202120234910001	New pointer installed

CORRECTIVE ACTION

For Soff-Cut 150 with a Serial number earlier than 20234910001:
when ordering the Pointer as a spare part, use the old Pointer kit number 582673501, Pos 26.

For all machines after the serial number break:
order the new Pointer kit number 546467801, Pos 36.

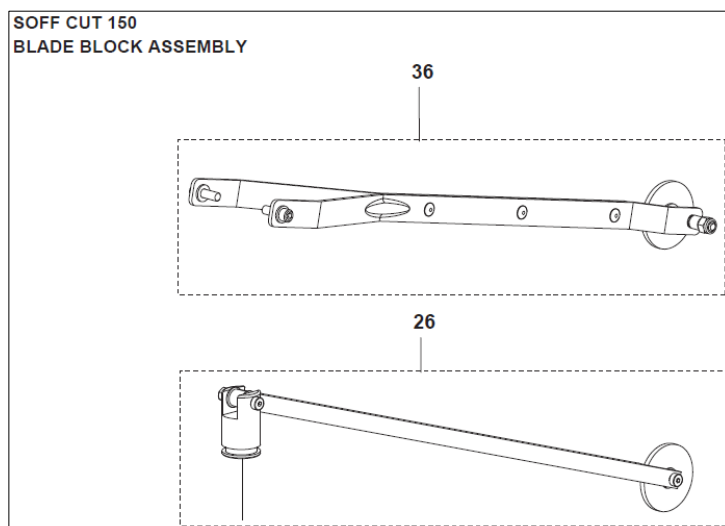


Fig. 3: New pointer kit (pos 36) and old pointer kit (pos 26).

For a Retroactive update of the old Blade block housing, follow **Appendix 1** below.

PARTS INFORMATION

Blade block housing - The new pointer is bolted on the new revision blade block housing by means of two bolts at each side, figure 4. There is no change in the Blade block housing part number, it is still the same PN 505587801. The only difference between the old and new housing is the two additional holes for bolting the new pointer, figure 5.

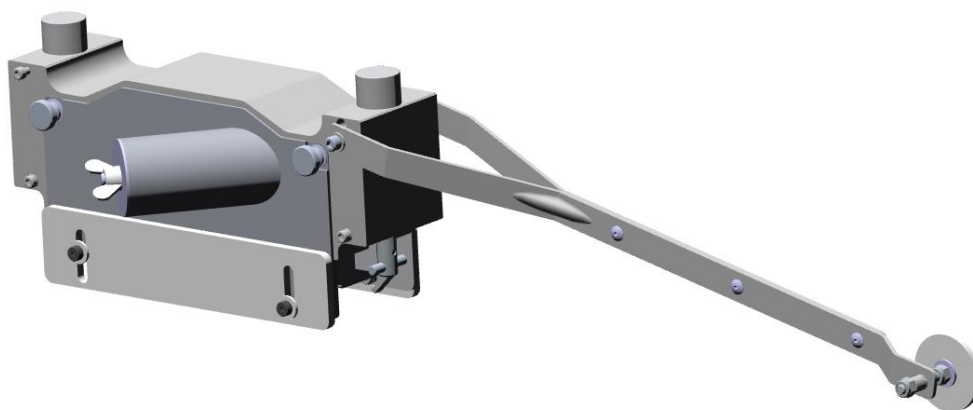


Fig. 4: New pointer bolted to the revised blade block housing.

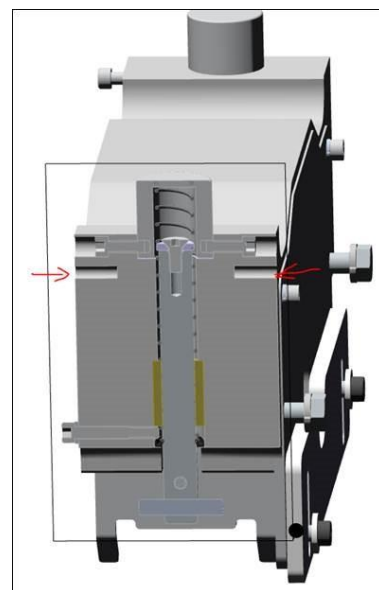


Fig. 5: Additional holes.

Old pointer PN 582673501 – will be kept available for repairs on all machines that still exist on the market/field. It fits well on both Blade block housings, the old and the new one.

New pointer 546467801 – is available for orders. It fits only on the new Blade block housing after the serial number break.

WARRANTY INFORMATION

The normal warranty policy applies.

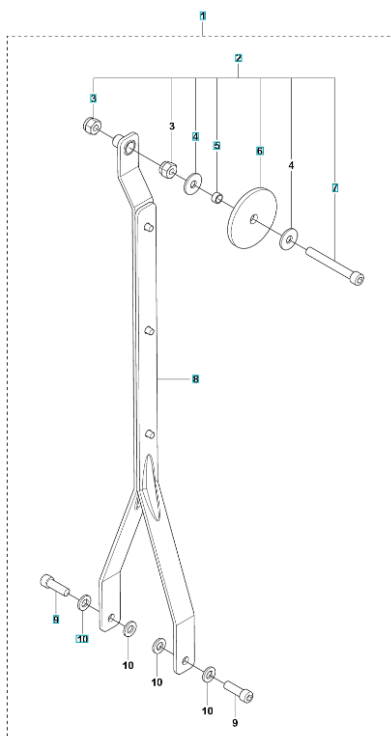
Revision History

<i>Rev.</i>	<i>Date</i>	<i>Order id.</i>	<i>Description</i>
<i>A</i>	<i>2024-01</i>	<i>00038420</i>	<i>Created</i>
<i>B</i>	<i>2024-02</i>	<i>00040419</i>	<i>Appendix 1 added, describing “Retroactive update of the old Blade block housing”.</i>

Appendix 1

Retroactive update of the old (current) Blade block housing.

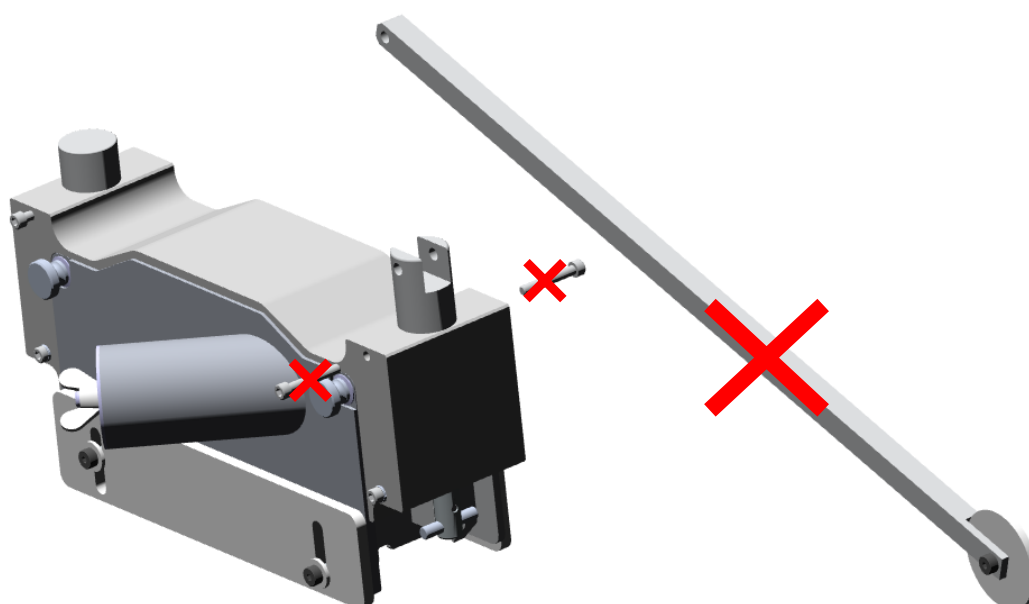
1. Order the new Pointer kit PN 546467801.



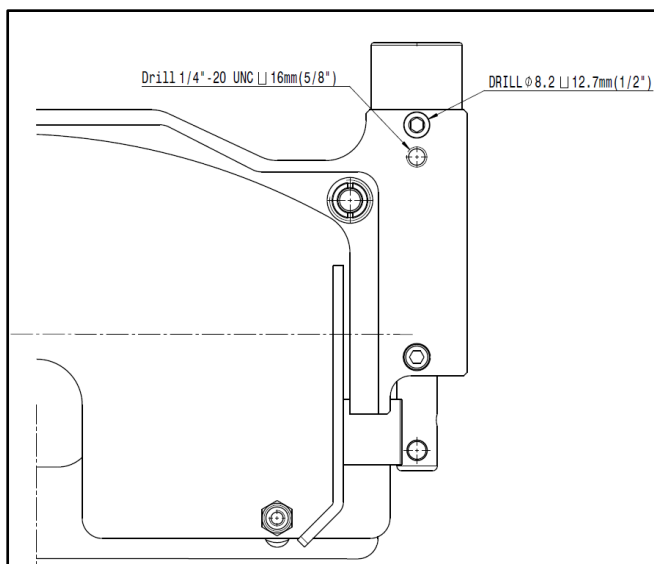
Find	Article N.	Description	Qty
Q 1	546467801	POINTER	1
Q 2	547572801	WHEEL KIT WHEEL KIT	1
Q 3	505630501	NYLOC NUT 1/4-20 CAD PL.	2
Q 4	594526601	WASHER	2
Q 5	546467701	BUSHING	1
Q 6	546467401	WHEEL	1
Q 7	505728901	BOLT	1
Q 8	547076801	POINTER	1
Q 9	505627801	BOLT	2
Q 10	505632001	WASHER	4

2. Detach the Blade block from the machine.

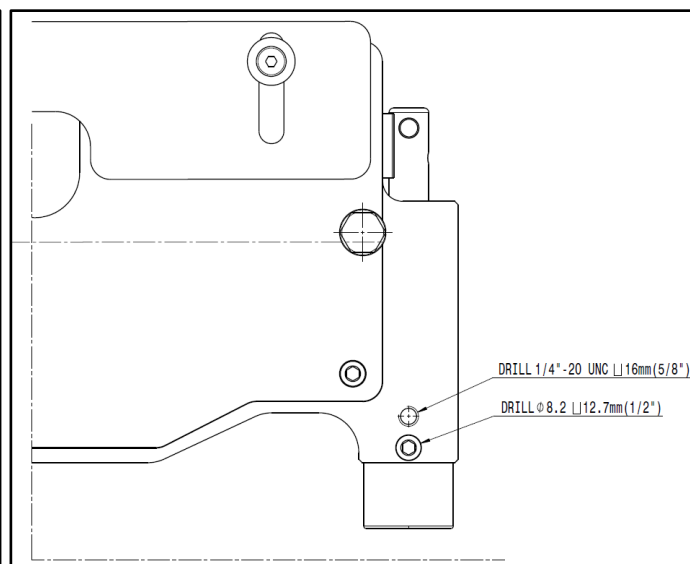
3. Remove the old pointer and the screws holding the current cap.



4. Print the [Drill template drawing](#) on both sides on the same sheet!
NOTE: You can print it on one page on each side. Then you will be able to use the same paper for both sides.
5. Cut paper templates as per the given drawings.

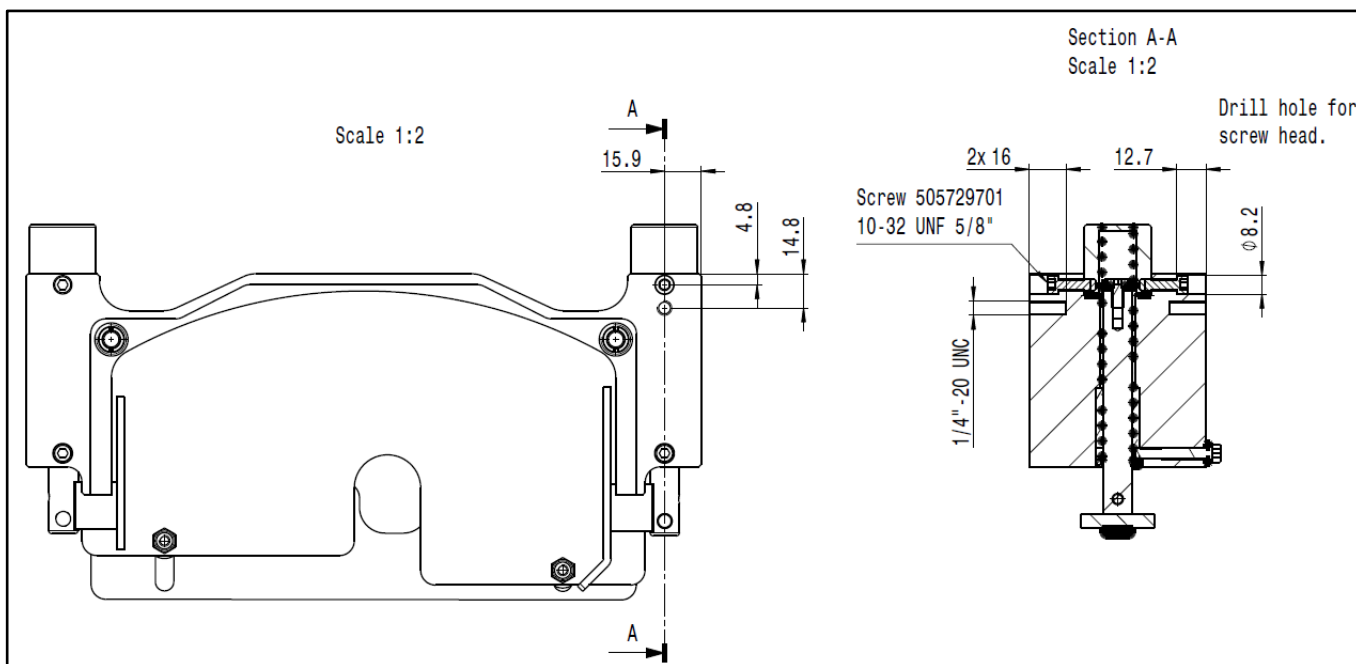


Template for the inner part of the Blade block



Template for the outer part of the Blade block

6. Drill the holes as per the drawing and make the threads as per the prescribed size tap.



7. Clean the threads from the debris.
8. Instal the new parts:
 - a. You can keep the current Cap or replace the Cap – Pos 9, PN 505588601. It is the same as the rear one.

- b. Upper screws – Pos 25 (x2), PN 505591401. Tightening torque – 3,5Nm, no Loctite to be used.
- c. Lower screws – Pos 37 (x2), PN 50562780. The recommended tightening torque is 2 Nm, so the pointer is still free to move up and down. Apply Loctite 242.
- d. Washers – Pos 38 (x4), PN 505632001.

