

SB, Improved Carriage, DS250, 2021-03

SYMPTOM/DESCRIPTION

The DS 250 carriage has been improved. Material has been added to the carriage allowing the adjustment screws longer thread length. This will allow the ESLOCK-screws better grip and reduce the risk of the screws vibrating lose.

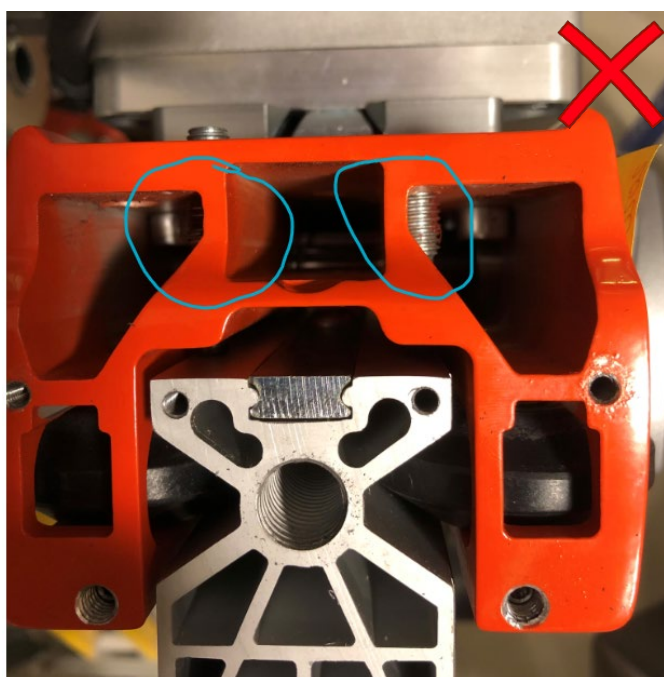


Figure 1: Old carriage.

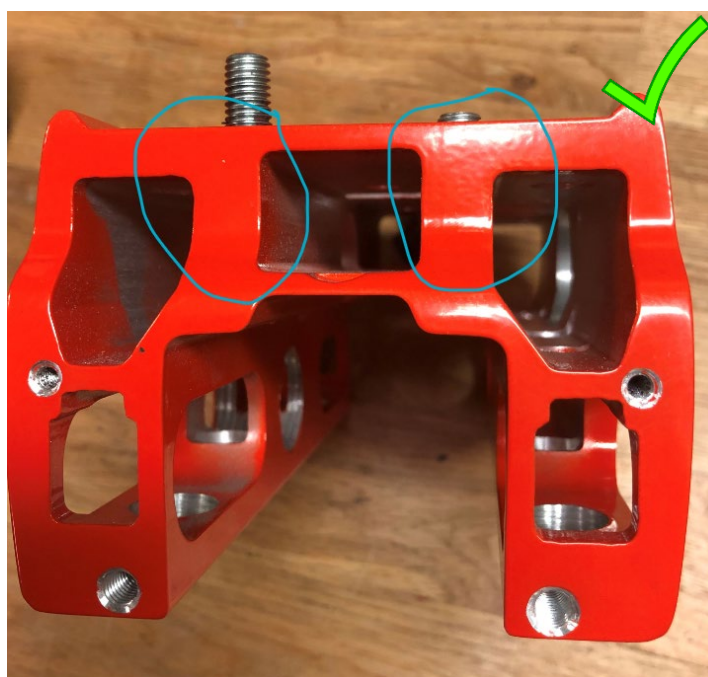


Figure 2: New carriage.

AFFECTED UNITS

DS 250 change implemented on serial No: 20205300008.

WARRANTY INFORMATION

The normal warranty policy applies.

Revision History

Rev.	Date	Order id.	Description
A	2021-03	SB-6525	Created