

SB, Slip Clutch, DM220, DM230, 2015-01

SYMPTOM/DESCRIPTION

Parts for the slip clutch in DM220 and DM230 have been updated. Older parts have shown to give occasional problems with gearwheel wear and slip clutch endurance. This will affect the complete assemblies as well as the “wear and tear” parts.

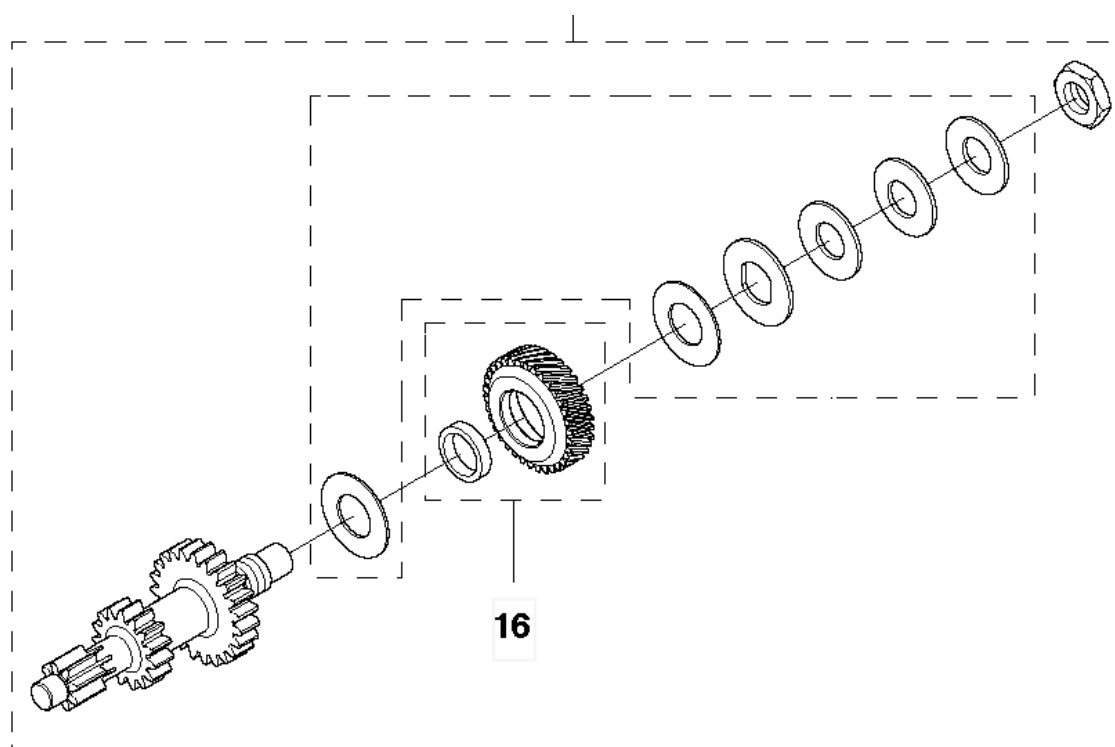


Figure 1: Showing affected spare parts. Note that the bushing and gearwheel (16) are not affected.

AFFECTED UNITS

New parts have been implemented on DM230's from serial number 20142600001

New parts have been implemented on DM220's from serial number 20141600041

CORRECTIVE ACTION

Local scrapping of “old article numbers” is necessary.

When repairs are carried out on products produced later than the communicated serial numbers, the clutch wear and tear parts article number below can be used, otherwise there is a need to change the complete slip clutch assy.

PROCEDURE

Assemble and tighten the clutch according to the workshop manual.

PARTS INFORMATION

| Article Name | Old article number | New article number |
|----------------------------------|--------------------|--------------------|
| Slip clutch, assy | 525 29 55-04 | 587 36 69-01 |
| Slip clutch, assy | 525 29 55-01 | 587 36 69-01 |
| Slip clutch, wear and tear parts | 525 40 20-01 | 587 36 25-01 |

WARRANTY INFORMATION

Normal warranty applies.