

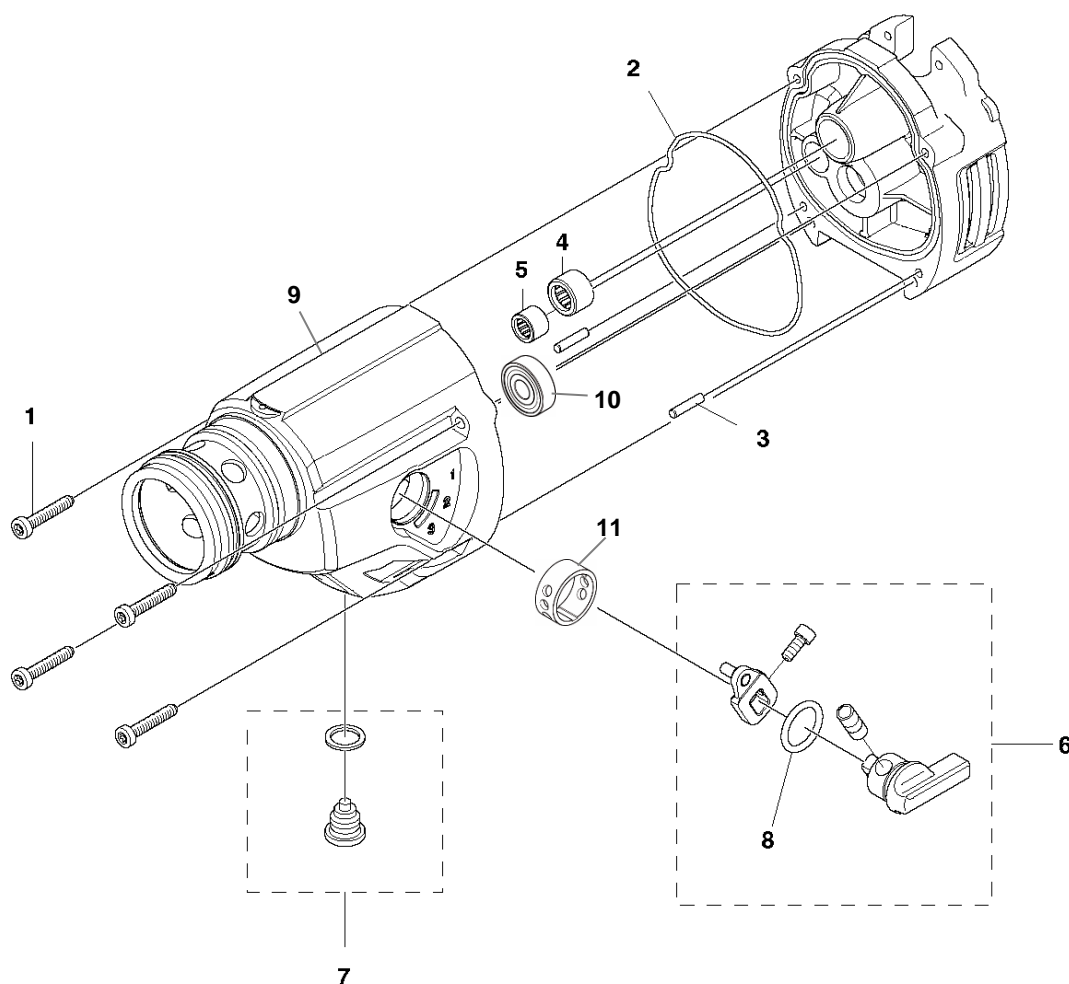
SB, Re-designed Gear box, DM220, 2017-10

SYMPTOM/DESCRIPTION

The gear box is re-designed in order to simplify service and maintenance:

- The screws are accessible from the front
- New gasket
- Parallel pins to ensure correct alignment
- Metal Serial Number plate

The gear box is introduced in production from S/N 174300157 and is **not** backwards compatible.



PARTS INFORMATION

Pos.	P/N	Description	New
1	503 21 53-30	SCREW	x
2	589 99 16-01	SEAL	x
3	720 13 09-51	PARALLEL PIN	x
4	503 25 53-01	NEEDLE BEARING	
5	503 25 42-01	NEEDLE BEARING	
6	525 40 14-02	GEARSHIFT LEVER	x
7	525 48 10-01	OIL PLUG	
8	589 99 61-01	COVER	x
9	589 99 48-01	GEAR HOUSING	x
10	738 22 99-27	BALL BEARING	x
11	544 13 00-01	INSERT	x