

## SB, Gearbox and motor alignment update, DM 220, 2015-11

### SYMPTOM/DESCRIPTION

Parts for the gearbox as well as the gearbox/cover middle castings have changed to give improved overall robustness and improved gearbox sealing:

- The clutch slip value has changed to 14Nm.
- The thread on the clutch has changed to a finer pitch to enable better adjustment of the slip clutch torque.
- The Collector that allows water and dust to pass through the spindle has changed from plastic to brass, this also includes improved seals/O-rings.
- The plastic motor housing has changed to give better motor alignment and a more robust rear handle with increased fiberglass content.
- The air conductor has changed to allow better heat tolerance.
- The water hose has been made more robust with a new adapter in brass instead of plastic.

1. Spindle shaft and key
2. Lock Ring
3. Collector and O-ring
4. Gearbox housing
5. Clutch assembly
6. Cover Middle
7. Motor Housing
8. Air Conductor
9. Hose assembly and adapter

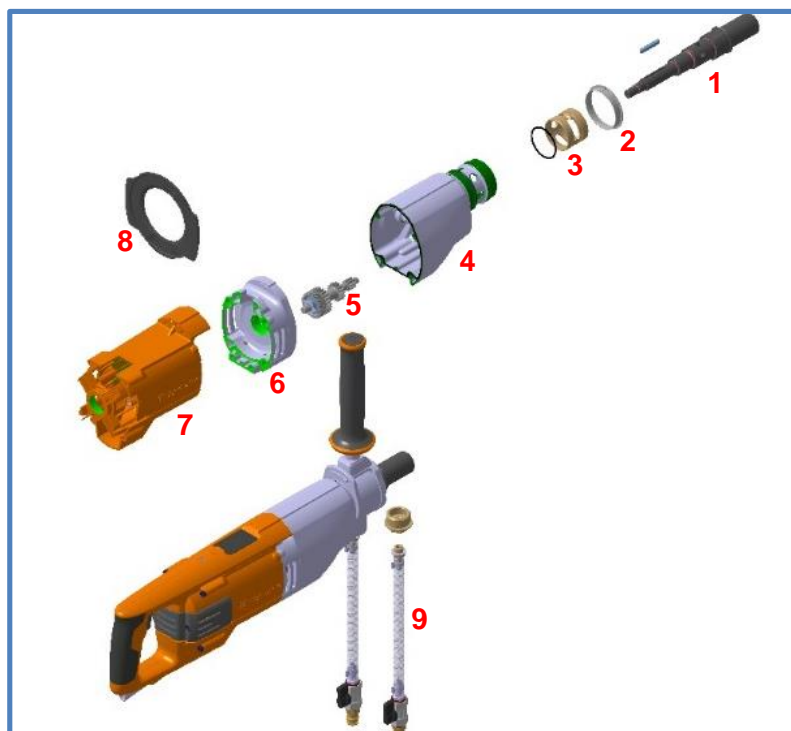


Figure 1. New parts.

## AFFECTED UNITS

All DM220 variants affected.

Serial Number	New parts implemented
20153300021	Spindle shaft and parallel key Collector and seals Gearbox housing Clutch assembly Cover Middle Air Conductor Hose assembly and Adapter Lock Ring
20151600001	Motor Housing

Table 2. Serial number for new parts implementation.

## CORRECTIVE ACTION

Because of the amount of new parts that have been introduced it is important to control the serial number of the serviced machine to ensure spare parts compatibility. Please see *Parts Information* for new parts. The easiest way to identify an updated machine is to see if the Lock Ring is made of metal, see Figure 2.



Figure 3. Lock Ring in metal that distinguishes updated DM220 from pre-update machines.

## PARTS INFORMATION

New part no.	Old part no.	Qty	Part Description	Comment
576 26 97-02	525 29 67-01	1	Gearbox housing	Old part no. valid for serial numbers until 20153300021
574 36 91-02	574 36 91-01	1	Cover Middle	For serial numbers until 20153300021 scrap old parts and order Cover Middle kit
588 61 32-01	N/A	1	Cover Middle kit	Includes Cover Middle part no. 5743691-02 and new Air Conductor part no. 586 91 91-01. Valid for serial numbers until 20153300021.
586 91 91-01	544 12 29-01	1	Air Conductor	Old part no. valid for serial numbers until 20153300021
577 24 42-02	577 24 42-01	1	Collector kit	Old part no. valid for serial numbers until 20153300021
587 69 89-01	N/A	1	O-ring	Part included in new Collector kit part no. 577 24 42-02
577 24 38-03	577 24 38-01	1	Spindle Shaft kit 1/2"	Use up old part no. and substitute
577 24 38-04	577 24 38-02	1	Spindle Shaft kit 5/8"	Use up old part no. and substitute
544 38 16-02	544 38 16-01	1	Parallel key	Old part number valid for serial numbers until 20153300021
587 36 69-02	587 36 69-01	1	Clutch Assembly	Use up old part no. and substitute
587 36 25-02	587 36 25-01	1	Clutch Wear Parts	Use up old part no. and substitute
504 57 11-03	504 57 11-02	1	Gear Wheel Assy	Use up old part no. and substitute
587 82 31-01	574 36 94-01	1	Front Lock Ring	Use up old part no. and substitute
525 29 52-02	576 39 16-01	1	Motor Housing	Use up old part no. and substitute
588 77 85-01	502 30 44-06	1	Hose Assembly	Scrap old part no. and substitute
587 89 70-01	N/A		Adapter for hose	
543 05 24-37	N/A		O-ring	For new "adapter for hose" art no. 587 89 70-01

Table 2. Spare part updates on DM220 and parts needed for updating machine.

## WARRANTY INFORMATION

The normal warranty period policy applies.