

## SB, New Transformer, PP 455E, 2021-09

### SYMPTOM/DESCRIPTION

The old transformer (531117250) with multi primary voltage (400 / 460 / 600 V) will be obsolete from the supplier. It has been replaced by three new parts, see PARTS INFORMATION below.

The PP455 600V version is no longer produced and the old transformer (531117250) is put on stock with a new part number (529351703) to cover future spare parts need for the 600V version.

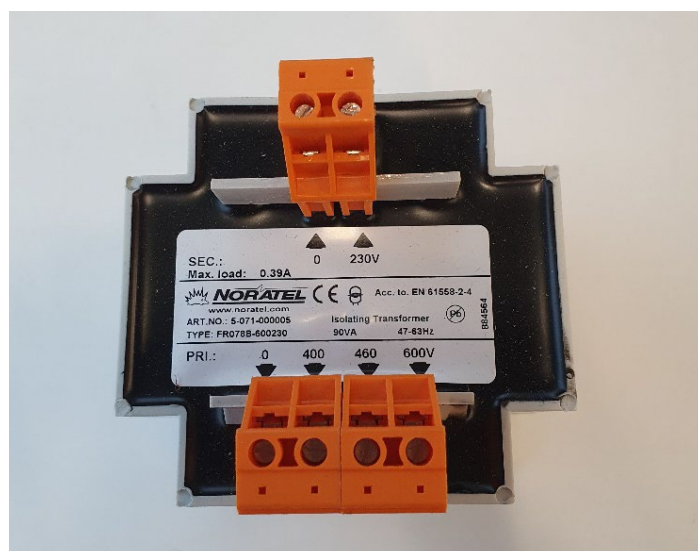


Figure 1: Old transformer (531117250).



Figure 2: New Transformer 400V (529351701).

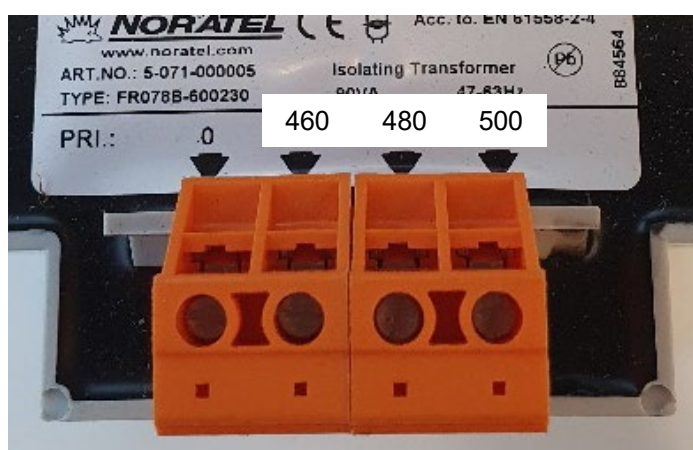


Figure 3: New Transformer 460V (529351702).

### AFFECTED UNITS

Model	All units after below S/N is sent with the new transformer
965156602	Will be updated when implemented.
965156604	
965156605	
965156609	

## CORRECTIVE ACTION

When replacing an old transformer with a new one, be observant to the power supply voltage within the geographical area of your market. The new transformer does not support all of the voltage (400 / 460 / 600 V).

## PROCEDURE

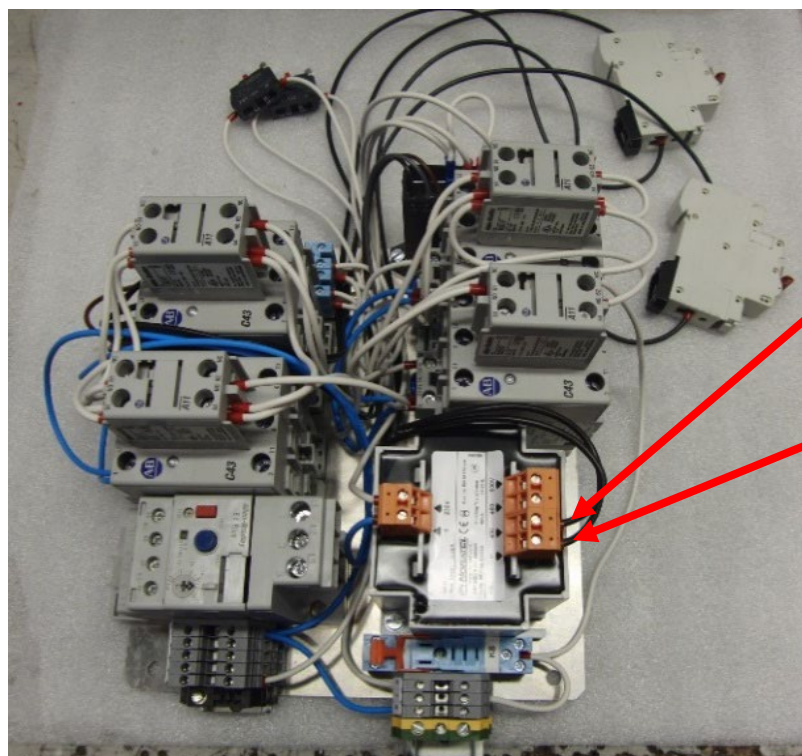


Figure 4: Cable fitting.

On the PP455 400V version the cables are fitted to "0" and "400" on the primary side.

On PP455 460V version (US Market) the cables are fitted to "0" and "460" on the primary side.

## PARTS INFORMATION

Description	Old Part No.	New Part No.	Description New Part
Transformer (multi voltage)	531117250	529351701	Transformer, 400 V
		529351702	Transformer, 460 V
		529351703	Transformer, 600 V

## WARRANTY INFORMATION

The normal warranty policy applies.

## Revision History

Rev.	Date	Order id.	Description
A	2021-09	00011464	Created